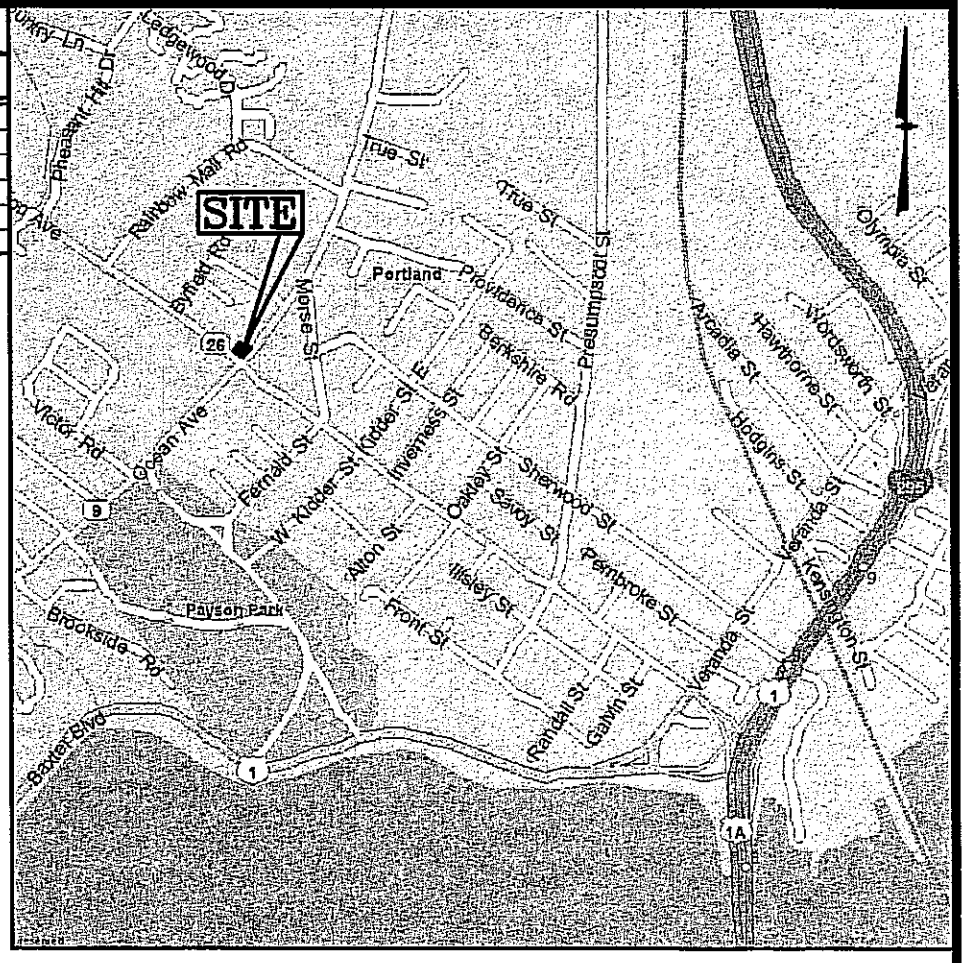
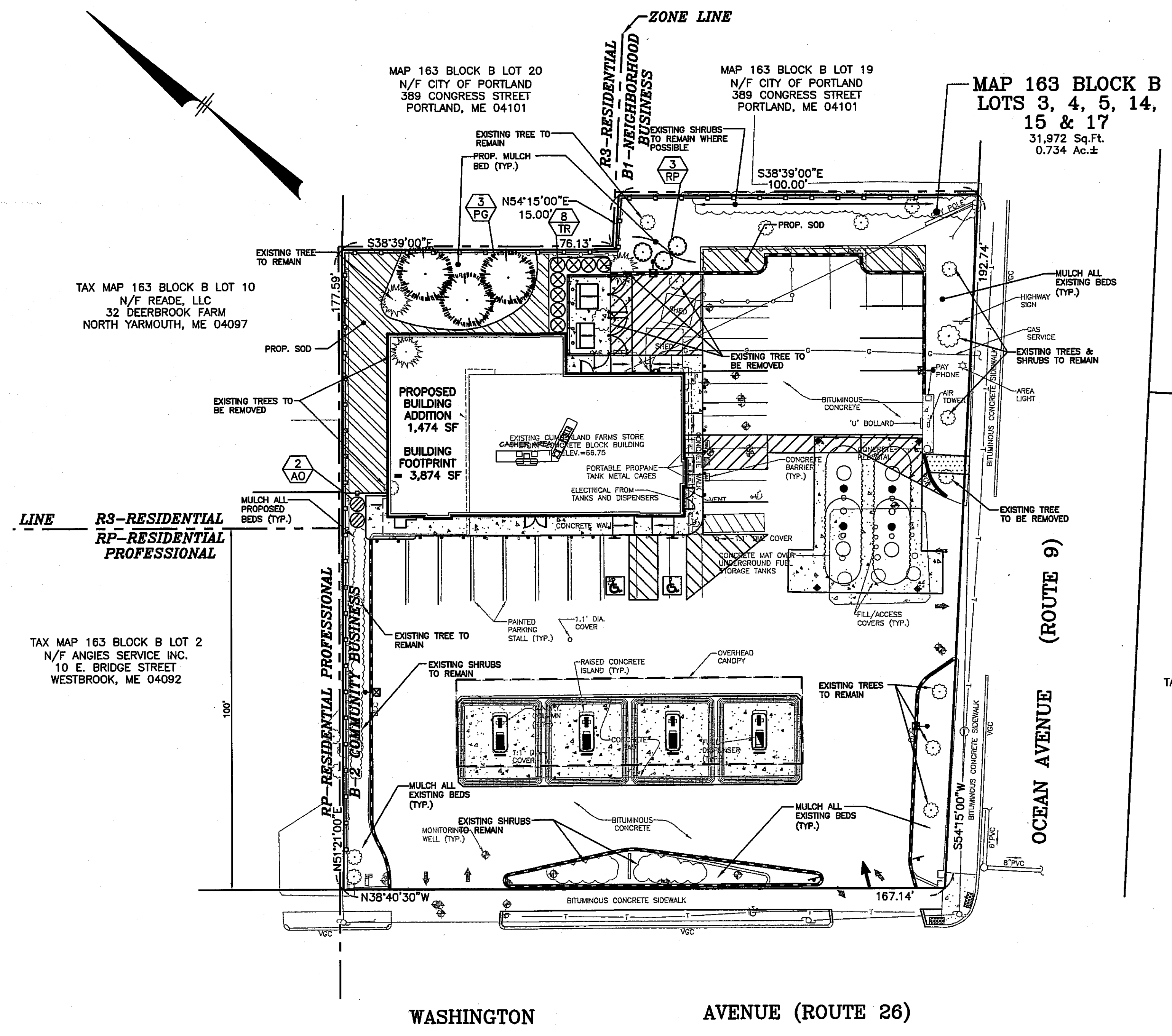


PLANTING SCHEDULE				
PLANT	QNTY	BOTANICAL NAME	COMMON NAME	MIN. INSTAL. SIZE / MATURE SIZE / REMARKS
TREES				
PG	3	PICEA PUNGENS GLAUCA	COLORADO BLUE SPRUCE	7' - 8' HT. --/SCREEN-SPECIMEN
SHRUBS				
AD	2	AZALEA HYBRID	AZALEA	18"-24" HT. 3'-5" HT. MAX./ROSY-RED FLOWERS/'MOTHERS DAY' OR SIMILAR
RP	3	RHOODENDRON 'PJM'	PJM RHOODENDRON	24"-30" HT.-B&B 4'-8" HT. MAX./LAVENDER PINK
TR	8	THUJA OCCIDENTALIS CULTIVAR	ARBORVITAE	6'-7" HT. 3'-4" SPR. MAX./TIGHT COLUMNAR ('SMARAGD' OR SIMILAR)

PLANT QUANTITY
 PLANT DESIGNATION
 PROPOSED SOD



LOCATION MAP (NOT TO SCALE)



TAX MAP 163A BLOCK A LOT 17
N/F SPURWINK SCHOOL
899 RIVERSIDE STREET
PORTLAND, ME 04103

TAX MAP 163A BLOCK A LOT 1
N/F RONALD L. LEMIEUX
CAROL S. LEMIEUX JTS
28 FOREST LANE
CUMBERLAND, ME 04021

TAX MAP 163 BLOCK A LOT 8
N/F ANGIES SERVICE INC.
10 E. BRIDGE STREET
WESTBROOK, ME 04092

ABUTTER ACROSS INTERSECTION
TAX MAP 163 BLOCK E LOT 6
N/F LAURA ANGELONE
28 WHALEBOAT ROAD
PORTLAND, ME 04103

NOTES:

- ALL PLANT STOCK SHALL CONFORM TO ANSI Z266.1 - NURSERY STOCK, LATEST EDITION (AMERICAN ASSOCIATION OF NURSERYMEN, INC.).
- 4" AGED PINEBARK MULCH AND A WEED BARRIER (TY-PAR FABRIC OR APPROVED EQUAL) SHALL BE APPLIED TO ALL SHRUB AND GROUNDCOVER BEDS. INSTALL WEED BARRIER AS PER MANUFACTURERS RECOMMENDATIONS.
- PLANT PIT BACKFILL SHALL BE MIXED AT A RATE OF 7 PARTS OF TOPSOIL TO 2 PARTS OF DEHYDRATED COW MANURE. SLOW RELEASE FERTILIZER SHALL BE APPLIED AS PER MANUFACTURERS RECOMMENDATIONS. USE EXISTING ON-SITE TOPSOIL AS PART OF BACKFILL WHEN AVAILABLE.
- ALL LANDSCAPED AREAS NOT PLANTED WITH TREES, SHRUBS OR GROUNDCOVER SHALL BE RESTORED WITH SEED OR SOD AS INDICATED ON PLANS.
- ALL SOD, SEED, SHRUB AND TREE AREAS SHALL RECEIVE 6" PH CORRECTED TOPSOIL. AFTER TOPSOIL IS SPREAD EVENLY OVER ENTIRE AREA, ALL CLODS, LUMPS, STONES AND OTHER DELETERIOUS MATERIAL SHALL BE RAKED UP AND REMOVED.
- APPLICATION OF GRASS SEED, FERTILIZERS AND MULCH SHALL BE ACCOMPLISHED BY BROADCAST SEEDING OR HYDROSEEDING AT THE RATES OUTLINED BELOW:

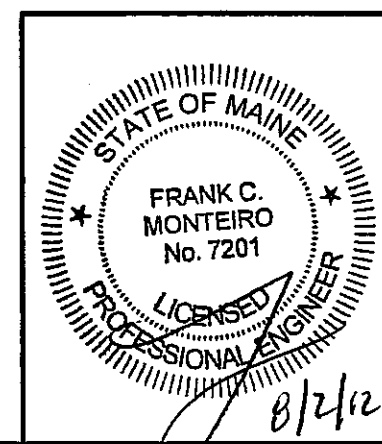
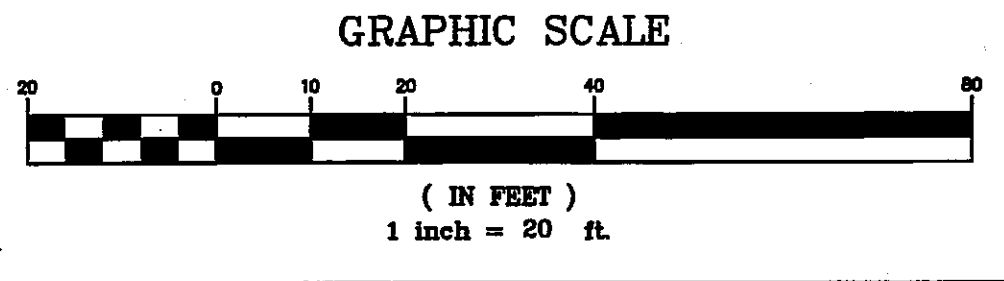
LIMESTONE: 100 LBS./1,000 SQUARE FEET.
FERTILIZER: 500 LBS./ACRE OF 10-20-20 OR 1000 LBS./ACRE OF 5-10-10.
MULCH: HAY MULCH APPROXIMATELY 3 TONS/ACRE

SEED MIX (SLOPES LESS THAN 4:1)	LBS./ACRE
CREeping RED FESCUE	20
TALL FESCUE	15
PERENNIAL RYEGRASS	5
REDTOP	42

- ANY CHANGES IN PLANT LOCATIONS OR TYPES SHALL BE APPROVED BY THE DEVELOPER PRIOR TO INSTALLATION.
- FOR SEED (& SOD) AREAS USE EXISTING TOPSOIL, IF AVAILABLE, FOR A 4" DEPTH AND TOP DRESS WITH 2" OF SCREENED TOPSOIL, UNLESS OTHERWISE NOTED ON PLAN. ALL LOAM OR TOPSOIL IMPORTED OR RE-UTILIZED FROM ON SITE SHALL BE TESTED AND AMENDED AS DIRECTED BY DEVELOPER TO MEET MINIMUM REQUIREMENTS.
- PLANTINGS SHALL BE GUARANTEED BY THE CONTRACTOR FOR ONE YEAR AFTER WRITTEN ACCEPTANCE OF THE DEVELOPER.

LEGEND

	IRON PIN FOUND/SET		UTILITY POLE
	SIGN		SEWER MANHOLE
	OBSERVATION WELL		TELEPHONE MANHOLE
	TREE		WATER VALVE



REVISIONS		
DATE	REV. BY	DESCRIPTION
9/6/11	CMT	REV.BLDG FOOTPRINT, MISC. REVS.
3/29/12	CMT	ADDRESS CITY COMMENTS
6/15/12	CMT	ADDRESS CITY COMMENTS
7/24/12	CMT	REVISE ON-SITE CURBING

31,972 SQUARE FEET
0.734 ACRES
V# 1079
Store# 5604
Gas Station# 851839

44 Siles Road, Suite One
 Salem, New Hampshire 03079
 (603) 893-0720
 ENGINEERS • PLANNERS • SURVEYORS
 www.mhfdesign.com
PORTLAND, MAINE
 801 Washington Ave. & Ocean Ave.

 CUMBERLAND FARMS INC.
 100 CROSSING BLVD.
 FRAMINGHAM, MA 01702
 SCALE: 1" = 20'
 DATE: OCTOBER 5, 2009
 FILE: 2666SP.dwg
 DRAWN BY: MHF
 CHECKED BY:
LANDSCAPE PLAN

F:\Projects\CAD\266609\2666SP.DWG LA 8/02/12 11:45am cmt

