

GENERAL BUILDING DATA

THE FOLLOWING CODES WERE USED IN THE DESIGN OF THIS PROJECT:

FEDERAL, STATE AND MUNICIPAL LAWS
 TOWN OF PORTLAND, MAINE RULES AND/OR REGULATIONS
 INTERNATIONAL BUILDING CODE 2009
 STATE OF MAINE PLUMBING CODE
 STATE OF MAINE ACCESSIBILITY CODE (ADAAG)
 NFPA 1, NFPA 101, NFPA 12

ANY PREVAILING RULES, REGULATIONS PERTAINING TO ADEQUATE PROTECTION AND/OR GUARDING OF ANY MOVING PARTS OR OTHERWISE HAZARDOUS LOCATIONS.

OCCUPANCY CLASSIFICATION - 804

MERCANTILE - GROUP M

ALLOWABLE HEIGHT AND BUILDING AREAS - TABLE 503

HEIGHT LIMITATION	BUILDING HEIGHT
1 STORY	1 STORY - 14'-4"±
AREA LIMITATION	EXISTING BUILDING AREA - TO REMAIN
9,000 SQUARE FEET	3,974 ± SF

TYPE OF CONSTRUCTION - CHAPTER 6

CONSTRUCTION CLASSIFICATION

TYPE 5B UNPROTECTED - COMBUSTIBLE

MAXIMUM FLOOR AREA ALLOWANCES PER OCCUPANT (TABLE 1004.1.2)

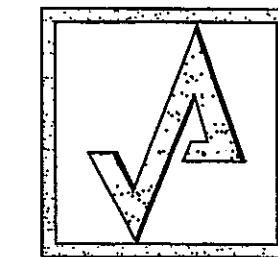
OCCUPANCY	AREA	MINIMUM OCCUPANT LOAD	OCCUPANTS
MERCANTILE AREA (PUBLIC)	1,750	50 SF/PERSON	50
UTILITY AREA (NON-PUBLIC)	2,124	300 SF/PERSON	7
TOTAL			65

EGRESS WIDTH PER OCCUPANT SERVED - TABLE 1005.1

OCCUPANCY	OCCUPANTS	WIDTH PER PERSON	WIDTH REQUIRED	WIDTH PROVIDED
MERCANTILE AREA (PUBLIC)	50	.2"	11.6"	144"
UTILITY AREA (NON-PUBLIC)	7	.2"	1.4"	42"

EXIT ACCESS TRAVEL DISTANCE- TABLE 1016.1

75' MAXIMUM COMMON PATH OF EGRESS TRAVEL
 200' MAXIMUM (WITHOUT SPRINKLER SYSTEM)



AHARONIAN & ASSOCIATES INC.
 ARCHITECTS

310 George Washington Highway
 Suite 100
 Smithfield, Rhode Island
 0 2 9 1 7

T 401-232-5010
 F 401-232-5080
 WWW.ARCH-ENG.COM


DISCLAIMER

OWNERSHIP AND USE OF DOCUMENTS, DRAWINGS AND SPECIFICATIONS ARE INSTRUMENTS OF PROFESSIONAL SERVICE AND SHALL REMAIN THE PROPERTY OF THE ARCHITECT. THESE DOCUMENTS ARE NOT TO BE USED, IN WHOLE OR IN PART, FOR ANY OTHER PROJECTS OR PURPOSES OR BY ANY OTHER PARTIES THAN THOSE PROPERLY AUTHORIZED BY CONTRACT WITHOUT THE EXPRESS WRITTEN AUTHORIZATION OF THE ARCHITECT.

REVISIONS

NUMBER	REMARKS	DATE
1	REVISED	7-29-11
	FLOOR PLAN	
1	CODE INFO	9-20-11

PRELIMINARY

PROJECT TITLE

Cumberland FARMS
 100 Crossing Blvd, Framingham, Massachusetts
 STORE # 5604
 V1079

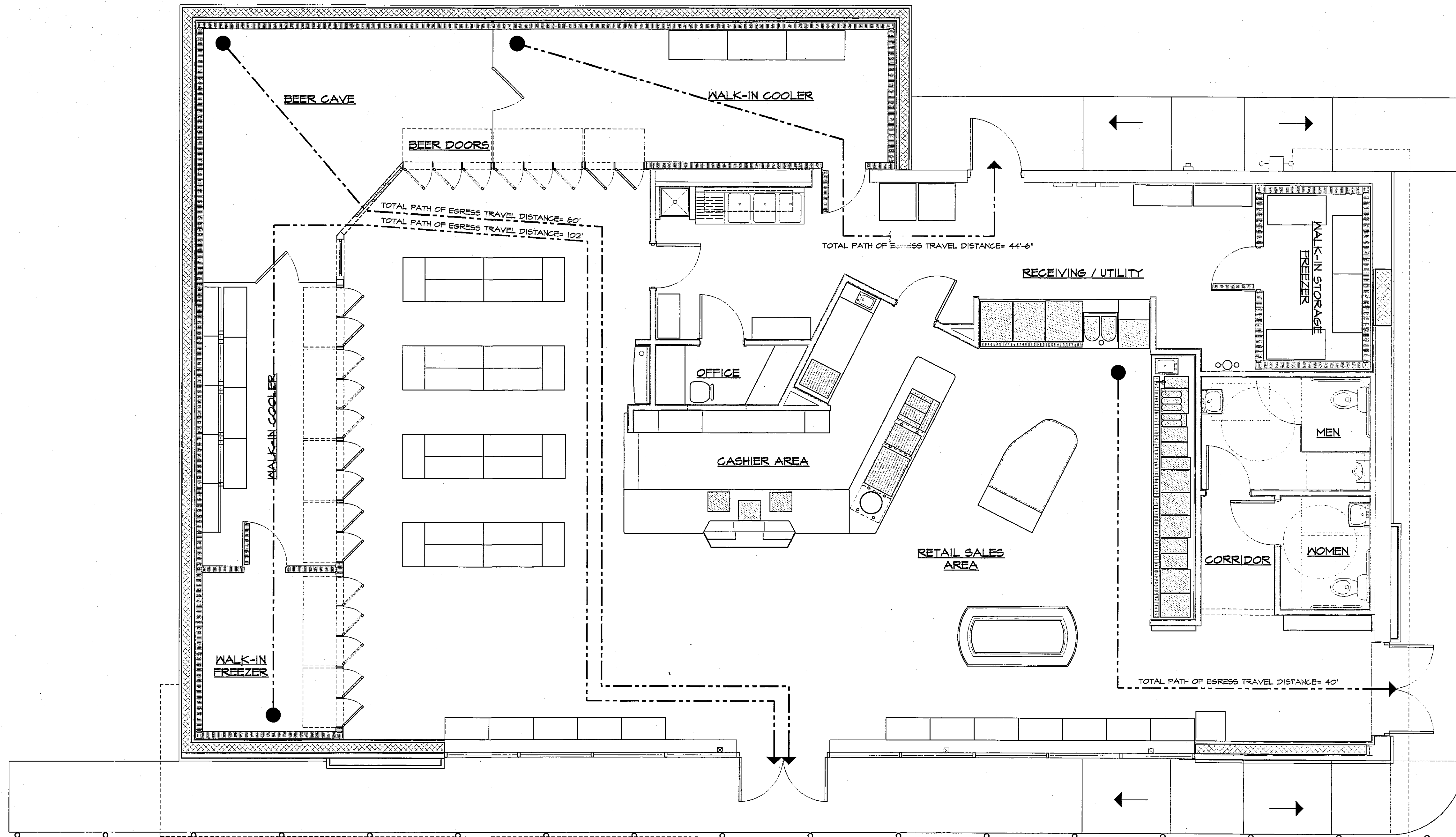
801 WASHINGTON AVE
 PORTLAND, ME
 Cumberland County

PROPOSED LIFE SAFETY PLAN

DATE JULY 18, 2011	PROJ NO 11112
DRAWN BY DH/DR	CHECKED BY AZ
DRAWING NUMBER	

LS1.1

NOT FOR CONSTRUCTION - NOT FOR CONSTRUCTION - NOT FOR CONSTRUCTION



① LIFE SAFETY PLAN
 SCALE: 1/4"=1'-0"
 PLAN