

MISCELLANEOUS CHARTS

VEHICLE CAPACITY

| TYPE | FULL SERVE | SELF SERVE |
|----------------------|------------|------------|
| FUELING | - | 8 |
| WAITING TO BE FUELED | - | 4 |
| TOTALS | - | 12 |

TOTAL NUMBER OF DISPENSING UNITS: (4) GASOLINE
TOTAL NUMBER OF FUELING POSITIONS: (8) GASOLINE

U/G STORAGE TANKS

| TANK | CAPACITY | PRODUCT | TANK TYPE | INSTALL DATE |
|----------------|------------|------------------|-----------|--------------|
| A (SPLIT TANK) | 12,000 GAL | REGULAR GASOLINE | DWFG | PROPOSED |
| B (SPLIT TANK) | 12,000 GAL | REGULAR GASOLINE | DWFG | PROPOSED |
| | 8,000 GAL | PREMIUM | DWFG | PROPOSED |

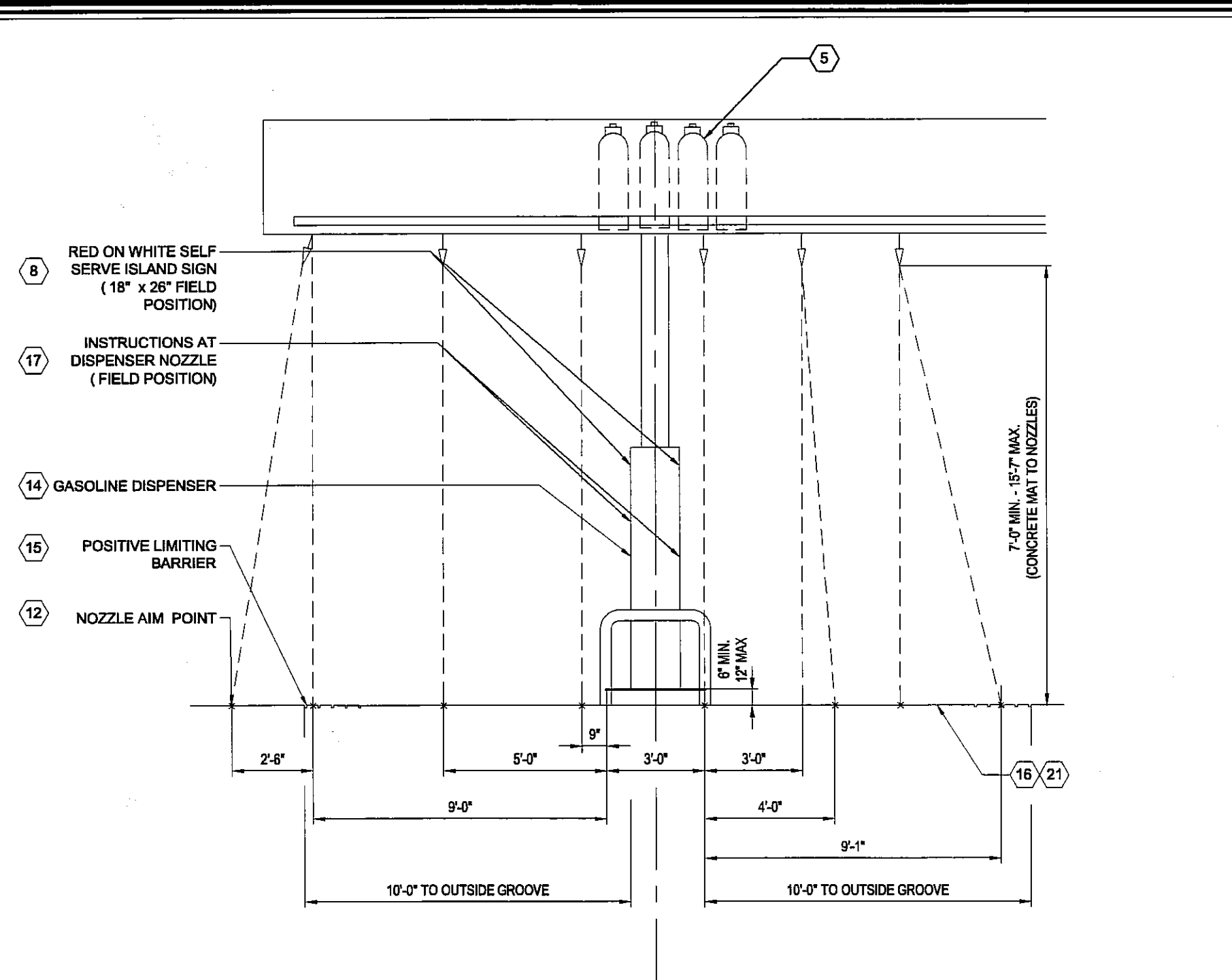
CCTV CAMERAS

| LANE # | FULL/SERF SERVE | SELF SERVE | FULL SERVE |
|-----------|-----------------|------------|------------|
| LANE #1/2 | -- | 1 | -- |
| LANE #3/4 | -- | 1 | -- |
| LANE #5/6 | -- | 1 | -- |
| LANE #7/8 | -- | 1 | -- |

SITE SPECIFIC SYSTEM COMPONENT TABLE *

| NUMBER OF SYSTEMS REQ'D | NUMBER OF NOZZLES REQ'D | NUMBER OF CYL. REQ'D | CYLINDER SIZE & QTY. |
|-------------------------|-------------------------|----------------------|----------------------------|
| (1) 12' LONG SYSTEM | (24) PER SYSTEM | (4) PER SYSTEM | ATD-408C=0 ATD-808C= 4 |
| (4) TOTAL SYSTEMS | (96) TOTAL NOZZLES | (16) TOTAL CYLINDERS | ATD-408C=0 ATD-808C= 16 |

* INCLUDES MAIN AND END OF ISLAND PROTECTION.

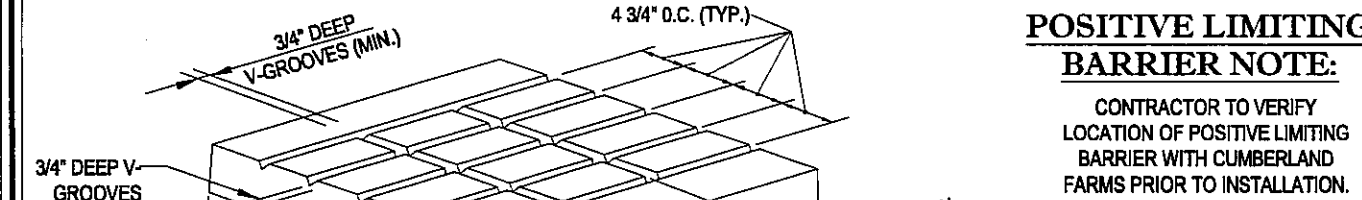


WARNING NO SMOKING-STOP MOTOR

IT IS UNLAWFUL AND DANGEROUS TO DISPENSE GASOLINE INTO UNAPPROVED CONTAINERS. NO FILLING OF PORTABLE CONTAINERS IN OR ON A MOTOR VEHICLE OR TRAILER. PLACE CONTAINER ON GROUND BEFORE FILLING.

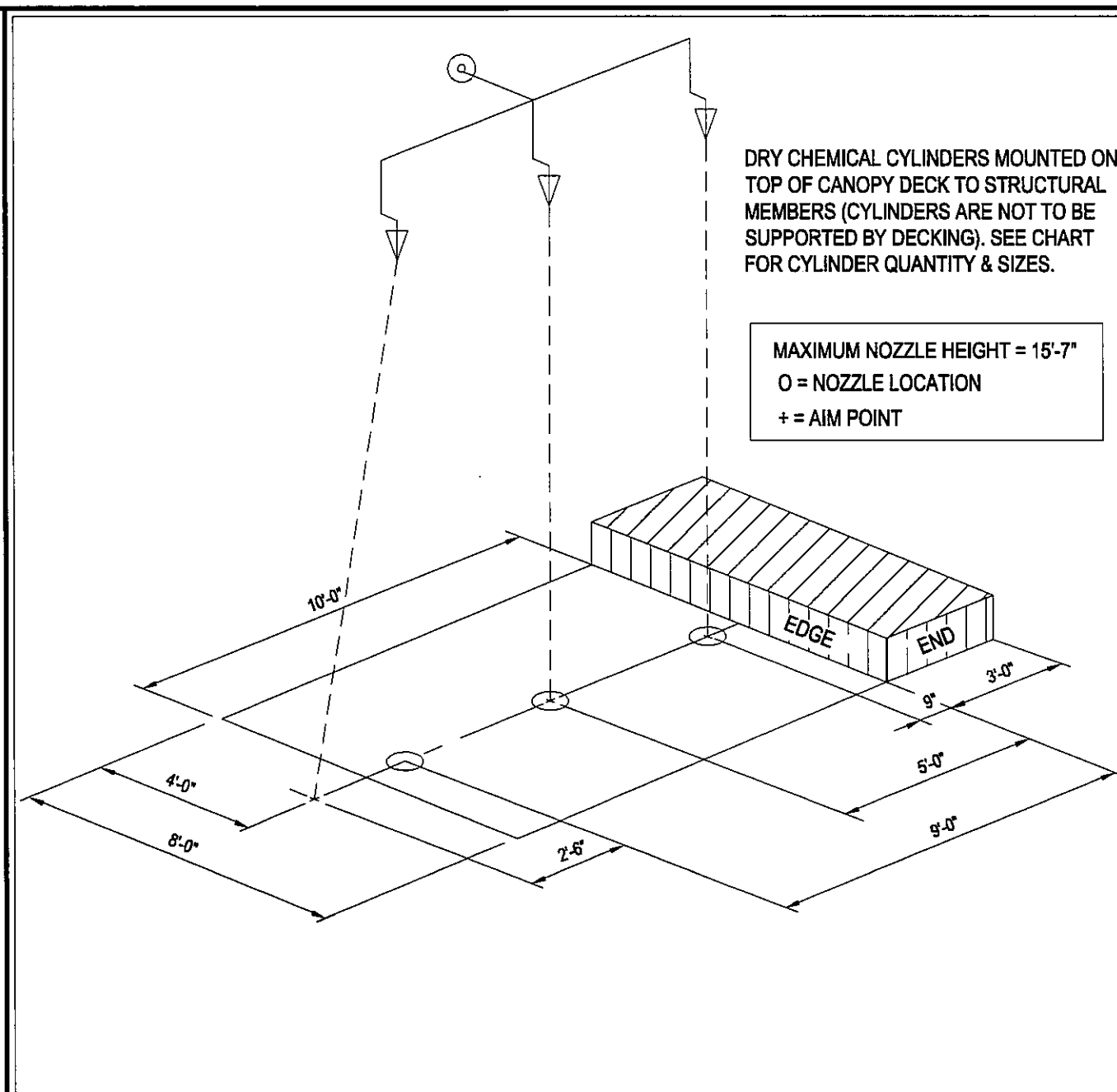
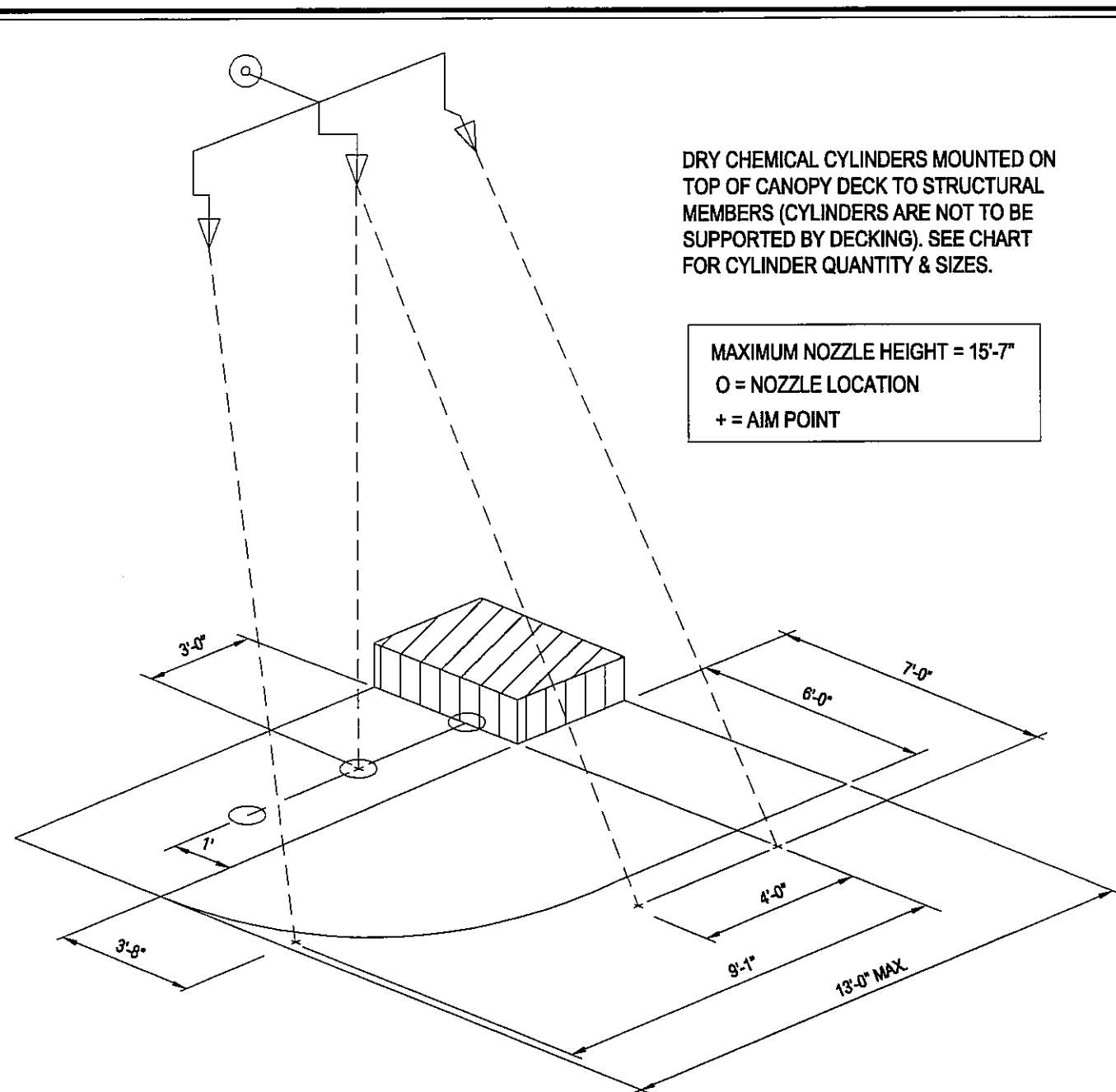
NO SMOKING TURN-OFF ENGINE SIGN
NOT TO SCALE

NOTES: THE WORDS "WARNING" AND "NO SMOKING-STOP MOTOR" SHALL CONSIST OF BLOCK LETTERS NOT LESS THAN ONE INCH IN HEIGHT, WHITE LETTERS ON A RED BACKGROUND. THE REMAINING SENTENCES SHALL CONSIST OF BLOCK LETTERS NOT LESS THAN 1/2" IN HEIGHT, RED LETTERS ON A WHITE BACKGROUND. (WARNING SIGNS SHALL BE CONSPICUOUSLY POSTED ON THE FRONT AND BACK OF THE DISPENSER)



POSITIVE LIMITING BARRIER SAWCUTS AND PATTERNS
NOT TO SCALE

SPECIAL NOTE:
IN THE EVENT OF A CONFLICT BETWEEN THIS DRAWING AND THE UL LISTED PYRO-CHEM INC. "THE ATTENDANT II" TECHNICAL MANUAL, THE TECHNICAL MANUAL SHALL GOVERN.
NOTIFY ENGINEER IMMEDIATELY OF ANY CONFLICT



LEGEND

- 180° HIGH TEMP. AUTOMATIC THERMOSTAT INSTALLED ON 15 FOOT MAXIMUM CENTERS INTERCONNECTED TO FIRE SUPPRESSION SYSTEM CENTER OF EACH ISLAND ABOVE DISPENSERS.
- CCTV CAMERA MOUNTED TO CANOPY COLUMN AT ISLAND WITH CCTV MONITOR(S) LOCATED NEAR CASH REGISTER AT THE TRANSACTION AREA WITHIN THE BUILDING. CCTV MONITORS SHALL DISPLAY ALL CAMERA ANGLES SIMULTANEOUSLY ON THE SCREEN WITH A MINIMUM PICTURE FRAME OF 5 INCHES BY 6 INCHES PER CAMERA.
- INTERCOM SPEAKERS AT EACH DISPENSER WITH MASTER CONTROL LOCATED AT CENTRAL CONTROL AREA.
- OVERHEAD FIRE SUPPRESSION PIPING (SUPPLY).
- DRY CHEMICAL CYLINDERS AS REQUIRED BY MANUFACTURER OF SUPPRESSION SYSTEM WITH REFERENCE TO UL APPROVED INSTALLATION AND MAINTENANCE MANUAL.
- OVERHEAD FIRE SUPPRESSION PIPING (DISTRIBUTION).
- NOZZLE.
- NO SMOKING AND TURN OFF ENGINE SIGN.
- GASOLINE DISPENSER CONTROL CONSOLE EQUIPMENT WITH COMPLETE EQUIPMENT SHUTDOWN EMERGENCY MODE UL APPROVED.
- HAND OPERATED 40 BC FIRE EXTINGUISHER.
- CONTROL CENTER.
- FIRE SUPPRESSION STRIKE POINT - FOR END OF ISLAND NOZZLE AIM POINTS REFER TO THE UL LISTED PYRO-CHEM, INC. "THE ATTENDANT II", TECHNICAL MANUAL.
- SUPPORT COLUMN.
- GASOLINE OR DIESEL DISPENSER UL APPROVED WITH AUTOMATIC CREDIT CARD READING DEVICE.
- POSITIVE LIMITING BARRIER AROUND PERIMETER OF SELF SERVE GASOLINE DISPENSING AREA.
- SELF SERVE GASOLINE DISPENSING AREA.
- APPROPRIATE INSTRUCTIONS FOR USE AT EACH SELF SERVE DISPENSING NOZZLE.
- SAFETY BARRICADE.
- LIGHTING WITHIN SELF SERVE DISPENSING AREA.
- CONCRETE MAT SURROUNDING THE DISPENSING AREA SHALL BE MADE AS LEVEL AS POSSIBLE.
- FACILITY.
- MANUAL RELEASE LOCATED IN CONTROL CENTER CONVENIENT TO ATTENDANT. REMOTE RELEASE ENGINEERED BY FACTORY, INSTALLED BY AUTHORIZED FIRE SUPPRESSION CONTRACTOR.

NOTES

- NOTES TAKEN FROM MAINE DEPARTMENT OF PUBLIC SAFETY CHAPTER 34 "SPECIAL REGULATIONS FOR ATTENDED SELF-SERVICE GASOLINE FACILITIES" PAGES 3 & 4.
- NO ONE SHALL CONSTRUCT, RECONSTRUCT, CONVERT OR ALTER ANY SERVICE STATION TO PROVIDE ATTENDED SELF-SERVICE GASOLINE DISPENSING WITHOUT FIRST NOTIFYING THE OFFICE OF THE STATE FIRE MARSHAL IN WRITING OF THE TYPE AND ADDRESS OF THE FACILITY.
 - EVERY GASOLINE SERVICE STATION SHALL BE UNDER THE DIRECT CONTROL OF THE OWNER, OPERATOR OR DULY AUTHORIZED EMPLOYEE WHO SHALL BE ON DUTY AT ALL TIMES THAT GASOLINE IS BEING SOLD OR DISPENSED.
 - EACH FACILITY SHALL BE EQUIPPED WITH A FIXED FIRE EXTINGUISHING SYSTEM INSTALLED IN ACCORDANCE WITH NFPA 90A, CODE FOR MOTOR DISPENSING FACILITIES AND REPAIR GARAGES, 2003 EDITION. THE SYSTEM SHALL PROVIDE PROTECTION FOR ALL PUMPS IN THE DISPENSING AREA. EACH EXTINGUISHER HEAD SHALL BE INSTALLED IN SUCH A MANNER THAT AN ACCUMULATION OF ICE OR SNOW WILL NOT ADVERSELY AFFECT THE PROPER FUNCTIONING OF THE SYSTEM.
 - THE NUMBER OF NOZZLES CAPABLE OF SIMULTANEOUS OPERATION MAY NOT EXCEED SIXTEEN NOZZLES PER OPERATOR ON DUTY IN ISLANDS OPEN TO USE, AND NO MORE THAN EIGHT NOZZLES MAY BE IN USE AT ONE TIME.
 - THE CONTROLLING MECHANISM CONSOLE AND ITS RELATED EQUIPMENT ARE TO BE LISTED BY UNDERWRITERS LABORATORIES.
 - IN ADDITION TO THE REQUIRED OPERATING INSTRUCTIONS SET FORTH IN NFPA 90A, SIGNAGE SHALL INCLUDE A REQUIREMENT THAT THE USER STAY IN VIEW OF THE FUELING NOZZLE DURING DISPENSING.
 - THE CONTROLLING CONSOLE PROVIDING POWER TO THE PUMP MOTOR MUST BE MONITORED BY THE OWNER, OPERATOR OR DULY AUTHORIZED EMPLOYEE AT ALL TIMES WITH GASOLINE IS BEING DISPENSED AND PROPERLY PROTECTED AGAINST PHYSICAL DAMAGE FROM MOTOR VEHICLES.
 - THERE SHALL BE CONSTANT CONTACT BY THE CONTROL CONSOLE OPERATOR AND THE PUMP ISLAND BY MEANS OF INTER-COMMUNICATION SYSTEM THAT SHALL BE MAINTAINED IN PROPER OPERATING CONDITIONS.
 - THE CONTROL CONSOLE OPERATOR MUST OBSERVE THE FILLING OPERATION OF EACH VEHICLE. MIRRORS ARE NOT ACCEPTABLE AS PROVIDING ADEQUATE VISUAL CONTROL.
 - THE PRIMARY FIRE DEPARTMENT HAVING JURISDICTION OR PROVIDING MUTUAL AID IN THE AREA IN THE AREA IN WHICH A PROPOSED SELF-SERVICE STATION IS TO BE LOCATED SHALL BE INFORMED OF SUCH PROPOSAL AND THE REQUIREMENTS OF ALL LOCAL ORDINANCE MUST BE MET.
 - THE OPERATIONS PERMIT MUST BE POSTED IN THE PLAN VIEW OF THE PUBLIC, UNOBSTRUCTED, AT THE SITE.
 - AN AUTOMATIC-CLOSING TYPE HOSE NOZZLE VALVE LISTED WITH UNITED LABORATORIES (OR OTHER RECOGNIZED AGENCY APPLYING AN EQUIVALENT TEST) WITH LATCH-OPEN DEVICE MAY BE INSTALLED.
 - THE OWNER OR OPERATOR OF ANY ATTENDED SELF-SERVICE FACILITY EXISTING PRIOR TO THE DATE OF THIS RULE MUST NOTIFY THE OFFICE OF THE STATE FIRE MARSHAL IN WRITING OF BY JULY 1, 2006.

HAVE ACKNOWLEDGMENT OF: CHIEF OF DEPARTMENT OR HIS DESIGNEE, HAVE REVIEWED THE ATTACHED INFORMATION AND CITY/TOWN: DATE:

FOR FIRE MARSHAL USE:

BOHLER ENGINEERING

CONTRACT OFFICE: OFFICER: SURVEYORS PROJECT MANAGERS ENVIRONMENTAL CONSULTANTS LANDSCAPE ARCHITECTS

CHAFFONT, PA
FRANKFORD, PA
WARRINGTON, VA
GREENSBORO, NC
TAMPA, FL

NEW YORK, NY
ALBANY, NY
CENTER VALLEY, PA

CIVIL & CONSULTING ENGINEERS

REVISIONS

| REV | DATE | COMMENT | BY |
|-----|------|---------|----|
| 1 | | | |
| 2 | | | |
| 3 | | | |
| 4 | | | |
| 5 | | | |
| 6 | | | |
| 7 | | | |
| 8 | | | |
| 9 | | | |

THE FOLLOWING STATES REQUIRE NOTIFICATION BY EDUCATORS, DESIGNERS, OR ANY PERSON PREPARING TO DISTURB THE EARTH'S SURFACE ANYWHERE IN THE STATE:

(MA, ME, NH, RI, VT 1-888-344-7233)
(CT 1-800-22-4662)
(NY 1-800-962-7662)

PERMIT PLAN

PROJECT No.: W041823
DRAWN BY: S.J.L.
CHECKED BY: L.M.D.
DATE: 11/03/2011
SCALE: AS NOTED
CAD I.D.: PORTLAND_50

FIRE SUPPRESSION PLAN

FOR

CUMBERLAND FARMS

801 WASHINGTON AVENUE & OCEAN AVENUE
CITY OF PORTLAND
CUMBERLAND COUNTY
MAINE

BOHLER ENGINEERING

352 TURNPIKE ROAD
SOUTHBOROUGH, MA 01772
Phone: (508) 480-9900
Fax: (508) 480-9080
www.BohlerEngineering.com

S.P. DECOURSEY

REGISTERED PROFESSIONAL ENGINEER
STATE OF MAINE LICENSE NO. 1010
EXPIRES 12/31/2011
1000 WASHINGTON ST., SUITE 200
PORTLAND, ME 04101
TEL: 603-875-1111 FAX: 603-875-1112

PYRO-CHEM, INC. "THE ATTENDANT II" GASOLINE FIRE SUPPRESSION SYSTEM

SHEET NUMBER: 1 OF 1

REVISIONS 0 - 11/03/2011