

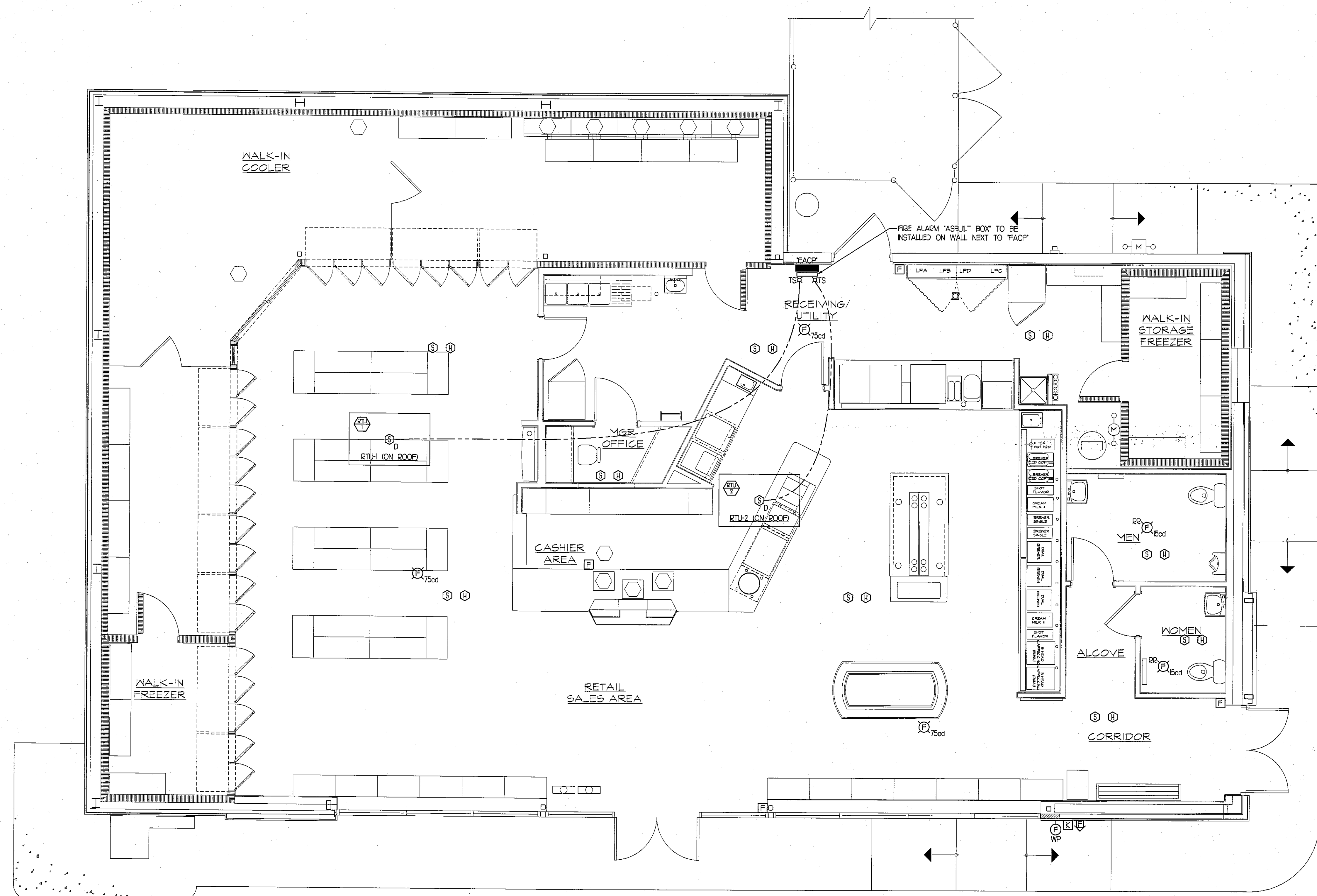
FIRE ALARM ONE-LINE DIAGRAM
SCALE: NOT TO SCALE

FIRE ALARM LEGEND:

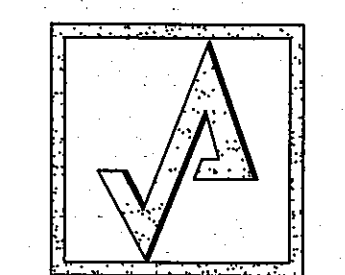
- FIRE ALARM SYSTEM ADA TYPE CEILING MOUNTED 75db/750d HORN/ STROBE UNIT.
- FIRE ALARM SYSTEM ADA TYPE CEILING MOUNTED 60d STROBE ONLY UNIT.
- MANUAL PULL STATION, MOUNTED 48" ABOVE FINISHED FLOOR.
- CEILING MOUNTED PHOTOELECTRIC, SYSTEM TYPE SMOKE DETECTOR.
- DUCT MOUNTED SMOKE DETECTOR. UPON ACTIVATION, THE RESPECTIVE AIR HANDLING UNIT, AND ASSOCIATED SMOKE AND FIRE DAMPERS SHALL BE DE-ACTIVATED.
- AUTOMATIC HEAT DETECTOR 135 DEGREES FIXED TEMPERATURE WITH ZONE ADDRESSABLE MODULE. HEAT DETECTORS MOUNTED ABOVE CEILING.
- FIRE ALARM CONTROL PANEL.
- FIRE ALARM WEATHERPROOF BEACON.
- REMOTE INDICATOR.
- REMOTE INDICATOR WITH TEST STATION.
- ADDRESSABLE MONITOR MODULE.
- ADDRESSABLE CONTROL MODULE.
- KNOX BOX.
- 60 HOUR BATTERY.
- FIRE ALARM SYSTEM MASTER BOX.
- POWER LIMITED FIRE ALARM CABLE TYPE 'FPLP'

FIRE ALARM NOTES:

1. ELECTRICAL CONTRACTOR SHALL FINISH AND INSTALL A COMPLETE ANALOG/ ADDRESSABLE MICRO-PROCESSOR BASED, FIRE ALARM SYSTEM AS INDICATED AND AS SPECIFIED. ALL FIRE ALARM CIRCUIT WIRING SHALL BE POWER LIMITED FIRE ALARM CABLE. AUDIO/VISUAL CIRCUITS SHALL BE 2" x 1/4" POWER LIMITED FIRE ALARM CABLE. AS MENTIONED ABOVE CIRCUITS SHALL BE ARRANGED CLASS 'A'.
2. ELECTRICAL CONTRACTOR SHALL UTILIZE ALARM VERIFICATION AS A STANDARD FEATURE FOR ALL ADDRESSABLE SMOKE DETECTORS.
3. THE CONTRACTOR, BEFORE INSTALLATION OR PROCUREMENT OF EQUIPMENT, SHALL SUBMIT A SHOP DRAWING OF ALL THE DEVICES BEING SUPPLIED FOR THIS PROJECT. THE SHOP DRAWING SHALL INCLUDE, AS PART OF THE SUBMITTAL PACKAGE, A ONE-LINE DIAGRAM INDICATING HOW THE SYSTEM WILL OPERATE.
4. ALL PULL AND JUNCTION BOXES AS WELL AS 6" OF ANY CONDUIT ENTERING OR LEAVING ANY PULL OR JUNCTION BOX SHALL BE PAINTED RED.
5. FIRE ALARM SYSTEM SHALL BE MANUFACTURED BY NOTIFER OR EQUAL.
6. UPON ACTIVATION OF AIR HANDLING UNIT DUCT SMOKE DETECTOR, THE RESPECTIVE UNIT AND ASSOCIATED SMOKE AND FIRE DAMPERS SHALL BE DE-ACTIVATED.
7. ELECTRICAL CONTRACTOR SHALL BE RESPONSIBLE FOR A SET OF AS-BUILT DRAWINGS OF THE FIRE ALARM SYSTEM. AS-BUILT DRAWINGS SHALL INDICATE THE LOCATION OF THE CONTROL PANEL, ALL FIRE ALARM DEVICES AND WIRING INSTALLED. AS-BUILT DRAWINGS SHALL BE TURNED OVER TO THE OWNER'S PROJECT REPRESENTATIVE.
8. ELECTRICAL CONTRACTOR SHALL BE RESPONSIBLE FOR CONNECTING THE FIRE ALARM SYSTEM COMMUNICATOR TO AN UL APPROVED CENTRAL STATION USING 4/C #24 CAT3 CABLES.
9. THE FIRE ALARM SYSTEM SHALL BE IN ACCORDANCE WITH NFPA 72. ANY CHANGES TO THE SYSTEM DESIGN SHALL BE PRE-APPROVED BY THE LOCAL FIRE DEPARTMENT AND VINCENT A. DIORIO INC.
10. FIRE ALARM ONE-LINE DIAGRAM IS COMPLIMENTARY TO THE FLOOR PLAN WHERE A CONFLICT ARISES THE MOST STRINGENT CONDITION SHALL PREVAIL.
11. ALL AUDIO/VISUAL DEVICES SHALL BE SYNCHRONIZED CODE 3, TEMPORAL PATTERN.



© AHARONIAN & ASSOCIATES INC 2012



AHARONIAN & ASSOCIATES INC.
ARCHITECTS

310 George Washington Highway
Suite 100
Smithfield, Rhode Island
0 2 9 1 7

T 401-232-5010
F 401-232-5080
WWW.ARCH-ENG.COM

DISCLAIMER

OWNERSHIP AND USE OF DOCUMENTS, DRAWINGS AND SPECIFICATIONS ARE INSTRUMENTS OF PROFESSIONAL SERVICE AND SHALL REMAIN THE PROPERTY OF THE ARCHITECT. THESE DOCUMENTS ARE NOT TO BE USED, IN WHOLE OR IN PART, FOR ANY OTHER PROJECTS OR PURPOSES OR BY ANY OTHER PARTY THAN THOSE PROPERLY AUTHORIZED BY CONTRACT WITHOUT THE EXPRESS WRITTEN AUTHORIZATION OF THE ARCHITECT.



REVISIONS

NUMBER	REMARKS	DATE



VINCENT A. DIORIO, INC.
CONSULTING ENGINEERS

89 Access Road Suite Eighteen
Norwood, Massachusetts 02062
tel: (781) 255-9754 fax: (781) 255-9725 email: vadjr@vadeng.com

FOR CONSTRUCTION

PROJECT TITLE

Cumberland FARMS

100 Crossing Blvd, Framingham, Massachusetts
STORE # 5604
Vxxxx

801 WASHINGTON AVE
PORTLAND, ME
Cumberland County

DRAWING TITLE

FIRE ALARM PLAN

DATE JULY 20, 2012	PROJ NO 1112
DRAWN BY DJH	CHECKED BY VAD JR

DRAWING NUMBER

FA0.01