

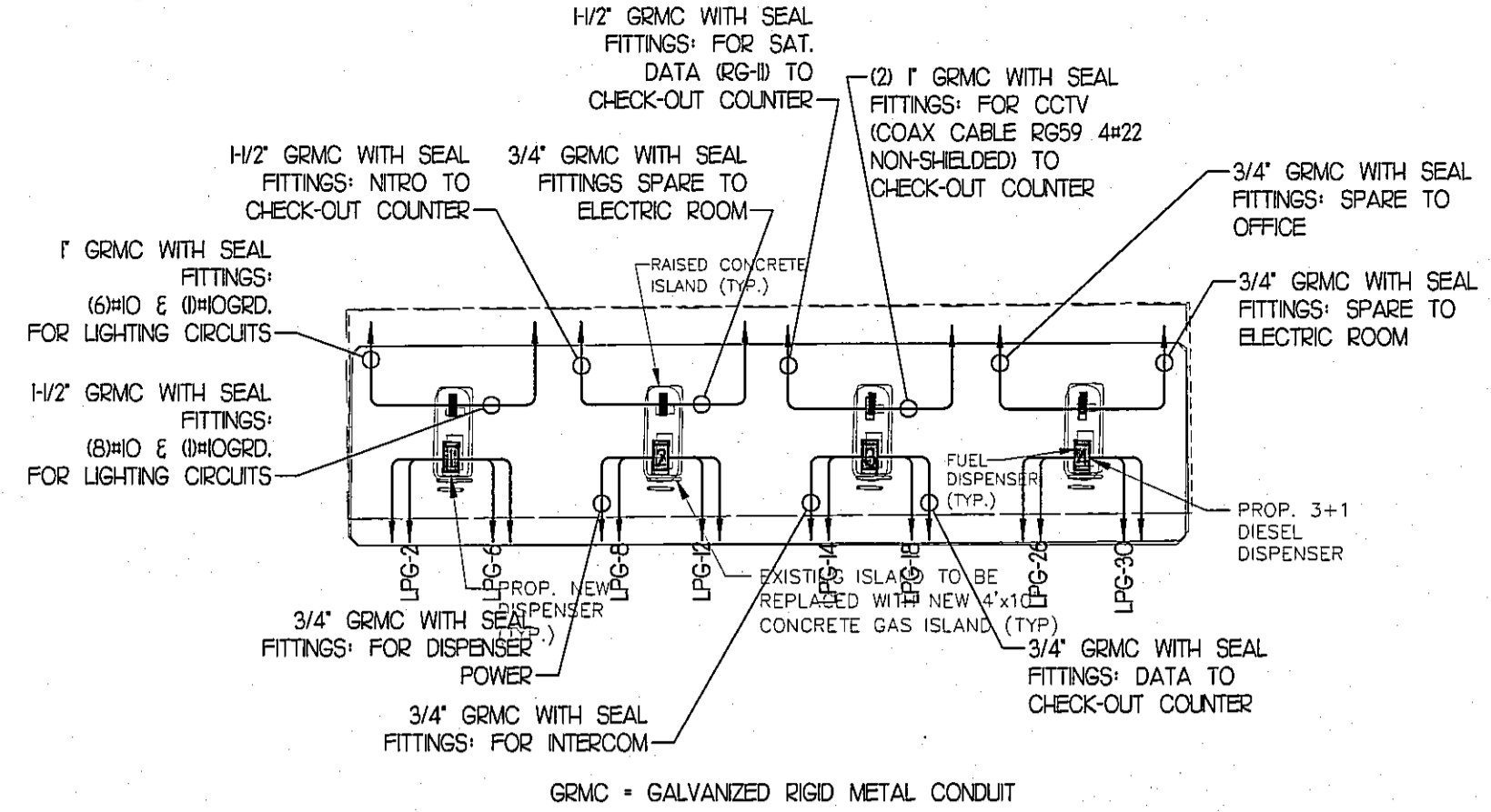
LIGHTING FIXTURE SCHEDULE

ALL FLUORESCENT BALLASTS SHALL BE OF THE ELECTRONIC, UNIVERSAL TYPE MANUFACTURED BY ADVANCE OR EQUAL

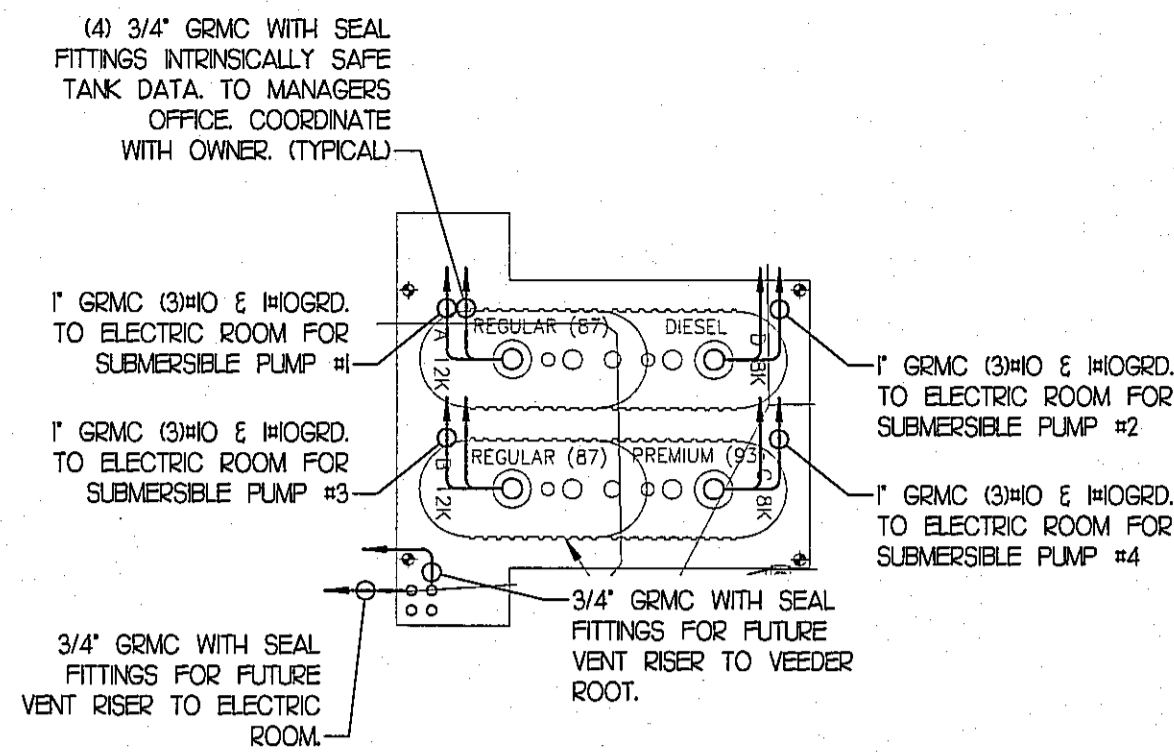
QTY	DESIG	MANUFACTURER	CATALOG NUMBER	MTG	VOLT	LAMP		REMARKS
						QTY	DESCRIPTION	
8	AA	LSI	CRO3-FO-LED-30-CW-H20-240V	R	120	-	LED (40 WATTS)	CANOPY
5	BB	LSI	XAS3-FL-LED-63-350-CW-LE 1558 SINGLE ON 14" POLE + 2" BASE	POLE	120	-	LED (75 WATTS)	AREA FIXTURE W/ 14" POLE
2	DD	LSI	XAWS3-3-LED-63-350-CW-LE	R	120	-	LED (75 WATTS)	EXTERIOR WALL PACK
4	EE	LSI	CRO3-S-LED-64-350-CW-LE	R	120	-	LED (75 WATTS)	CANOPY
6	FF	LSI	CRO3-A-LED-64-350-CW-LE	R	120	-	LED (76 WATTS)	CANOPY

MOUNTING KEY:
 P - PENDANT MOUNTED S - SURFACE MOUNTED W - WALL MOUNTED
 R - RECESSED MOUNTED U - UNIVERSAL MOUNTED

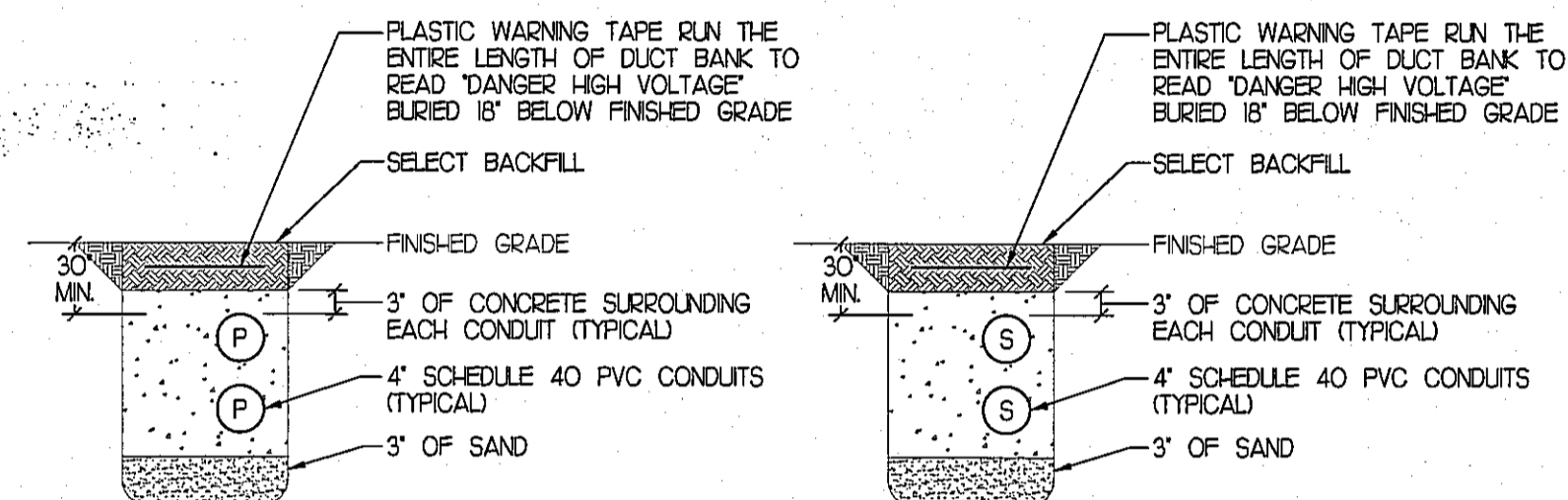
NOTE:
 ALL LAMPS TO BE MANUFACTURED BY GENERAL ELECTRIC, PHILLIPS OR SYLVANIA



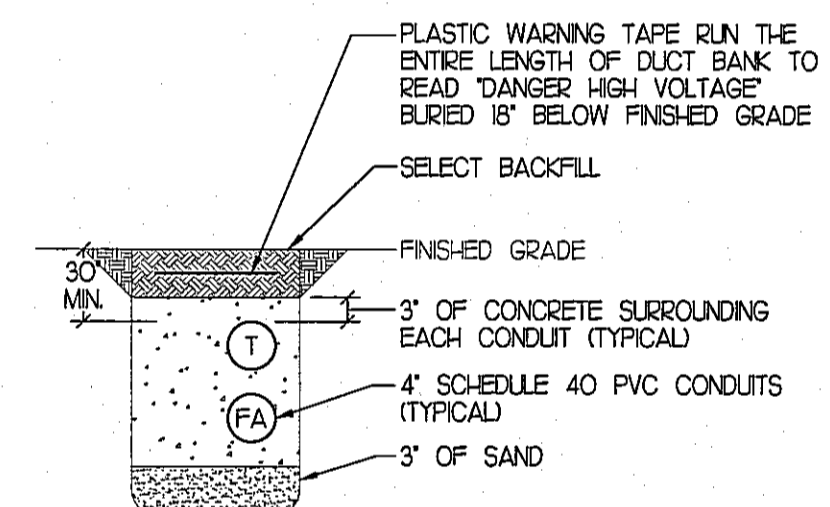
UNDER CANOPY POWER PART PLAN
 SCALE: 1" = 20'-0"



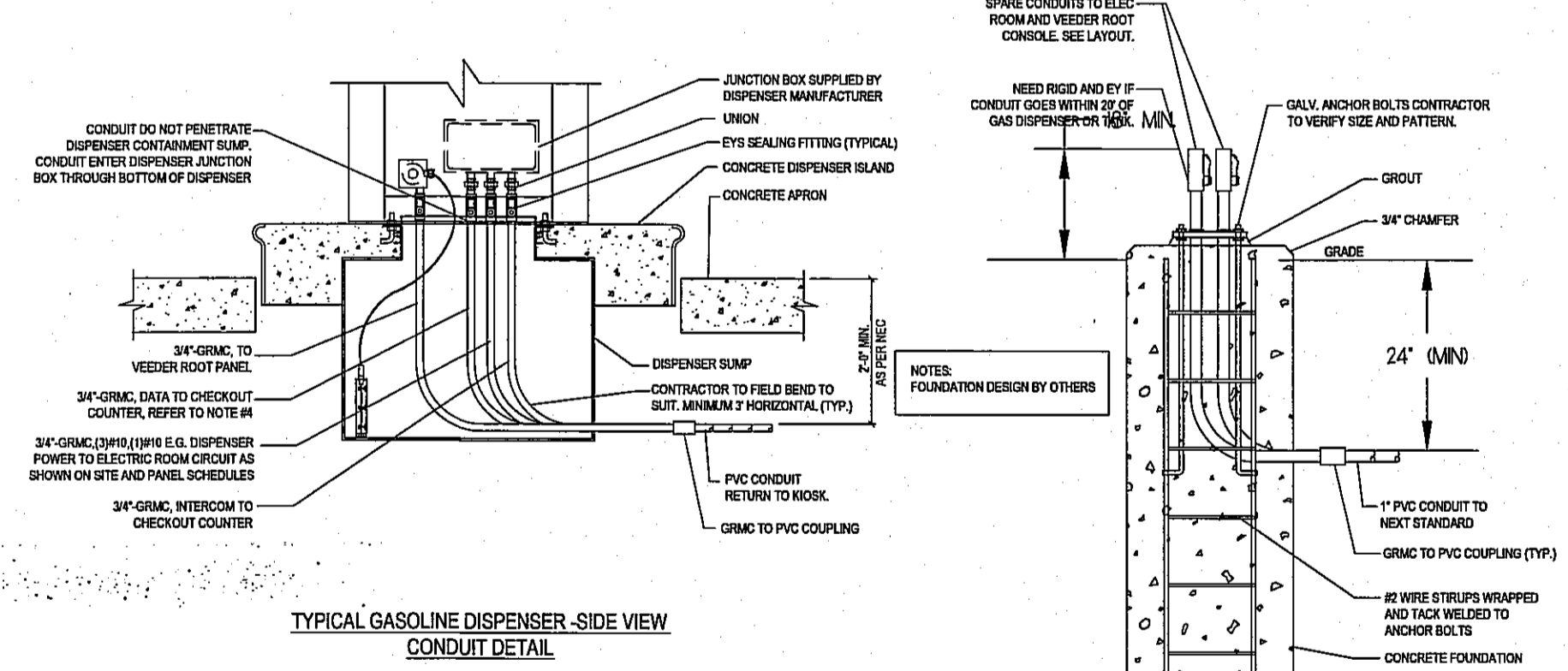
FUEL STORAGE PART PLAN
 SCALE: 1" = 20'-0"



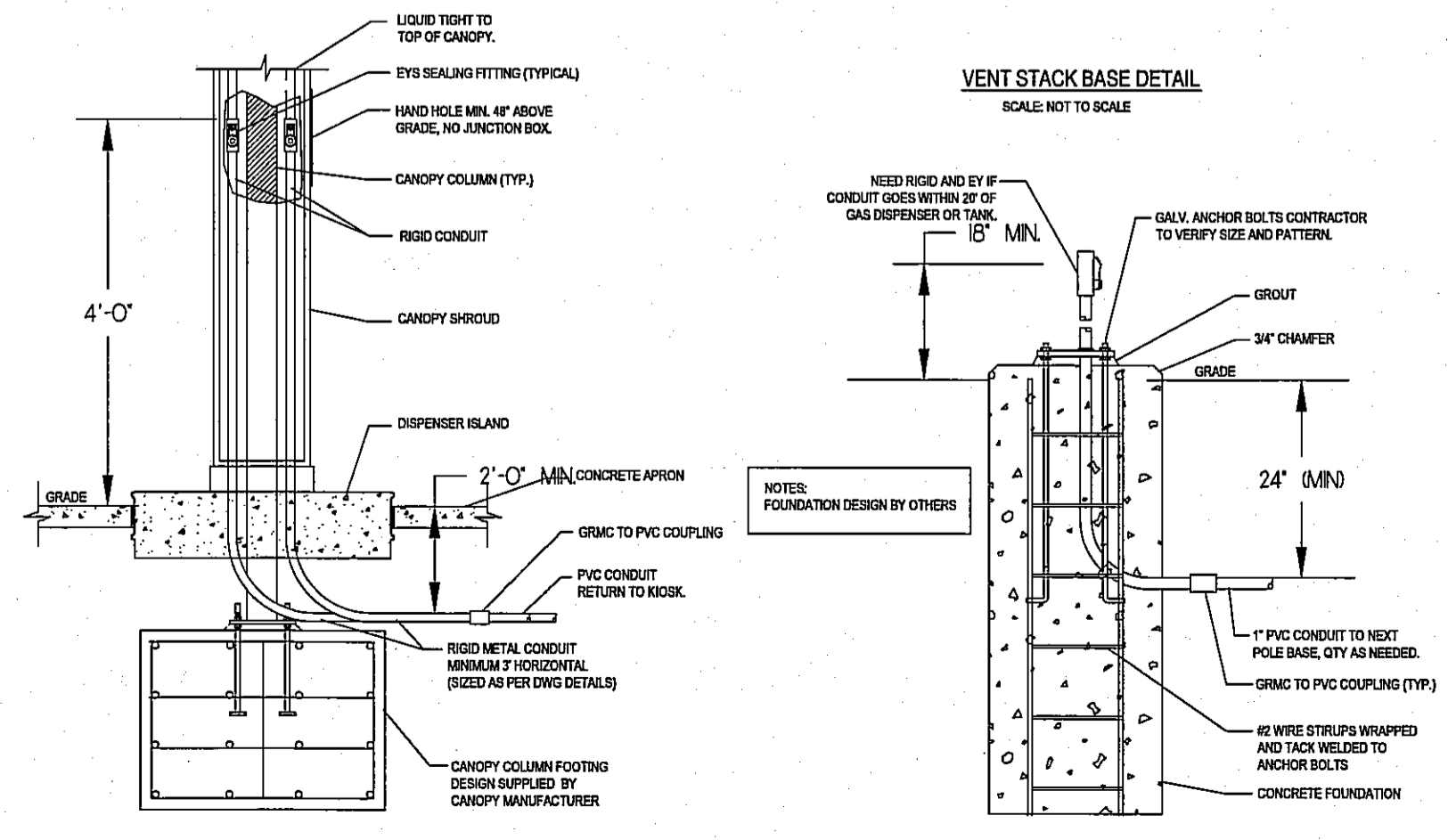
SECTION A-A SCALE: NOT TO SCALE
SECTION B-B SCALE: NOT TO SCALE



SECTION C-C
 SCALE: NOT TO SCALE

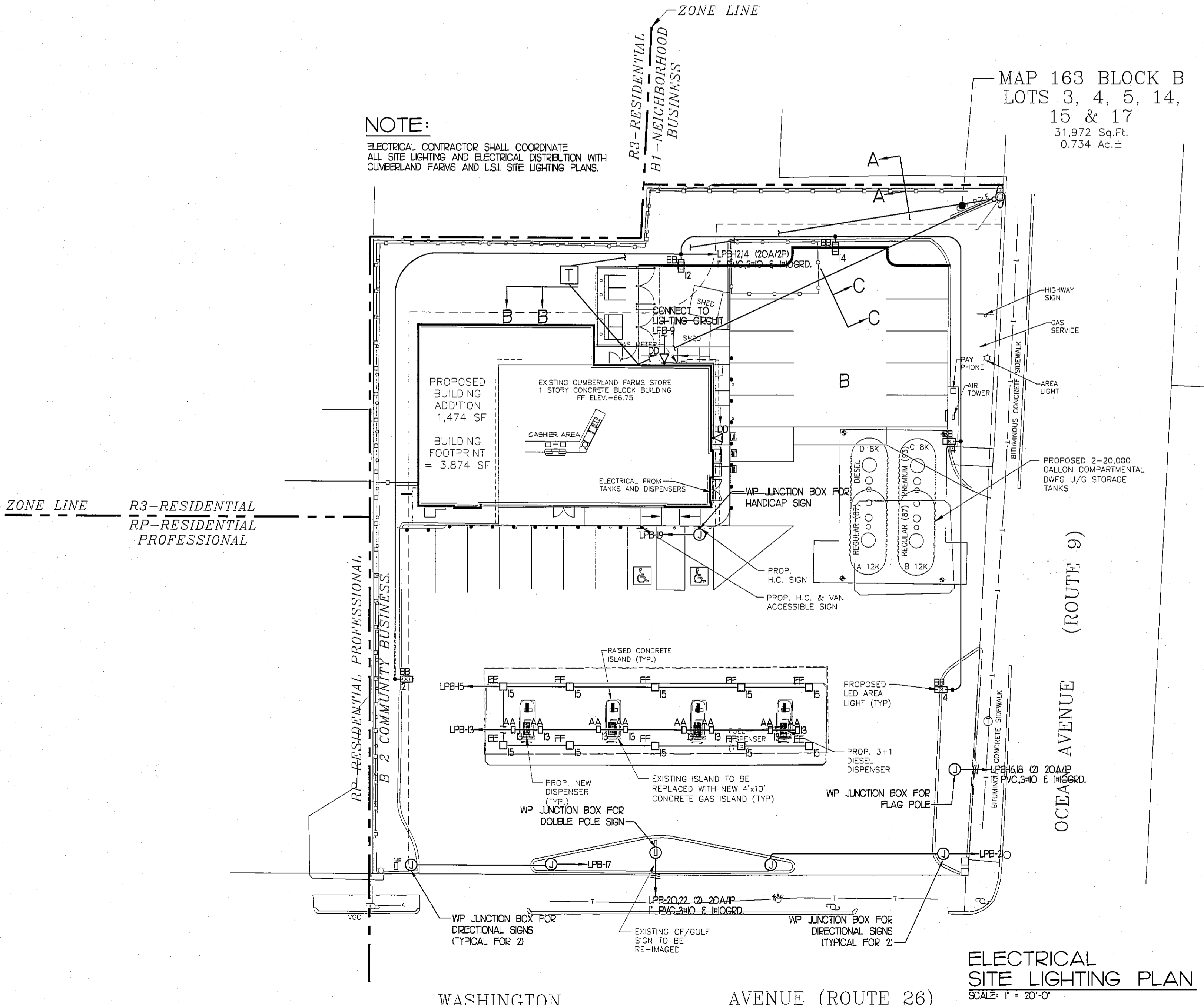


TYPICAL GASOLINE DISPENSER SIDE VIEW CONDUIT DETAIL



TYPICAL GASOLINE CANOPY COLUMN DETAIL SCALE: NOT TO SCALE
LIGHT POLE BASE DETAIL SCALE: NOT TO SCALE

NOTE:
 ELECTRICAL CONTRACTOR SHALL COORDINATE ALL SITE LIGHTING AND ELECTRICAL DISTRIBUTION WITH CUMBERLAND FARMS AND LSI SITE LIGHTING PLANS.

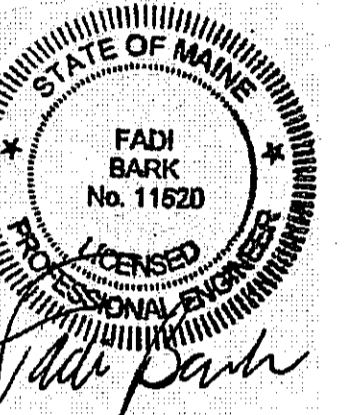


ELECTRICAL SITE LIGHTING PLAN
 SCALE: 1" = 20'-0"



AHARONIAN & ASSOCIATES INC. ARCHITECTS
 310 George Washington Highway
 Suite 100
 Smithfield, Rhode Island
 02917
 T 401-232-5010
 F 401-232-5080
 WWW.ARCH-ENG.COM

DISCLAIMER
 OWNERSHIP AND USE OF DOCUMENTS, DRAWINGS AND SPECIFICATIONS ARE INSTRUMENTS OF PROFESSIONAL SERVICE AND SHALL REMAIN THE PROPERTY OF THE ARCHITECT. THESE DOCUMENTS ARE NOT TO BE USED, IN WHOLE OR IN PART, FOR ANY OTHER PROJECTS OR PURPOSES OR BY ANY OTHER PARTIES THAN THOSE PROPERLY AUTHORIZED BY CONTRACT WITHOUT THE EXPRESS WRITTEN AUTHORIZATION OF THE ARCHITECT.



REVISIONS

NUMBER	REMARKS	DATE



VINCENT A. DIORIO, INC. CONSULTING ENGINEERS
 89 Adams Road, Suite Eighteenth
 Norwood, Massachusetts 02062
 tel: (781) 255-9754 fax: (781) 255-9725 email: vadjr@vadeng.com

FOR CONSTRUCTION

PROJECT TITLE
Cumberland FARMS
 100 Crossing Blvd, Framingham, Massachusetts
 STORE # 5604
 Vxxxx

801 WASHINGTON AVE
PORTLAND, ME
 Cumberland County

DRAWING TITLE
ELECTRICAL SITE PLAN

DATE JULY 20, 2012	PROJ NO 11112
DRAWN BY DJH	CHECKED BY VAD JR

DRAWING NUMBER
E4.01

© AHARONIAN & ASSOCIATES INC 2012