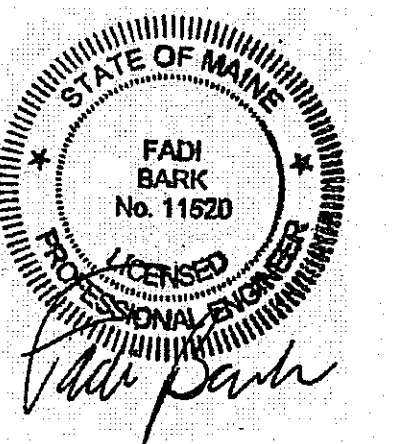


**AHARONIAN
& ASSOCIATES INC.**
ARCHITECTS

310 George Washington Highway
Suite 100
Smithfield, Rhode Island
0 2 9 1 7
T 401-232-5010
F 401-232-5080
WWW.ARCH-ENG.COM

DISCLAIMER

OWNERSHIP AND USE OF DOCUMENTS, DRAWINGS AND SPECIFICATIONS ARE INSTRUMENTS OF PROFESSIONAL SERVICE AND SHALL REMAIN THE PROPERTY OF THE ARCHITECT. THESE DOCUMENTS ARE NOT TO BE USED, IN WHOLE OR IN PART, FOR ANY OTHER PROJECTS OR PURPOSES OR BY ANY OTHER PARTIES THAN THOSE PROPERLY AUTHORIZED BY CONTRACT WITHOUT THE EXPRESS WRITTEN AUTHORIZATION OF THE ARCHITECT.



REVISIONS

NUMBER	REMARKS	DATE



VINCENT A. DIORIO, INC.
CONSULTING ENGINEERS
89 Access Road, Suite Eighteen
Norwood, Massachusetts 02062
tel: (781) 255-9754 fax: (781) 255-9725 email: vadjr@vadeng.com

FOR CONSTRUCTION

PROJECT TITLE

**Cumberland
FARMS**
100 Crossing Blvd, Framingham, Massachusetts
STORE # 5604
Vxxxx

801 WASHINGTON AVE
PORTLAND, ME
Cumberland County

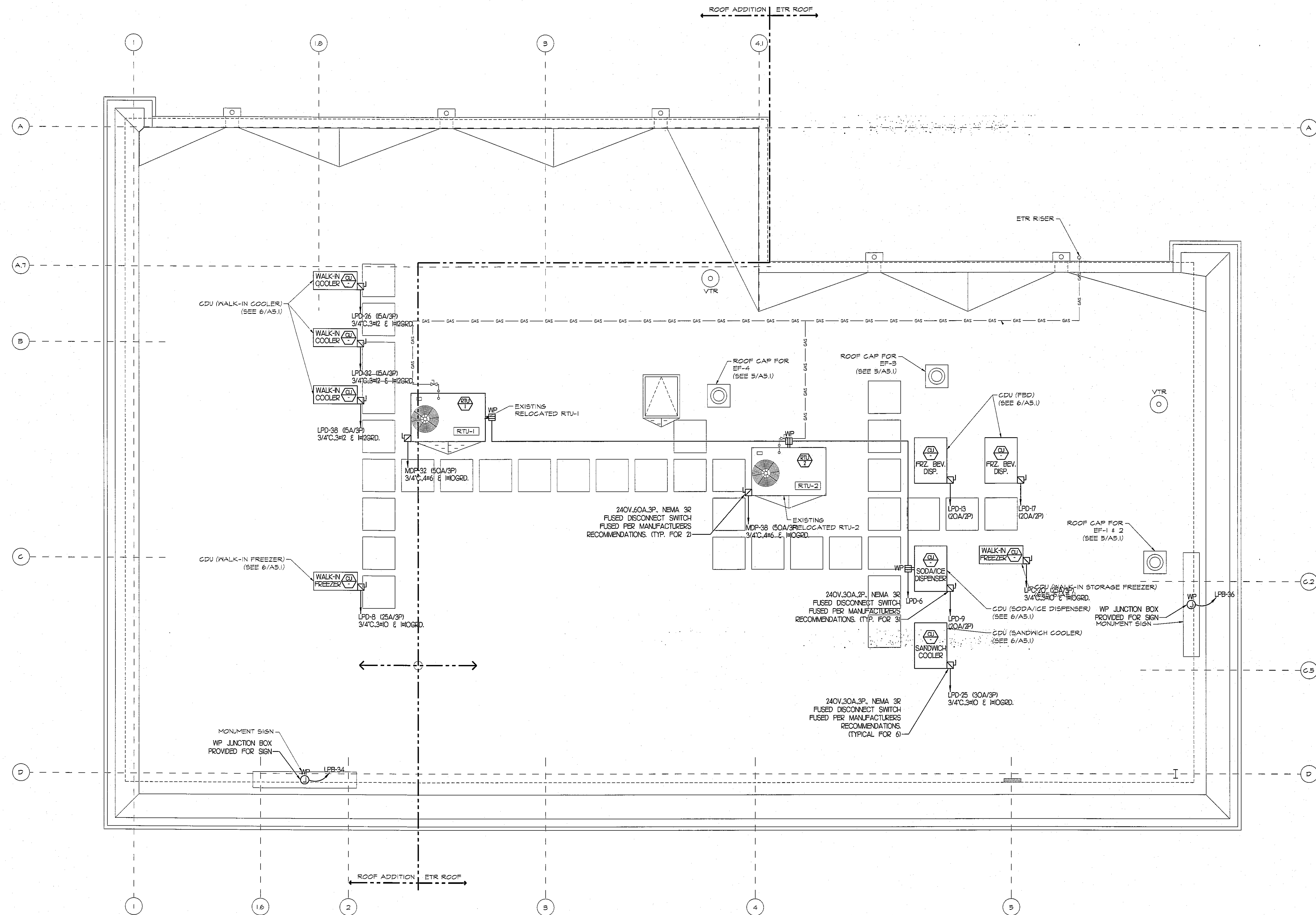
DRAWING TITLE

**ELECTRICAL ROOF
POWER PLAN**

DATE JULY 20, 2012	PROJ NO 11112
DRAWN BY DJH	CHECKED BY VAD JR

DRAWING NUMBER

E3.01



© AHARONIAN & ASSOCIATES INC. 2012