

**LIGHTING NOTES**

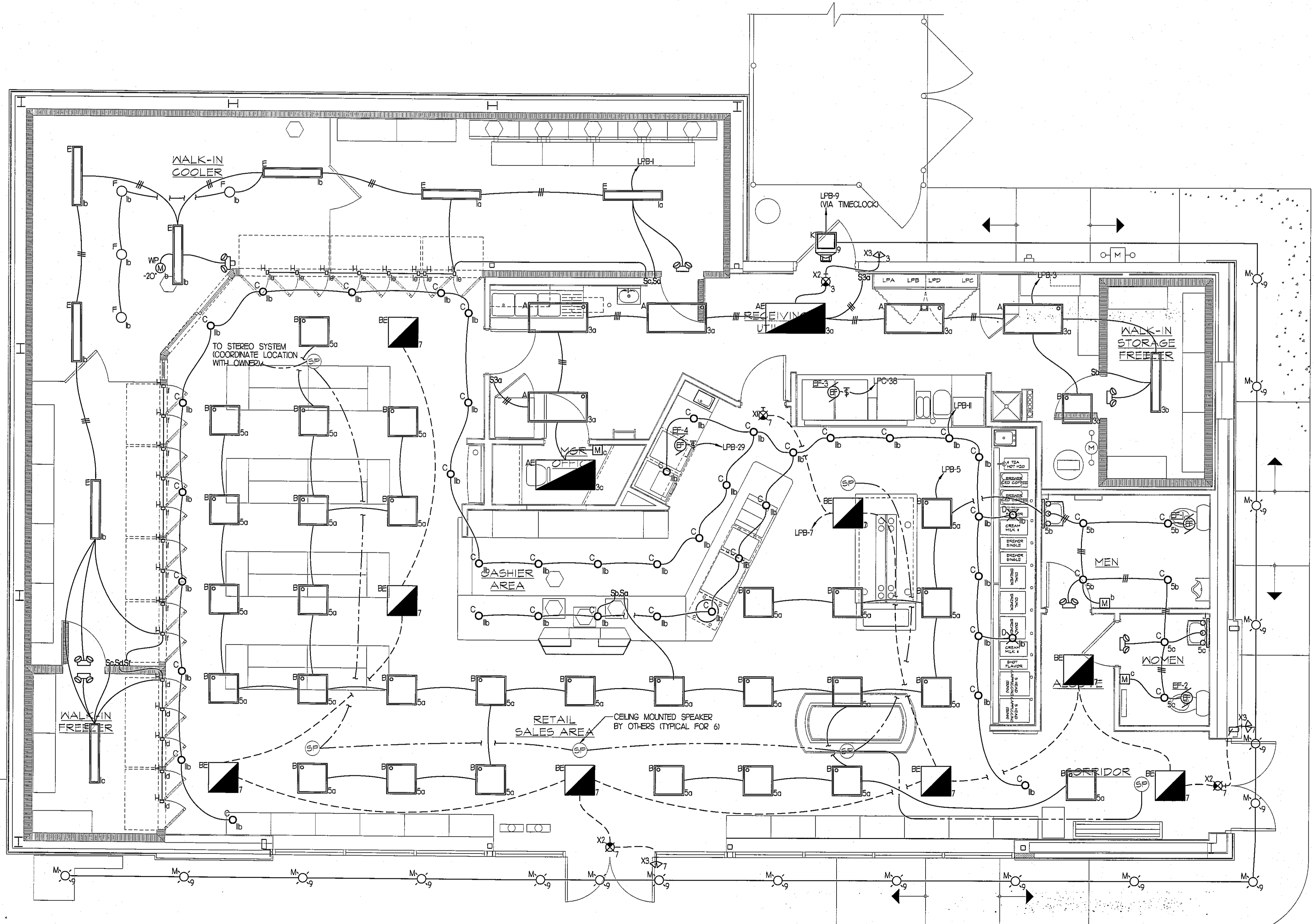
1. REFER TO DRAWING E0.01 FOR GENERAL NOTES AND LEGEND.
2. REFER TO ARCHITECTURAL REFLECTED CEILING PLAN FOR EXACT PLACEMENT OF FIXTURES.
3. REFER TO BUILDING ELEVATIONS FOR EXACT LOCATION OF WALL MOUNTED FIXTURES.
4. ALL EXTERIOR LIGHTING CONTROLLED VIA THE TIMECLOCK CONTROLLER AND MANUAL OVER-RIDE SWITCH.
5. CONNECT EMERGENCY BALLAST TO THE UN-SWITCHED LEG OF CIRCUIT INDICATED.
6. CONNECT EXIT SIGN TO THE UN-SWITCHED LEG OF CIRCUIT INDICATED.
7. ALL OVER-HEAD WIRING SHALL BE IN RIGID CONDUIT WITH JUNCTION BOXES. WIRE WHIPS IN EMT SHALL BE PERMITTED.
8. SEAL LIGHTING FIXTURE AT CEILING TO MAINTAIN COOLER/FREEZER TEMPERATURE.

**LIGHTING FIXTURE SCHEDULE**  
ALL FLUORESCENT BALLAST'S SHALL BE OF THE ELECTRONIC, UNIVERSAL TYPE, MANUFACTURED BY ADVANCE OR EQUAL

QTY	DESIG	MANUFACTURER	CATALOG NUMBER	MTG	VOLT	LAMP		REMARKS
						QTY	DESCRIPTION	
5	A	LIGHTOLIER	G0S2G23LUNCA-85VI	R	120	2	32W T8 / 3500K	2'x4' TROFFER
2	AE	LIGHTOLIER	G0S2G23Z0CA-85VI-EM	R	120	2	32W T8 / 3500K	2'x4' TROFFER W/ BATTERY BALLAST
30	B	LIGHTOLIER	G0S2G27LUNCA-85Q	R	120	2	17W T8 / 3500K	2'x2' PARABOLIC
8	BE	LIGHTOLIER	G0S2G27Z0CA-85Q-EM	R	120	2	17W T8 / 3500K	2'x2' PARABOLIC W/ BATTERY BALLAST
45	C	SPECTRUM	SP2-F-18-EX / 5620-WS-GL	R	120	1	18W TT CFL / 3500K	DOWNLIGHT
2	D	LIGHTOLIER	F600-36W SATIN NICKEL GLOBE - ESTO MARTA AMBER	P	120	1	18W CFL / 3500K	PENDANT DOWNLIGHT WITH PLASTIC SHIELD
9	E	LIGHTOLIER	STAW254LUNPG	S	120	2	54W T5HO / 3500K	COOLER & FREEZER
4	F	LIGHTOLIER	4047L35U / 4041 / 404536	P	120	-	LED.	COOLER PENDANT
22	H	ANTHONY INTERNATIONAL	OPTIMAX2-72'	S	120	-	LED.	COOLER & FREEZER DOORS
2	J	COOPER	BC17WVBB10	W	120	1	17W	BATHROOM VANITY FIXTURE
1	K	LSI	XAW53-PT-LED-63-350-CW-UE	W	120	-	LED. (75 WATTS)	EXTERIOR WALL PACK
18	M	SPECTRUM	SGE4LED-25W-25K-E-AR624CFD-MW-GL	R	120	1	25 WATT LED.	EXTERIOR DOWNLIGHT
1	XI	LIGHTOLIER	LT-NUH-R-W	U	120	-	LED.	SELF CONTAINED EXIT SIGN
3	X2	LIGHTOLIER	LT-NUH-R-W-DC12	U	120	-	LED.	SELF CONTAINED EXIT SIGN W/ REMOTE CAPACITY
3	X3	LIGHTOLIER	ELA-B-T-GWP-L0304	W	12	-	INCLUDED	REMOTE HEAD
7	ES	LITHONIA	ELM618 6V18W	W	120	-	INCLUDED	EMERGENCY BATTERY UNIT

**MOUNTING KEY:**  
 P - PENDANT MOUNTED  
 R - RECESSED MOUNTED  
 S - SURFACE MOUNTED  
 U - UNIVERSAL MOUNTED  
 W - WALL MOUNTED

**NOTES:**  
 ALL LAMPS TO BE MANUFACTURED BY GENERAL ELECTRIC, PHILIPS OR SYLVANIA  
 EM - DENOTES FIXTURE TO BE PROVIDED WITH BATTERY BALLAST  
 NL - DENOTES FIXTURE TO BE WIRED TO 24-HR NIGHT-LIGHT CIRCUIT  
 \* PROVIDE WITH -20° COLD TEMPERATURE BALLAST

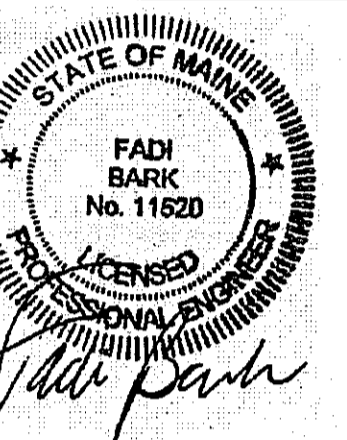


© AHARONIAN & ASSOCIATES INC 2012



**AHARONIAN & ASSOCIATES, INC.**  
 ARCHITECTS  
 310 George Washington Highway  
 Suite 100  
 Smithfield, Rhode Island  
 0 2 9 1 7  
 T 401-232-5010  
 F 401-232-5080  
 WWW.ARCH-ENG.COM

**DISCLAIMER**  
 OWNERSHIP AND USE OF DOCUMENTS, DRAWINGS AND SPECIFICATIONS ARE INSTRUMENTS OF PROFESSIONAL SERVICE AND SHALL REMAIN THE PROPERTY OF THE ARCHITECT. THESE DOCUMENTS ARE NOT TO BE USED, IN WHOLE OR IN PART, FOR ANY OTHER PROJECTS OR PURPOSES OR BY ANY OTHER PARTIES THAN THOSE PROPERLY AUTHORIZED BY CONTRACT WITHOUT THE EXPRESS WRITTEN AUTHORIZATION OF THE ARCHITECT.



**REVISIONS**

NUMBER	REMARKS	DATE



**VINCENT A. DIORIO, INC.**  
 CONSULTING ENGINEERS  
 89 Access Road Suite Eighteen  
 Norwood, Massachusetts 02062  
 tel: (781) 255-9754 fax: (781) 255-9725 email: vadjr@vadeng.com

**FOR CONSTRUCTION**

**PROJECT TITLE**  
**Cumberland FARMS**  
 100 Crossing Blvd, Framingham, Massachusetts  
 STORE # 5604  
 Vxxxx

801 WASHINGTON AVE  
 PORTLAND, ME  
 Cumberland County

**DRAWING TITLE**  
**ELECTRICAL LIGHTING PLAN**

<b>DATE</b> JULY 20, 2012	<b>PROJ NO</b> 11112
<b>DRAWN BY</b> DJH	<b>CHECKED BY</b> VAD JR
<b>DRAWING NUMBER</b> E1.01	