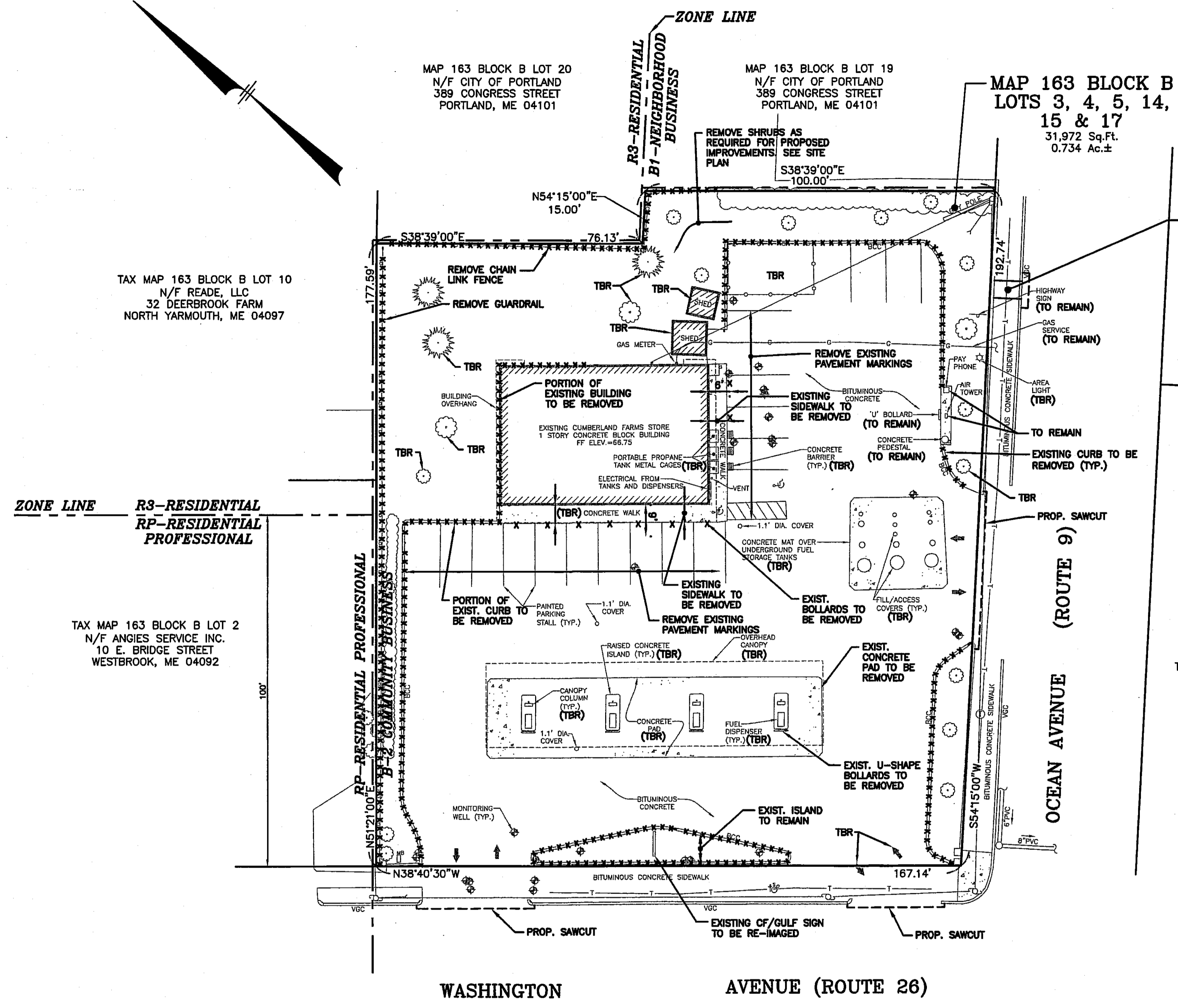


LOCATION MAP  
(NOT TO SCALE)



**NOTES:**

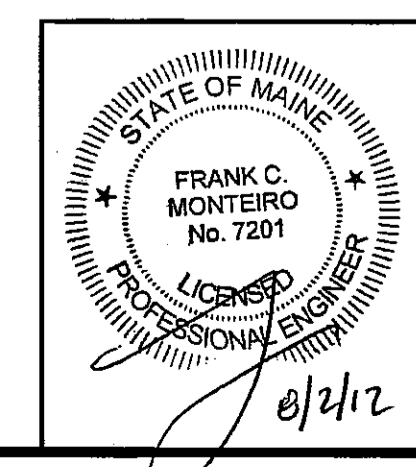
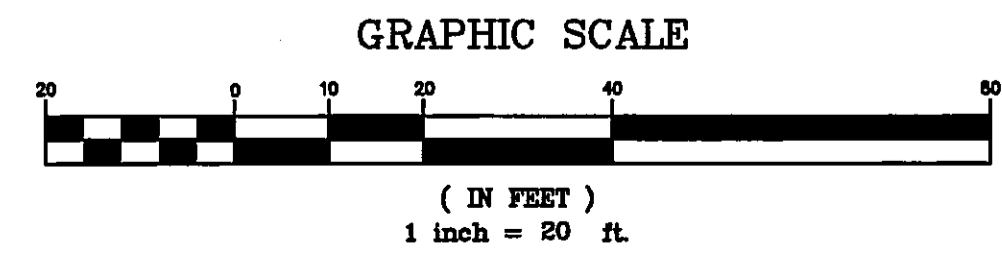
- EXISTING CONDITIONS AS SHOWN IS A COMPILATION OF ON THE GROUND SURVEY PREPARED BY MHF DESIGN CONSULTANTS, INC. AND INFORMATION TAKEN FROM PLAN REFERENCE #1.
- A DEMOLITION PERMIT MUST BE OBTAINED FROM THE CITY OF PORTLAND PRIOR TO COMMENCEMENT OF WORK. ANY APPLICABLE UTILITY DISCONNECTIONS MUST BE COORDINATED WITH RESPECTIVE UTILITY COMPANIES.
- ALL DEMOLITION ACTIVITIES ARE TO BE PERFORMED IN STRICT ADHERENCE TO ALL FEDERAL, STATE AND LOCAL REGULATIONS. CONTRACTOR TO INSTALL EROSION CONTROL DEVICES AS REQUIRED PRIOR TO BEGINNING DEMOLITION ACTIVITIES.
- CONDUCT ALL DEMOLITION OPERATIONS IN A MANNER THAT WILL PREVENT INJURY, DAMAGE TO STRUCTURES, ADJACENT BUILDINGS AND ALL PERSONS.
- REFRAIN FROM USING EXPLOSIVES WITHOUT PRIOR WRITTEN CONSENT OF THE DEVELOPER AND APPLICABLE GOVERNMENTAL AUTHORITIES.
- CONDUCT DEMOLITION SERVICES IN SUCH A MANNER TO INSURE MINIMUM INTERFERENCE WITH ROADS, STREETS, WALKS AND OTHER ADJACENT FACILITIES. DO NOT CLOSE OR OBSTRUCT STREETS, WALKS OR OTHER OCCUPIED FACILITIES WITHOUT PRIOR WRITTEN PERMISSION OF THE DEVELOPER AND APPLICABLE GOVERNMENTAL AUTHORITIES. PROVIDE ALTERNATIVE ROUTES AROUND CLOSED OR OBSTRUCTED TRAFFIC WAYS IF REQUIRED BY APPLICABLE GOVERNMENTAL REGULATIONS.
- USE WATERING, TEMPORARY ENCLOSURES AND OTHER SUITABLE METHODS, AS NECESSARY TO LIMIT THE AMOUNT OF DUST AND DIRT RISING AND SCATTERING IN THE AIR. CLEAN ADJACENT STRUCTURE AND IMPROVEMENTS OF ALL DUST AND DEBRIS CAUSED BY THE DEMOLITION OPERATIONS. RETURN ALL ADJACENT AREAS TO THE CONDITIONS EXISTING PRIOR TO THE START OF WORK.
- ACCOMPLISH AND PERFORM THE DEMOLITION IN SUCH A MANNER AS TO PREVENT THE UNAUTHORIZED ENTRY OF PERSONS AT ANY TIME.
- COMPLETELY FILL BELOW GRADE AREAS AND VOIDS RESULTING FROM THE DEMOLITION OF STRUCTURES AND FOUNDATIONS WITH SOIL MATERIALS CONSISTING OF STONE, GRAVEL AND SAND, FREE FROM DEBRIS, TRASH, FROZEN MATERIALS, ROOTS AND OTHER ORGANIC MATTER. STONES USED WILL NOT BE LARGER THAN 6 INCHES IN DIMENSION. MATERIAL FROM DEMOLITION MAY NOT BE USED AS FILL. PRIOR TO PLACEMENT OF FILL MATERIALS, UNDERTAKE ALL NECESSARY ACTION IN ORDER TO INSURE THAT AREAS TO BE FILLED ARE FREE OF STANDING WATER, FROZEN MATERIAL, TRASH, DEBRIS. PLACE FILL MATERIALS LAYERS NOT EXCEEDING 6 INCHES IN LOOSE DEPTH AND COMPACT EACH LAYER AT PLACEMENT TO 95% OPTIMUM DENSITY. GRADE SURFACE TO MEET ADJACENT CONTOURS AND TO PROVIDE SURFACE DRAINAGE.
- REMOVE FROM THE DESIGNATED SITE, AT THE EARLIEST POSSIBLE TIME, ALL DEBRIS RUBBISH, SALVAGEABLE ITEMS, HAZARDOUS AND COMBUSTIBLE SERVICES. REMOVED MATERIALS MAY NOT BE STORED, SOLD OR BURNED ON SITE. REMOVAL OF HAZARDOUS AND COMBUSTIBLE MATERIALS SHALL BE ACCOMPLISHED IN ACCORDANCE WITH THE PROCEDURES AS AUTHORIZED BY THE FIRE DEPARTMENT OR OTHER APPROPRIATE REGULATORY AGENCIES AND DEPARTMENTS.
- PROTECT EXISTING DRAINAGE SYSTEM(S) AS NECESSARY TO PREVENT SEDIMENT FROM ENTERING DURING CONSTRUCTION.
- THE LIMITS OF WORK SHALL BE CLEARLY MARKED IN THE FIELD PRIOR TO THE START OF CONSTRUCTION OR SITE CLEARING.
- IT SHALL BE THE CONTRACTORS RESPONSIBILITY TO NOTIFY "DIG SAFE" (1-888-344-7233) 72 HOURS PRIOR TO ANY EXCAVATION ON THIS SITE. CONTRACTOR SHALL ALSO NOTIFY LOCAL WATER DEPARTMENT TO MARK OUT THEIR UTILITIES.
- NOTES ON THIS PLAN THAT READ "TBR" REPRESENT FEATURES TO BE REMOVED. ANY FEATURES NOT LABELED "TBR" OR "TO BE REMOVED" SHALL BE CONSIDERED EXISTING TO REMAIN.
- ANY EXISTING IRRIGATION SYSTEM TO BE PROTECTED DURING DEMOLITION AND CONSTRUCTION. EXISTING IRRIGATION SYSTEM TO BE RELOCATED, EXTENDED AND CONNECTED TO ALL PROPOSED LANDSCAPE AREAS AS NECESSARY.

**PLAN REFERENCES:**

- EXISTING CONDITIONS PLAN OF CUMBERLAND FARMS STORE, PREPARED FOR V.S.H. REALTY, INC.; PREPARED BY MAINE SURVEY CONSULTANTS, INC.; SCALE: 1"=20'; DATE: APRIL 1999

**LEGEND**

○	IRON PIN FOUND/SET	⊕	UTILITY POLE
⊕	SIGN	⊕	SEWER MANHOLE
⊕	OBSERVATION WELL	⊕	TELEPHONE MANHOLE
⊕	TREE	⊕	WATER VALVE
		TBR	TO BE REMOVED



REVISIONS			31,972 SQUARE FEET
DATE	REV. BY	DESCRIPTION	0.734 ACRES
3/17/11	CMT	MISC. REVISIONS	V# 1079
9/6/11	CMT	REV.BLDG FOOTPRINT, MISC. REVS.	Store# 5604
3/29/12	CMT	ADDRESS CITY COMMENTS	Gas Station# 851839
6/15/12	CMT	ADDRESS CITY COMMENTS	
7/24/12	CMT	MISC. REVISIONS	

**MHF Design Consultants, Inc.**  
44 Siles Road, Suite One  
Salem, New Hampshire 03079  
(603) 893-0720  
ENGINEERS • PLANNERS • SURVEYORS  
www.mhfdesign.com

801 Washington Ave. & Ocean Ave.  
**PORTLAND, MAINE**

CUMBERLAND FARMS INC.  
100 CROSSING BLVD.  
FRAMINGHAM, MA 01702

**DEMOLITION PLAN**

SCALE: 1"= 20'  
DATE: OCTOBER 5, 2009  
FILE: 2666SP.dwg  
DRAWN BY: MHF  
CHECKED BY:

F:\Projects\CAD\2666SP.DWG DEMO 7/25/12 2:49pm tjh

