

LEGEND

—— CONSTRUCTION TO REMAIN

--- CONSTRUCTION TO BE REMOVED

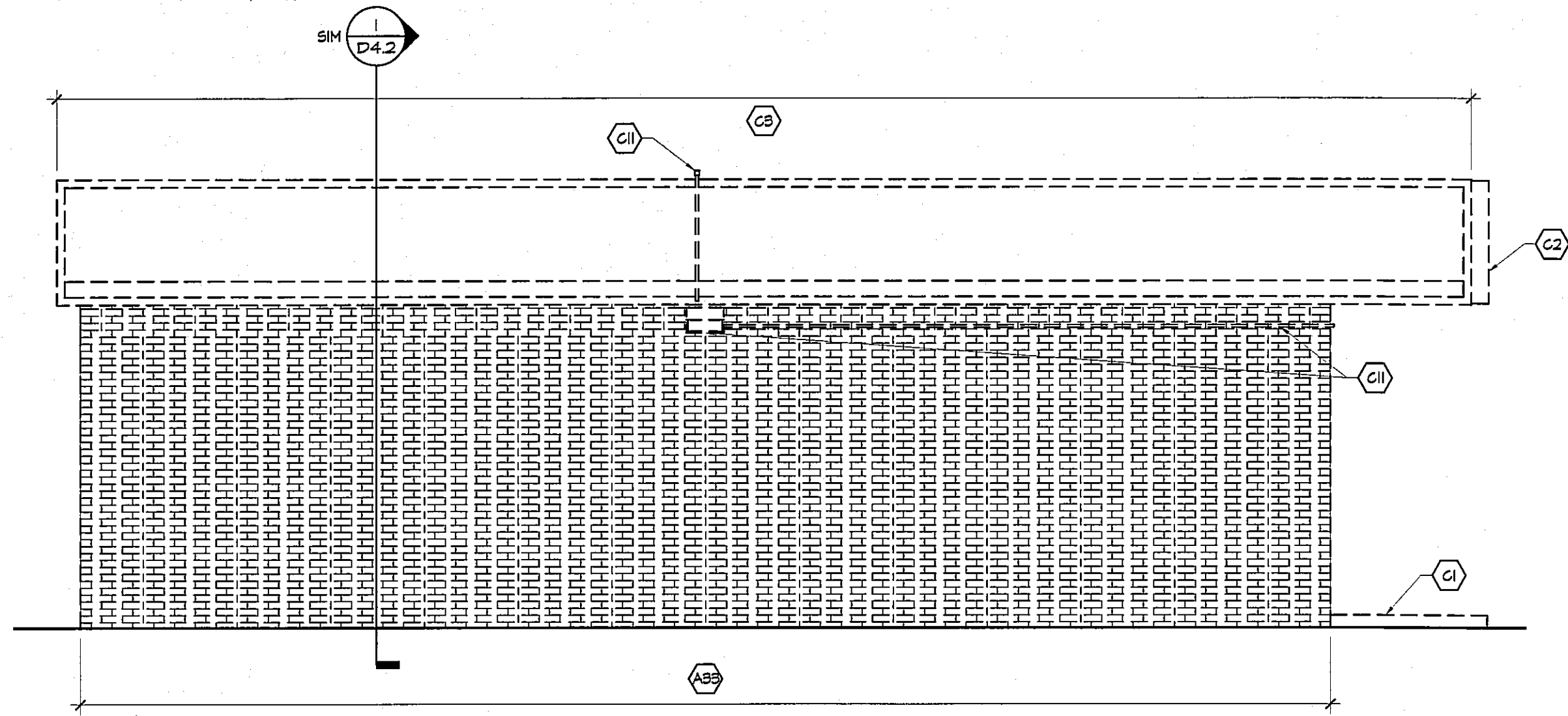
(X) INDICATES KEYED DEMOLITION NOTE

GENERAL NOTES

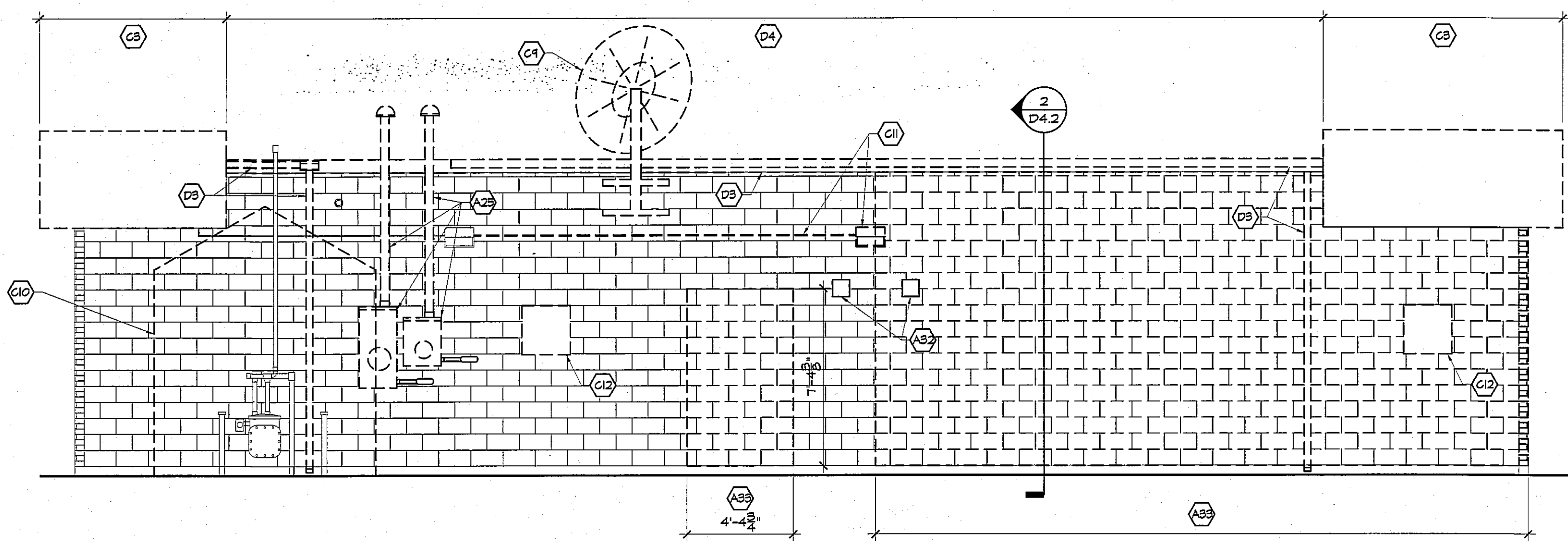
1) SEE SHEET D1.2 FOR GENERAL DEMOLITION NOTES.

KEYED DEMOLITION NOTES

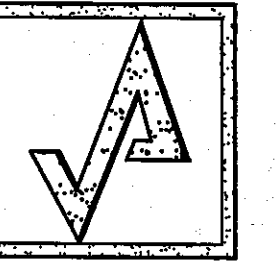
- A4) FLOOR DEMO NOTES**
- A1) REMOVE ALL INTERIOR WALL FINISHES, W/ FLOORING, MASONRY ATTACHMENTS DOWN TO ETR EXTERIOR CONSTRUCTION.
- A2) REMOVE INTERIOR STUD PARTITION WALL MOUNTED ACCESSORIES & ALL RELATED ATTACHMENTS.
- A3) REMOVE DOOR FRAME & ALL RELATED ACCESSORIES.
- A4) REMOVE FLOOR MILLWORK, KITCHENWALL, BASE CABINETS, MILLWORK, COUNTERTOPS, RELATED ACCESSORIES.
- A5) REMOVE WALK-IN COOLER DISPLAY DOOR UNITS & ACCESSORIES, ALL RELATED ATTACHMENTS.
- A6) REMOVE ENTIRE WALK-IN COOLER BOX CEILING PANELS, ACCESS PANELS, LIGHT FIXTURES, EVAP FAN UNITS, REFRIGERATION LINES & ALL RELATED ATTACHMENTS.
- A7) REMOVE PLUMBING FIXTURE & RELATED ATTACHMENTS, SALVAGE FOR RELOCATION IN NEW LAYOUT. (SEE PLUMB DWGS)
- A8) REMOVE WATER FILTRATION SYSTEM & RELATED ATTACHMENTS, SALVAGE FOR RELOCATION IN NEW LAYOUT. (SEE PLUMB DWGS)
- A9) REMOVE FLOOR MOUNTED WATER HEATER & RELATED ATTACHMENTS.
- A10) REMOVE WATER METER & RELATED ATTACHMENTS, SALVAGE FOR RELOCATION IN NEW LAYOUT. (SEE PLUMB DWGS)
- A11) REMOVE BASEBOARD HEATER & ALL RELATED ATTACHMENTS.
- A12) REMOVE ALL MILLWORK, BASE CABINETS, COUNTER & ALL RELATED ATTACHMENTS.
- A13) REMOVE MILLWORK, SHELVING & ALL RELATED ATTACHMENTS.
- A14) REMOVE QUARRY TILE FLOOR FINISH, VINYL WALL BASE & RELATED ATTACHMENTS.
- A15) REMOVE POWER POLE, ELEC WIRING & RELATED ATTACHMENTS, RETURN ONEAC TO OWNER.
- A16) REMOVE ONEAC, W/ SHELF & ALL RELATED ATTACHMENTS, RETURN ONEAC TO OWNER.
- A17) REMOVE W/ STUD ELEC PANEL ENCLOSURE, ACCESS COVERS & ALL RELATED ATTACHMENTS.
- A18) REMOVE VEEPER ROOT & RELATED ATTACHMENTS, SALVAGE FOR RELOCATION IN NEW LAYOUT. (SEE ELEC DWGS)
- A19) REMOVE FLOOR PANEL & RELATED ATTACHMENTS, SALVAGE FOR RELOCATION IN NEW LAYOUT.
- A20) REMOVE FIRE ALARM FULL STATION & RELATED ATTACHMENTS.
- A21) REMOVE EMERGENCY STOP BUTTON & RELATED ATTACHMENTS, SALVAGE FOR RELOCATION IN NEW LAYOUT. (SEE ELEC DWGS)
- A22) REMOVE FIRE SUPPRESSION BOTTLE & RELATED ATTACHMENTS.
- A23) SAWCUT & REMOVE FLOOR SLAB AS REQUIRED TO ACCOMMODATE NEW PLUMBING & ELECTRICAL.
- A24) REMOVE ENTIRE ALUMINUM STOREFRONT SYSTEM, 2X ATTACHMENTS, HEAD FRAMING & ALL RELATED ATTACHMENTS.
- A25) REMOVE ELEC METER, SERVICE DISCONNECT, ELEC MAST & ALL RELATED ATTACHMENTS.
- A26) SAWCUT & REMOVE PORTION OF EXTERIOR MASONRY WALL, CONSTRUCTION FOR RELATED ATTACHMENTS & LOCATION OF NEW STOREFRONT PROVIDE TEMPORARY SUPPORT FOR ETR STRUCTURE AS REQ'D (SEE STRUCT DWGS)
- A27) SAWCUT & REMOVE PORTION OF MASONRY KNEEWALL, CONSTRUCTION FOR RELATED ATTACHMENTS & LOCATION OF NEW STOREFRONT OPENING.
- A28) REMOVE STEEL COLUMN & RELATED ATTACHMENTS.
- A29) REMOVE STEEL BEAM & RELATED ATTACHMENTS, STRUCTURE.
- A30) REMOVE PORTION OF CONCRETE FOUNDATION WALL DOWN 6" BELOW FLOOR SLAB ELEVATION.
- A31) REMOVE ELEC PANELS, SERVICE DISCONNECT & ALL RELATED ATTACHMENTS.
- A32) REMOVE WALL CAP & RELATED ATTACHMENTS.
- A33) SAWCUT & REMOVE PORTION OF EXTERIOR MASONRY WALL, CONSTRUCTION FOR RELATED ATTACHMENTS.
- A34) SAWTOOTH REMOVE BRICK VENEER.
- A35) REMOVE PORTION OF CONCRETE FOUNDATION WALL DOWN TO ETR FOOTINGS.
- B4) CEILING DEMO NOTES**
- B1) REMOVE ENTIRE ACFT CEILING SYSTEM, CEILING MOUNTED ACCESSORIES, CCTV MONITORS, SURVEILLANCE CAMERAS, VALANCE LIGHTING, WOOD RELATED ATTACHMENTS, LIGHT FIXTURES & ALL RELATED ATTACHMENTS.
- B2) REMOVE ENTIRE ACFT CEILING SYSTEM, CEILING MOUNTED ACCESSORIES, LIGHT FIXTURES & ALL RELATED ATTACHMENTS.
- B3) REMOVE ALL CEILING MOUNTED SUPPLY RETURN DIFFUSERS, HVAC DUCTWORK & ALL RELATED ATTACHMENTS.
- B4) REMOVE EXTERIOR BUILDING SOFFIT PANELS, SOFFIT LIGHTING, LIGHT FIXTURES, ELEC WIRING & ALL RELATED ATTACHMENTS.
- C4) EXTERIOR DEMO NOTES**
- C1) REMOVE ENTIRE CONC SIDEWALK, HG. ACCESS RAMP & RELATED ATTACHMENTS.
- C2) REMOVE EXISTING OF ID SIGNAGE, MOUNTING HARDWARE & RELATED ATTACHMENTS.
- C3) REMOVE ENTIRE MTL FASCIA, STEEL FASCIA FRAMING, W/ BLOCKING, ALL RELATED ATTACHMENTS, ROOF STRUCTURE TO REMAIN.
- C4) REMOVE GAS TROUGH & ALL RELATED ATTACHMENTS. (SEE ELEC DWGS FOR NEW LOCATION)
- C5) REMOVE WALL MOUNTED TANK STICK & RELATED ATTACHMENTS, SALVAGE FOR REUSE.
- C6) REMOVE HM LOADING DOOR, FRAME & ALL RELATED ATTACHMENTS.
- C7) REMOVE VENT PIPE & RELATED ATTACHMENTS.
- C8) REMOVE ELEC CONDUIT, JUNCTION BOX & ALL RELATED ATTACHMENTS.
- C9) REMOVE WALL MOUNTED SATELLITE DISH & RELATED ATTACHMENTS FOR REUSE.
- C10) REMOVE WOOD STORAGE SHED & ALL RELATED ATTACHMENTS.
- C11) REMOVE WALL MOUNTED LIGHT FIXTURE, ELEC CONDUIT & RELATED ATTACHMENTS.
- C12) REMOVE WALK-IN COOLER ECONOMIZER & RELATED ATTACHMENTS.
- D4) ROOF DEMO NOTES**
- D1) REMOVE ROOF MOUNTED CDU, REFRIGERATION LINES, ELEC WIRING & ALL RELATED ATTACHMENTS.
- D2) REMOVE RTU, RTU CURB, GAS PIPING & ALL RELATED ATTACHMENTS BACK TO GAS RISER. (SALVAGE UNITS FOR RELOCATION IN NEW LAYOUT)
- D3) REMOVE ALUM GUTTER SYSTEM, DOWNSPOUTS & ALL RELATED ATTACHMENTS.
- D4) REMOVE MTL ROOF EDGE, FASCIA BOARD & ALL RELATED ATTACHMENTS.
- D5) REMOVE ENTIRE EPDM ROOF SYSTEM, MEMBRANE, RIGID INSULATION, W/ BLOCKING & ALL RELATED ATTACHMENTS DOWN TO ETR W/ DECK.
- D6) REMOVE EXHAUST FAN ROOF CAP & ALL RELATED ATTACHMENTS.
- D7) REMOVE VENT THRU ROOF & RELATED ATTACHMENTS.



2 WEST (SIDE) DEMOLITION ELEVATION
SCALE: 1/4" = 1'-0"



1 NORTH (REAR) DEMOLITION ELEVATION
SCALE: 1/4" = 1'-0"

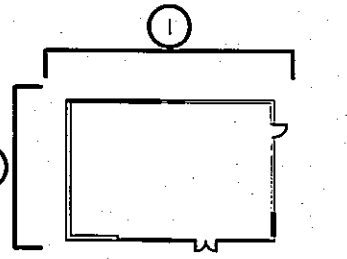


AHARONIAN & ASSOCIATES INC.
ARCHITECTS

310 George Washington Highway
Suite 100
Smithfield, Rhode Island
0 2 9 1 7
T 401-232-5010
F 401-232-5080
WWW.ARCH-ENG.COM

DISCLAIMER

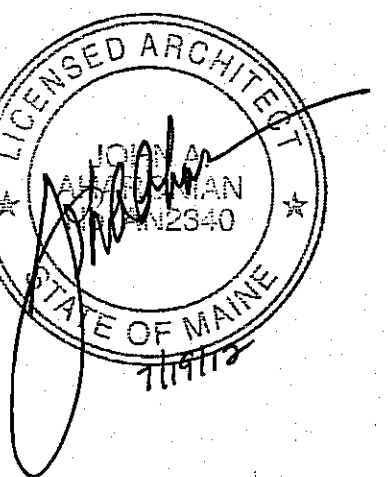
OWNERSHIP AND USE OF DOCUMENTS, DRAWINGS AND SPECIFICATIONS ARE INSTRUMENTS OF PROFESSIONAL SERVICE AND SHALL REMAIN THE PROPERTY OF THE ARCHITECT. THESE DOCUMENTS ARE NOT TO BE USED, IN WHOLE OR IN PART, FOR ANY OTHER PROJECTS OR PURPOSES OR BY ANY OTHER PARTIES THAN THOSE PROPERLY AUTHORIZED BY CONTRACT WITHOUT THE EXPRESS WRITTEN AUTHORIZATION OF THE ARCHITECT.



KEY PLAN

REVISIONS

NUMBER	REMARKS	DATE



FOR CONSTRUCTION

PROJECT TITLE

Cumberland FARMS
100 Crossing Blvd, Frammingham, Massachusetts
STORE # 5604
V1079

801 WASHINGTON AVE
PORTLAND, ME
Cumberland County

DRAWING TITLE

EXTERIOR DEMOLITION ELEVATIONS

DATE JULY 19, 2012	PROJ NO 11112
DRAWN BY JJ	CHECKED BY AZ

DRAWING NUMBER

D3.2