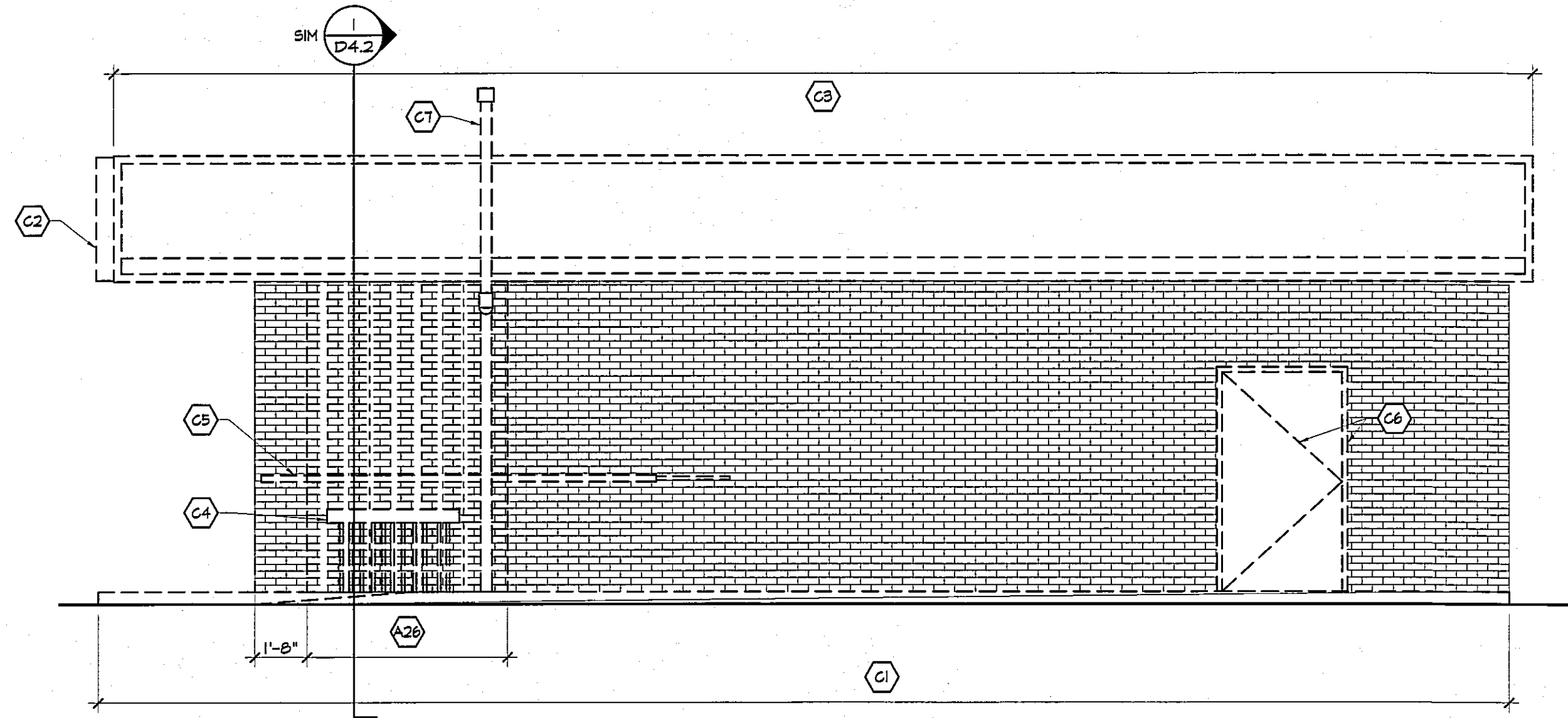


**LEGEND**  
 ——— CONSTRUCTION TO REMAIN  
 - - - - - CONSTRUCTION TO BE REMOVED  
 (X) INDICATES KEYED DEMOLITION NOTE

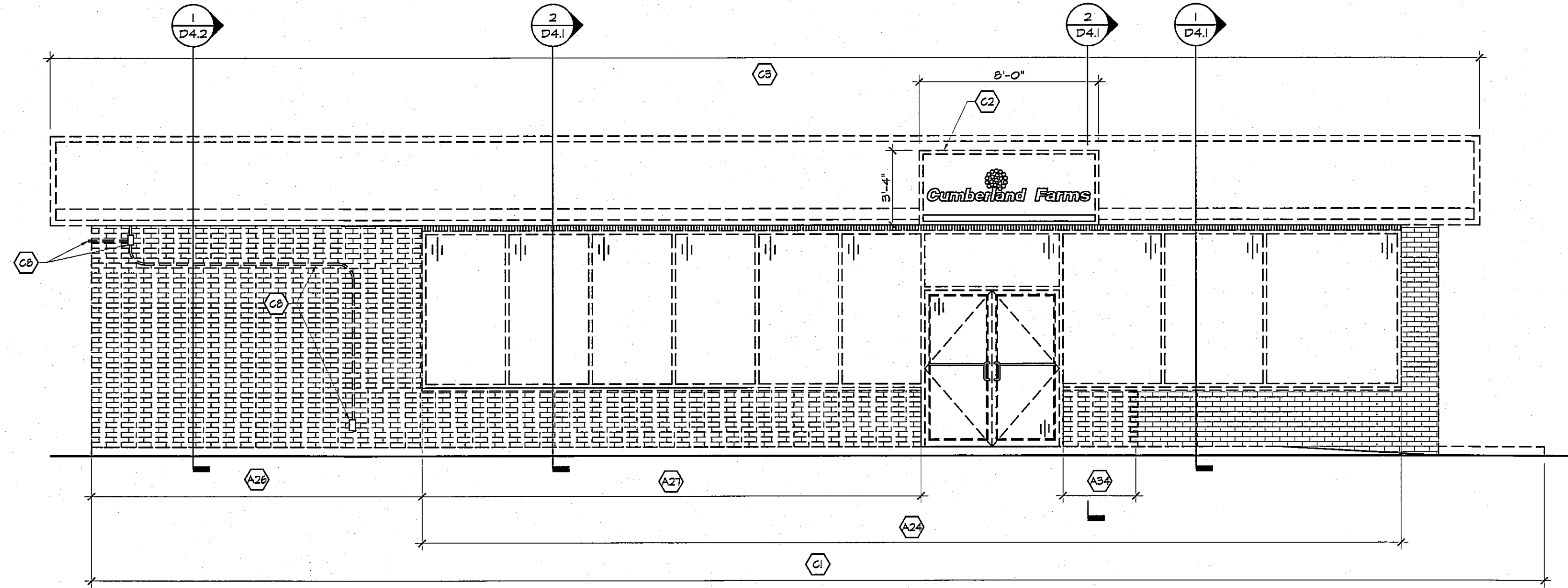
**GENERAL NOTES**  
 1) SEE SHEET D1.2 FOR GENERAL DEMOLITION NOTES.

**KEYED DEMOLITION NOTES**

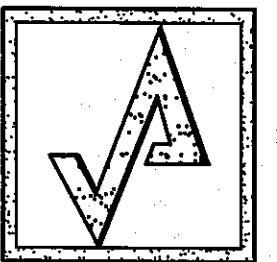
- (A) FLOOR DEMO NOTES**
- (A1) REMOVE ALL INTERIOR WALL FINISHES, MOULDING, FLOORING, PARTITIONS, MASONRY WALL CONSTRUCTION.
  - (A2) REMOVE INTERIOR STUD PARTITION WALL MOUNTED ACCESSORIES & ALL RELATED ATTACHMENTS.
  - (A3) REMOVE DOOR, FRAME & ALL RELATED ATTACHMENTS.
  - (A4) REMOVE POS MILLWORK, KNEEWALL, BASE ACCESSORIES, MILLWORK, COUNTERTOPS & RELATED ATTACHMENTS.
  - (A5) REMOVE WALK-IN COOLER DISPLAY DOOR UNITS & RELATED ATTACHMENTS.
  - (A6) REMOVE ENTIRE WALK-IN COOLER BOX, CEILING PANELS, COOLER DOOR, LIGHT FIXTURES, FAN UNITS, RIGID INSULATION, REFRIGERATION LINES & ALL RELATED ATTACHMENTS.
  - (A7) REMOVE PLUMBING FIXTURE & RELATED ACCESSORIES, OIL & GAS PIPING AS REQ'D TO ACCOMMODATE NEW LAYOUT.
  - (A8) REMOVE WATER FILTRATION SYSTEM & RELATED ATTACHMENTS. SALVAGE FOR RELOCATION IN NEW LAYOUT. (SEE PLUMB DWGS)
  - (A9) REMOVE FLOOR MOUNTED WATER HEATER & RELATED ATTACHMENTS.
  - (A10) REMOVE WATER METER & RELATED ATTACHMENTS. SALVAGE FOR RELOCATION IN NEW LAYOUT. (SEE PLUMB DWGS)
  - (A11) REMOVE BASEBOARD HEATER & ALL RELATED ATTACHMENTS.
  - (A12) REMOVE ALL MILLWORK, BASE CABINETS, COUNTER & ALL RELATED ATTACHMENTS.
  - (A13) REMOVE MD SHELVING & ALL RELATED ATTACHMENTS.
  - (A14) REMOVE QUARRY TILE FLOOR FINISH, VINYL WALL BASE & RELATED ATTACHMENTS.
  - (A15) REMOVE POWER POLE, ELEC WIRING & RELATED ATTACHMENTS. RETURN ONEAC TO OWNER.
  - (A16) REMOVE MD STUD ELEC PANEL ENCLOSURE, ACCESS COVER & ALL RELATED ATTACHMENTS.
  - (A17) REMOVE VENT FAN ROOF & RELATED ATTACHMENTS. ELEC DWGS.
  - (A18) REMOVE FLOOR PANELS & RELATED ATTACHMENTS.
  - (A19) REMOVE FIRE ALARM PULL STATION & RELATED ATTACHMENTS.
  - (A20) REMOVE EMERGENCY STOP BUTTON & RELATED ATTACHMENTS. SALVAGE FOR RELOCATION IN NEW LAYOUT. (SEE ELEC DWGS)
  - (A21) REMOVE FIRE SUPPRESSION BOTTLE & RELATED ATTACHMENTS.
  - (A22) SANK CUT & REMOVE FLOOR SLAB AS RELATED TO ACCOMMODATE NEW PLUMBING & ELECTRICAL.
  - (A23) REMOVE ENTIRE ALUMINUM STOREFRONT SYSTEM, 2X ATTACHMENTS, HEAD FRAMING & ALL RELATED ATTACHMENTS.
  - (A24) REMOVE ELEC METER, SERVICE DISCONNECT, ELEC MAST & ALL RELATED ATTACHMENTS.
  - (A25) SANK CUT & REMOVE PORTION OF EXTERIOR ATTACHMENTS & LOCATION OF NEW STOREFRONT. PROVIDE TEMPORARY SUPPORT FOR ETR STRUCTURE AS REQ'D (SEE STRUCT DWGS)
  - (A27) SANK CUT & REMOVE PORTION OF MASONRY GENERAL CONSTRUCTION & RELATED ATTACHMENTS & LOCATION OF NEW STOREFRONT OPENING.
  - (A28) REMOVE STEEL COLUMN & RELATED ATTACHMENTS.
  - (A29) REMOVE BEAM & RELATED ATTACHMENTS.
  - (A30) REMOVE PORTION OF CONCRETE FOUNDATION WALL DOWN 8" BELOW FLOOR SLAB ELEVATION.
  - (A31) REMOVE ELEC PANELS, SERVICE DISCONNECT & ALL RELATED ATTACHMENTS.
  - (A32) REMOVE WALL CAP & RELATED ATTACHMENTS.
  - (A33) SANK CUT & REMOVE PORTION OF EXTERIOR MASONRY WALL CONSTRUCTION & RELATED ATTACHMENTS.
  - (A34) SANK CUT & REMOVE BRICK VENEER.
  - (A35) REMOVE PORTION OF CONCRETE FOUNDATION WALL DOWN TO ETR FOOTING.
- (B) CEILING DEMO NOTES**
- (B1) REMOVE ENTIRE ACT CEILING SYSTEM, CEILING MOUNTED ACCESSORIES, SURVEILLANCE CAMERAS, VALANCE LIGHTING, MOOD LIGHTING, LIGHT FIXTURES & ALL RELATED ATTACHMENTS.
  - (B2) REMOVE ENTIRE ACT CEILING SYSTEM, CEILING MOUNTED ACCESSORIES, LIGHT FIXTURES & ALL RELATED ATTACHMENTS.
  - (B3) REMOVE ALL CEILING MOUNTED SUPPLY/RETURN DIFFUSERS, HVAC DUCTWORK & ALL RELATED ATTACHMENTS.
  - (B4) REMOVE EXTERIOR BUILDING SOFFIT PANELS, SOFFIT FRAMING, LIGHT FIXTURES, ELEC WIRING & ALL RELATED ATTACHMENTS.
- (C) EXTERIOR DEMO NOTES**
- (C1) REMOVE ENTIRE CONC SIDEWALK, H.C. ACCESS RAMP & RELATED ATTACHMENTS.
  - (C2) REMOVE EXTERIOR SIGNAGE MOUNTING HARDWARE & RELATED ATTACHMENTS.
  - (C3) REMOVE ENTIRE MTL FASCIA, STEEL FASCIA FRAMING, MOOD BLOCKING & ALL RELATED ATTACHMENTS. ROOF STRUCTURE TO REMAIN.
  - (C4) REMOVE GAS TROUGH & ALL RELATED ATTACHMENTS. (SEE ELEC DWGS FOR NEW LOCATION)
  - (C5) REMOVE WALL MOUNTED TANK STICK & RELATED ATTACHMENTS. SALVAGE FOR RELOCATION.
  - (C6) REMOVE HM LOADING DOOR, FRAME & ALL RELATED ATTACHMENTS.
  - (C7) REMOVE VENT PIPE & RELATED ATTACHMENTS.
  - (C8) REMOVE ELEC CONDUIT, JUNCTION BOX & ALL RELATED ATTACHMENTS.
  - (C9) REMOVE WALL MOUNTED SATELLITE DISH & RELATED ATTACHMENTS. SALVAGE FOR REUSE.
  - (C10) REMOVE WOOD STORAGE SHED & ALL RELATED ATTACHMENTS.
  - (C11) REMOVE WALL MOUNTED LIGHT FIXTURE, ELEC CONDUIT & RELATED ATTACHMENTS.
  - (C12) REMOVE WALK-IN COOLER ECONOMIZER & RELATED ATTACHMENTS.
- (D) ROOF DEMO NOTES**
- (D1) REMOVE ROOF MOUNTED CDU, REFRIGERATION LINES, ELEC WIRING & ALL RELATED ATTACHMENTS.
  - (D2) REMOVE RTU, RTU CURB, GAS PIPING & ALL RELATED ATTACHMENTS. BACK TO GAS RISER. (SALVAGE UNITS FOR RELOCATION IN NEW LAYOUT)
  - (D3) REMOVE ALUM GUTTER SYSTEM, DOWNSPOUTS & ALL RELATED ATTACHMENTS.
  - (D4) REMOVE MTL ROOF EDGE, FASCIA BOARD & ALL RELATED ATTACHMENTS.
  - (D5) REMOVE ENTIRE EPDM ROOF SYSTEM, MEMBRANE RIGID INSULATION, MD BLOCKING & ALL RELATED ATTACHMENTS. DOWN TO ETR MTL DECK.
  - (D6) REMOVE EXHAUST FAN ROOF CAP & ALL RELATED ATTACHMENTS.
  - (D7) REMOVE VENT THRU ROOF & RELATED ATTACHMENTS.



**2 EAST (SIDE) DEMOLITION ELEVATION**  
 SCALE: 1/4" = 1'-0"

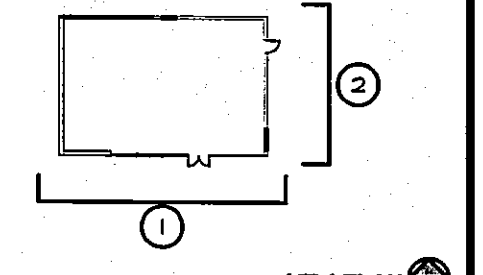


**1 SOUTH (FRONT) DEMOLITION ELEVATION**  
 SCALE: 1/4" = 1'-0"



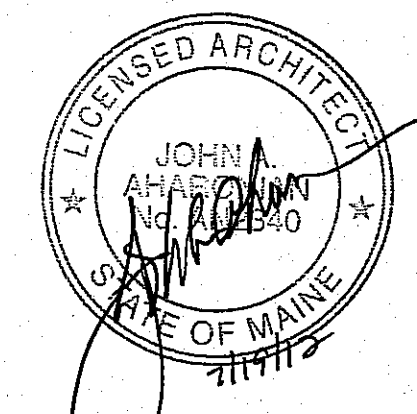
**AHARONIAN & ASSOCIATES INC.**  
 ARCHITECTS  
 310 George Washington Highway  
 Suite 100  
 Smithfield, Rhode Island  
 0 2 9 1 7  
 T 401-232-5010  
 F 401-232-5080  
 WWW.ARCH-ENG.COM

**DISCLAIMER**  
 OWNERSHIP AND USE OF DOCUMENTS, DRAWINGS AND SPECIFICATIONS ARE INSTRUMENTS OF PROFESSIONAL SERVICE AND SHALL REMAIN THE PROPERTY OF THE ARCHITECT. THESE DOCUMENTS ARE NOT TO BE USED, IN WHOLE OR IN PART, FOR ANY OTHER PROJECTS OR PURPOSES OR BY ANY OTHER PARTIES THAN THOSE PROPERLY AUTHORIZED BY CONTRACT WITHOUT THE EXPRESS WRITTEN AUTHORIZATION OF THE ARCHITECT.




**REVISIONS**

NUMBER	REMARKS	DATE



**FOR CONSTRUCTION**

**PROJECT TITLE**  
  
**Cumberland FARMS**  
 100 Crossing Blvd, Framingham, Massachusetts  
 STORE # 5604  
 V1079

**801 WASHINGTON AVE**  
**PORTLAND, ME**  
 Cumberland County

**DRAWING TITLE**  
**EXTERIOR DEMOLITION ELEVATIONS**

<b>DATE</b> JULY 19, 2012	<b>PROJ NO</b> 1112
<b>DRAWN BY</b> JJ	<b>CHECKED BY</b> AZ

**DRAWING NUMBER**  
**D3.1**