

© AHARONIAN & ASSOCIATES INC 2012

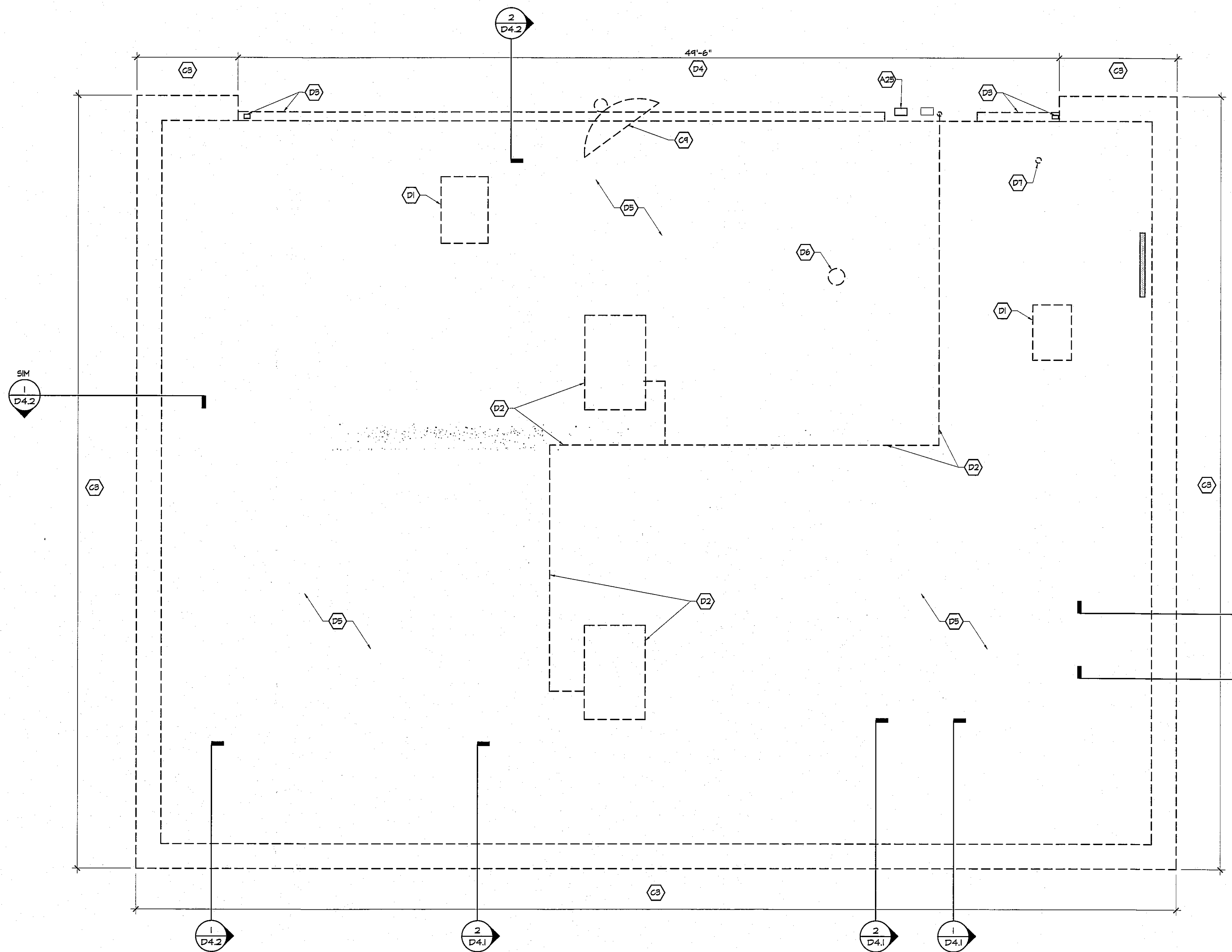
LEGEND

————	CONSTRUCTION TO REMAIN
-----	CONSTRUCTION TO BE REMOVED
⬡	INDICATES KEYED DEMOLITION NOTE
'ETR'	EXISTING TO REMAIN

GENERAL NOTES

1) SEE SHEET D1.2 FOR GENERAL DEMOLITION NOTES.

- KEYED DEMOLITION NOTES**
- FLOOR DEMO NOTES**
- A1 REMOVE ALL INTERIOR WALL FINISHES, WD FURRING, MASONRY WALL CONSTRUCTION DOWN TO ETR EXTERIOR MASONRY WALL CONSTRUCTION.
 - A2 REMOVE INTERIOR STUD PARTITION WALL MOUNTED ACCESSORIES & ALL RELATED ATTACHMENTS.
 - A3 REMOVE DOOR, FRAME & ALL RELATED ACCESSORIES.
 - A4 REMOVE POC MILLWORK, KNEEWALL, BASE CABINETS, SHELVING, COUNTERTOPS & RELATED ACCESSORIES.
 - A5 REMOVE WALK-IN COOLER DISPLAY DOOR UNITS & RELATED ATTACHMENTS.
 - A6 REMOVE ENTIRE WALK-IN COOLER BOX, CEILING PANELS, ACCESS DOOR, LIGHT FIXTURES, EVAP FAN PANELS & RELATED ACCESSORIES. SALVAGE FOR RELOCATION IN NEW LAYOUT. (SEE PLUMB DWGS)
 - A7 REMOVE PLUMBING FIXTURES & RELATED ATTACHMENTS. SALVAGE FOR RELOCATION TO ACCOMMODATE NEW LAYOUT.
 - A8 REMOVE WATER FILTRATION SYSTEM & RELATED ATTACHMENTS. SALVAGE FOR RELOCATION IN NEW LAYOUT. CUT & CAP PIPING AS REQ'D FOR USE IN NEW LAYOUT. (SEE PLUMB DWGS)
 - A9 REMOVE FLOOR MOUNTED WATER HEATER & RELATED ATTACHMENTS.
 - A10 REMOVE WATER METER & RELATED ATTACHMENTS. SALVAGE FOR RELOCATION IN NEW LAYOUT. (SEE PLUMB DWGS)
 - A11 REMOVE BASEBOARD HEATER & ALL RELATED ATTACHMENTS.
 - A12 REMOVE ALL MILLWORK, BASE CABINETS, COUNTER & ALL RELATED ATTACHMENTS.
 - A13 REMOVE SHELVING & ALL RELATED ATTACHMENTS.
 - A14 REMOVE QUARRY TILE FLOOR FINISH, VINYL WALL BASE & RELATED ATTACHMENTS.
 - A15 REMOVE POWER POLE, ELEC WIRING & RELATED ATTACHMENTS.
 - A16 REMOVE ONEAC, WD SHELF & ALL RELATED ATTACHMENTS. RETURN ONEAC TO OWNER.
 - A17 REMOVE WD STUD ELEC PANEL ENCLOSURE, ACCESS COVER & ALL RELATED ATTACHMENTS.
 - A18 REMOVE VEEPER ROOT & RELATED ATTACHMENTS. SALVAGE FOR RELOCATION IN NEW LAYOUT. (SEE ELEC DWGS)
 - A19 REMOVE ELEC PANEL & RELATED ATTACHMENTS. SALVAGE FOR RELOCATION IN NEW LAYOUT.
 - A20 REMOVE FIRE ALARM FULL STATION & RELATED ATTACHMENTS.
 - A21 REMOVE EMERGENCY STOP BUTTON & RELATED ATTACHMENTS. SALVAGE FOR RELOCATION IN NEW LAYOUT. (SEE ELEC DWGS)
 - A22 REMOVE FIRE SUPPRESSION BOTTLE & RELATED ATTACHMENTS.
 - A23 SAW CUT & REMOVE FLOOR SLAB AS REQUIRED TO ACCOMMODATE NEW PLUMBING & ELECTRICAL.
 - A24 REMOVE ENTIRE ALUMINUM STOREFRONT SYSTEM, 2X ATTACHMENTS, HEAD FRAMING & ALL RELATED ATTACHMENTS.
 - A25 REMOVE ELEC METER, SERVICE DISCONNECT, ELEC MAST & ALL RELATED ATTACHMENTS.
 - A26 SAW CUT & REMOVE PORTION OF EXTERIOR MASONRY WALL CONSTRUCTION. LOCATION OF NEW STOREFRONT ROOF FRAMING (SEE ALL NOTES) TO BE PROVIDED TEMPORARY SUPPORT FOR ETR STRUCTURE AS REQ'D (SEE STRUCT DWGS)
 - A27 SAW CUT & REMOVE PORTION OF EXTERIOR MASONRY WALL CONSTRUCTION. LOCATION OF NEW STOREFRONT OPENING.
 - A28 REMOVE STEEL COLUMN & RELATED ATTACHMENTS.
 - A29 REMOVE RUSTIC BEAM & RELATED ATTACHMENTS. PROVIDE TEMPORARY SUPPORT FOR STRUCTURE.
 - A30 REMOVE PORTION OF CONCRETE FOUNDATION WALL DOWN 8' BELOW FLOOR SLAB ELEVATION.
 - A31 REMOVE ELEC PANELS, SERVICE DISCONNECT & ALL RELATED ATTACHMENTS.
 - A32 REMOVE WALL CAP & RELATED ATTACHMENTS.
 - A33 SAW CUT & REMOVE PORTION OF EXTERIOR MASONRY WALL CONSTRUCTION & RELATED ATTACHMENTS.
 - A34 SAWTOOTH REMOVE BRICK VENEER.
 - A35 REMOVE PORTION OF CONCRETE FOUNDATION WALL DOWN TO ETR FOOTING.
- CEILING DEMO NOTES**
- B1 REMOVE ENTIRE AGT CEILING SYSTEM, CEILING MOUNTED ACCESSORIES, COOLING MONTHS, SURVEILLANCE CAMERAS, VALANCE LIGHTING, WOOD TRIM, LIGHT FIXTURES & ALL RELATED ATTACHMENTS.
 - B2 REMOVE ENTIRE AGT CEILING SYSTEM, CEILING MOUNTED ACCESSORIES, LIGHT FIXTURES & ALL RELATED ATTACHMENTS.
 - B3 REMOVE ALL CEILING MOUNTED SUPPLY RETURN DIFFUSERS, HVAC DUCTWORK & ALL RELATED ATTACHMENTS.
 - B4 REMOVE EXTERIOR BUILDING SOFFIT PANELS, SOFFIT FRAMING, LIGHT FIXTURES, ELEC WIRING & ALL RELATED ATTACHMENTS.
- EXTERIOR DEMO NOTES**
- C1 REMOVE ENTIRE CONC SIDEWALK, HG. ACCESS RAMP & RELATED ATTACHMENTS.
 - C2 REMOVE EXISTING CF ID SIGNAGE MOUNTING HARDWARE & RELATED ATTACHMENTS.
 - C3 REMOVE ENTIRE MTL FASCIA, STEEL FASCIA FRAMING, WOOD TRIM & ALL RELATED ATTACHMENTS. ROOF STRUCTURE TO REMAIN.
 - C4 REMOVE GAS TROUGH & ALL RELATED ATTACHMENTS. (SEE ELEC DWGS FOR NEW LOCATION)
 - C5 REMOVE WALK MOUNTED TANK STICK & RELATED ATTACHMENTS. SALVAGE FOR RELOCATION.
 - C6 REMOVE HM LOADING DOOR, FRAME & ALL RELATED ATTACHMENTS.
 - C7 REMOVE VENT PIPE & RELATED ATTACHMENTS.
 - C8 REMOVE ELEC CONDUIT, JUNCTION BOX & ALL RELATED ATTACHMENTS.
 - C9 REMOVE WALL MOUNTED SATELLITE DISH & RELATED ATTACHMENTS. SALVAGE FOR RELOCATION.
 - C10 REMOVE WOOD STORAGE SHED & ALL RELATED ATTACHMENTS.
 - C11 REMOVE WALL MOUNTED LIGHT FIXTURE, ELEC CONDUIT & RELATED ATTACHMENTS.
 - C12 REMOVE WALK-IN COOLER ECONOMIZER & RELATED ATTACHMENTS.
- ROOF DEMO NOTES**
- D1 REMOVE ROOF MOUNTED CDU REFRIGERATION LINES, ELEC WIRING & ALL RELATED ATTACHMENTS.
 - D2 REMOVE RTU, RTU CURB, GAS PIPING & ALL RELATED ATTACHMENTS BACK TO GAS RISER. (SALVAGE UNITS FOR RELOCATION IN NEW LAYOUT)
 - D3 REMOVE ALUM GUTTER SYSTEM, DOWNSPOUTS & ALL RELATED ATTACHMENTS.
 - D4 REMOVE MTL ROOF EDGE, FASCIA BOARD & ALL RELATED ATTACHMENTS.
 - D5 REMOVE ENTIRE EPDM ROOF SYSTEM, MEMBRANE, RIGID INSULATION, WD BLOCKING & ALL RELATED ATTACHMENTS DOWN TO ETR MTL DECK.
 - D6 REMOVE EXHAUST FAN ROOF CAP & ALL RELATED ATTACHMENTS.
 - D7 REMOVE VENT THRU ROOF & RELATED ATTACHMENTS.



1 DEMOLITION ROOF PLAN
SCALE: 1/4" = 1'-0"
PLAN



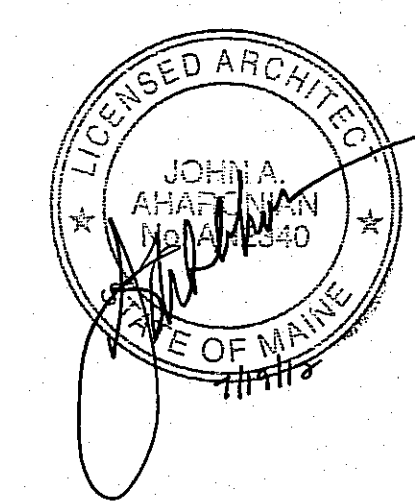
AHARONIAN & ASSOCIATES INC.
ARCHITECTS
310 George Washington Highway
Suite 100
Smithfield, Rhode Island
0 2 9 1 7
T 401-232-5010
F 401-232-5080
WWW.ARCH-ENG.COM

DISCLAIMER

OWNERSHIP AND USE OF DOCUMENTS, DRAWINGS AND SPECIFICATIONS ARE INSTRUMENTS OF PROFESSIONAL SERVICE AND SHALL REMAIN THE PROPERTY OF THE ARCHITECT. THESE DOCUMENTS ARE NOT TO BE USED, IN WHOLE OR IN PART, FOR ANY OTHER PROJECTS OR PURPOSES OR BY ANY OTHER PARTIES THAN THOSE PROPERLY AUTHORIZED BY CONTRACT WITHOUT THE EXPRESS WRITTEN AUTHORIZATION OF THE ARCHITECT.

REVISIONS

NUMBER	REMARKS	DATE



FOR CONSTRUCTION

PROJECT TITLE

Cumberland FARMS
100 Crossing Blvd, Framingham, Massachusetts
STORE # 5604
V1079

801 WASHINGTON AVE
PORTLAND, ME
Cumberland County

DRAWING TITLE

DEMOLITION ROOF PLAN

DATE	PROJ NO
JULY 19, 2012	11112
DRAWN BY	CHECKED BY
JJ	AZ

DRAWING NUMBER

D1.3