

**GENERAL DEMOLITION NOTES**

**01 - PROTECTION**

- ALL RULES AND REGULATIONS GOVERNING THE RESPECTIVE UTILITIES SHALL BE OBSERVED IN EXECUTING ALL DEMOLITION WORK. ALL WORK SHALL BE EXECUTED IN SUCH A MANNER AS TO PREVENT ANY DAMAGE TO THE EXISTING BUILDING, SERVICE UTILITY LINES AND STRUCTURES.
- THE CONTRACTOR SHALL ASSUME FULL RESPONSIBILITY FOR DAMAGES TO THE EXISTING BUILDING, AS WELL AS ADJOINING PRIVATE SPACES AND PROPERTY CAUSED BY HIS SUBCONTRACTOR'S EQUIPMENT AND PERSONNEL.
- PERFORM THE WORK IN SUCH A MANNER AS TO CAUSE NO INTERFERENCE WITH ACCESS BY THIS SUBCONTRACTOR OR OTHER CONTRACTORS TO ALL PORTIONS OF THE BUILDING AS NECESSARY FOR THE NORMAL CONDUCT OF THEIR WORK.
- THE CONTRACTOR SHALL NOT COMMENCE WORK UNTIL ITEMS SCHEDULED TO REMAIN HAVE BEEN ADEQUATELY PROTECTED. TAKE ALL POSSIBLE PRECAUTIONS TO AVOID DAMAGING THOSE ITEMS WHICH HAVE BEEN SPECIFIED BY THE OWNER TO BE STORED FOR REUSE.

**02 - CLEAN UP**

- PROMPTLY REMOVE ANY DEMOLITION DEBRIS OR SIMILAR MATERIAL, KEEPING THE AREA CLEAN AT ALL TIMES.

**03 - PREPARATION**

- NOTIFY ALL CORPORATIONS, COMPANIES, INDIVIDUALS OR LOCAL AUTHORITIES OWNING OR HAVING JURISDICTION OVER UTILITIES RUNNING TO, THROUGH OR ACROSS AREAS TO BE DISTURBED BY DEMOLITION OPERATIONS.
- HAVE ALL UTILITY SERVICES NOT OTHERWISE DESIGNATED TO BE DISCONNECTED BY THE CONTRACTOR, DISCONNECTED AT SERVICE MAINS BY THE GOVERNING UTILITY INVOLVED UNLESS OTHERWISE SHOWN ON THE DRAWINGS OR DIRECTED BY THE ARCHITECT.

**04 - SHORING**

- IT IS THE CONTRACTOR'S RESPONSIBILITY TO SHORE, BRACE, OR OTHERWISE SUPPORT THE STRUCTURE AS REQUIRED TO MAINTAIN STRUCTURAL INTEGRITY AT ALL TIMES. SHORING DESIGN SHALL BE PROVIDED BY THE GENERAL CONTRACTOR.
- HEADERS SHALL BE PLACED ACROSS THE TOP OF SHORING POSTS AND SHALL BE TIGHT AGAINST UNDERSIDE OF THE STRUCTURE ABOVE.
- SHORING SHALL BEAR ON SLEEPERS TO PREVENT DAMAGE TO STRUCTURE BELOW.
- TEMPORARY SHORING SHALL BE ERECTED, SUPPORTED, BRACED AND MAINTAINED BY THE CONTRACTOR TO SAFELY SUPPORT ALL DEAD LOADS PRESENTLY CARRIED BY THE BUILDING STRUCTURE AS WELL AS ANY CONSTRUCTION LIVE LOADS.
- SHORING SHALL BE RELEASED GRADUALLY.

**05 - DEMOLITION**

- DEMOLISH DESIGNATED EXISTING FEATURES ABOVE & BELOW FLOOR LEVELS & AS NOTED TO PREPARE THE BUILDING FOR ALL OTHER WORK AS SPECIFIED OR AS SHOWN ON THE DRAWINGS AND AS ORDERED BY THE ARCHITECT.
- COMPLY WITH ALL STATE & LOCAL DEPARTMENT OF HEALTH STANDARDS DURING DEMOLITION OPERATIONS.
- REMOVE AND SALVAGE MATERIAL REQUIRED FOR LATER REUSE AS SHOWN ON THE DRAWINGS AND AS DIRECTED BY THE ARCHITECT.
- REMOVE AND DISPOSE OF ALL UNSUITABLE MATERIAL OFF SITE. THE OWNER SHALL HAVE RIGHT OF FIRST REFUSAL FOR ALL MATERIALS. REMOVE ANY STORED MATERIAL DEEMED SURPLUS BY THE ARCHITECT AT NO ADDITIONAL COST TO THE OWNER.

**06 - DISPOSAL AND CLEAN UP**

- DEMOLISHED MATERIAL
  - ALL DEMOLISHED MATERIAL DECLARED UNSUITABLE BY THE ARCHITECT SHALL BECOME THE PROPERTY OF THE CONTRACTOR AND SHALL BE LEGALLY DISPOSED OF, OFF THE PREMISES, UNLESS OTHERWISE INDICATED OR SPECIFIED.
  - KEEP ALL EXITS, PUBLIC WAYS AND EGRESS PASSAGEWAYS CLEAR OF ALL DEBRIS AT ALL TIMES.
  - LEAVE THE PREMISES IN A SAFE, CLEAN AND RELATIVELY ORDERLY CONDITION UPON COMPLETION OF WORK.
  - PROVIDE DUST CONTROL MEASURES AS NECESSARY TO PREVENT SPREADING DUST AND TO SUIT THE CONDITIONS OF THE PROJECT.

**LEGEND**

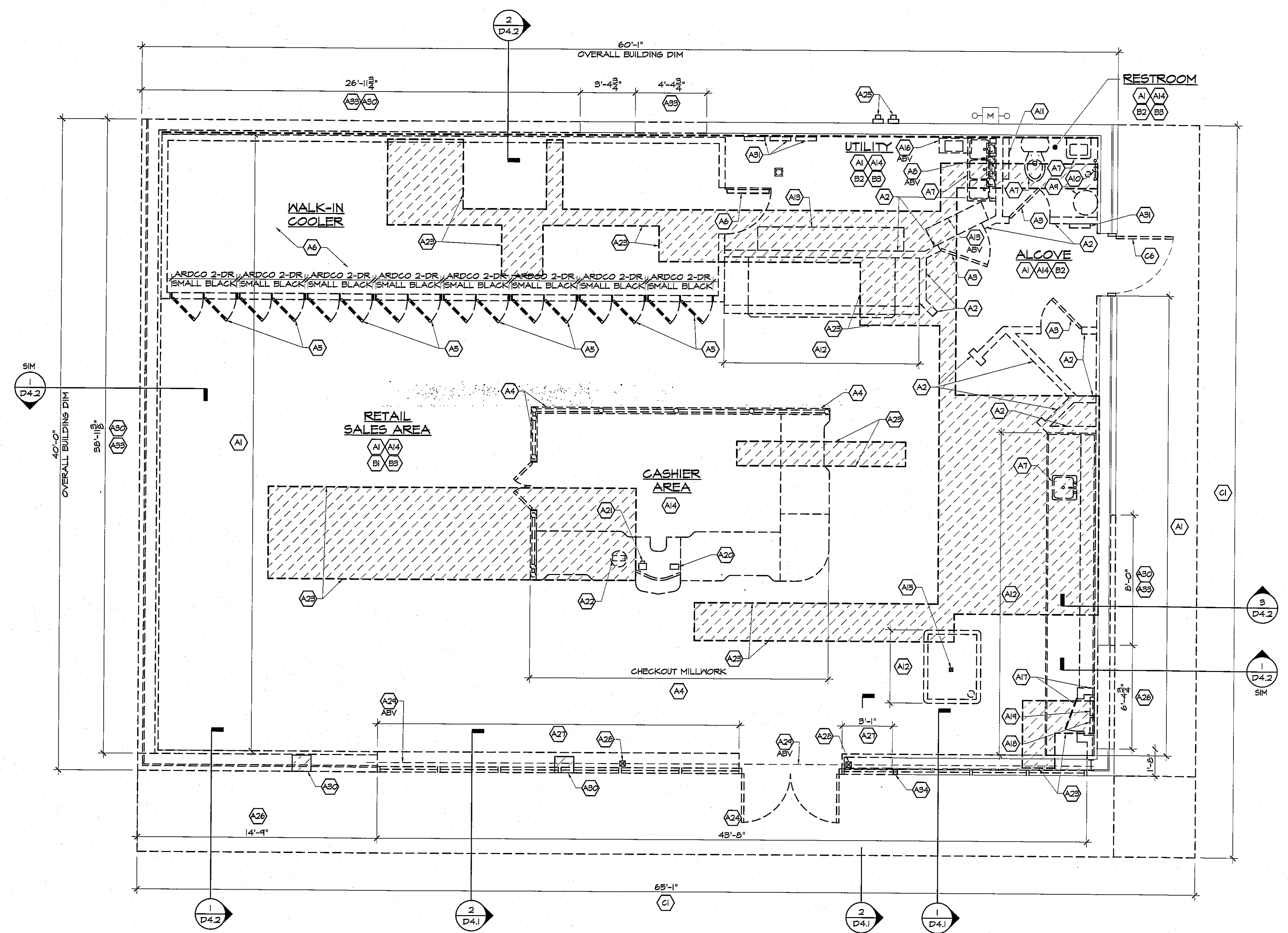
- CONSTRUCTION TO REMAIN
- ==== CONSTRUCTION TO BE REMOVED
- ⊕ INDICATES KEYED DEMOLITION NOTE
- ETR EXISTING TO REMAIN
- ▨ FLOOR TRENCHING

**NOTE**

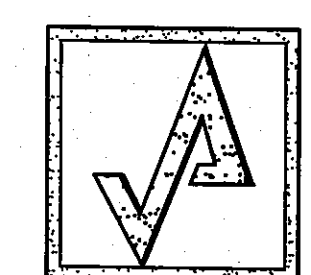
- CONTRACTOR TO PROVIDE STRUCTURAL SHORING PLAN FOR REVIEW BY ARCHITECT & STRUCTURAL ENGINEER OF RECORD PRIOR TO STARTING WORK IN AFFECTED AREA.
- CONTRACTOR TO PROVIDE ADD'L TO REMOVE ENTIRE FLOOR SLAB.

**KEYED DEMOLITION NOTES**

- FLOOR DEMO NOTES**
- A1 REMOVE ALL INTERIOR WALL FINISHES, KD FURRING, MASONRY, WALK-IN COOLER, DOWN TO ETR EXTERIOR ACCESSORIES & ALL RELATED ATTACHMENTS.
  - A2 REMOVE INTERIOR STUD PARTITION WALL MOUNTED ACCESSORIES & ALL RELATED ATTACHMENTS.
  - A3 REMOVE ROOF FRAME & ALL RELATED ATTACHMENTS.
  - A4 REMOVE P25 MILLWORK, KNEEWALL, BASE CABINETS, SHELVING, COUNTERTOPS & RELATED ATTACHMENTS.
  - A5 REMOVE WALK-IN COOLER DISPLAY DOOR UNITS & RELATED ATTACHMENTS.
  - A6 REMOVE ENTIRE WALK-IN COOLER BOX, CEILING UNITS, ELEC WIRING, REFRIGERATION LINES & ALL RELATED ATTACHMENTS.
  - A7 REMOVE PLUMBING FIXTURES & RELATED ATTACHMENTS. SALVAGE FOR RELOCATION IN NEW LAYOUT.
  - A8 REMOVE WATER FILTRATION SYSTEM & RELATED ATTACHMENTS. SALVAGE FOR RELOCATION IN NEW LAYOUT. (SEE ELEC DWGS)
  - A9 REMOVE FLOOR MOUNTED WATER HEATER & RELATED ATTACHMENTS.
  - A10 REMOVE WATER METER & RELATED ATTACHMENTS. SALVAGE FOR RELOCATION IN NEW LAYOUT. (SEE PLUMB DWGS)
  - A11 REMOVE BASEBOARD HEATER & ALL RELATED ATTACHMENTS.
  - A12 REMOVE ALL MILLWORK, BASE CABINETS, COUNTER & ALL RELATED ATTACHMENTS.
  - A13 REMOVE KD SHELVING & ALL RELATED ATTACHMENTS.
  - A14 REMOVE QUARRY TILE FLOOR FINISH, VINYL WALL BASE & RELATED ATTACHMENTS.
  - A15 REMOVE POWER POLE, ELEC WIRING & RELATED ATTACHMENTS.
  - A16 REMOVE ONEAC KD SHELF & ALL RELATED ATTACHMENTS. RETURN ONEAC TO OWNER.
  - A17 REMOVE MTL STUD EDGE PANEL ENCLOSURE, ACCESS PANELS & RELATED ATTACHMENTS.
  - A18 REMOVE VEEDEER ROOF & RELATED ATTACHMENTS. SALVAGE FOR RELOCATION IN NEW LAYOUT. (SEE ELEC DWGS)
  - A19 REMOVE ELEC PANEL & RELATED ATTACHMENTS. SALVAGE FOR RELOCATION IN NEW LAYOUT.
  - A20 REMOVE FIRE ALARM PULL STATION & RELATED ATTACHMENTS.
  - A21 REMOVE EMERGENCY STOP BUTTON & RELATED ATTACHMENTS. SALVAGE FOR RELOCATION IN NEW LAYOUT. (SEE ELEC DWGS)
  - A22 REMOVE FIRE SUPPRESSION BOTTLE & RELATED ATTACHMENTS.
  - A23 SAWCUT & REMOVE FLOOR SLAB AS REQUIRED TO ACCOMMODATE NEW PLUMBING & ELECTRICAL.
  - A24 REMOVE ENTIRE ALUMINUM STOREFRONT SYSTEM, 2X ATTACHMENTS, HEAD FRAMING & ALL RELATED ATTACHMENTS.
  - A25 REMOVE ELEC METER SERVICE DISCONNECT, ELEC ATTACHMENTS.
  - A26 SAW CUT & REMOVE PORTION OF EXTERIOR ATTACHMENTS. LOCATION OF NEW STOREFRONT BUSH OPENING (SEE ALPHABETIC LAYOUT) GO TO STRUCTURE AS REQ'D (SEE STRUCT DWGS)
  - A27 SAWCUT & REMOVE PORTION OF MASONRY KNEEWALL CONSTRUCTION & RELATED ATTACHMENTS @ LOCATION OF NEW STOREFRONT OPENING.
  - A28 REMOVE STEEL COLUMN & RELATED ATTACHMENTS.
  - A29 REMOVE STEEL BEAM & RELATED ATTACHMENTS. GO TO PROVIDE TEMPORARY SUPPORT FOR STRUCTURE.
  - A30 REMOVE PORTION OF CONCRETE FOUNDATION WALL DOWN 5' BELOW FLOOR SLAB ELEVATION & ALL RELATED ATTACHMENTS.
  - A31 REMOVE ELEC PANELS, SERVICE DISCONNECT & ALL RELATED ATTACHMENTS.
  - A32 REMOVE WALL CAP & RELATED ATTACHMENTS.
  - A33 SAWCUT & REMOVE PORTION OF EXTERIOR MASONRY WALL CONSTRUCTION & RELATED ATTACHMENTS.
  - A34 SAWTOOTH REMOVE BRICK VENEER.
  - A35 REMOVE PORTION OF CONCRETE FOUNDATION WALL DOWN TO ETR FOOTING.
- CEILING DEMO NOTES**
- B1 REMOVE ENTIRE ACT CEILING SYSTEM, CEILING SURVEILLANCE CAMERAS, VALANCE LIGHTING, WOOD RELATED ATTACHMENTS.
  - B2 REMOVE ENTIRE ACT CEILING SYSTEM, CEILING RELATED ATTACHMENTS, LIGHT FIXTURES & ALL RELATED ATTACHMENTS.
  - B3 REMOVE ALL CEILING MOUNTED SUPPLY/RETURN DIFFUSERS, HVAC DUCTWORK & ALL RELATED ATTACHMENTS.
  - B4 REMOVE EXTERIOR BUILDING SOFFIT FANS & SOFFIT FRAMING, LIGHT FIXTURES, ELEC WIRING & ALL RELATED ATTACHMENTS.
- EXTERIOR DEMO NOTES**
- C1 REMOVE ENTIRE CONC SIDEWALK, H.C. ACCESS RAMP & RELATED ATTACHMENTS.
  - C2 REMOVE EXISTING ID SIGNAGE MOUNTING HARDWARE & RELATED ATTACHMENTS.
  - C3 REMOVE ENTIRE MTL FASCIA BOARD, STEEL FASCIA FRAMING, MOOD BLOCKING & STEEL RELATED ATTACHMENTS. ROOF STRUCTURE TO REMAIN.
  - C4 REMOVE GAS TROUGH & ALL RELATED ATTACHMENTS. (SEE ELEC DWGS FOR NEW LOCATION)
  - C5 REMOVE WALL MOUNTED TANK STICK & RELATED ATTACHMENTS. SALVAGE FOR RELOCATION.
  - C6 REMOVE HM LOADING DOOR, FRAME & ALL RELATED ATTACHMENTS.
  - C7 REMOVE VENT PIPE & RELATED ATTACHMENTS.
  - C8 REMOVE ELEC CONDUIT, JUNCTION BOX & ALL RELATED ATTACHMENTS.
  - C9 REMOVE WALL MOUNTED SATO LITE DISH & RELATED ATTACHMENTS. SALVAGE FOR REUSE.
  - C10 REMOVE WOOD STORAGE SHED & ALL RELATED ATTACHMENTS.
  - C11 REMOVE WALL MOUNTED LIGHT FIXTURE, ELEC CONDUIT & RELATED ATTACHMENTS.
  - C12 REMOVE WALK-IN COOLER ECONOMIZER & RELATED ATTACHMENTS.
- ROOF DEMO NOTES**
- D1 REMOVE ROOF MOUNTED COU REFRIGERATION LINES, ELEC WIRING & ALL RELATED ATTACHMENTS.
  - D2 REMOVE RTU, RTU CURB, GAS PIPING & ALL RELATED ATTACHMENTS BACK TO GAS RISER. (SALVAGE UNITS FOR RELOCATION IN NEW LAYOUT)
  - D3 REMOVE ALUM SUTTER SYSTEM, DOWNSPOUTS & ALL RELATED ATTACHMENTS.
  - D4 REMOVE MTL ROOF EDGE FASCIA BOARD & ALL RELATED ATTACHMENTS.
  - D5 REMOVE ENTIRE EPDM ROOF SYSTEM, MEMBRANE ATTACHMENTS, W/NO BLOCKING & RELATED ATTACHMENTS DOWN TO ETR MTL DECK.
  - D6 REMOVE EXHAUST FAN ROOF CAP & ALL RELATED ATTACHMENTS.
  - D7 REMOVE VENT THRU ROOF & RELATED ATTACHMENTS.



**1 DEMOLITION PLAN**  
SCALE: 1/4" = 1'-0"  
PLAN

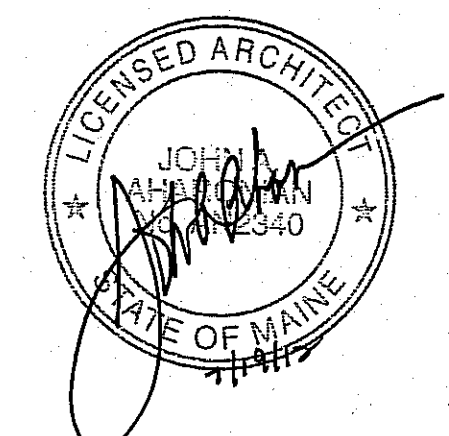


**AHARONIAN & ASSOCIATES INC. ARCHITECTS**  
310 George Washington Highway  
Suite 100  
Smithfield, Rhode Island  
0 2 9 1 7  
T 401-232-5010  
F 401-232-5080  
WWW.ARCH-ENG.COM

**DISCLAIMER**  
OWNERSHIP AND USE OF DOCUMENTS, DRAWINGS AND SPECIFICATIONS ARE INSTRUMENTS OF PROFESSIONAL SERVICE AND SHALL REMAIN THE PROPERTY OF THE ARCHITECT. THESE DOCUMENTS ARE NOT TO BE USED, IN WHOLE OR IN PART, FOR ANY OTHER PROJECTS OR PURPOSES OR BY ANY OTHER PARTIES THAN THOSE PROPERLY AUTHORIZED BY CONTRACT WITHOUT THE EXPRESS WRITTEN AUTHORIZATION OF THE ARCHITECT.

**REVISIONS**

NUMBER	REMARKS	DATE



**FOR CONSTRUCTION**

**PROJECT TITLE**  
**Cumberland FARMS**  
100 Crossing Blvd, Framingham, Massachusetts  
STORE # 5604  
V1079

**801 WASHINGTON AVE**  
**PORTLAND, ME**  
Cumberland County

**DRAWING TITLE**  
**DEMOLITION PLAN**

DATE	PROJ NO
JULY 19, 2012	11112
DRAWN BY	CHECKED BY
JJ	AZ

**DRAWING NUMBER**  
**D1.2**