



**AHARONIAN  
& ASSOCIATES INC.  
ARCHITECTS**

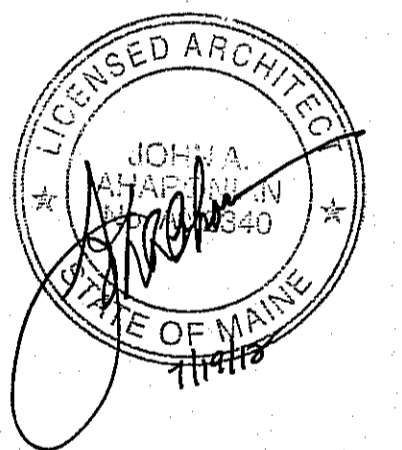
310 George Washington Highway  
Suite 100  
Smithfield, Rhode Island  
0 2 9 1 7  
T 401-232-5010  
F 401-232-5080  
WWW.ARCH-ENG.COM

**DISCLAIMER**

OWNERSHIP AND USE OF DOCUMENTS, DRAWINGS AND SPECIFICATIONS ARE INSTRUMENTS OF PROFESSIONAL SERVICE AND SHALL REMAIN THE PROPERTY OF THE ARCHITECT. THESE DOCUMENTS ARE NOT TO BE USED, IN WHOLE OR IN PART, FOR ANY OTHER PROJECTS OR PURPOSES OR BY ANY OTHER PARTIES THAN THOSE PROPERLY AUTHORIZED BY CONTRACT WITHOUT THE EXPRESS WRITTEN AUTHORIZATION OF THE ARCHITECT.

**REVISIONS**

NUMBER	REMARKS	DATE



**FOR CONSTRUCTION**

**PROJECT TITLE**  
  
**Cumberland  
FARMS**  
 100 Crossing Blvd, Framingham, Massachusetts  
 STORE # 5604  
 V1079

**801 WASHINGTON AVE  
PORTLAND, ME  
Cumberland County**

**DRAWING TITLE**  
**INTERIOR ELEVATIONS**

DATE JULY 19, 2012	PROJ NO 11112
DRAWN BY JL	CHECKED BY AZ

**DRAWING NUMBER**

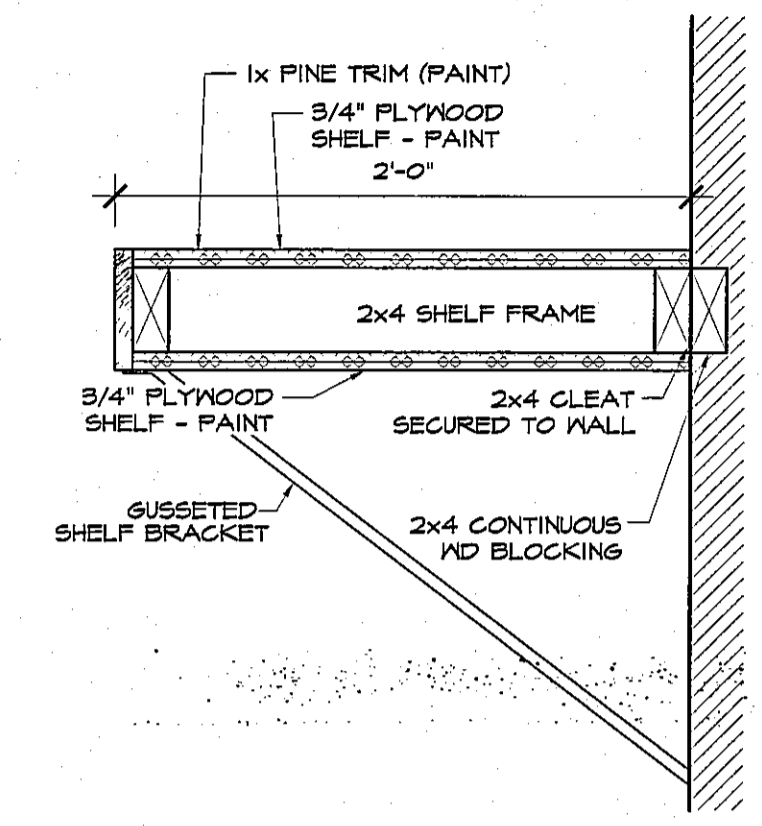
**A6.1**

**NOTES**

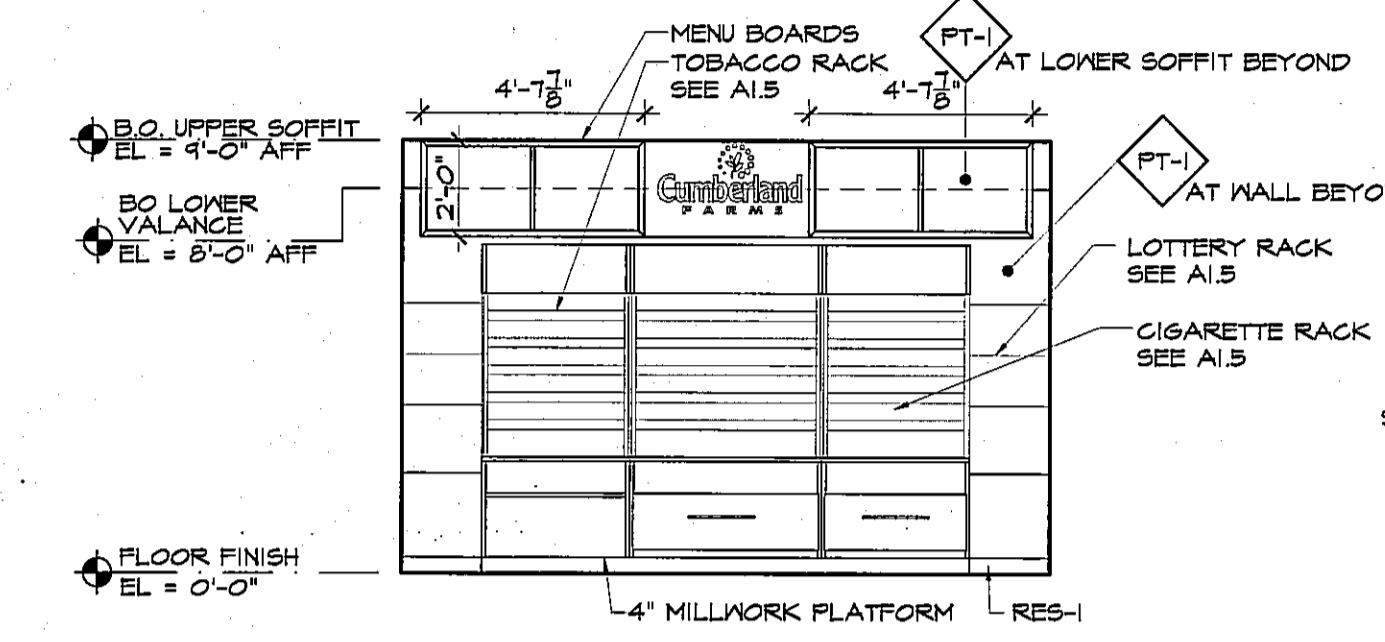
- 1) MOUNT ALL TOILET ACCESSORIES IN STRICT ACCORDANCE WITH THE AMERICAN DISABILITIES ACT OR GOVERNING HANDICAP CODE
- 2) PROVIDE WOOD BLOCKING BACK-UP FOR MOUNTING ALL ACCESSORIES

**ACCESSORY SCHEDULE**

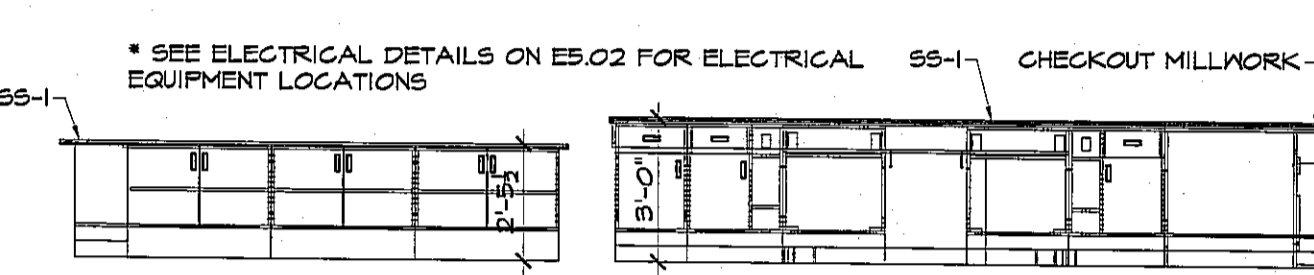
MARK	DESCRIPTION	MANUFACTURER	MODEL NUMBER	MT HEIGHT	REMARKS
1	COAT HOOK	ROCKWOOD	806 X US26D	54" AFF	MTD ON DOOR
2	TOILET PAPER HOLDER	BOBRICK	B-685	21" & OF UNIT	
3	PAPER TOWEL DISPENSER	KINBERLY CLARKE	04708	42" BOT OF UNIT	
4	SOAP DISPENSER	BOBRICK	B-155	38" BOT OF UNIT	
5	ELECTRIC HAND DRYER	EXCEL DRYER	XLERATOR XL-	42" BOT OF UNIT	COLOR AS SELECTED BY OWNER
6	MIRROR (36"x36")	N/A	N/A	40" BOT OF UNIT	STD 1/4" MIRROR
7	MOP HOLDER	BOBRICK	B-223 x 24"	48" AFF	
8	SOAP DISPENSER	BOBRICK	B-2111	38" BOT OF UNIT	
9	REAR GRAB BAR	BOBRICK	B-6806 x 36"	36" & OF UNIT	1/2" DIA - w/ PEENED GRIP
10	SIDE GRAB BAR	BOBRICK	B-6806 x 42"	36" & OF UNIT	1/2" DIA - w/ PEENED GRIP
11	TOILET PARTITION	MARLITE	HIGH DENSITY POLYMER (HDP)	PER MANUF RECOMMEND	#260 SANDSTONE
12	BABY CHANGING STATION	KOALA KARE	KB-101-05	PER MFG INST.	PROVIDE BLOCKING PER MFG RGTS



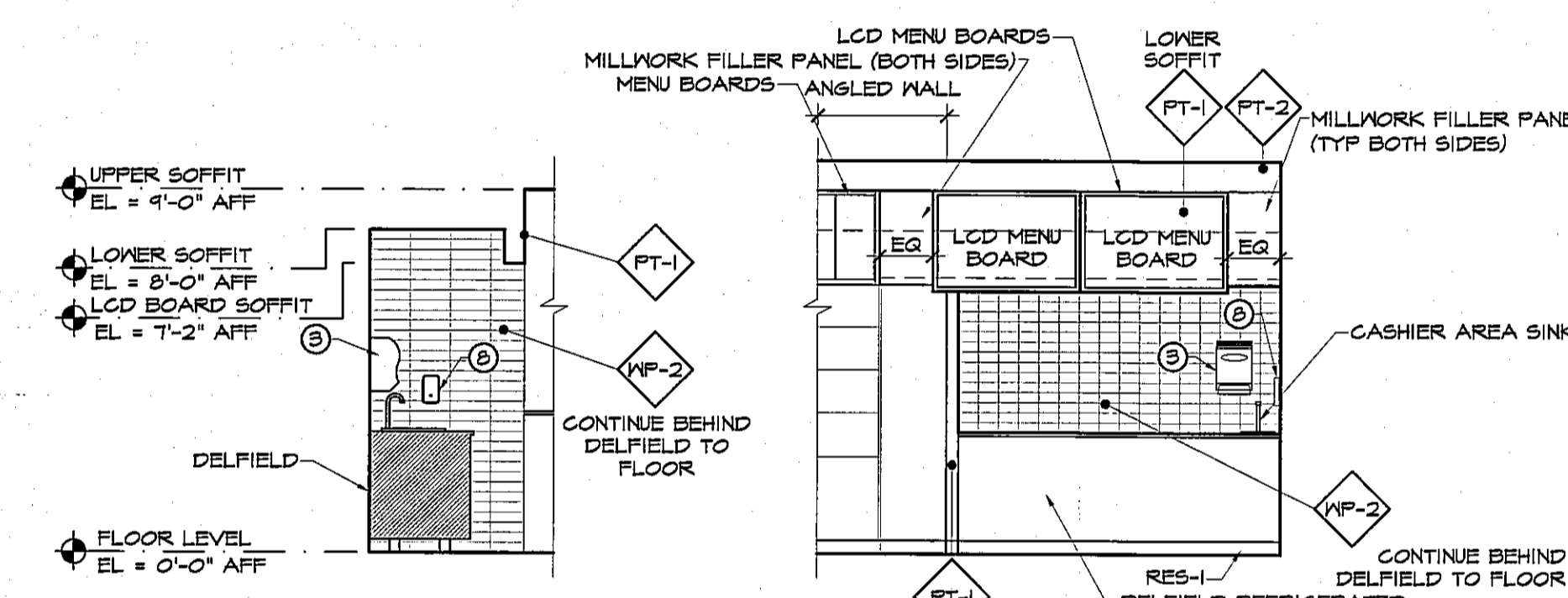
**13 SHELF DETAIL**  
 A6.1 SCALE: 1/2" = 1'-0"



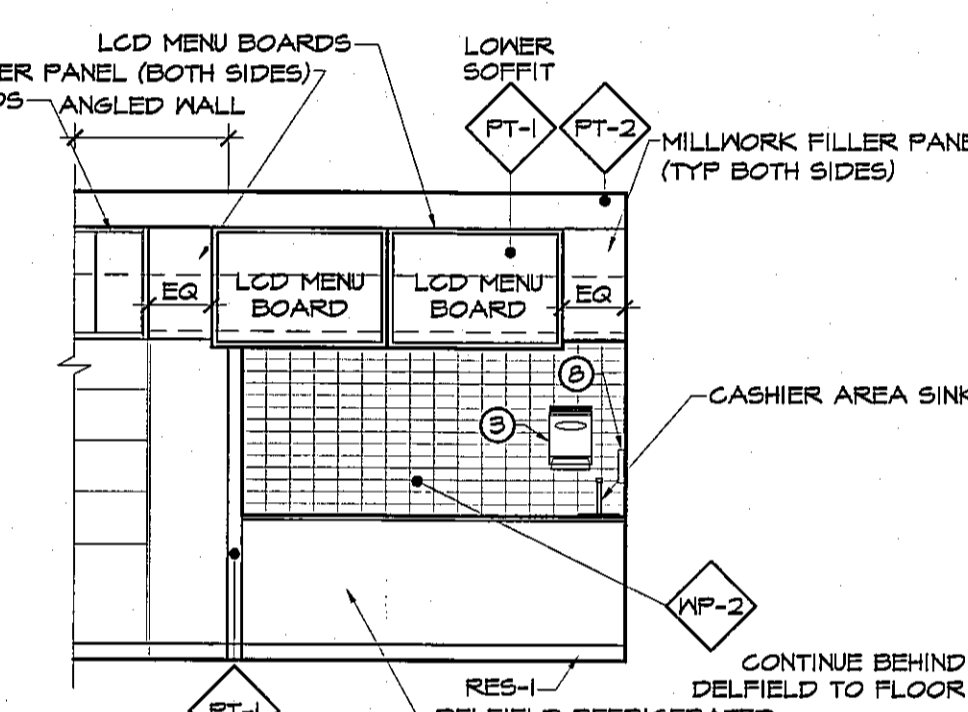
**12 ELEV AT CASHIER REAR WALL**  
 A1.1 SCALE: 1/4" = 1'-0"



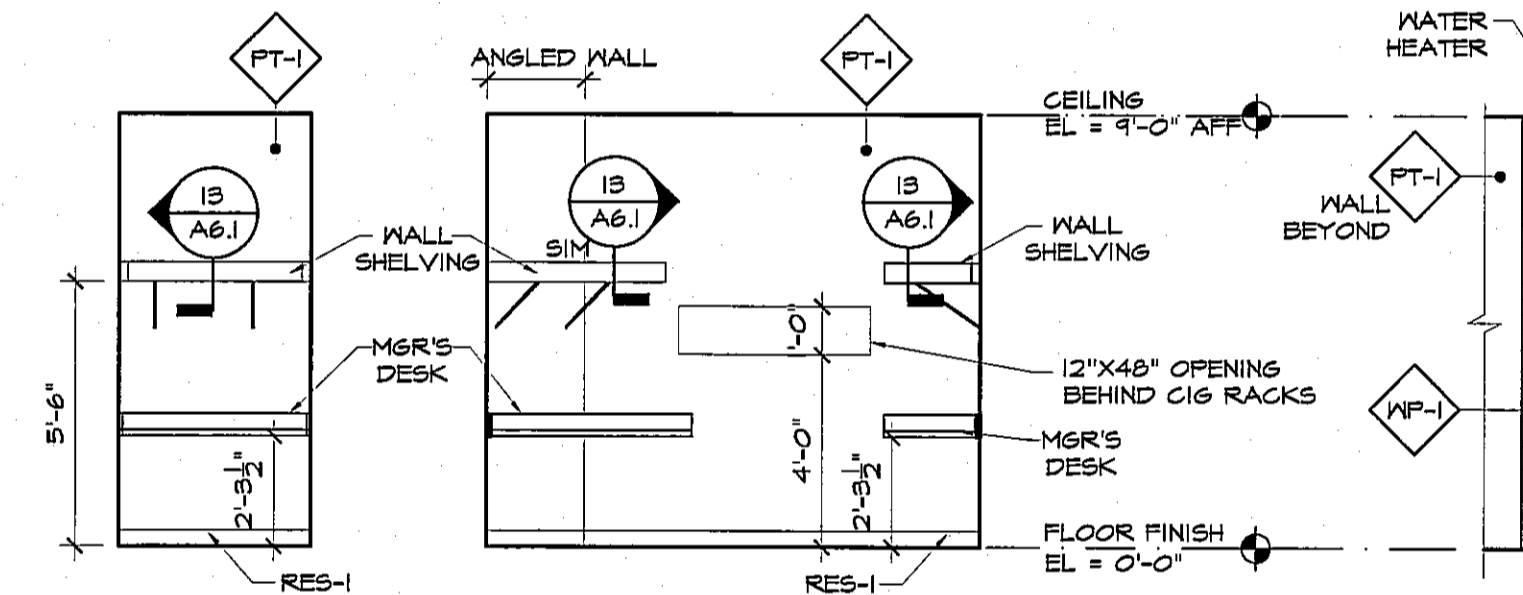
**11 CASHIER SIDE ELEVATION**  
 A1.1 SCALE: 1/4" = 1'-0"



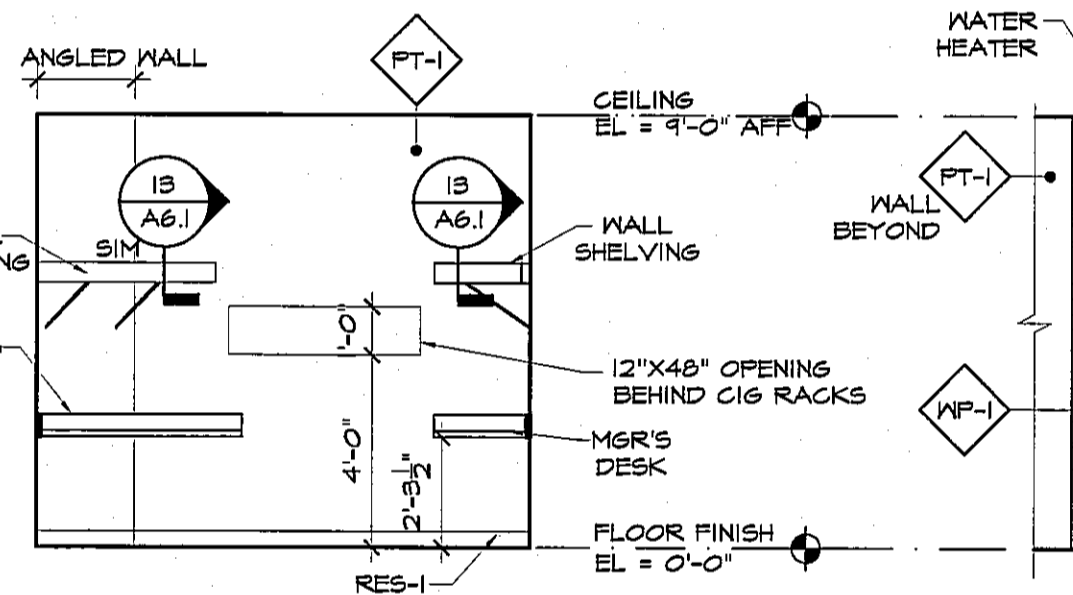
**10 ELEV AT DELFIELD**  
 A1.1 SCALE: 1/4" = 1'-0"



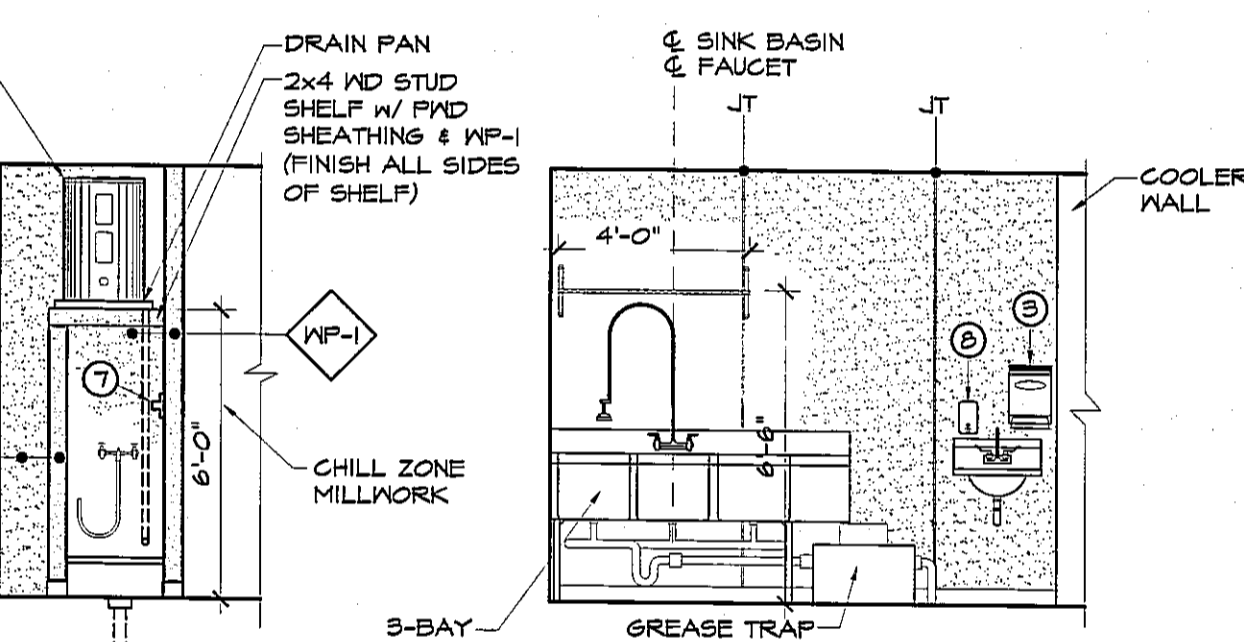
**9 ELEV AT DELFIELD**  
 A1.1 SCALE: 1/4" = 1'-0"



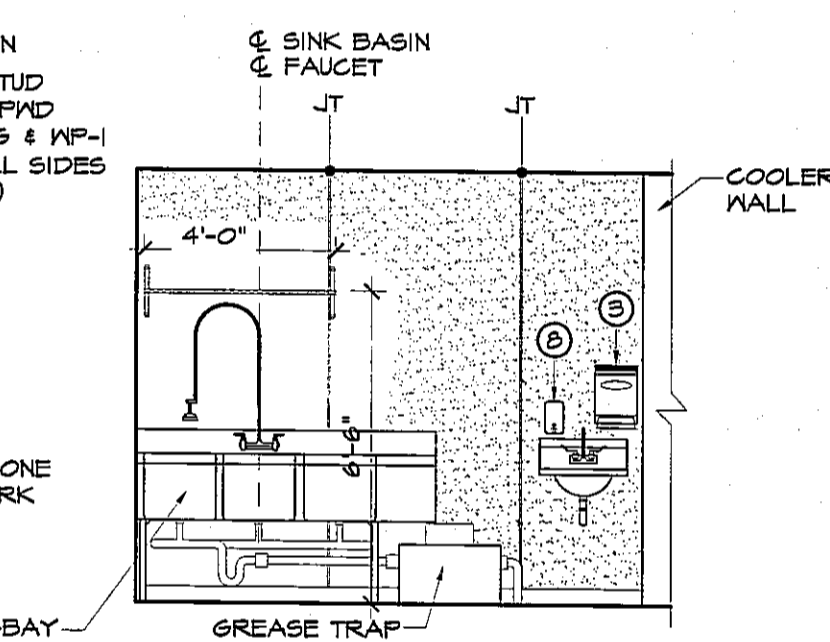
**8 MGR OFFICE ELEV**  
 A1.1 SCALE: 1/4" = 1'-0"



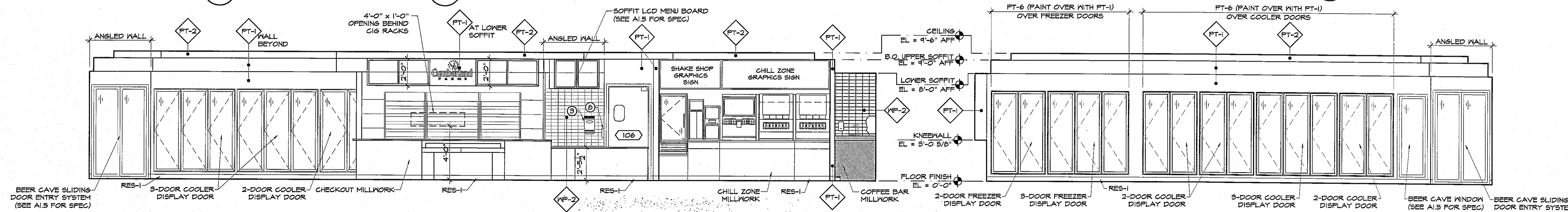
**7 MGR OFFICE ELEV**  
 A1.1 SCALE: 1/4" = 1'-0"



**6 UTILITY ELEVATION**  
 A1.1 SCALE: 1/4" = 1'-0"

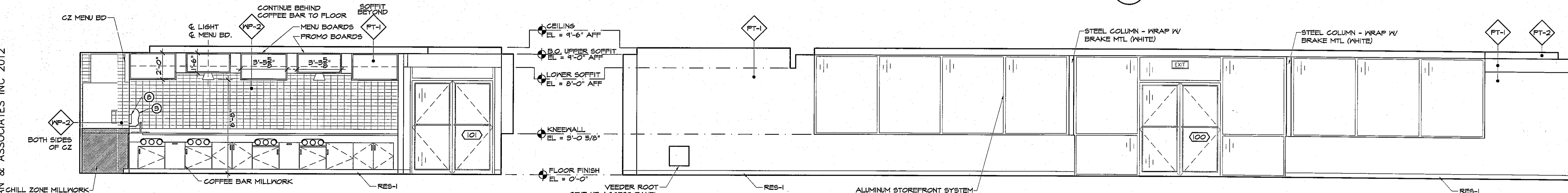


**5 UTILITY ELEVATION**  
 A1.1 SCALE: 1/4" = 1'-0"



**4 RETAIL AREA ELEVATION**  
 A1.1 SCALE: 1/4" = 1'-0"

**3 RETAIL AREA ELEVATION**  
 A1.1 SCALE: 1/4" = 1'-0"



**2 RETAIL AREA ELEVATION**  
 A1.1 SCALE: 1/4" = 1'-0"

**1 RETAIL AREA ELEVATION**  
 A1.1 SCALE: 1/4" = 1'-0"

© AHARONIAN & ASSOCIATES INC 2012