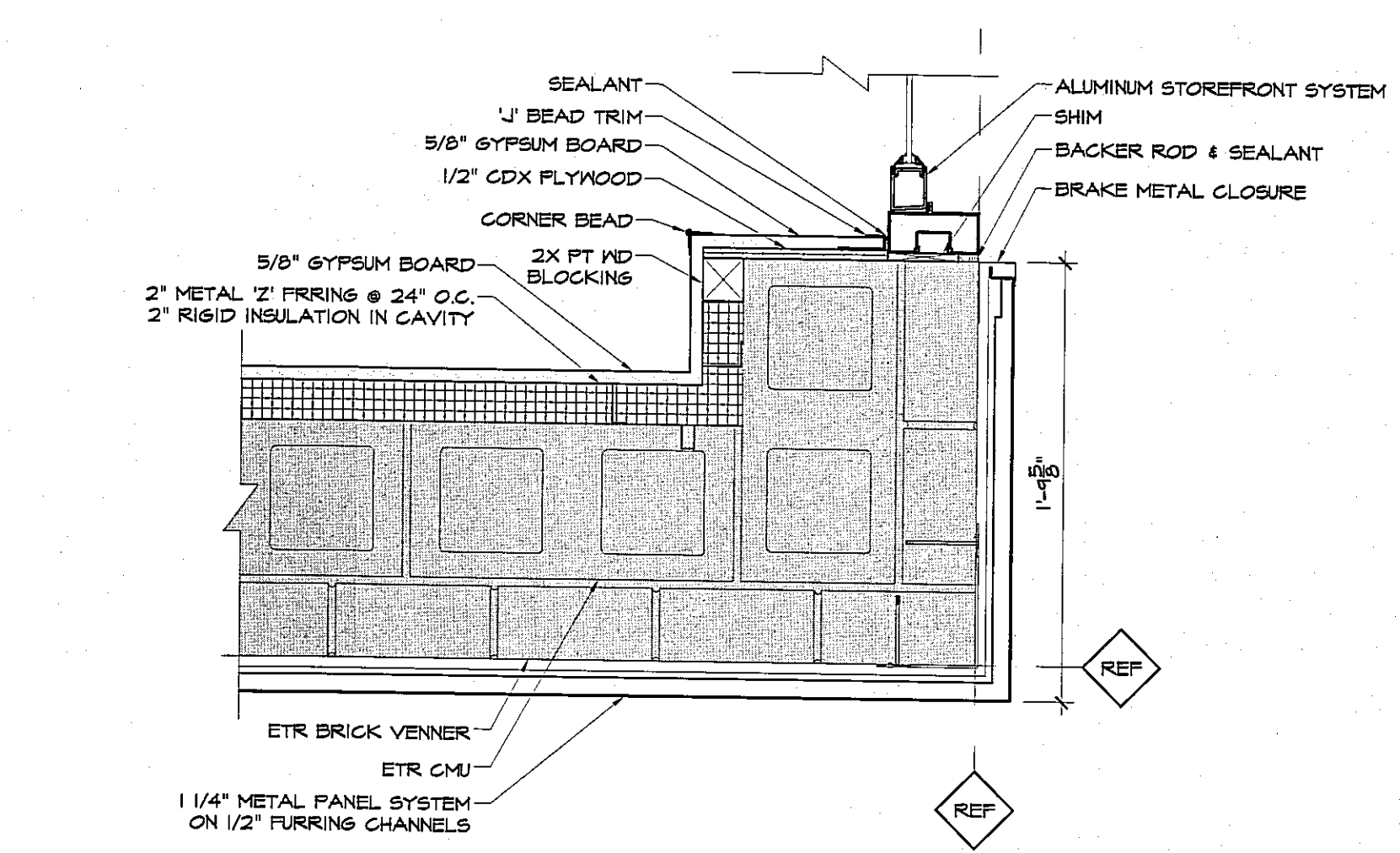
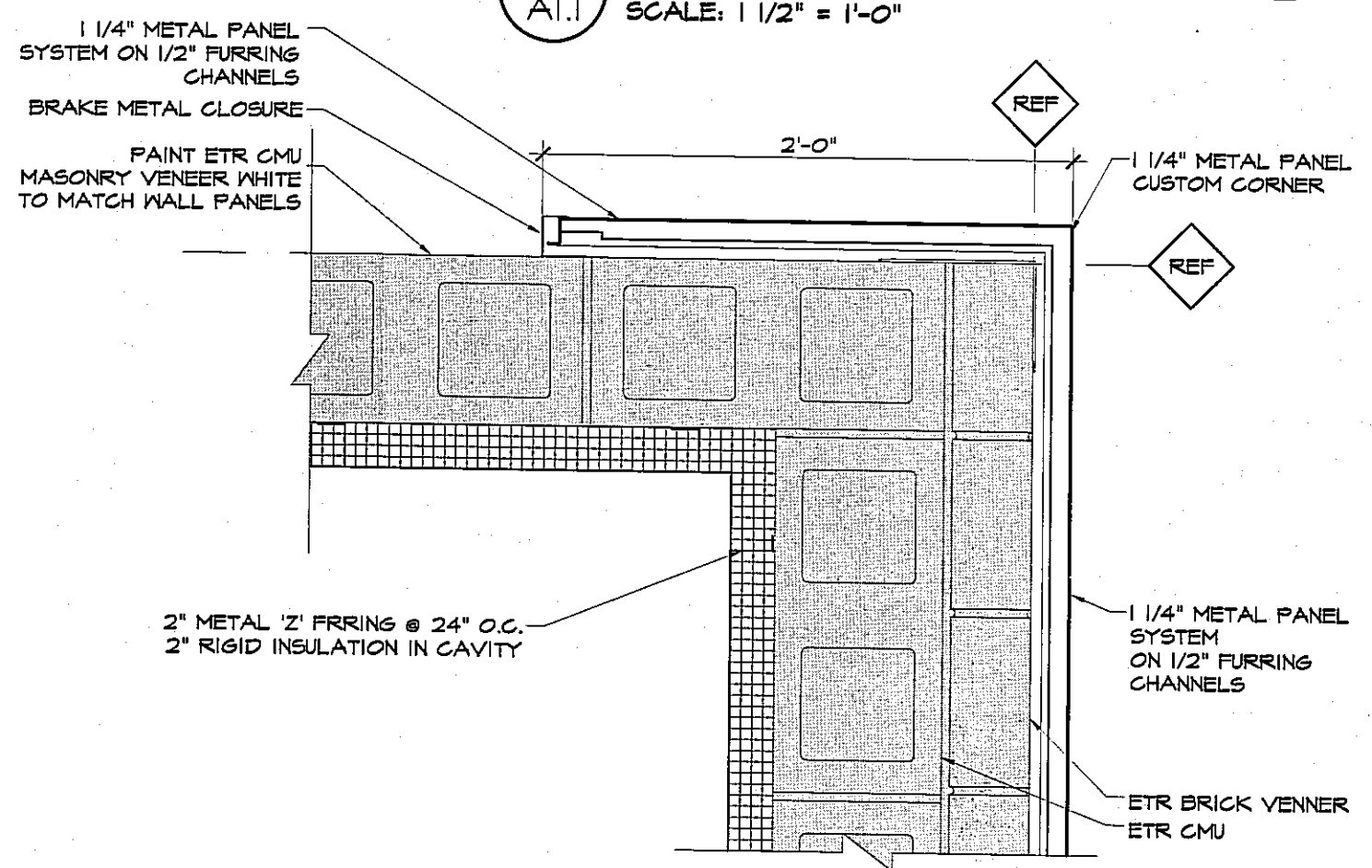


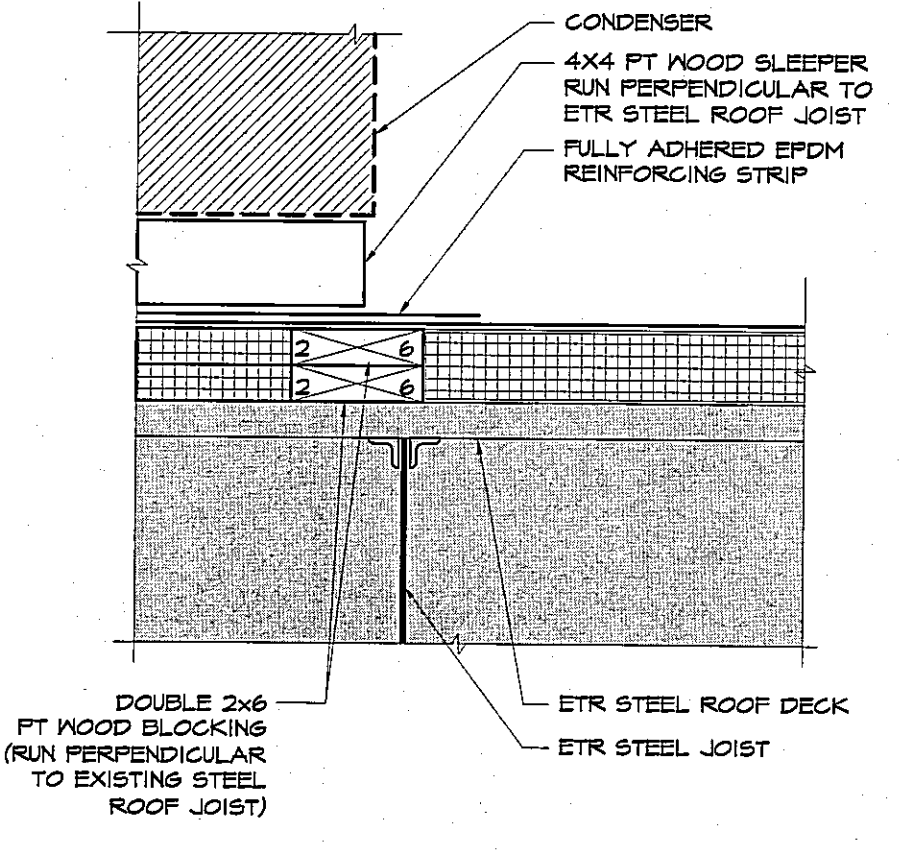
8 RTU CURB DETAIL
A1.6 SCALE: 1 1/2" = 1'-0"



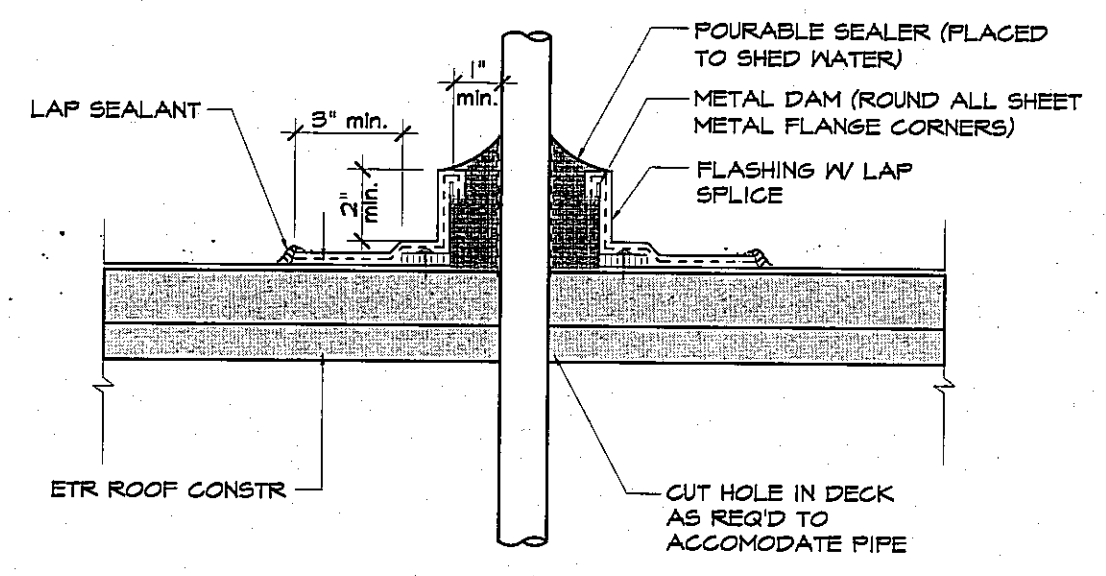
4 CORNER DETAIL
A1.1 SCALE: 1 1/2" = 1'-0"



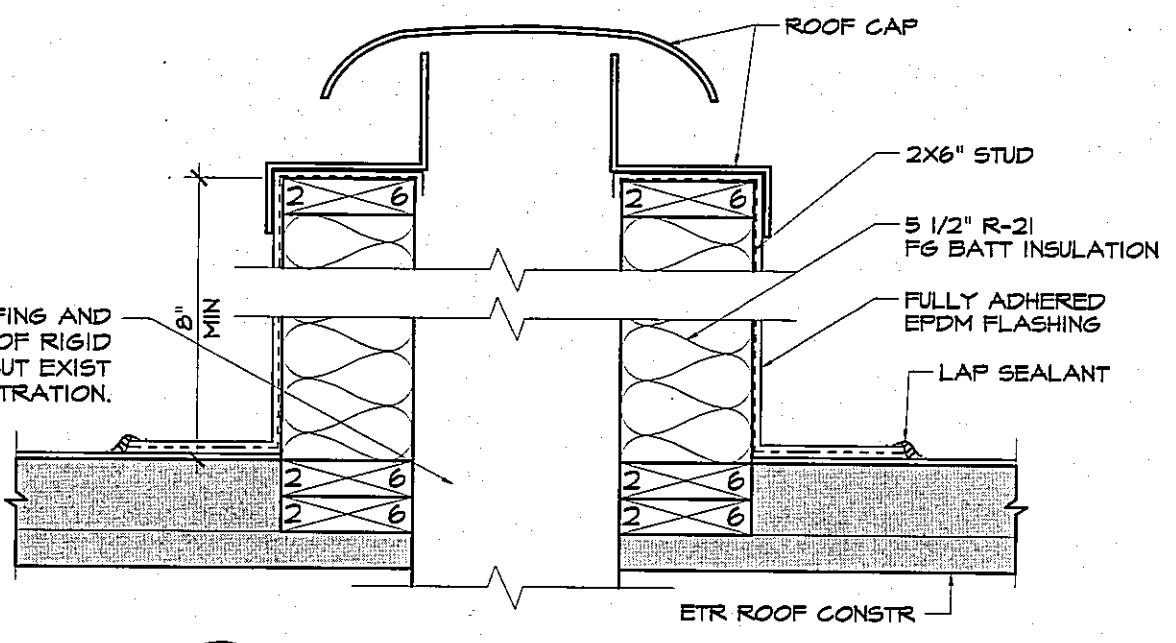
3 CORNER DETAIL
A1.1 SCALE: 1 1/2" = 1'-0"



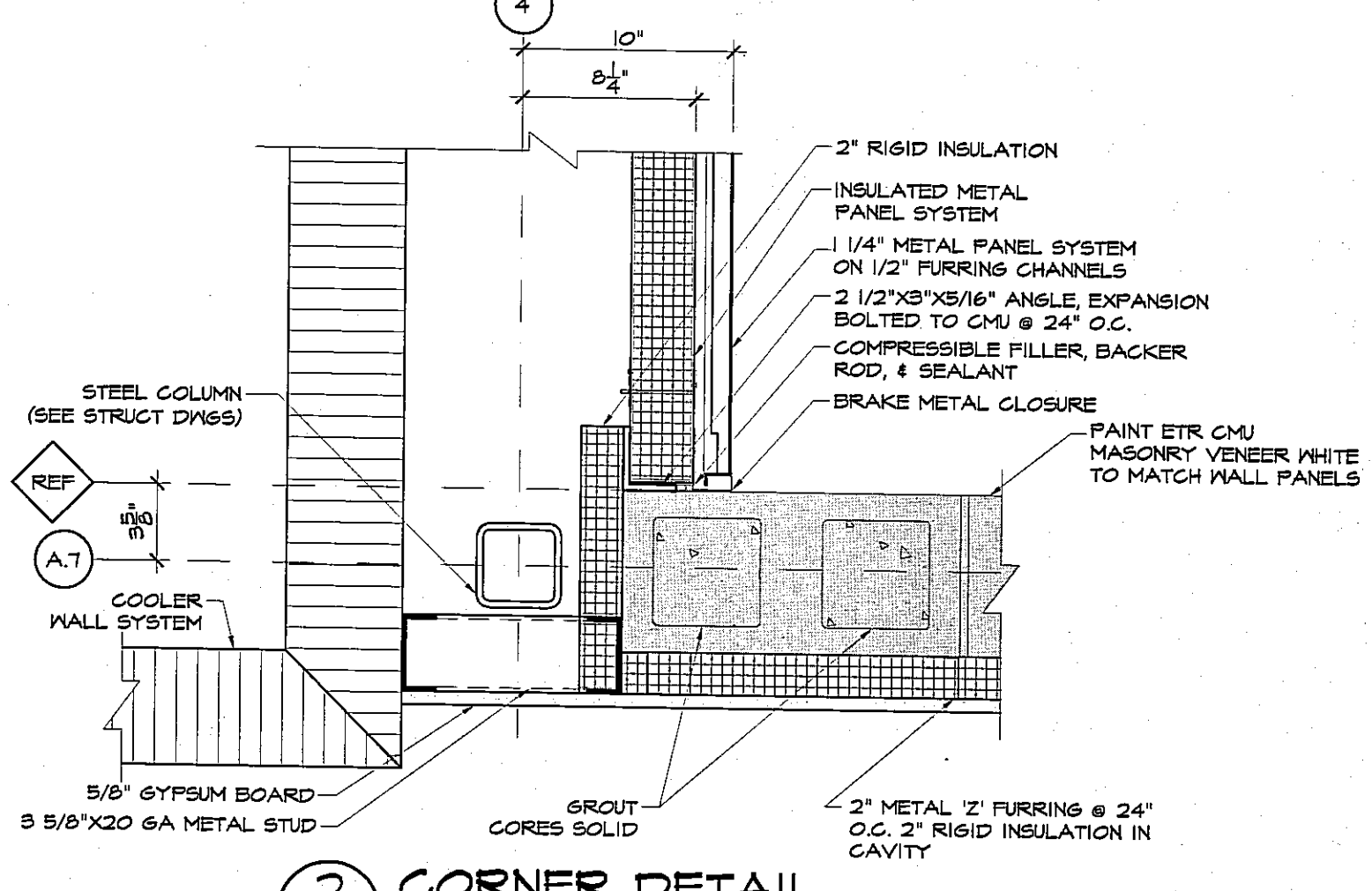
7 SLEEPER DETAIL
A1.6 SCALE: 1 1/2" = 1'-0"



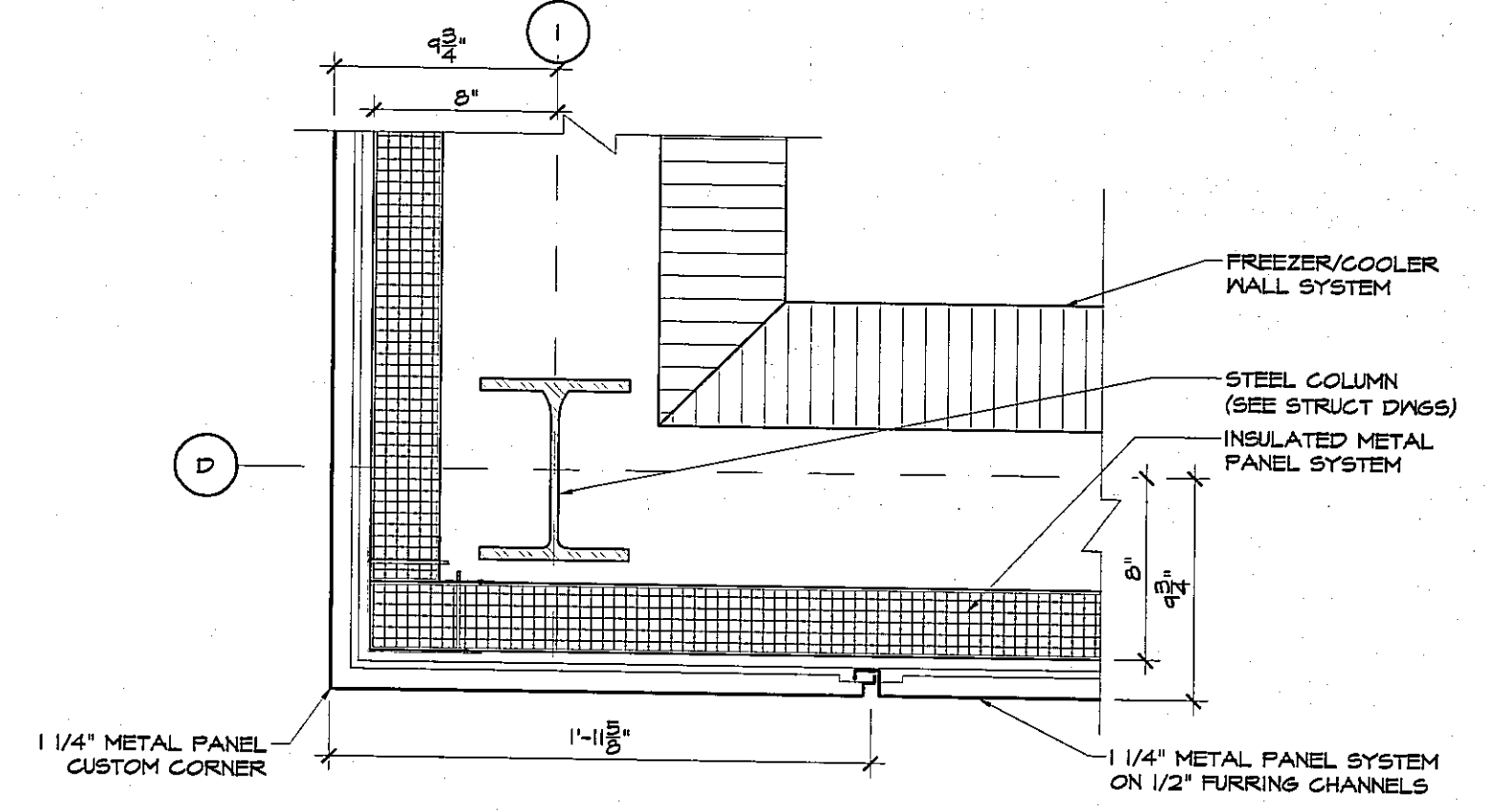
6 TYP SEALER POCKET DETAIL
A1.6 SCALE: 1 1/2" = 1'-0"



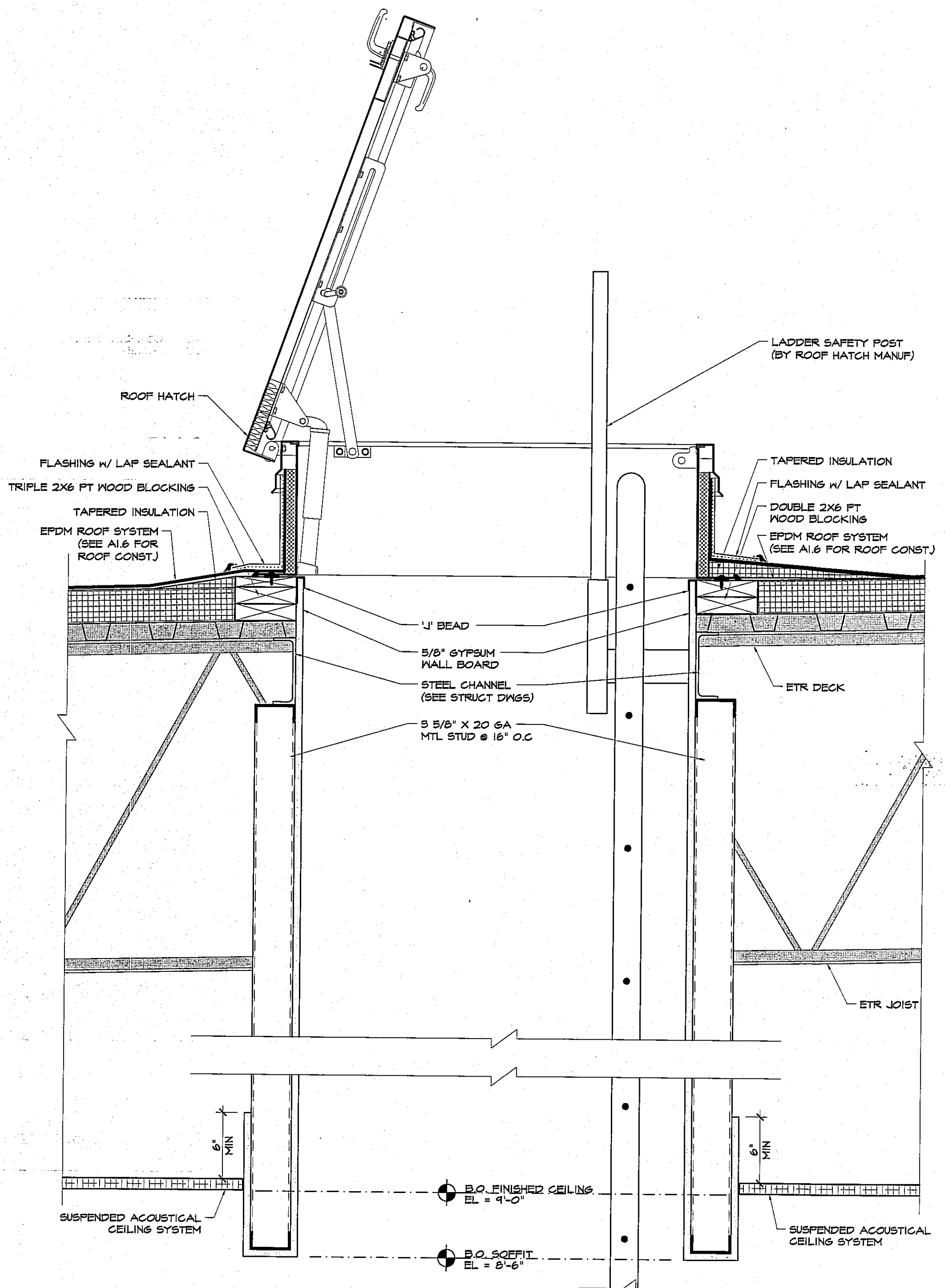
5 EF DUCT PENETRATION DETAIL
A1.6 SCALE: 1 1/2" = 1'-0"



2 CORNER DETAIL
A1.1 SCALE: 1 1/2" = 1'-0"



1 CORNER DETAIL
A1.1 SCALE: 1 1/2" = 1'-0"

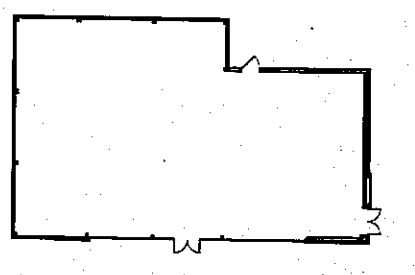


9 ROOF HATCH DETAIL
A1.6 SCALE: 1 1/2" = 1'-0"



AHARONIAN & ASSOCIATES INC. ARCHITECTS
310 George Washington Highway
Suite 100
Smithfield, Rhode Island
0 2 9 1 7
T 401-232-8010
F 401-232-8080
WWW.ARCH-ENG.COM

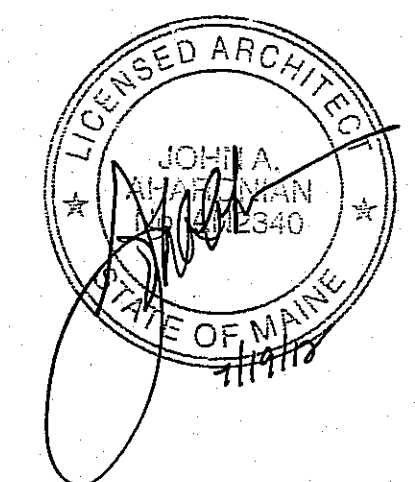
DISCLAIMER
OWNERSHIP AND USE OF DOCUMENTS, DRAWINGS AND SPECIFICATIONS ARE INSTRUMENTS OF PROFESSIONAL SERVICE AND SHALL REMAIN THE PROPERTY OF THE ARCHITECT. THESE DOCUMENTS ARE NOT TO BE USED, IN WHOLE OR IN PART, FOR ANY OTHER PROJECTS OR PURPOSES OR BY ANY OTHER PARTIES THAN THOSE PROPERLY AUTHORIZED BY CONTRACT WITHOUT THE EXPRESS WRITTEN AUTHORIZATION OF THE ARCHITECT.



KEY PLAN

REVISIONS

NUMBER	REMARKS	DATE



FOR CONSTRUCTION

PROJECT TITLE
Cumberland FARMS
100 Crossing Blvd, Framingham, Massachusetts
STORE # 5604
V1079

801 WASHINGTON AVE
PORTLAND, ME
Cumberland County

DRAWING TITLE
DETAILS

DATE JULY 19, 2012	PROJ NO 11112
DRAWN BY MD	CHECKED BY AZ

DRAWING NUMBER
A5.1