



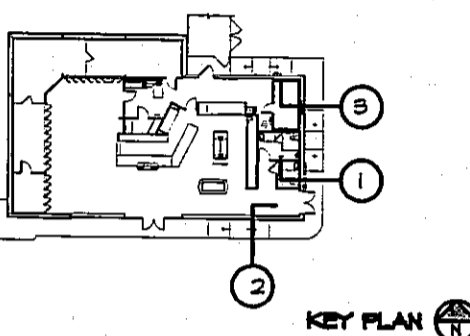
**AHARONIAN
& ASSOCIATES INC.
ARCHITECTS**

310 George Washington Highway
Suite 100
Smithfield, Rhode Island
0 2 9 1 7

T 401-232-5010
F 401-232-5080
WWW.ARCH-ENG.COM

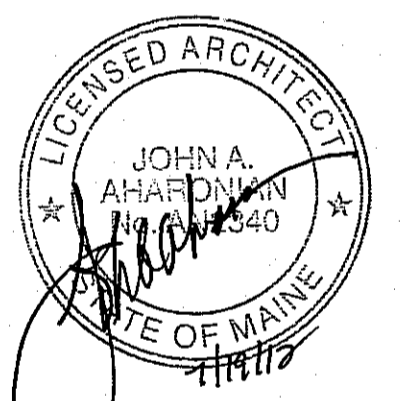
DISCLAIMER

OWNERSHIP AND USE OF DOCUMENTS, DRAWINGS AND SPECIFICATIONS ARE INSTRUMENTS OF PROFESSIONAL SERVICE AND SHALL REMAIN THE PROPERTY OF THE ARCHITECT. THESE DOCUMENTS ARE NOT TO BE USED, IN WHOLE OR IN PART, FOR ANY OTHER PROJECTS OR PURPOSES OR BY ANY OTHER PARTIES THAN THOSE PROPERLY AUTHORIZED BY CONTRACT WITHOUT THE EXPRESS WRITTEN AUTHORIZATION OF THE ARCHITECT.



REVISIONS

NUMBER	REMARKS	DATE



FOR CONSTRUCTION

PROJECT TITLE
Cumberland Farms
100 Crossing Blvd, Framingham, Massachusetts
STORE # 5604
V1079

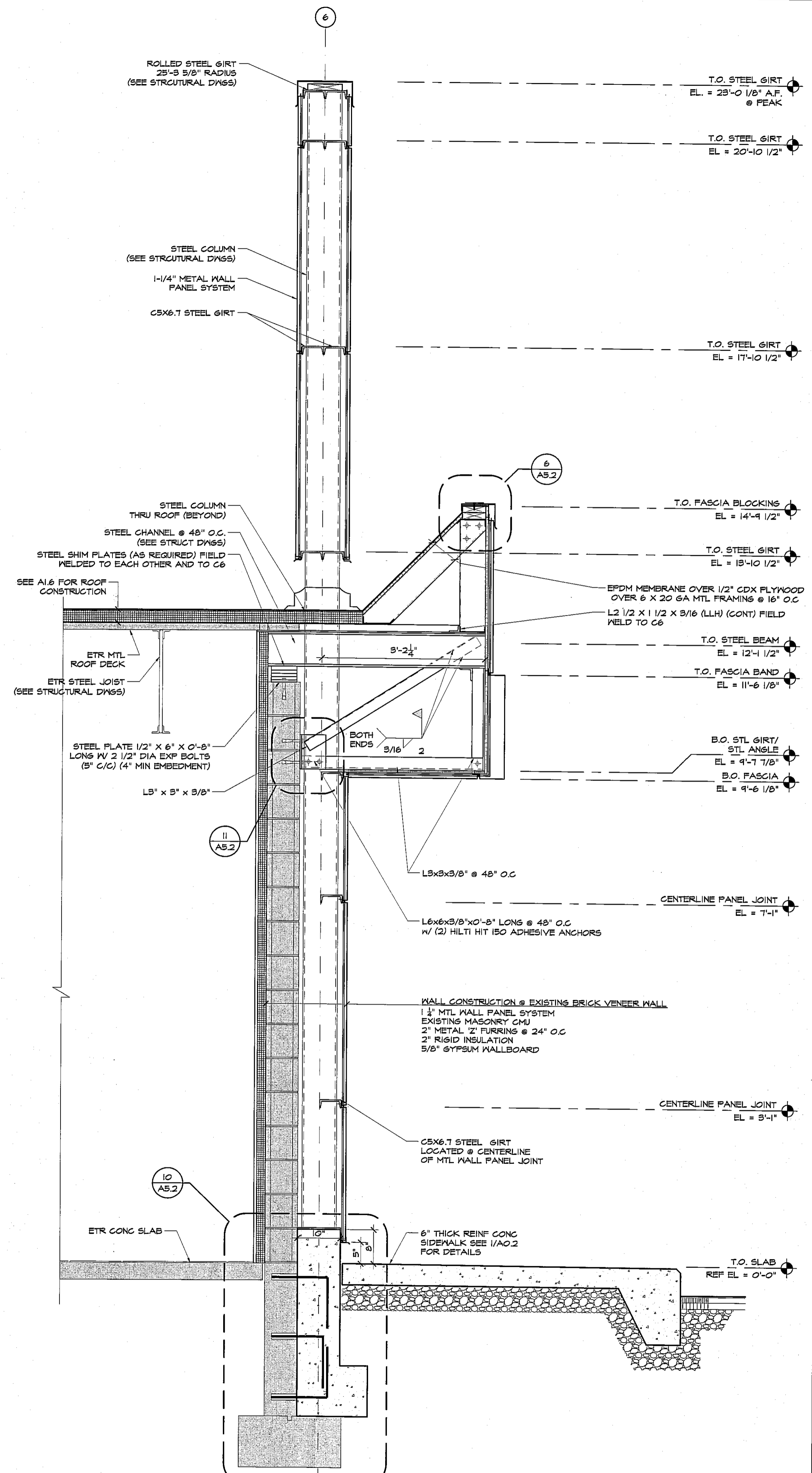
**801 WASHINGTON AVE
PORTLAND, ME
Cumberland County**

DRAWING TITLE
WALL SECTIONS

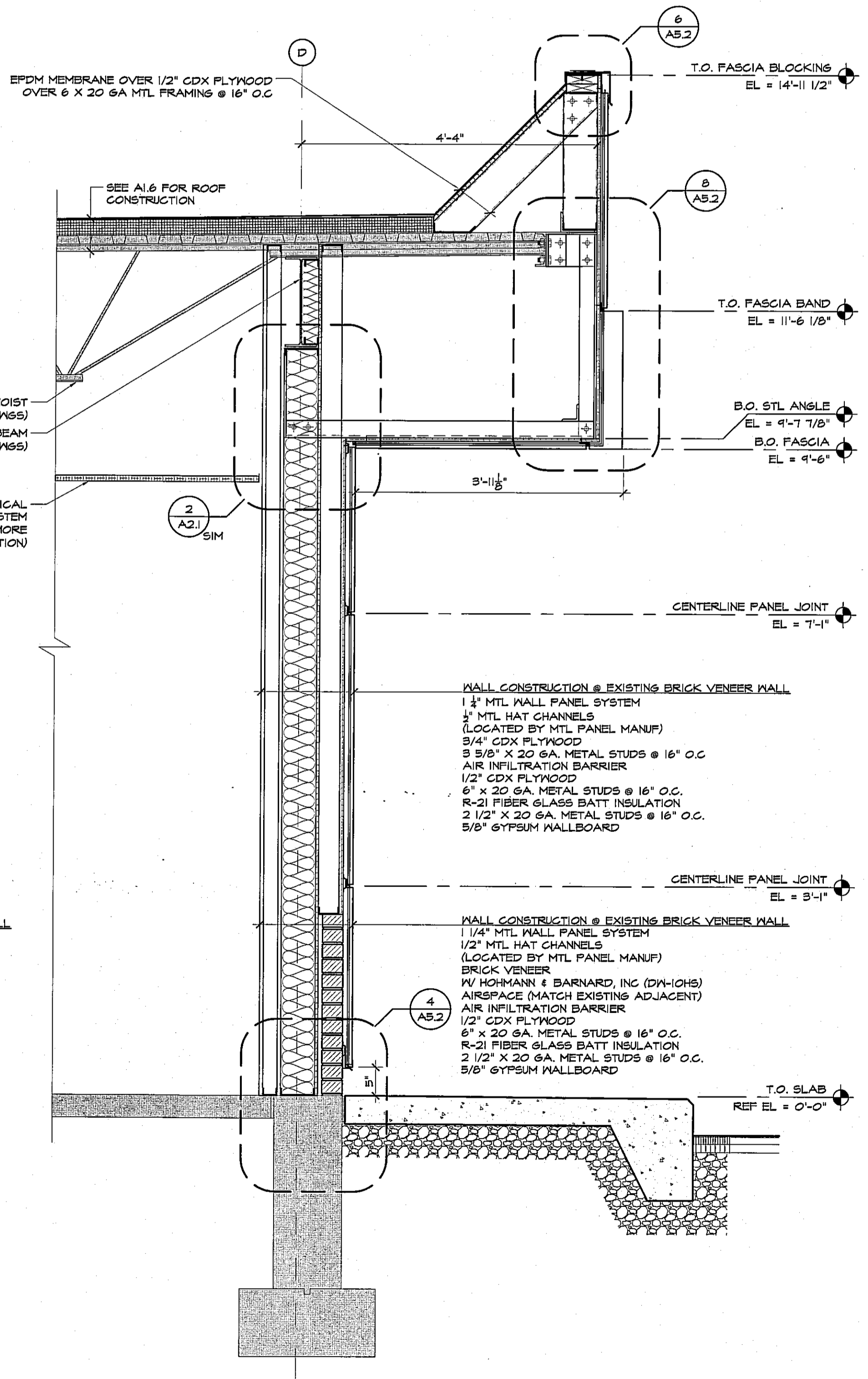
DATE	PROJ NO
JULY 19, 2012	11112
DRAWN BY	CHECKED BY
MBF	AZ

DRAWING NUMBER

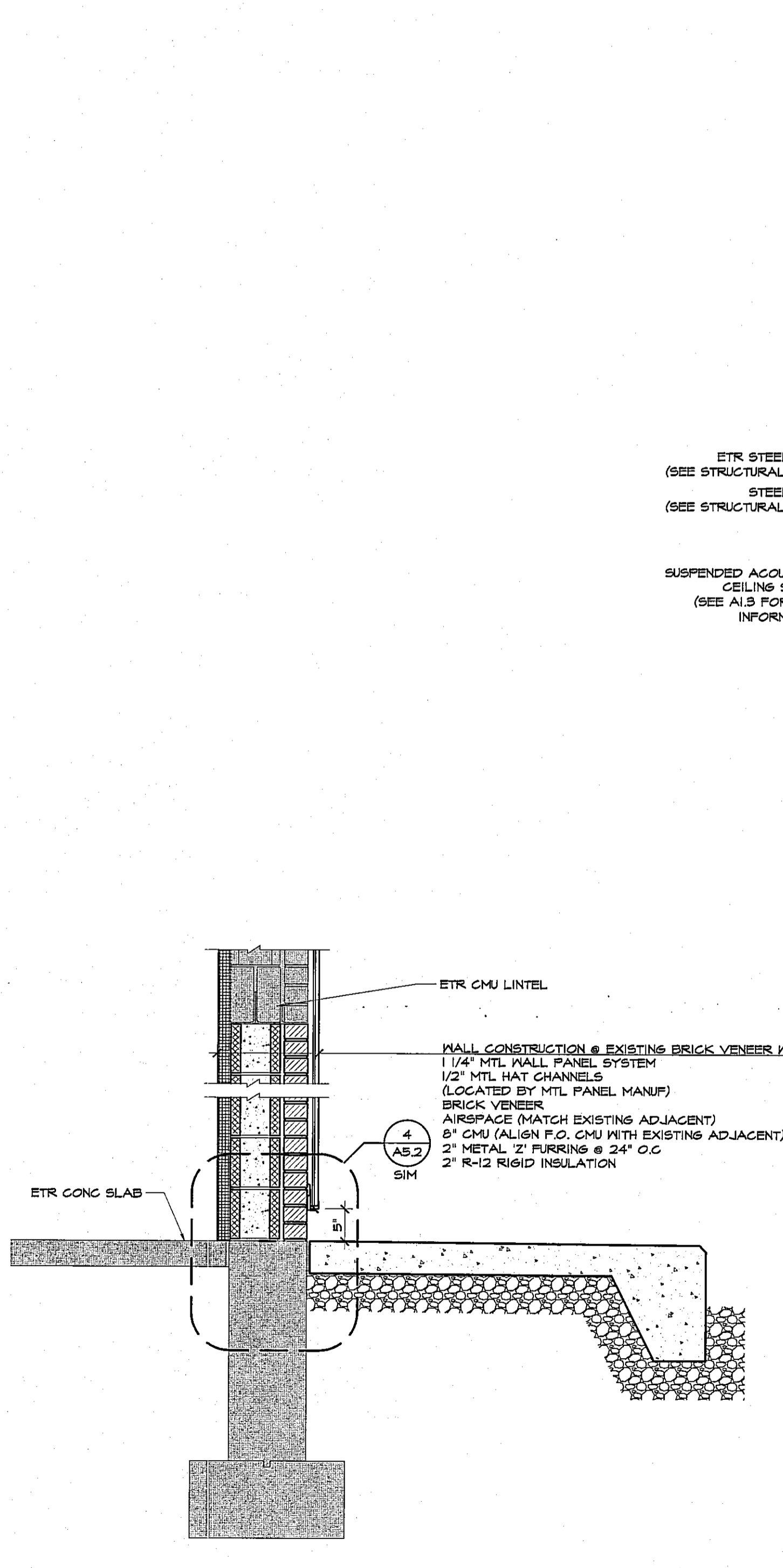
A4.5



1 SECTION @ FRONT WALL @ ADDITION
SCALE: 3/4" = 1'-0"



2 SECTION @ FRONT EXISTING BRICK
SCALE: 3/4" = 1'-0"



3 SECTION @ DOOR INFILL
SCALE: 3/4" = 1'-0"

© AHARONIAN & ASSOCIATES INC 2012