

AHARONIAN & ASSOCIATES INC. ARCHITECTS

310 George Washington Highway  
Suite 100  
Smithfield, Rhode Island  
0 2 9 1 7

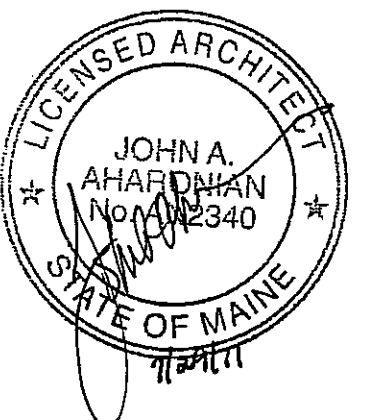
T 401-232-5010  
F 401-232-5080  
WWW.ARCH-ENG.COM

DISCLAIMER

OWNERSHIP AND USE OF DOCUMENTS, DRAWINGS AND SPECIFICATIONS ARE INSTRUMENTS OF PROFESSIONAL SERVICE AND SHALL REMAIN THE PROPERTY OF THE ARCHITECT. THESE DOCUMENTS ARE NOT TO BE USED, IN WHOLE OR IN PART, FOR ANY OTHER PROJECTS OR PURPOSES OR BY ANY OTHER PARTIES THAN THOSE PROPERLY AUTHORIZED BY CONTRACT WITHOUT THE EXPRESS WRITTEN AUTHORIZATION OF THE ARCHITECT.

REVISIONS

NUMBER	REMARKS	DATE
1	REVISED FLOOR PLAN	7-29-11



PRELIMINARY

PROJECT TITLE

**Cumberland FARMS**  
100 Crossing Blvd, Framingham, Massachusetts  
STORE # 5604  
V1079

801 WASHINGTON AVE  
PORTLAND, ME  
Cumberland County

DRAWING TITLE

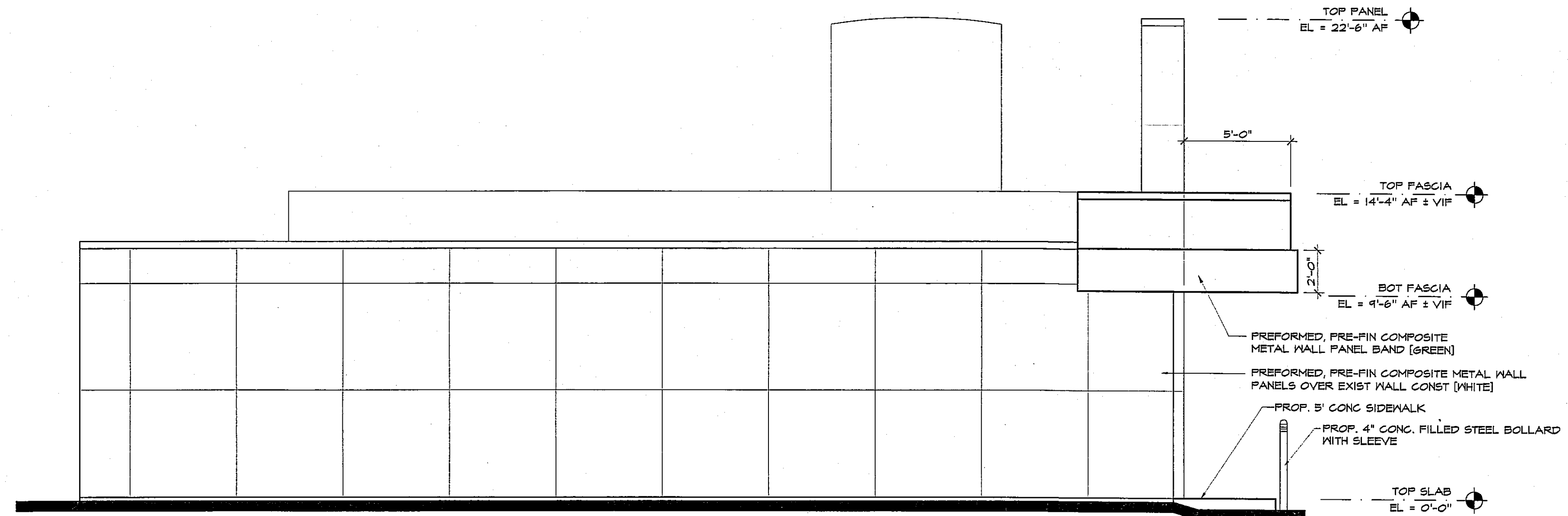
EXTERIOR ELEVATIONS

DATE JULY 18, 2011	PROJ NO 11112
DRAWN BY SD/RSP	CHECKED BY AZ

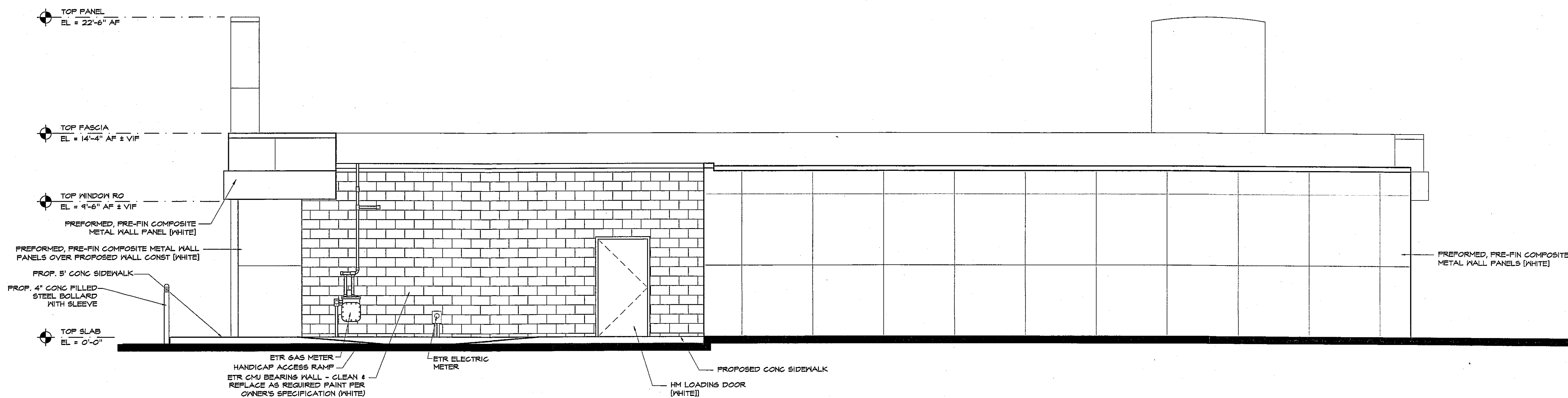
DRAWING NUMBER

A3.2

NOT FOR CONSTRUCTION - NOT FOR CONSTRUCTION - NOT FOR CONSTRUCTION - NOT FOR CONSTRUCTION



② WEST (SIDE) ELEVATION  
SCALE: 1/4"=1'-0"



① NORTH (REAR) ELEVATION  
SCALE: 1/4"=1'-0"

\*DO NOT USE FOR CONST\*