

AHARONIAN & ASSOCIATES INC. ARCHITECTS

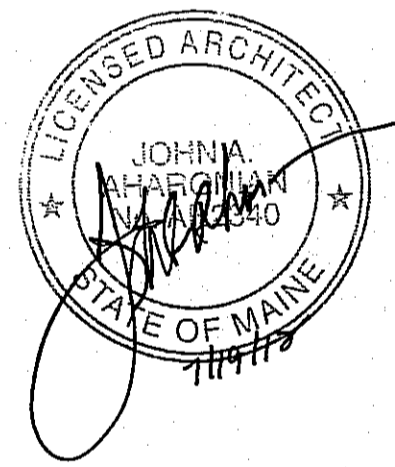
310 George Washington Highway Suite 100 Smithfield, Rhode Island 0 2 9 1 7 T 401-232-5010 F 401-232-5000 WWW.ARCH-ENG.COM

DISCLAIMER

OWNERSHIP AND USE OF DOCUMENTS, DRAWINGS AND SPECIFICATIONS ARE INSTRUMENTS OF PROFESSIONAL SERVICE AND SHALL REMAIN THE PROPERTY OF THE ARCHITECT. THESE DOCUMENTS ARE NOT TO BE USED, IN WHOLE OR IN PART, FOR ANY OTHER PROJECTS OR PURPOSES OR BY ANY OTHER PARTIES THAN THOSE PROPERLY AUTHORIZED BY CONTRACT WITHOUT THE EXPRESS WRITTEN AUTHORIZATION OF THE ARCHITECT.

REVISIONS

Table with 3 columns: NUMBER, REMARKS, DATE. Contains one revision entry.



FOR CONSTRUCTION

PROJECT TITLE: Cumberland Farms 100 Crossing Blvd, Frammingham, Massachusetts STORE # 5604 V1079

801 WASHINGTON AVE PORTLAND, ME Cumberland County

DRAWING TITLE: DOOR & FINISH SCHEDULES & DETAILS

Table with 2 columns: DATE, PROJ NO; DRAWN BY, CHECKED BY; DRAWING NUMBER.

A2.1

FINISH SCHEDULE

Table with columns: ROOM, FLOOR, BASE, NORTH WALL, EAST WALL, SOUTH WALL, WEST WALL, CEILING, REMARKS. Lists finishes for various rooms like Retail, Cashier Area, etc.

HARDWARE SETS

- Hardware sets for door types: E-1 (BY ALUM MANUFACTURER), E-2, P-1, P-2, P-3. Lists items like pair butts, closers, passage sets, etc.

DOOR SCHEDULE

Table with columns: MARK/LOCATION, NO, ROOM (FROM / TO), TYPE, WIDTH, HEIGHT, THICK, MAT, FINISH, HEAD DTL, JAMB DTL, THRESHOLD DTL, TYPE, MAT, FINISH, SET, REMARKS. Lists door specifications for 100-110.

FINISH NOTES

- Notes regarding interior elevations, joint compound, prime coats, gypsum board specifications, and existing surface finishes.

DOOR & FRAME NOTES

- Notes for interior doors: flush face, primed steel door frames, hardware, and exterior door sealant.

EXTERIOR DOORS

- Notes for exterior doors: steel doors to comply with SDC-100, insulated, and exterior door sealant.

STOREFRONT / GLAZING

- Notes for storefront and glazing: aluminum storefront system, insulated mtl panel, and exterior door sealant.

INSULATED PANEL

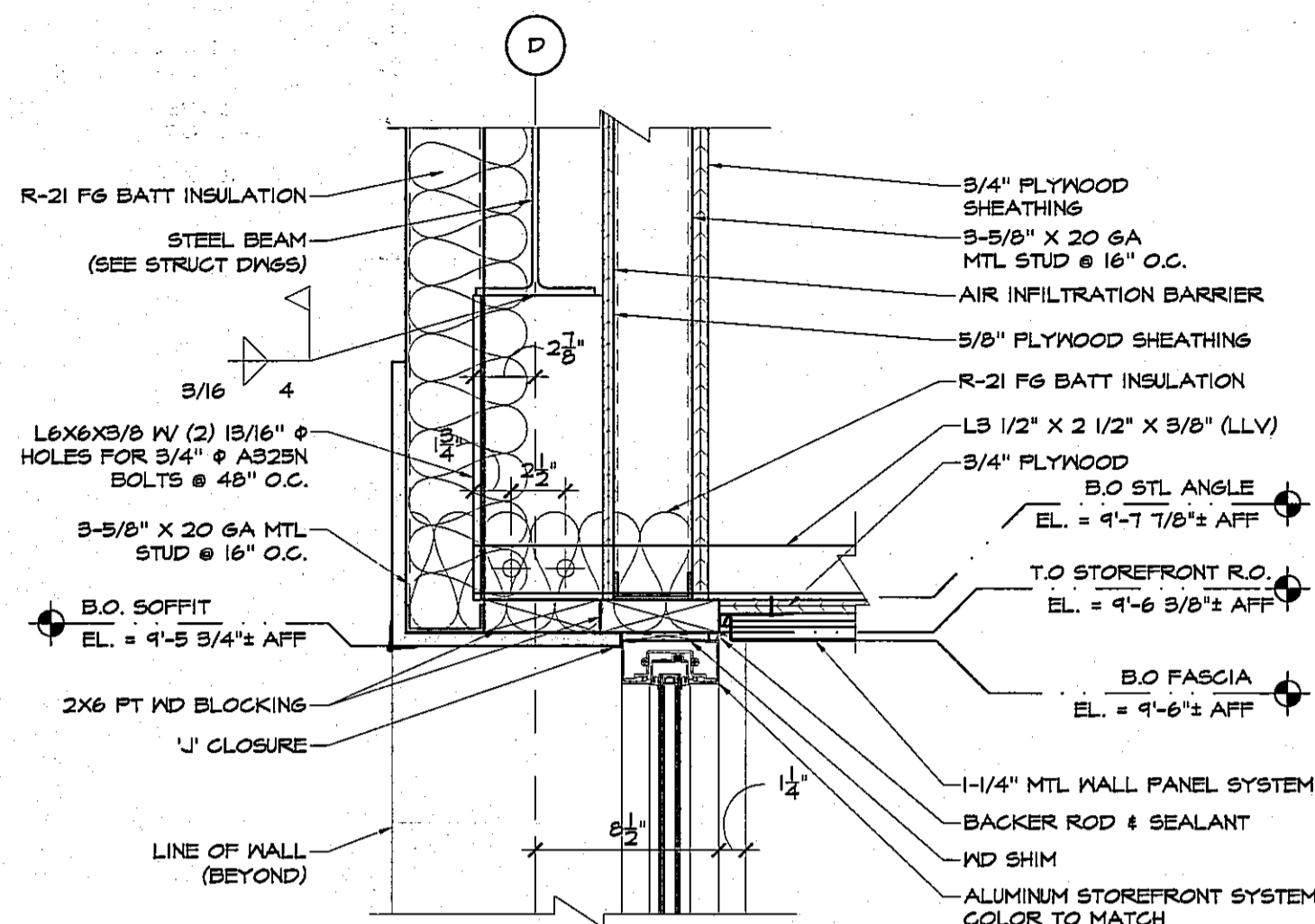
- Notes for insulated panels: provide insulated panel at all locations, metal panels as manuf by Hanes Industries.

GLAZING SPEC

- Notes for glazing: sealed insulating low-e glazing, solar ban 60 (2) 'clear' as manufactured by PPG Industries.

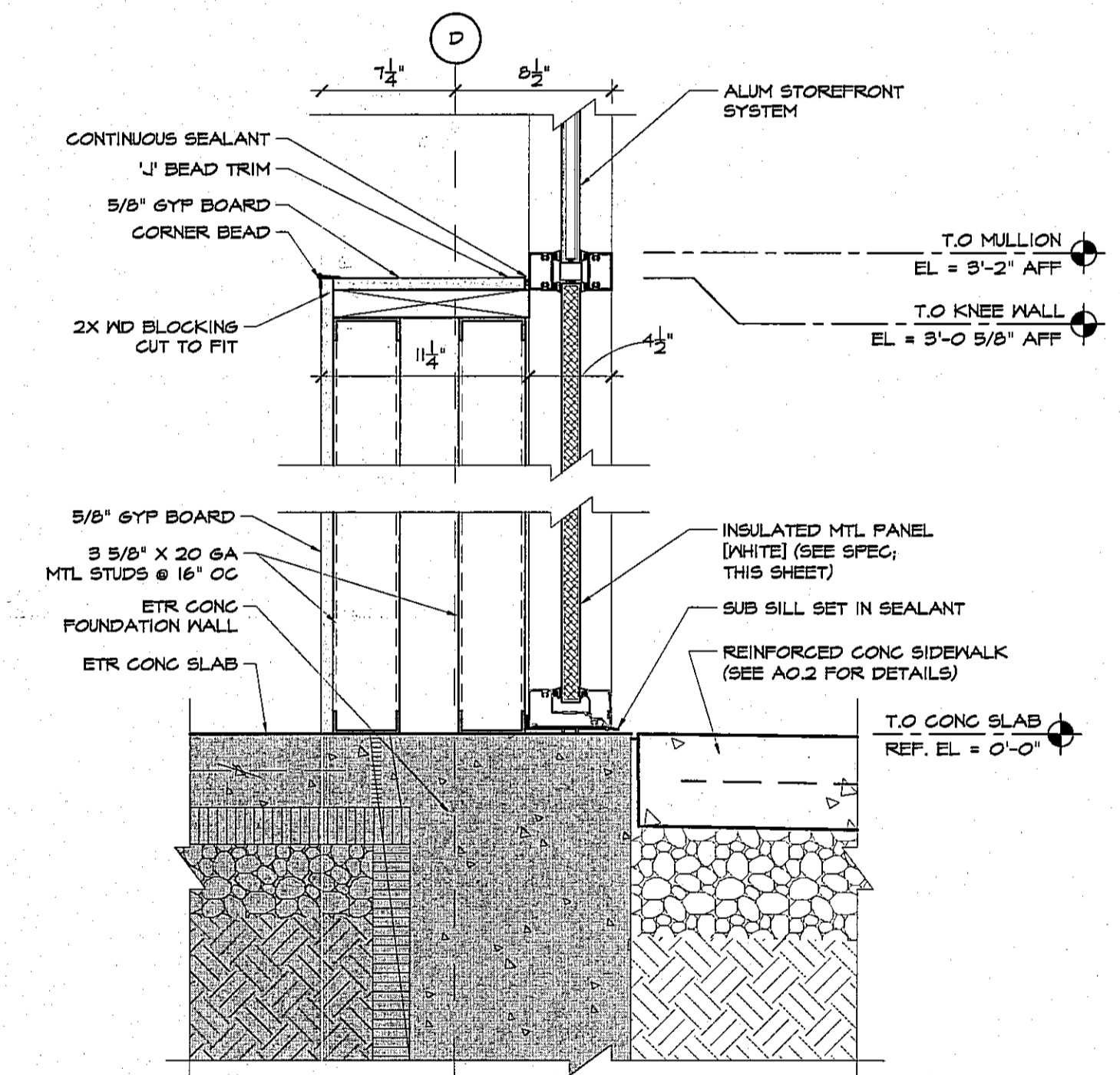
ELIASON SCP-6 DOOR SPEC

- Notes for Eliaison SCP-6 door: door body, 0.15" exterior grade solid wood core, 1" total door thickness, finish laminate.



HEAD DETAIL @ STOREFRONT

SCALE: 1/2" = 1'-0"



KNEEWALL DETAIL @ STOREFRONT

SCALE: 1/2" = 1'-0"

