



AHARONIAN
& ASSOCIATES INC.
ARCHITECTS

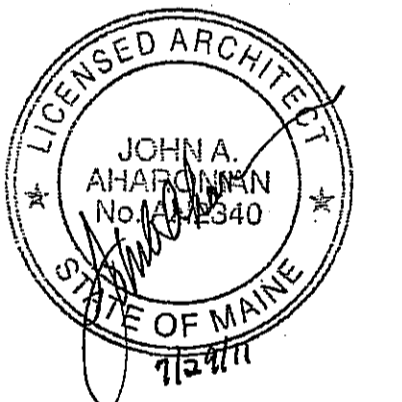
310 George Washington Highway
Suite 100
Smithfield, Rhode Island
02917
T 401-232-5010
F 401-232-5080
WWW.ARCH-ENG.COM

DISCLAIMER

OWNERSHIP AND USE OF DOCUMENTS, DRAWINGS AND SPECIFICATIONS ARE INSTRUMENTS OF PROFESSIONAL SERVICE AND SHALL REMAIN THE PROPERTY OF THE ARCHITECT. THESE DOCUMENTS ARE NOT TO BE USED, IN WHOLE OR IN PART, FOR ANY OTHER PROJECTS OR PURPOSES OR BY ANY OTHER PARTIES THAN THOSE PROPERLY AUTHORIZED BY CONTRACT WITHOUT THE EXPRESS WRITTEN AUTHORIZATION OF THE ARCHITECT.

REVISIONS

NUMBER	REMARKS	DATE
1	REVISED FLOOR PLAN	7-29-11



PRELIMINARY

PROJECT TITLE
Cumberland Farms
100 Crossing Blvd, Framingham, Massachusetts
STORE # 5604
V1079

801 WASHINGTON AVE
PORTLAND, ME
Cumberland County

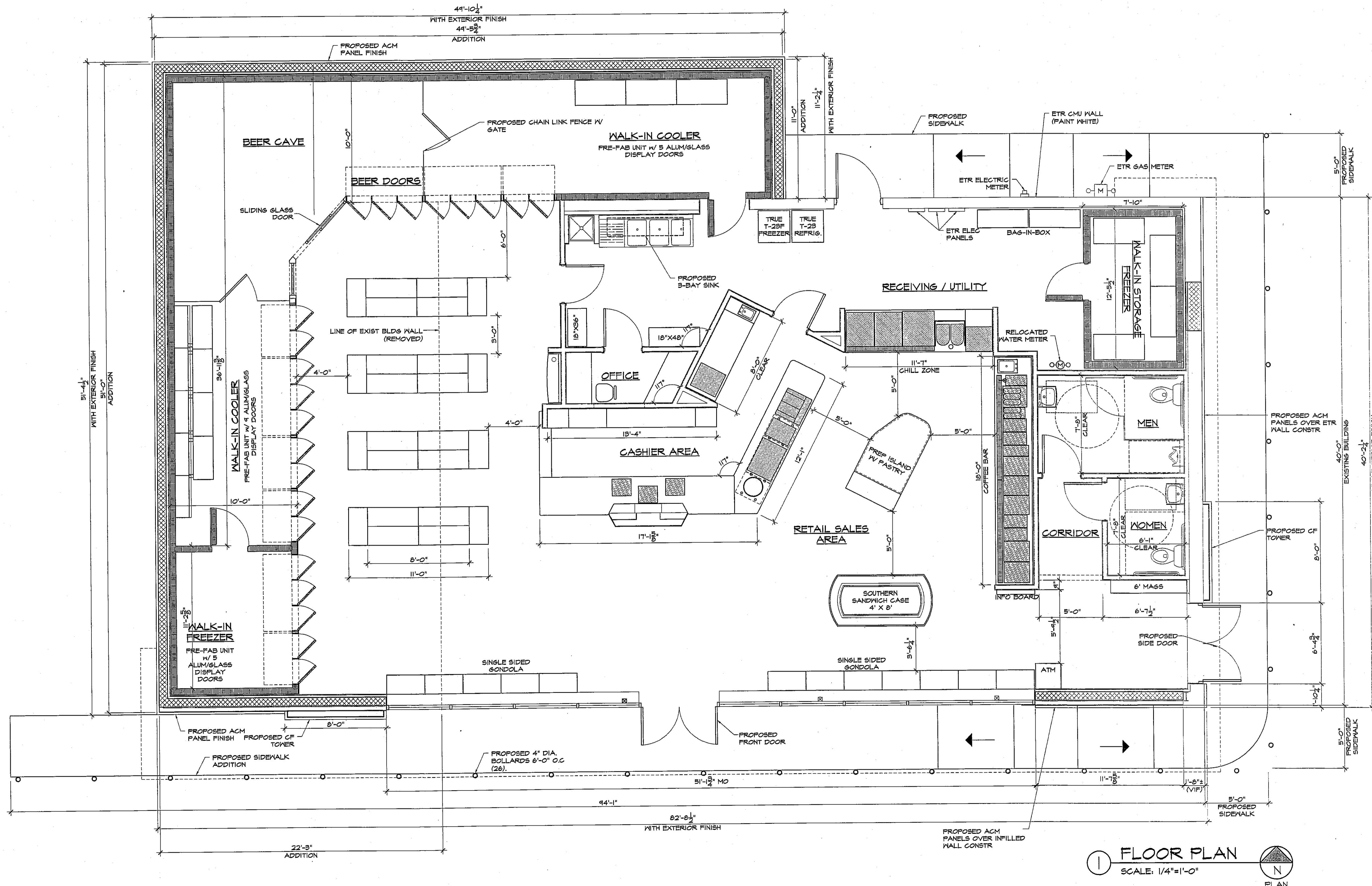
DRAWING TITLE
PROPOSED FLOOR PLAN

DATE: JULY 18, 2011
DRAWN BY: DH/DR
CHECKED BY: AZ

DRAWING NUMBER

A1.1

NOT FOR CONSTRUCTION - NOT FOR CONSTRUCTION - NOT FOR CONSTRUCTION



FLOOR PLAN
SCALE: 1/4"=1'-0"
N
PLAN

© AHARONIAN & ASSOCIATES INC 2011

DONT USE FOR CONST
MHF PROJECT NO. 266609 SHEET 8 OF 11