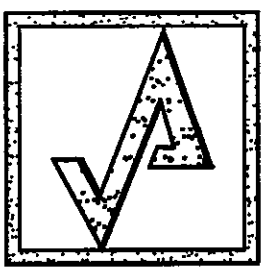
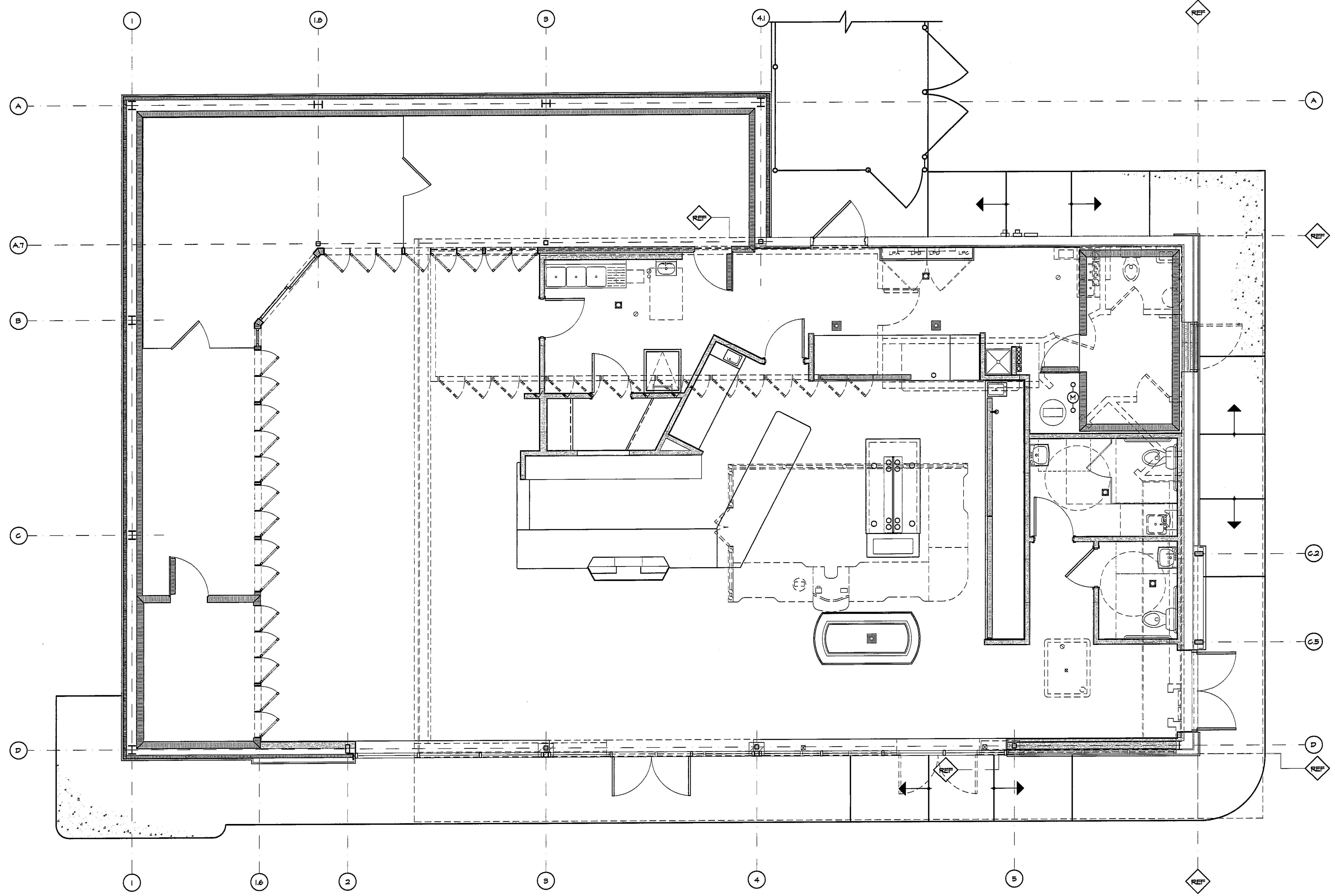


LEGEND

--- TO BE REMOVED

== NEW WALL



**AHARONIAN
& ASSOCIATES INC.
ARCHITECTS**

310 George Washington Highway
Suite 100
Smithfield, Rhode Island
0 2 9 1 7

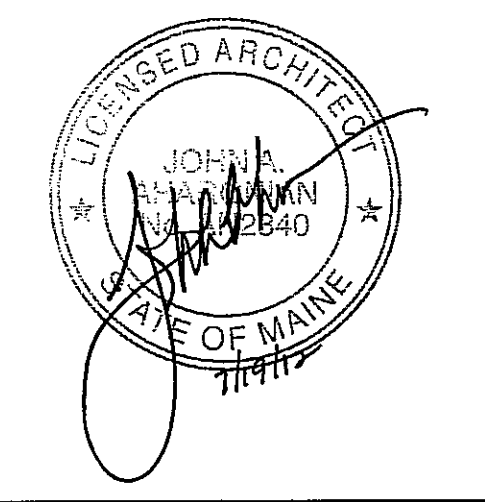
T 401-232-5010
F 401-232-5080
WWW.ARCH-ENG.COM

DISCLAIMER

OWNERSHIP AND USE OF DOCUMENTS, DRAWINGS AND SPECIFICATIONS ARE INSTRUMENTS OF PROFESSIONAL SERVICE AND SHALL REMAIN THE PROPERTY OF THE ARCHITECT. THESE DOCUMENTS ARE NOT TO BE USED, IN WHOLE OR IN PART, FOR ANY OTHER PROJECTS OR PURPOSES OR BY ANY OTHER PARTIES THAN THOSE PROPERLY AUTHORIZED BY CONTRACT WITHOUT THE EXPRESS WRITTEN AUTHORIZATION OF THE ARCHITECT.

REVISIONS

NUMBER	REMARKS	DATE



FOR CONSTRUCTION

PROJECT TITLE

**Cumberland
FARMS**

100 Crossing Blvd, Framingham, Massachusetts
STORE # 5604
V1079

**801 WASHINGTON AVE
PORTLAND, ME
Cumberland County**

DRAWING TITLE

**DEMOLITION/NEW
WORK OVERLAY PLAN**

DATE JULY 19, 2012	PROJ NO 11112
DRAWN BY JL	CHECKED BY AZ

DRAWING NUMBER

A0.3

1 OVERLAY PLAN
SCALE: 1/4" = 1'-0"

N
PLAN