



AHARONIAN & ASSOCIATES INC.  
ARCHITECTS

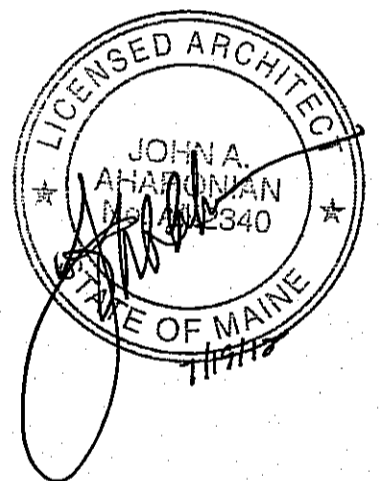
310 George Washington Highway  
Suite 100  
Smithfield, Rhode Island  
02917  
T 401-232-5010  
F 401-232-5080  
WWW.ARCH-ENG.COM

DISCLAIMER

OWNERSHIP AND USE OF DOCUMENTS, DRAWINGS AND SPECIFICATIONS ARE INSTRUMENTS OF PROFESSIONAL SERVICE AND SHALL REMAIN THE PROPERTY OF THE ARCHITECT. THESE DOCUMENTS ARE NOT TO BE USED, IN WHOLE OR IN PART, FOR ANY OTHER PROJECTS OR PURPOSES OR BY ANY OTHER PARTIES THAN THOSE PROPERLY AUTHORIZED BY CONTRACT WITHOUT THE EXPRESS WRITTEN AUTHORIZATION OF THE ARCHITECT.

REVISIONS

NUMBER	REMARKS	DATE



FOR CONSTRUCTION

PROJECT TITLE

**Cumberland FARM S**  
100 Crossing Blvd, Framingham, Massachusetts  
STORE # 5604  
V1079

801 WASHINGTON AVE  
PORTLAND, ME  
Cumberland County

DRAWING TITLE

BUILDING RELATED  
SITE DETAILS

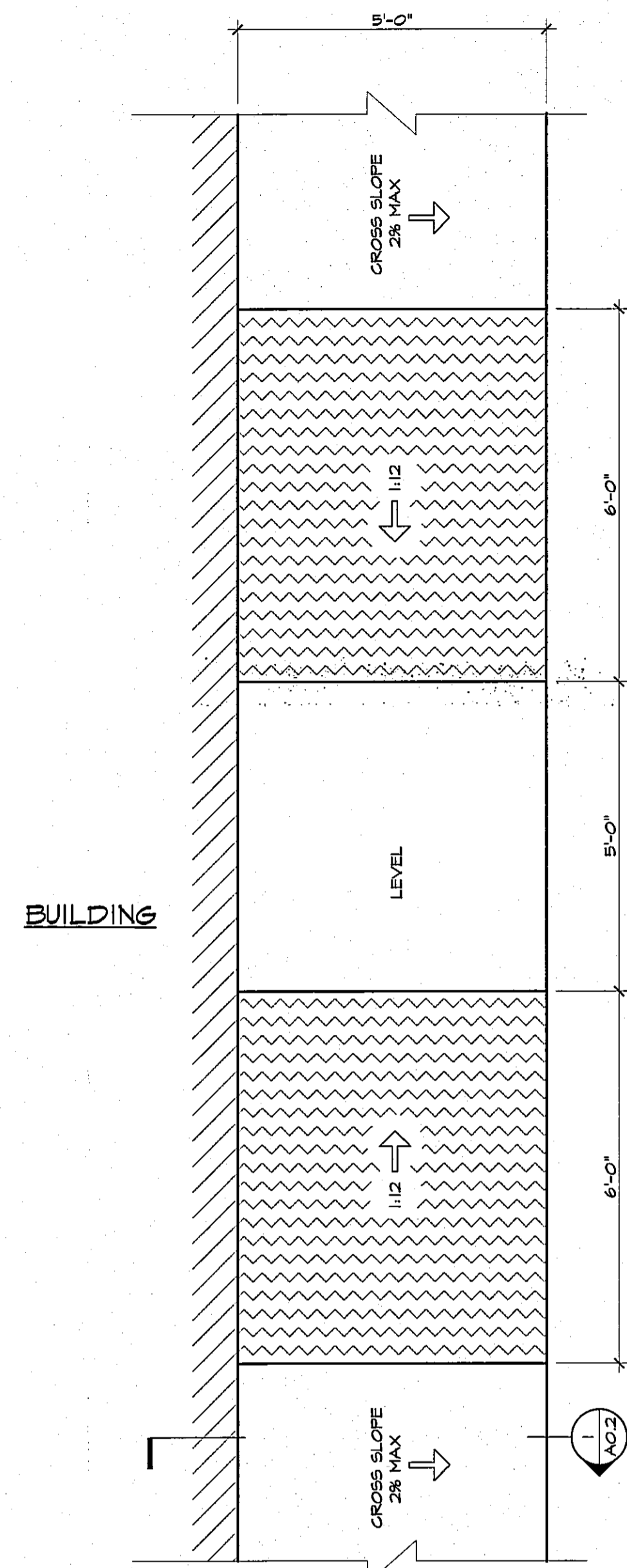
DATE JULY 19, 2012	PROJ NO 11112
DRAWN BY JL	CHECKED BY AZ

DRAWING NUMBER

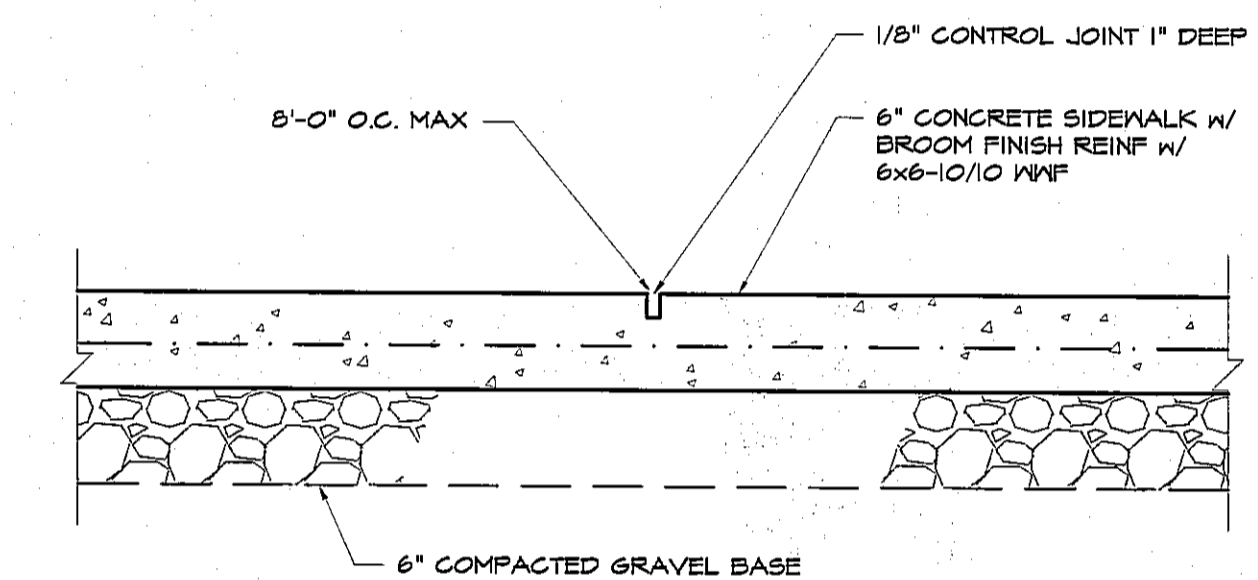
A0.2

GENERAL NOTES

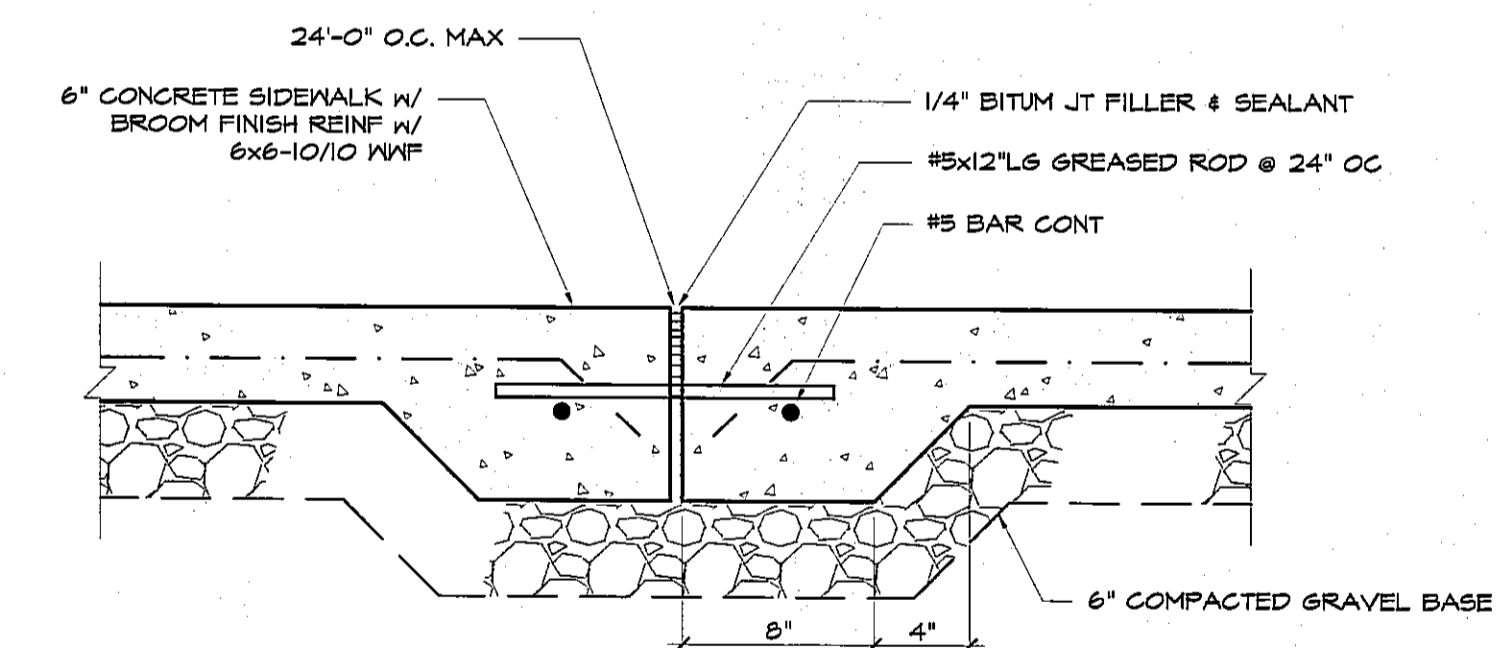
- 1) CONCRETE SHALL HAVE A MINIMUM 28-DAY COMPRESSIVE STRENGTH OF 4000 PSI FOR EXTERIOR WALKS.
- 2) ALL CONCRETE SHALL BE AIR-ENTRAINED.
- 3) CONCRETE SHALL BE CURED FOR A MINIMUM OF SEVEN DAYS BEFORE ANY LOADS ARE APPLIED THERETO.
- 4) CONSTRUCTION JOINTS SHALL BE PLACED AS SHOWN ON THE DRAWINGS.
- 5) CONCRETE SHALL BE PLACED SO THAT SLAB THICKNESS IS AT NO POINT LESS THAN THAT INDICATED ON DRAWINGS.
- 6) PROVIDE A BROOM FINISH ON EXTERIOR WALKS.



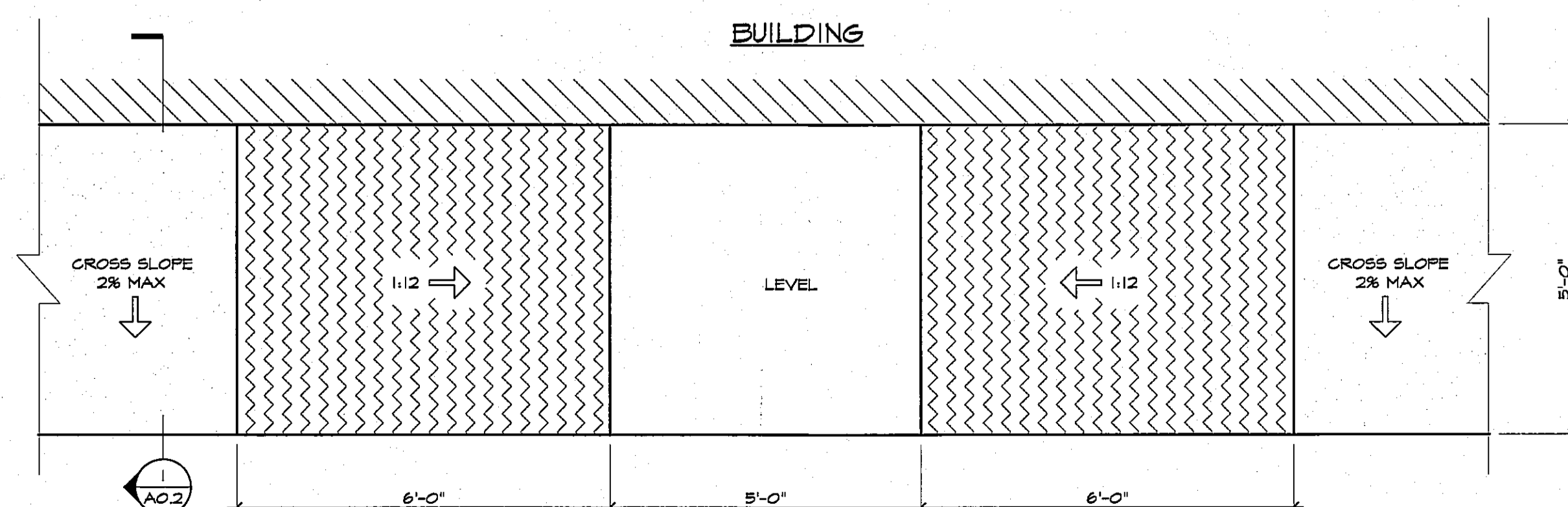
5 HANDICAP RAMP DETAIL  
A1.1 SCALE: 1/2" = 1'-0"



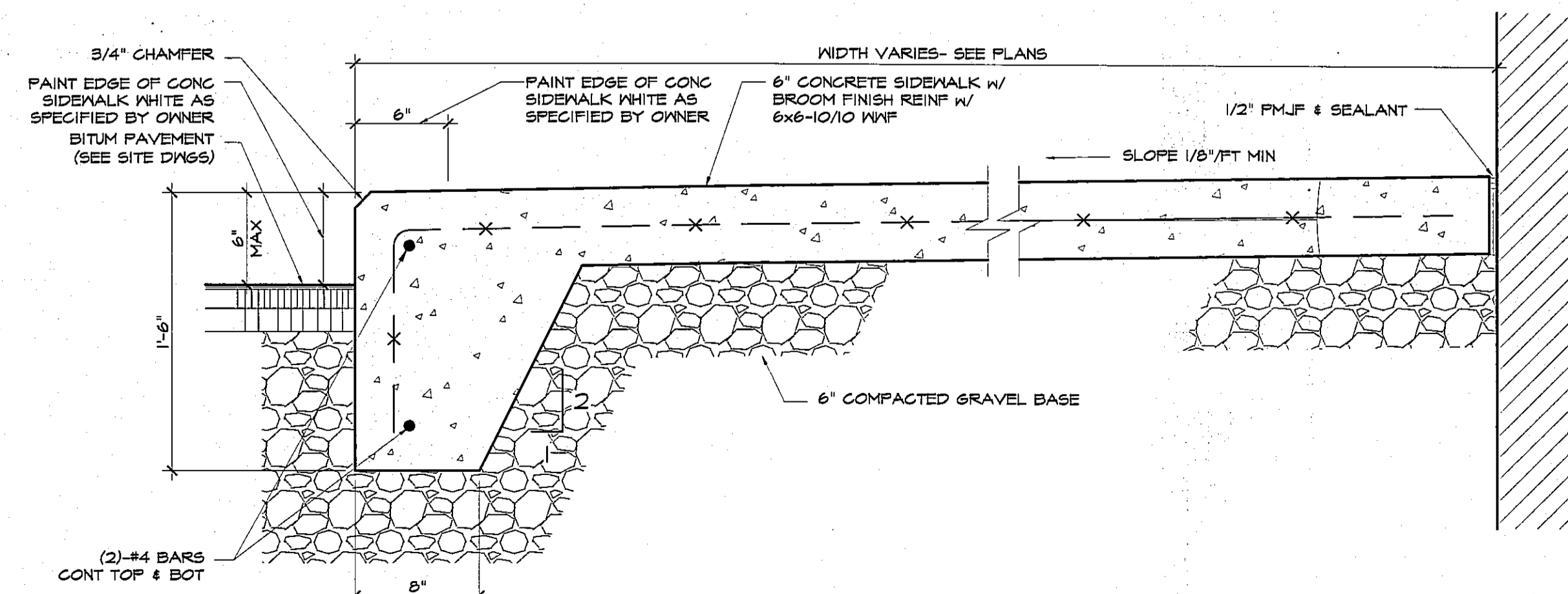
3 TYP CONTROL JOINT DETAIL  
A0.2 SCALE: 1/2" = 1'-0"



2 TYP EXPANSION JOINT DETAIL  
A0.2 SCALE: 1/2" = 1'-0"



4 HANDICAP RAMP DETAIL  
A1.1 SCALE: 1/2" = 1'-0"



1 TYP CONG WALK DETAIL  
A0.2 SCALE: 1/2" = 1'-0"