



AHARONIAN & ASSOCIATES INC.
ARCHITECTS
 WARE LICENSED ARCHITECT
 210 George Washington Highway
 Suite 100
 Southfield, Rhode Island
 0 2 8 1 7
 T 401-222-8810
 F 401-222-2118
 WWW.ARCH-DEN.COM

DISCLAIMER

OWNERSHIP AND USE OF DOCUMENTS, DRAWINGS AND SPECIFICATIONS ARE RESTRICTED TO PROFESSIONAL SERVICE AND SHALL REMAIN THE PROPERTY OF THE ARCHITECT. THESE DOCUMENTS ARE NOT TO BE USED IN FULL OR IN PART FOR ANY OTHER PROJECTS OR PURPOSES OR BY ANY OTHER PARTY WITHOUT THE EXPRESS WRITTEN AUTHORIZATION OF THE ARCHITECT.

REVISIONS

NUMBER	REMARKS	DATE



FOR CONSTRUCTION

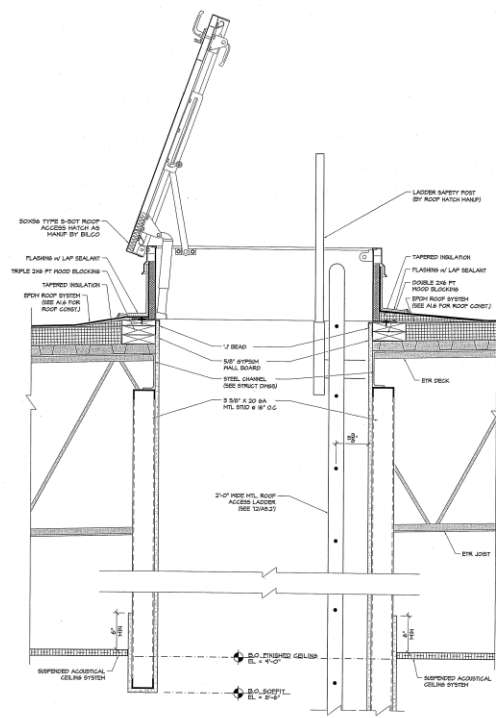
PROJECT TITLE
Cumberland
 F A R M S
 100 Crosby Rd., Frothingham, Massachusetts
 STORE # 5804
 V1079

801 WASHINGTON AVE
PORTLAND, ME
 Cumberland County

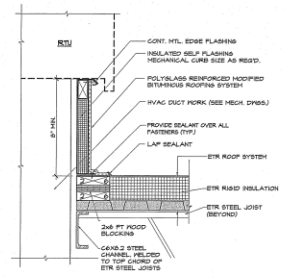
ROOF DETAILS

DATE MAY 10, 2015	PROJ NO 11112
DRAWN BY BB	CHECKED BY AZ

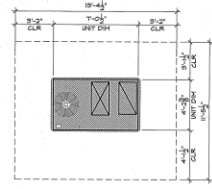
DRAWING NUMBER
A1.6a



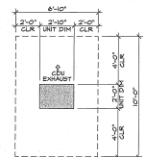
(2) ROOF HATCH DETAIL
 SCALE: 1/2" = 1'-0"



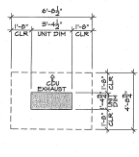
(1) RTU CURB DETAIL
 SCALE: 1/2" = 1'-0"



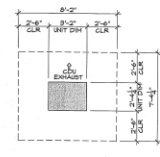
(5) RTU CLEARANCE DETAIL
 SCALE: 3/4" = 1'-0"



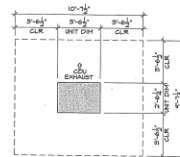
(4) SODA / ICE DISPENSER CDU CLEARANCE DETAIL
 SCALE: 3/4" = 1'-0"



(3) SANDWICH COOLER CDU CLEARANCE DETAIL
 SCALE: 3/4" = 1'-0"



(2) FBD CDU CLEARANCE DETAIL
 SCALE: 3/4" = 1'-0"



(1) COOLER/FREEZER CDU CLEARANCE DETAIL
 SCALE: 3/4" = 1'-0"

© AHARONIAN & ASSOCIATES INC. 2015