

TYPICAL ROOF CONSTRUCTION
ARCH. ASPHALT SHINGLES
ICE AND WATER SHIELD ENTIRE ROOF
5/8" ROOF SHEATHING
ROOF FRAMING (SEE FRAMING PLAN)
INSULATION (R49)
STRAPPING
5/8" G.W.B.

TYPICAL WALL CONSTRUCTION
CEDAR SHINGLES 5" → EXPOSURE
RAINSCREEN
HOUSEWRAP
1/2" EXTERIOR SHEATHING
2X8 STUD WALL
INSULATION (R20)
1/2" G.W.B.
SEALANT OR ADHESIVE
SEALANT AT CORNER OF BOTTOM PLATE AND
SUBFLOOR OR GASKET UNDER BOTTOM PLATE
SEALANT OR ADHESIVE

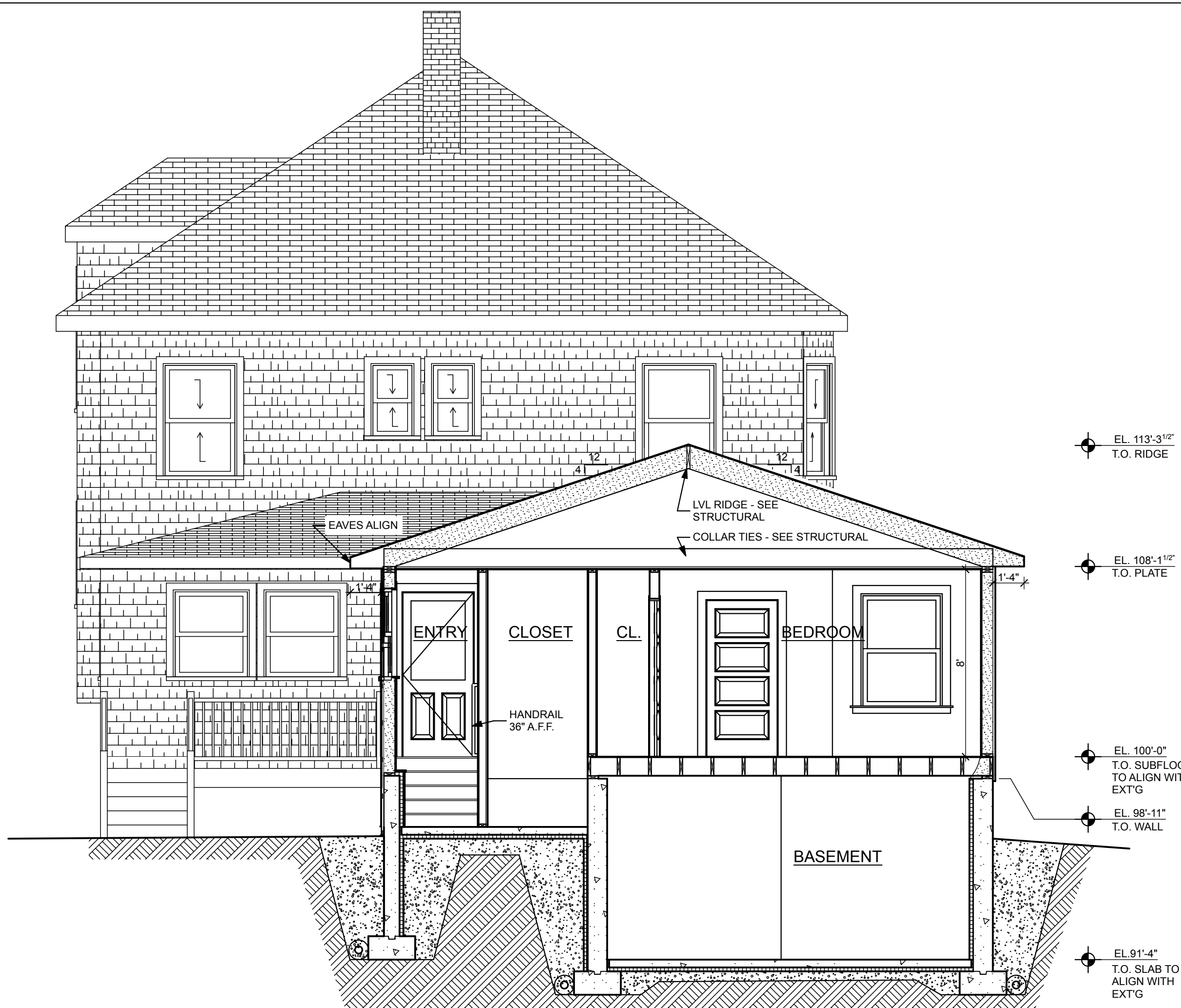
GROUND SLOPES AWAY FROM
BUILDING AT 5% (6" PER 10")
CONTINUOUS BEAD OF SEALANT
SEALING GAP BETWEEN RIGID
INSULATION AND FOUNDATION WALL
(2) COATS ASPHALTIC DAMPPROOFING
BELOW GRADE

2" RIGID INSULATION (R10)
4" CONCRETE SLAB FIBER REINFORCED
ON 2" RIGID INSULATION (R10)

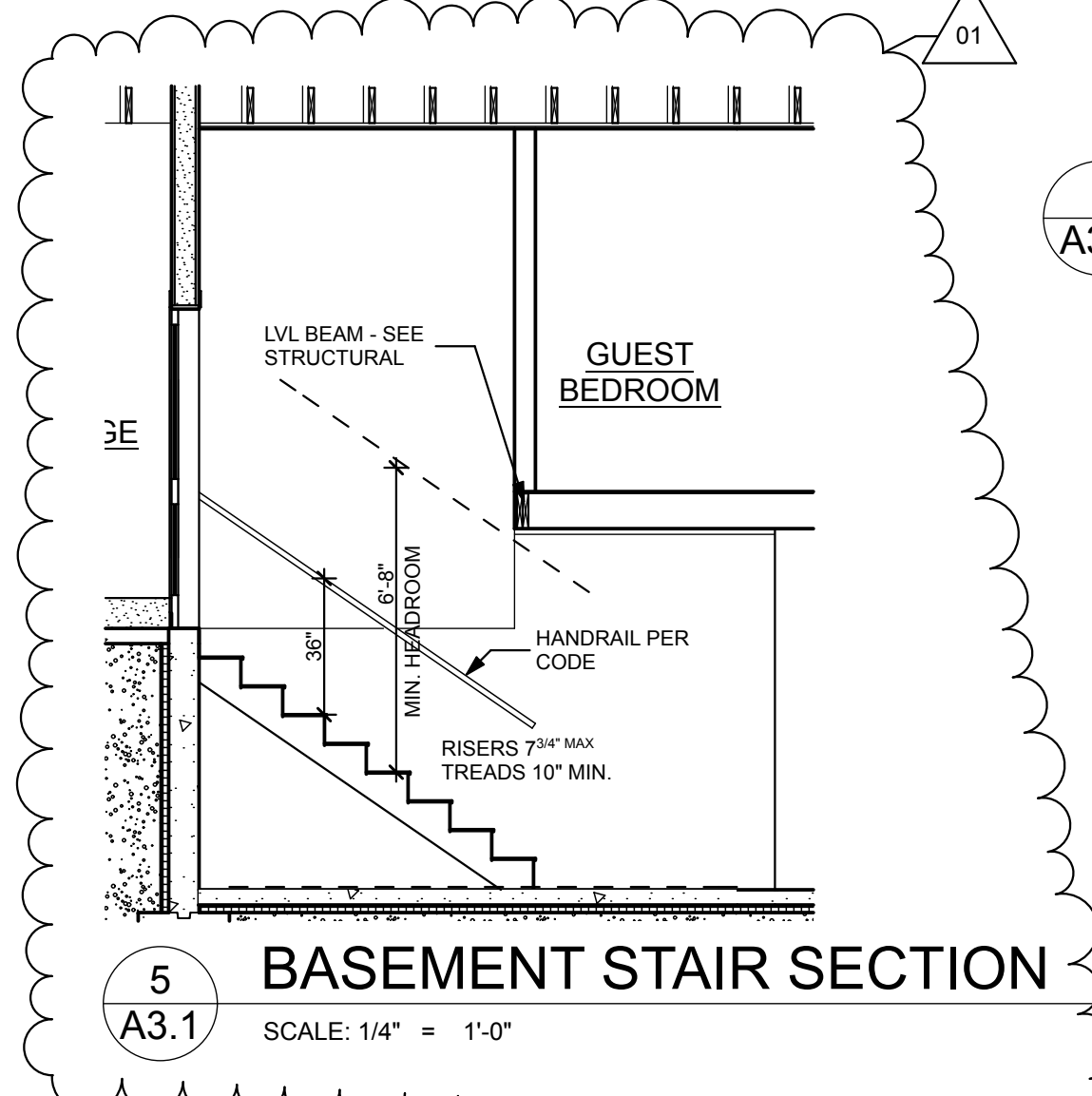
SEALANT
1" RIGID FOAM BOND BREAK
EL. 91'-4"
T.O. SLAB - ALIGN
WITH EXISTING

PERFORATED 4" DIA. HDPE DRAIN PIPE
IN 12" CRUSHED STONE WRAPPED IN
FILTER FABRIC.
DRAINS INSIDE AND OUT. INSIDE DRAIN
TO HAVE OUTLET FOR FUTURE RADON
PIPPING
CAPILLARY BREAK OVER FOOTING
(DAMPPROOFING OR MEMBRANE)

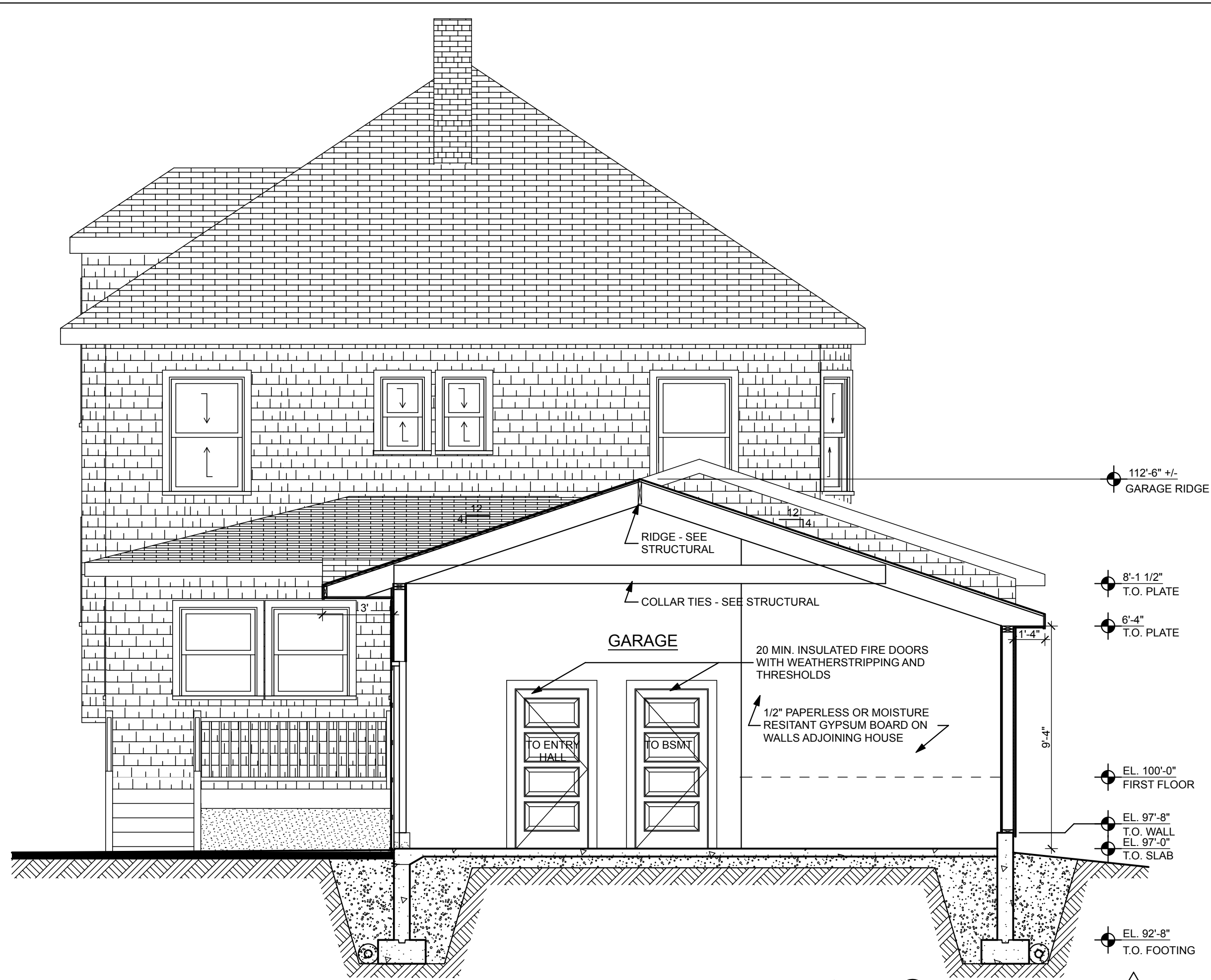
4 WALL SECTION
SCALE: 3/4" = 1'-0"



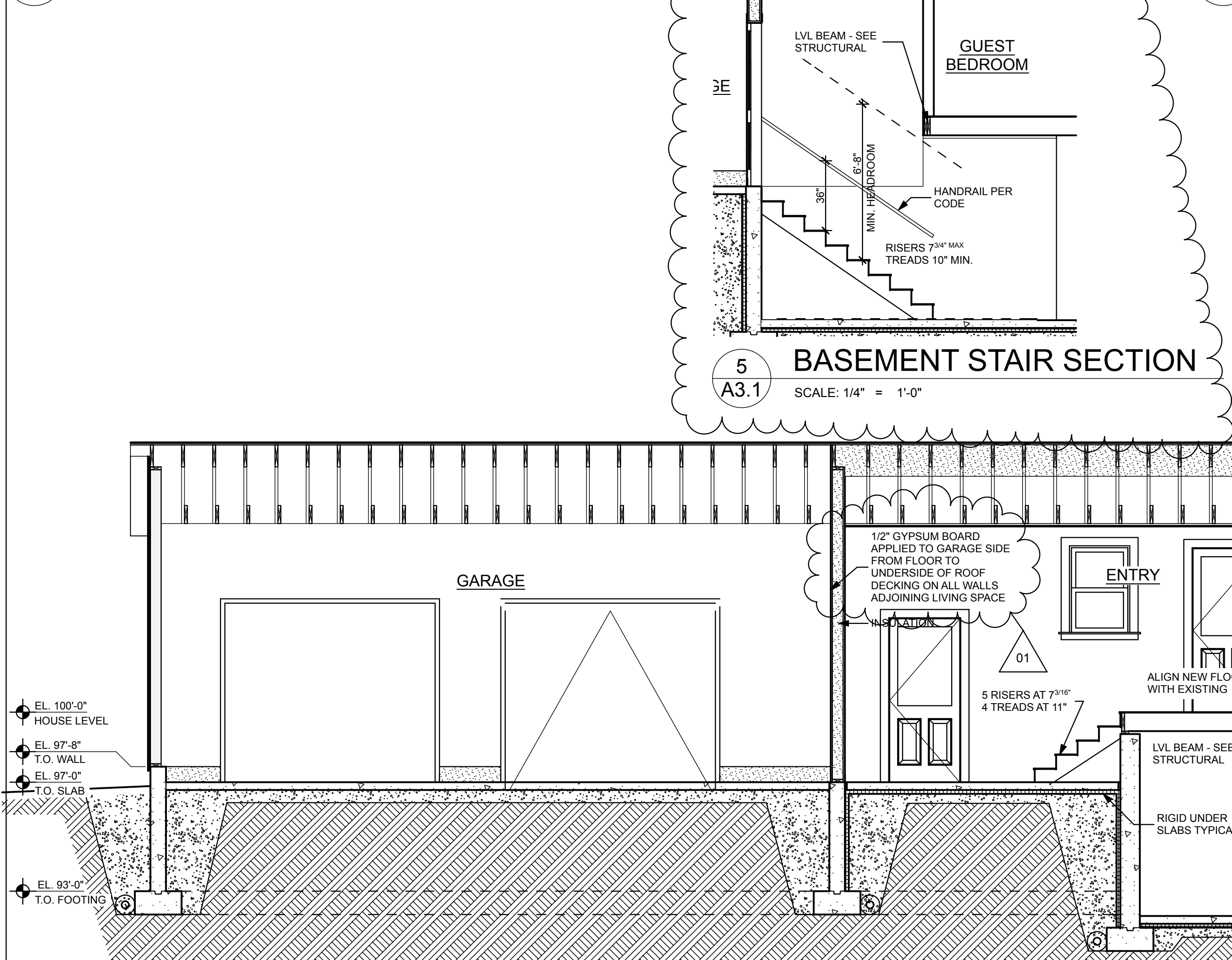
1 SECTION THRU GUEST SUITE
SCALE: 1/4" = 1'-0"



5 BASEMENT STAIR SECTION
SCALE: 1/4" = 1'-0"



2 SECTION THRU GARAGE
SCALE: 1/4" = 1'-0"



3 SECTION THRU HOUSE
SCALE: 1/4" = 1'-0"