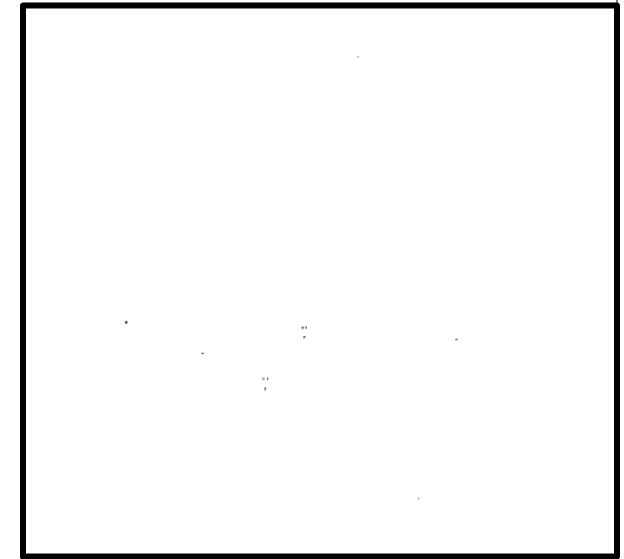
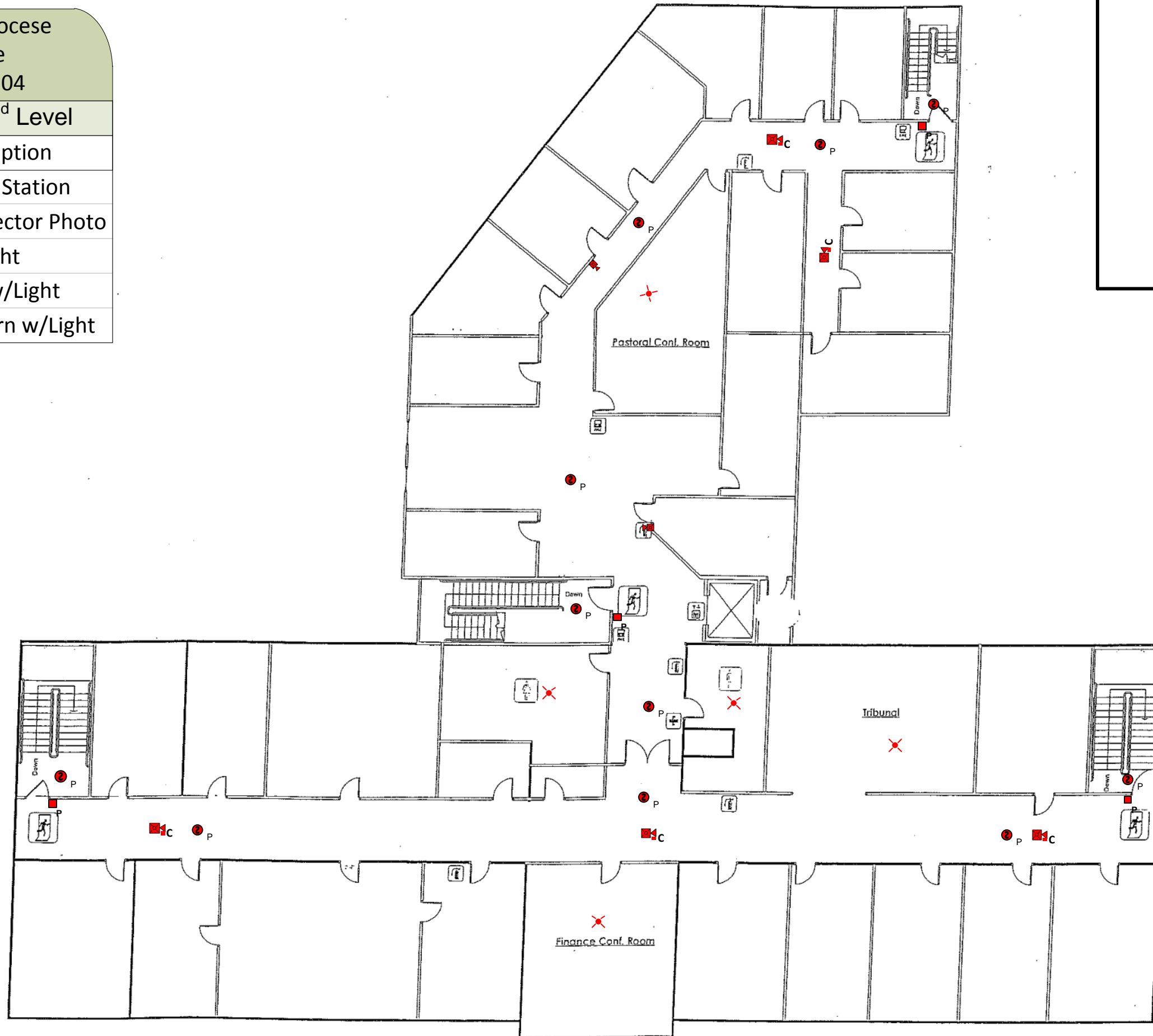


The Roman Catholic Diocese
 510 Ocean Avenue
 Portland, Maine 04104

LS2 Life Safety Plan 2nd Level

Symbol	Count	Description
■ _P	4	Manual Station
● _P	11	Smoke Detector Photo
✕	5	Light
■ _H	3	Horn w/Light
■ _C	6	Ceiling Horn w/Light



Scott Dana; Certified Engineering Technician; NICET IV #116620

10 Manuel Drive Portland, Maine 04103 (508) 922-9572

10/12/15