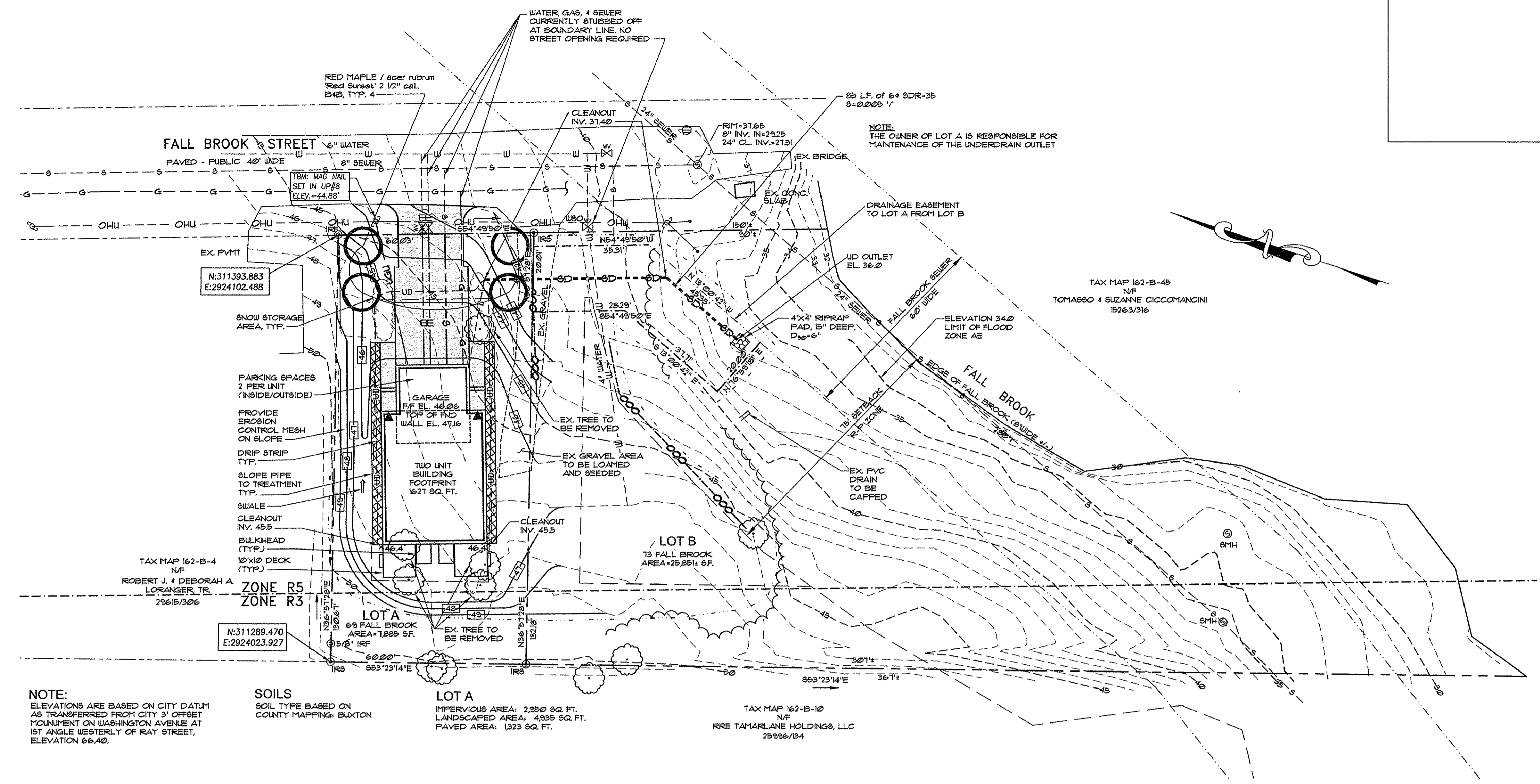


5/25/17

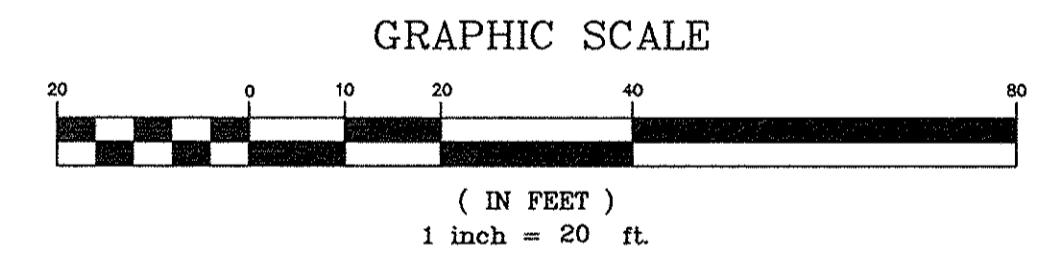


NOTE:
 ELEVATIONS ARE BASED ON CITY DATUM
 AS TRANSFERRED FROM CITY 3' OFFSET
 MONUMENT ON WASHINGTON AVENUE AT
 1ST ANGLE WESTERLY OF RAY STREET,
 ELEVATION 66.40.

SOILS
 SOIL TYPE BASED ON
 COUNTY MAPPING: BUXTON

LOT A
 IMPERVIOUS AREA: 2,350 SQ. FT.
 LANDSCAPED AREA: 4,939 SQ. FT.
 PAVED AREA: 1,323 SQ. FT.

TAX MAP 162-B-10
 N/F
 RRE TAMARLANE HOLDINGS, LLC
 25936/134



LEGEND

EXISTING	PROPOSED
--- PROPERTY LINE	--- EDGE OF PAVEMENT
--- BUILDING SETBACK	--- CONTOURS
--- ADJUTERS PROPERTY	--- BUILDING
--- EASEMENT	--- BUILDING ENTRY/EGRESS
--- EDGE OF PAVEMENT	--- GAS LINE
--- CONTOURS	--- SANITARY SEWER
--- BUILDING	--- STORMDRAIN
--- EDGE OF GRAVEL	--- UNDERGROUND UTILITY
--- ZONING DISTRICT	--- WATER LINE
--- WATERCOURSE	--- FOUNDATION DRAIN
--- FLOODPLAIN	--- DRIPSTRIP W/ UNDERDRAIN
--- SHORELAND ZONE	--- SPOT GRADE
--- GAS LINE	--- SURFACE DRAINAGE
--- SANITARY SEWER	--- RIPRAP
--- OVERHEAD UTILITY	--- BITUMINOUS PAVEMENT
--- WATER LINE	--- EROSION CONTROL BERM
--- GATE VALVE	
--- CATCH BASIN	
--- SEWER MANHOLE	
--- UTILITY POLE	
--- UTILITY POLE W/ GUY WIRE	
--- TREE	
--- TREELINE	
--- IRON PIPE / ROD FOUND	

JOCELYNE DERASPE
 PO BOX 10587
 PORTLAND, ME. 04104

SCALE: AS SHOWN
 DATE: MARCH 2, 2017
 PROJECT: 18170

DRN BY: RJS
 DESG BY: TSG
 CHK BY: JS

69 FALL BROOK STREET
 PORTLAND, ME 04103

**GRADING &
 EROSION CONTROL PLAN**

C1.2