

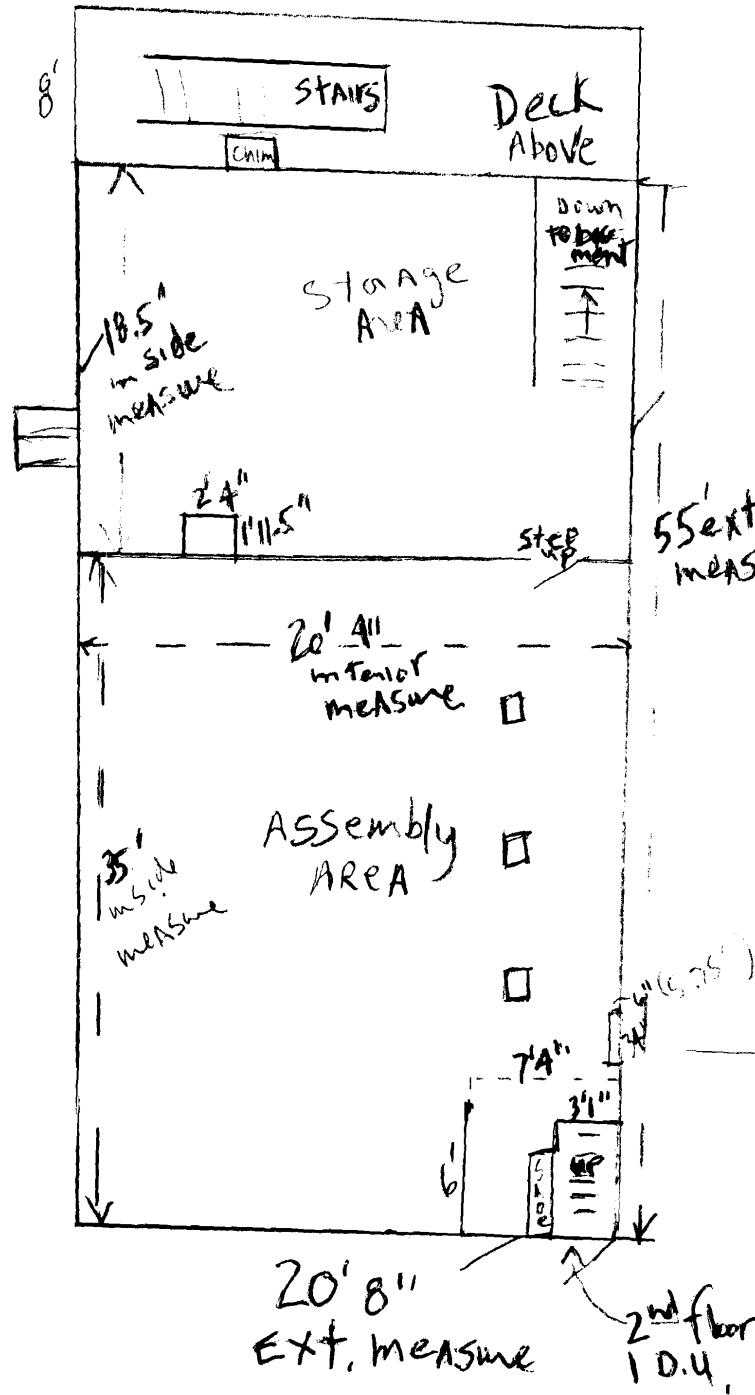
2/11/10
3:00 PM

GARY Wood
ZACH Heiden
TAMMY Magee
Cpt Keith G.
RAMAD Habibzai

Parking CALCS

$664,921 \div 125 = 5.32$ or

6 pkg spaces
rounded up



$20' 4" \times 35' =$
 $20.33 \times 35 = 711.55 \text{ sq}$
 $- 1,164 \text{ sq}$
 $- 1,465 \text{ sq}$
 $- 44 \text{ sq}$

Total Assembly Area = $664,921 \text{ sq}$

Enclosed support
columns - each
1.666 x 10' x 7' x 8'

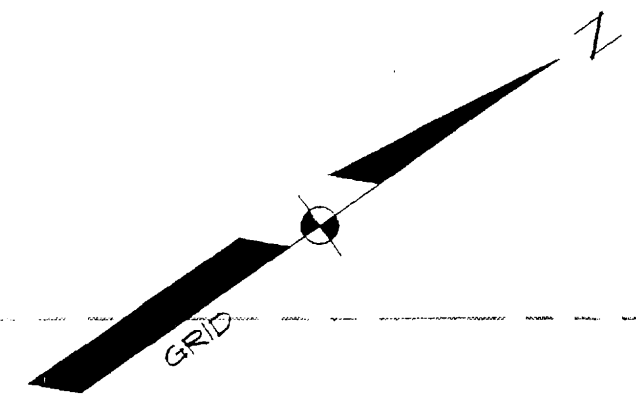
$3(1.589 \times .666) = 1,164 \text{ sq}$
 .388

$.5 \times 2.933 = 1,465 \text{ sq}$
 (Fuse box)

1" = 10'

161-E-003
978 Washington Ave

$6 \times 7' 4" = 43.98 \text{ sq}$
 or
 44 sq



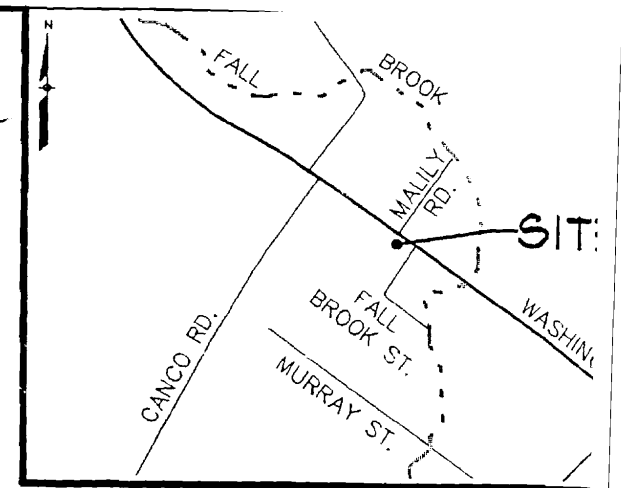
N/F HOPE, SETH R

978 WASHINGTON AVE
161-E-003

2/11/10
measure

1" = 20'

PKg SPACE IS
9' x 19'



LOCATION MAP

UNNAMED STREET
(A.K.A. JILL STREET)

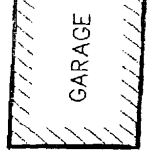
APPROX. ORIGINAL EDGE OF GRAVEL PAVEMENT BASED ON 2006 AERIAL IMAGERY, SEE NOTE 3B. LIMIT OF RESTORED GRAVEL PARKING AREA

REMOVE BITUMINOUS PAVEMENT AND GRAVEL BASE TO NATIVE SOIL. INSTALL 4" OF LOAM AND SEED. MULCH SHALL BE INSTALLED IN ACCORDANCE WITH EROSION CONTROL MEASURES.

FILL IN EXISTING DITCH

N/F TOPPI, ROCO III & MARY M.
17 FALL BROOK ST.

FILTER BARRIER/
SILT FENCE (TYP)



N/F TROIANO, RALPH A & ELEANOR W.
970 WASHINGTON AVE.

MALILY

BENCHMARK
HORIZ. SPK IN UTIL. POLE 133
ELEV. = 61.25 FT

BITUMINOUS PAVEMENT TO REMAIN

SAW CUT PAVEMENT JOINT (TYP)

REMOVE BITUMINOUS PAVEMENT. GRAVEL BASE TO REMAIN, SHIM WITH AS NEEDED TO MATCH GRADES AT EXISTING BRICK SIDEWALK AND PROPOSED GRADES SHOWN.

MATCH EXISTING GRADES (TYP)

EXISTING DITCH TO REMAIN

WASHINGTON AVENUE

