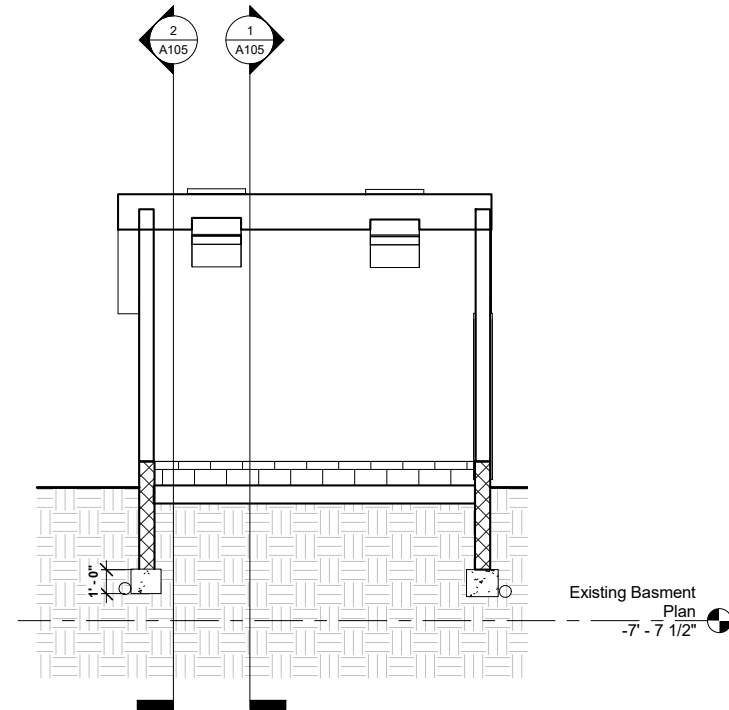
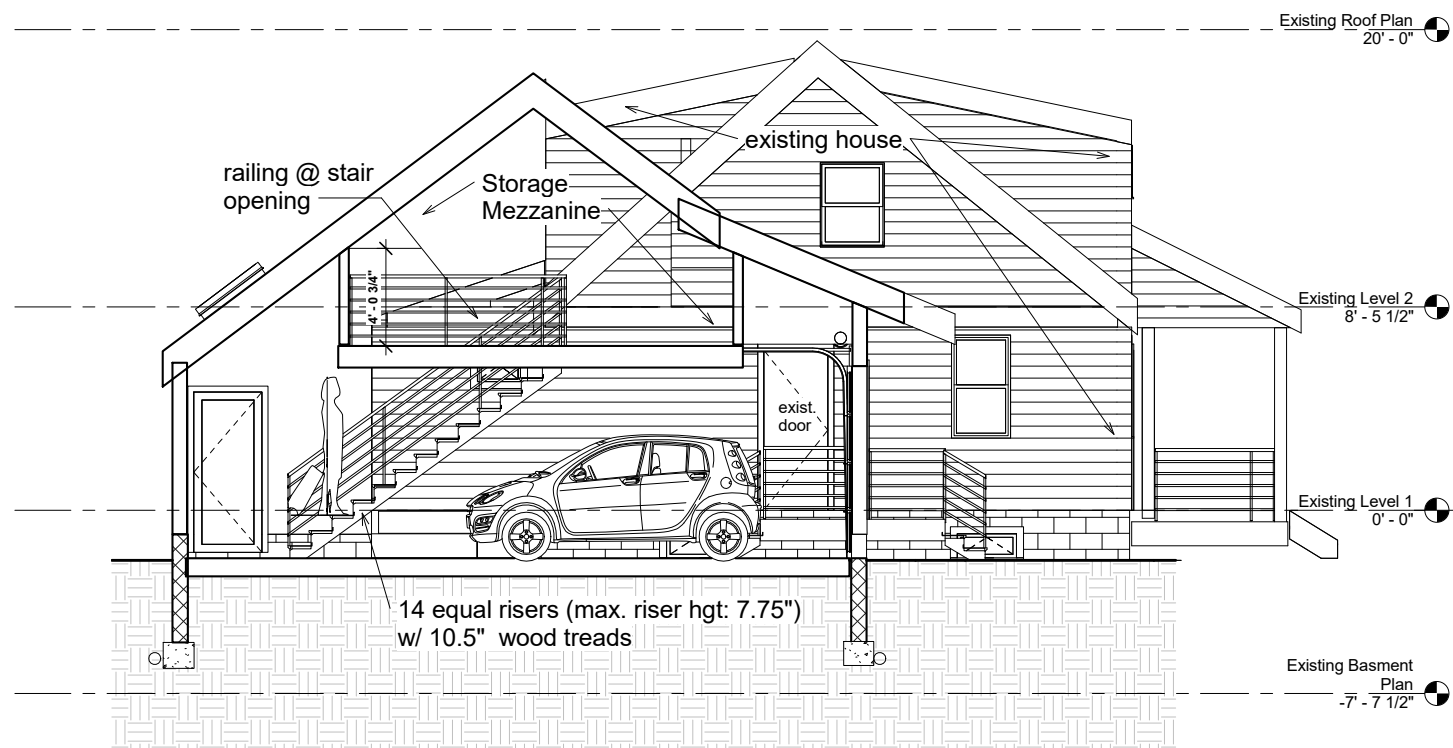


2 Section thru Garage facing south
1/4" = 1'-0"



3 Section thru garage facing east
1/4" = 1'-0"



1 Section thru Garage facing north
1/4" = 1'-0"

drawings revised for reduced width of new garage

Reiter Architecture & Design
 PO Box 275, Brooklyn ME 04616
 tel. 917-502-2225 email: lauren@reiter@yahoo.com
 Consultants

Revision Schedule		
Revision Number	Revision Description	Revision Date
For Filing & Construction		7/25/16
1	Revision 1	Date 1
For Filing & Construction		rev. 8/03/16

G. IRVINE HOUSE
PROPOSED NEW GARAGE
 9 Kineo Street
 Portland, Maine 04101

Proposed Garage Sections	
Project number	Portland, Maine 04101
Date	Issue Date
Drawn by	Author
Checked by	Checker
A105	
Scale	1/4" = 1'-0"