

**HOOD INFORMATION - Job#1846625**

HOOD NO.	TAG	MODEL	LENGTH	MAX. COOKING TEMP.	EXHAUST PLENUM RISER(S)						TOTAL SUPPLY CFM	HOOD CONSTRUCTION	HOOD CONFIG.	
					TOTAL EXH. CFM	WIDTH	LENG.	DIA.	CFM	S.P.			END TO END	ROW
1		5412 SND-2-PSP-F	13' 0.00'	600 Deg.	3250			14"	1625	-0.421'	2275	430 SS 100%	ALONE	ALONE

**HOOD INFORMATION**

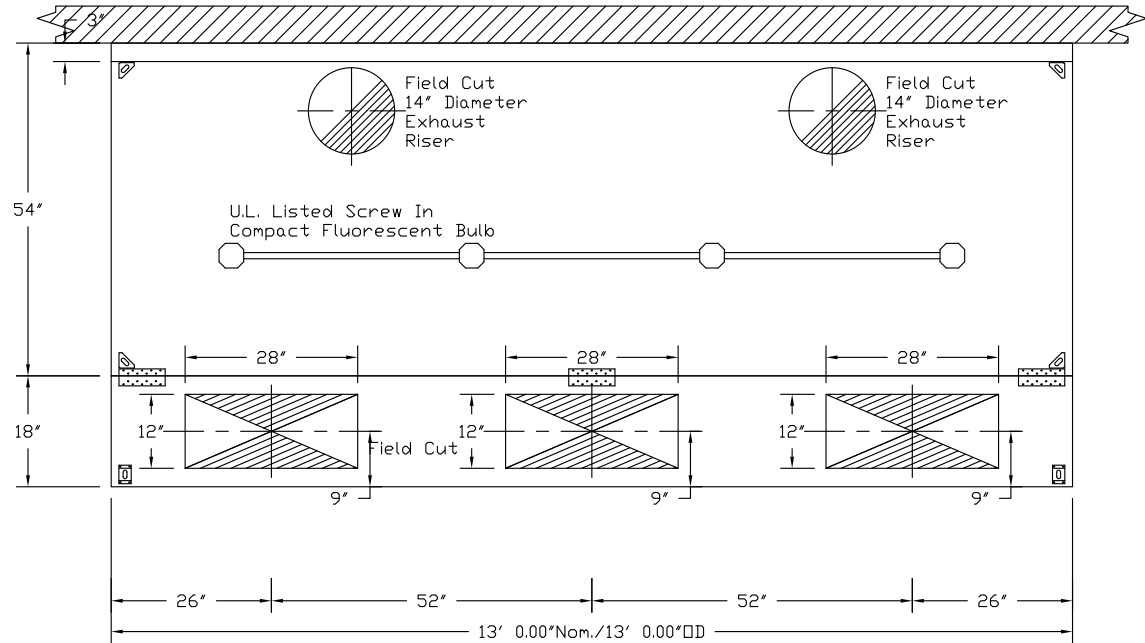
HOOD NO.	TAG	FILTER(S)				LIGHT(S)			LOCATION	UTILITY CABINET(S)			FIRE SYSTEM PIPING	HOOD HANGING WGT
		TYPE	QTY.	HEIGHT	LENGTH	QTY.	TYPE	WIRE GUARD		FIRE SYSTEM TYPE	SIZE	ELECTRICAL MODEL #		
1		SS Baffle with Handles	1 7	16" 16"	16" 20"	4	Screw In Compact	NO					NO	588 LBS

**HOOD OPTIONS**

HOOD NO.	TAG	OPTION
1		RIGHT QUARTER END PANEL 23' Top Width, 0' Bottom Width, 23' High 430 SS
		LEFT QUARTER END PANEL 23' Top Width, 0' Bottom Width, 23' High 430 SS

**PERFORATED SUPPLY PLENUM(S)**

HOOD NO.	TAG	POS.	LENGTH	WIDTH	HEIGHT	TYPE	RISER(S)				
							WIDTH	LENG.	DIA.	CFM	S.P.
1		Front	156'	18"	6"	MUA	12"	28"		758	0.215'
						MUA	12"	28"		758	0.215'
						MUA	12"	28"		758	0.215'



**PLAN VIEW - Hood #1**

**13' 0.00" LONG 5412SND-2-PSP-F**

NOTE: Additional hanging angles provided for hoods 12' and longer.

CUSTOMER APPROVAL TO MANUFACTURE:

Approved as Noted

Approved with NO Exception Taken

Revise and Resubmit

SIGNATURE \_\_\_\_\_

Your Title \_\_\_\_\_ Date \_\_\_\_\_



JOB Our Lady of Hope

LOCATION SCARBOROUGH, ME

DATE 10/17/2013

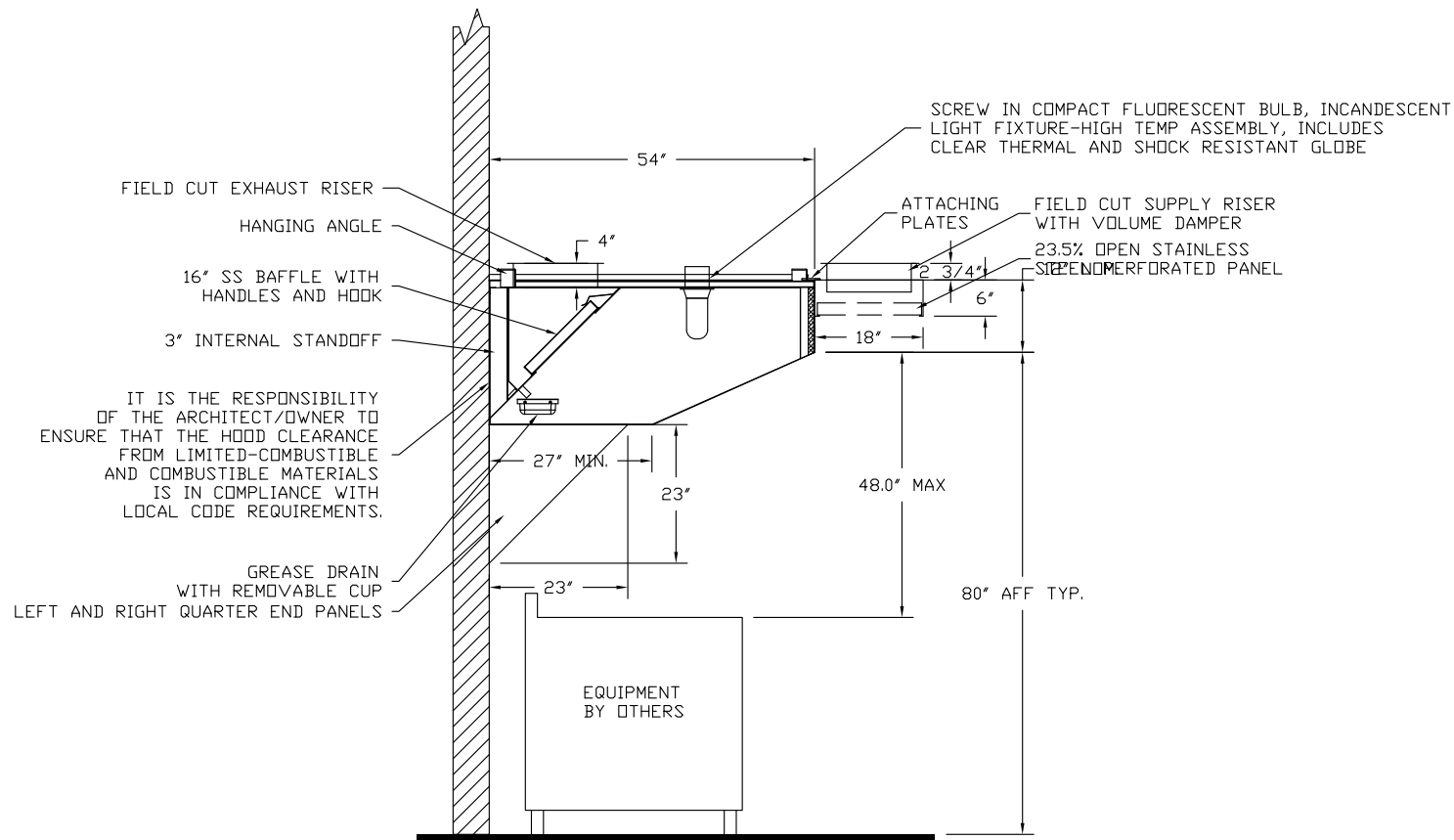
JOB # 1846625

DWG # 1

DRAWN BY BFC-21

REV.

SCALE 3/8" = 1'-0"



SECTION VIEW - MODEL 5412SND-2-PSP-F  
HOOD - #1

CUSTOMER APPROVAL TO MANUFACTURE:

- Approved as Noted
- Approved with NO Exception Taken
- Revise and Resubmit

SIGNATURE \_\_\_\_\_

Your Title \_\_\_\_\_ Date \_\_\_\_\_



**CAPTIVEAIRE**

JOB Our Lady of Hope	
LOCATION SCARBOROUGH, ME	
DATE 10/17/2013	JOB # 1846625
DWG # 2	DRAWN BY BFC-21
REV.	SCALE 3/8" = 1'-0"

**EXHAUST FAN INFORMATION - Job#1846625**

FAN UNIT NO.	TAG	FAN UNIT MODEL #	CFM	ESP.	RPM	H.P.	Ø	VOLT	FLA	WEIGHT (LBS.)	SONES
1		NCA16FA	3250	1.500	1231	2.000	1	230	12.5	206	16.6

**MUA FAN INFORMATION - Job#1846625**

FAN UNIT NO.	TAG	FAN UNIT MODEL #	BLOWER	HOUSING	CFM	ESP.	RPM	H.P.	Ø	VOLT	FLA	WEIGHT (LBS.)	SONES
2		A1-G10	G10	A1	2275	0.500	850	1.500	1	230	10.2	259	17.2

**FAN OPTIONS**

FAN UNIT NO.	TAG	OPTION (Qty. - Descr.)
1		1 - Grease Box
		1 - Fan Base Ceramic Seal - For Grease Ducts
2		1 - Gravity Backdraft Damper For Size 1 Housing

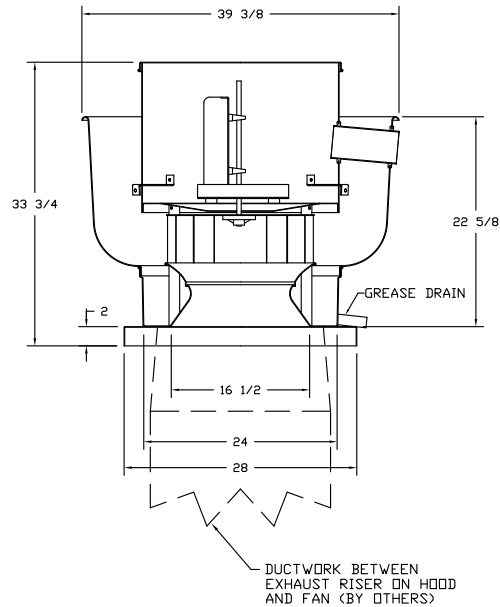
**CURB ASSEMBLIES**

NO.	ON FAN	WEIGHT	ITEM	SIZE
1	# 1	41 LBS	Curb	26.500"W x 26.500"L x 20.000"H 1.000:12.000 Pitch Vented Hinged
2	# 2	29 LBS	Curb	21.000"W x 21.000"L x 20.000"H 1.000:12.000 Pitch

**FAN ACCESSORIES**

FAN UNIT NO.	TAG	EXHAUST				SUPPLY			
		GREASE CUP	GRAVITY DAMPER	WALL MOUNT	SIDE DISCHARGE	GRAVITY DAMPER	MOTORIZED DAMPER	WALL MOUNT	
1		YES							
2						YES			

FAN #1 NCA16FA - EXHAUST FAN



**FEATURES:**

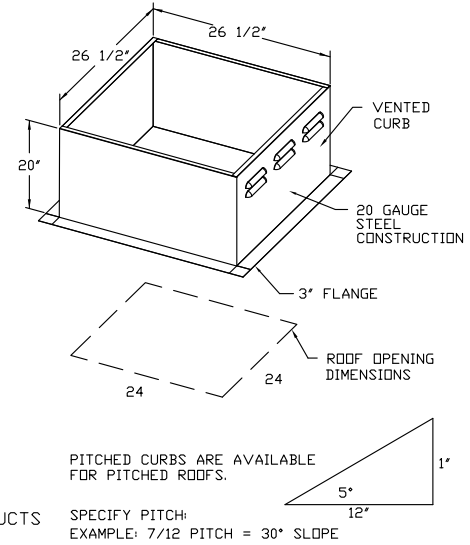
- ROOF MOUNTED FANS
- RESTAURANT MODEL
- UL705 AND UL762
- AMCA SOUND AND AIR CERTIFIED
- WIRING FROM MOTOR TO DISCONNECT SWITCH
- WEATHERPROOF DISCONNECT
- HIGH HEAT OPERATION 300°F (149°C)
- GREASE CLASSIFICATION TESTING

**NORMAL TEMPERATURE TEST**  
EXHAUST FAN MUST OPERATE CONTINUOUSLY WHILE EXHAUSTING AIR AT 300°F (149°C) UNTIL ALL FAN PARTS HAVE REACHED THERMAL EQUILIBRIUM, AND WITHOUT ANY DETERIORATING EFFECTS TO THE FAN WHICH WOULD CAUSE UNSAFE OPERATION.

**ABNORMAL FLARE-UP TEST**  
EXHAUST FAN MUST OPERATE CONTINUOUSLY WHILE EXHAUSTING BURNING GREASE VAPORS AT 600°F (316°C) FOR A PERIOD OF 15 MINUTES WITHOUT THE FAN BECOMING DAMAGED TO ANY EXTENT THAT COULD CAUSE AN UNSAFE CONDITION.

**OPTIONS**

- GREASE BOX
- FAN BASE CERAMIC SEAL - FOR GREASE DUCTS



PITCHED CURBS ARE AVAILABLE FOR PITCHED ROOFS.

SPECIFY PITCH:  
EXAMPLE: 7/12 PITCH = 30° SLOPE

**CUSTOMER APPROVAL TO MANUFACTURE:**

Approved as Noted

Approved with NO Exception Taken

Revise and Resubmit

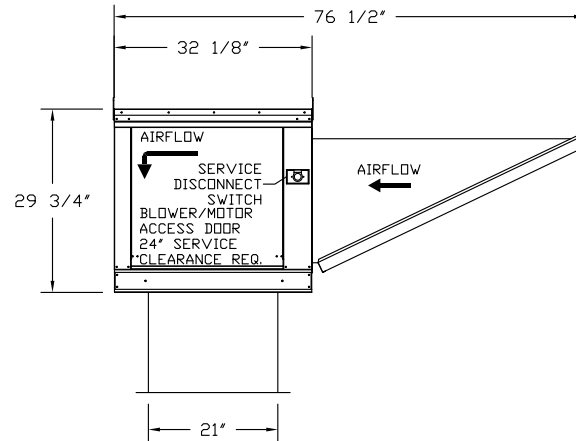
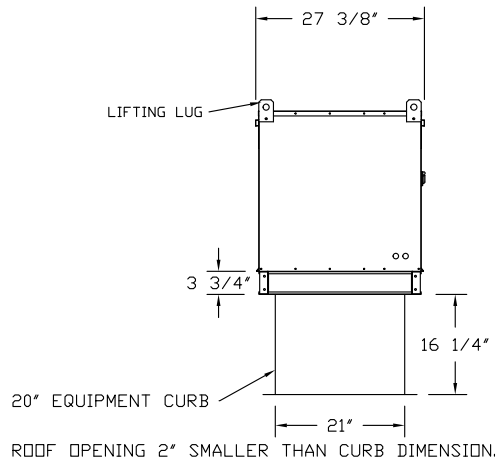
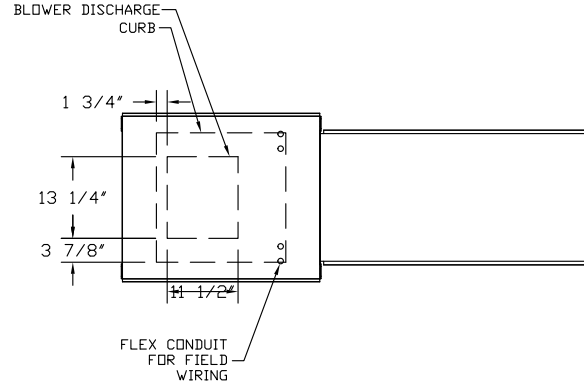
SIGNATURE \_\_\_\_\_

Your Title \_\_\_\_\_ Date \_\_\_\_\_



JOB Our Lady of Hope	
LOCATION SCARBOROUGH, ME	
DATE 10/17/2013	JOB # 1846625
DWG # 3	DRAWN BY BFC-21
REV.	SCALE 3/8" = 1'-0"

- FAN #2 A1-G10 - SUPPLY FAN  
 1. UNTEMPERED SUPPLY UNIT WITH 10" BLOWER IN SIZE #1 HOUSING  
 2. INTAKE HOOD WITH EZ FILTERS  
 3. DOWN DISCHARGE - AIR FLOW RIGHT -> LEFT  
 4. GRAVITY BACK DRAFT DAMPER, 16" WIDE X 18" HIGH, STANDARD GALVANIZED CONSTRUCTION, 1 1/4" REAR FLANGE, FOR SIZE 1 UNTEMPERED FAN HOUSING (5181)



PITCHED CURBS ARE AVAILABLE FOR PITCHED ROOFS.

SPECIFY PITCH:  
 EXAMPLE: 7/12 PITCH = 30° SLOPE

CUSTOMER APPROVAL TO MANUFACTURE:

Approved as Noted

Approved with NO Exception Taken

Revise and Resubmit

SIGNATURE \_\_\_\_\_

Your Title \_\_\_\_\_ Date \_\_\_\_\_

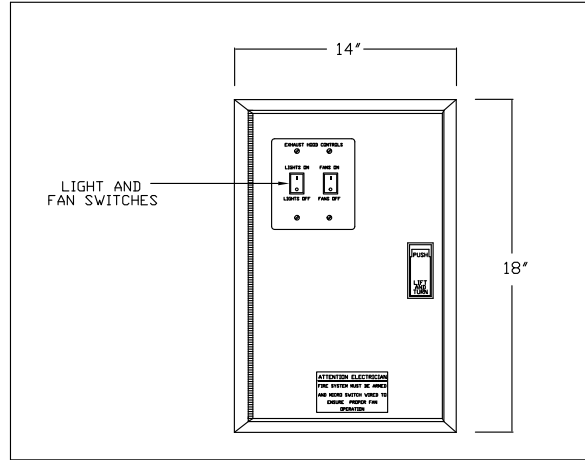


JOB Our Lady of Hope	
LOCATION SCARBOROUGH, ME	
DATE 10/17/2013	JOB # 1846625
DWG # 4	DRAWN BY BFC-21
REV.	SCALE 3/8" = 1'-0"

**ELECTRICAL PACKAGES - Job#1846625**

NO.	TAG	PACKAGE #	LOCATION	SWITCHES		OPTION	FANS CONTROLLED				
				LOCATION	QUANTITY		TYPE	Ø	H.P.	VOLT	FLA
1		21111002	Wall Mount In SS Box	SS Wall Mount Box	1 Light 1 Fan	Exhaust in Fire	Exhaust	1	2.000	230	12.5
							Supply	1	1.500	230	10.2

DETAIL OF REMOTE S/S BOX



CUSTOMER APPROVAL TO MANUFACTURE:

- Approved as Noted
- Approved with NO Exception Taken
- Revise and Resubmit

SIGNATURE \_\_\_\_\_  
Your Title \_\_\_\_\_ Date \_\_\_\_\_





CAPTIVEAIRE

JOB Our Lady of Hope	
LOCATION SCARBOROUGH, ME	
DATE 10/17/2013	JOB # 1846625
DWG # 5	DRAWN BY BFC-21
REV.	SCALE 3/8" = 1'-0"

Exhaust Fan Wiring

JOB 1846625 - Our Lady of Hope

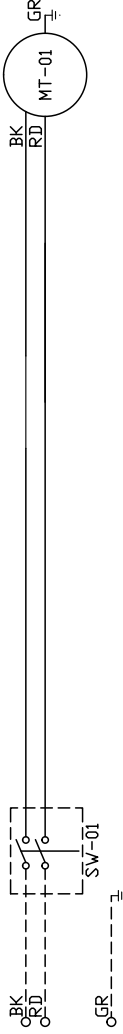
DRAWING NUMBER EXH1846625-1

SHIP DATE 10/17/2013

MODEL NCA18FA

Installed Options

1



Label Description Location  
 MT-01 Fan Motor [2]

SW-01 Main disconnect switch [2]

2

3

4

5

6

7

8

9

10

11

12

13

14

15

16

EXHAUST MOTOR INFO  
 2HP-230V-1P-12.5FLA

17

18

ELECTRICAL INFORMATION  
 MOTOR CONTROL MCF: 157A  
 MOTOR/CONTROL MCF: 25A

19

20

NOTES  
 - - - - DENOTES FIELD WIRING  
 \_\_\_\_\_ DENOTES INTERNAL WIRING

21

22

WIRE COLOR  
 BK - BLACK YW - YELLOW  
 BL - BLUE GR - GREEN  
 BR - BROWN GY - GRAY  
 OR - ORANGE PR - PURPLE  
 RD - RED PK - PINK  
 WH - WHITE

23

AirHandler Wiring

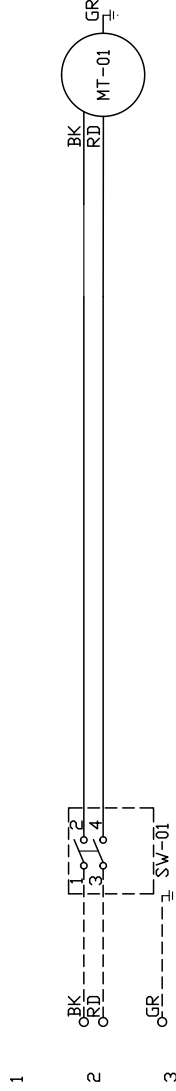
JOB 1846625 - Our Lady of Hope

DRAWING NUMBER A1846625-2

SHIP DATE 10/17/2013

MODEL A1-G10

ATTENTION ELECTRICIAN!  
 DROP FOR DISCONNECT CONNECTION IS FACTORY SUPPLIED  
 CONNECT POWER TO THE DROP



Installed Options

Label	Component Identification	Location
MT-01	Supply motor	[20]
SW-01	Main disconnect switch	[20]

SUPPLY	MOTOR INFO
	1.5HP-230V-1P-10.2FLA

ELECTRICAL INFORMATION:  
 MOTOR/CONTROL CIRCUIT MOP: 23,8A  
 MOTOR/CONTROL CIRCUIT MOP: 20A

NOTES  
 - - - - DENOTES FIELD WIRING  
 \_\_\_\_\_ DENOTES INTERNAL WIRING

WIRE COLOR  
 BK - BLACK YW - YELLOW  
 BL - BLUE GR - GREEN  
 BR - BROWN GY - GRAY  
 OR - ORANGE PR - PURPLE  
 RD - RED PK - PINK  
 WH - WHITE

- 1
- 2
- 3
- 4
- 5
- 6
- 7
- 8
- 9
- 10
- 11
- 12
- 13
- 14
- 15
- 16
- 17
- 18
- 19
- 20
- 21
- 22
- 23

ELECTRICAL PREWIRE PACKAGE

JOB NAME *Dur Lady of Hope*

DATE 10/17/2013

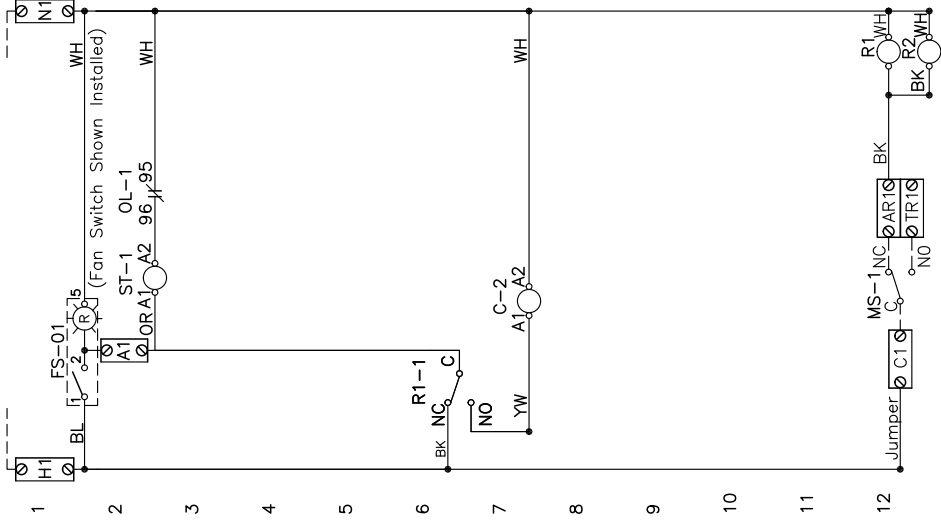
DRAWING NUMBER 21111002

JOB NUMBER 1846625

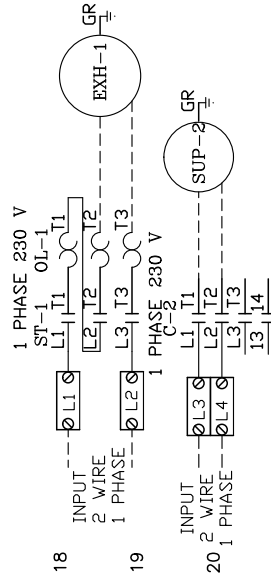
DRAWN BY

CONTROL INPUT 120VAC H1=LINE, N1=NEUTRAL 15A BKR - DO NOT WIRE TO SHUNT TRIP BREAKER

220V/1Ph, W/ 1 Exhaust Fan, 1 Supply Fan, Exhaust in Fire



15 LIGHT INPUT 120VAC H2-H5=LINE, N2-N5=NEUTRAL 15A BKR (MAX 1400W PER CIRCUIT)

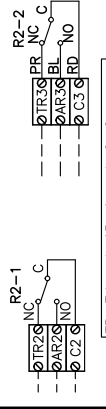


COMPONENT PARTS LIST

LABEL	DESCRIPTION
C-x	Contact
ST-x	Starter
OL-x	Overload
FS-xx	Fan Switch (Lighted)
LS-xx	Light Switch
L	Hood Light(s)
MS-x	MicroSwitch (Ansu/PyroChem)
Rx	Relay DPDT - 34.110.0184.0 + Socket

SPARE FIRE DRY CONTACTS

SPARE RELAY CONTACTS USED WHEN FIRE SYSTEM DISCHARGES TO SHUT DOWN EQUIPMENT OR PROVIDE SIGNALS. (NOT FOR BUILDING FIRE ALARM)



TR: Tripped, AR: Armed, C: Common

Rx-RELAY SOCKET STYLE "CLON"

C-RD	NO	4	3	MS-x
NO-BL	NC	2	1	MicroSwitch
NC-PR	COIL	8	7	C-RD
	COM	6	5	NC-BK

MOTOR	TAG	PH	VLT	HP	FLA	BRK
EXH-1		1	230	2.0	12.5	20A
SUP-2		1	230	1.5	10.2	15A

NOTES

----- DENOTES FIELD WIRING  
 \_\_\_\_\_ DENOTES INTERNAL WIRING

WIRE COLOR

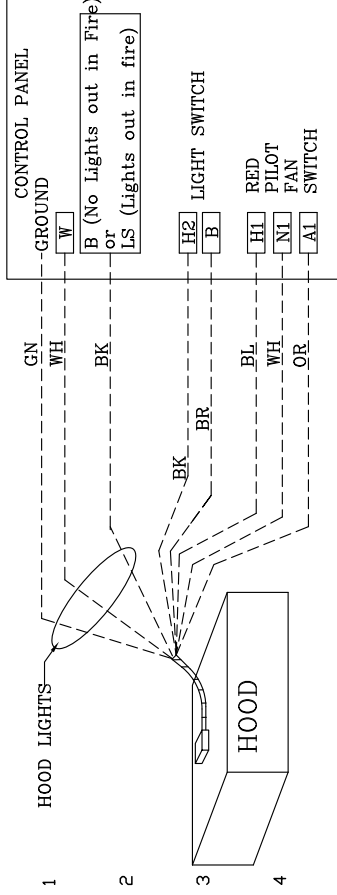
BK	-	BLACK	YW	-	YELLOW
BL	-	BLUE	CY	-	GRAY
BR	-	BROWN	PR	-	PURPLE
OR	-	ORANGE	OR/BL	-	ORANGE/BLUE (STRIPE)
RD	-	RED	BL/RD	-	BLUE/RED (STRIPE)
WH	-	WHITE	RD/GN	-	RED/GREEN (STRIPE)

DRAWING SHOWN DE-ENERGIZED

NOTE: IF WALL MOUNT PREWIRE, OR FIELD INSTALLED FIRE SYSTEM MICROSWITCH, THE TERMINALS SHOWING FACTORY WIRING MUST BE FIELD WIRED.

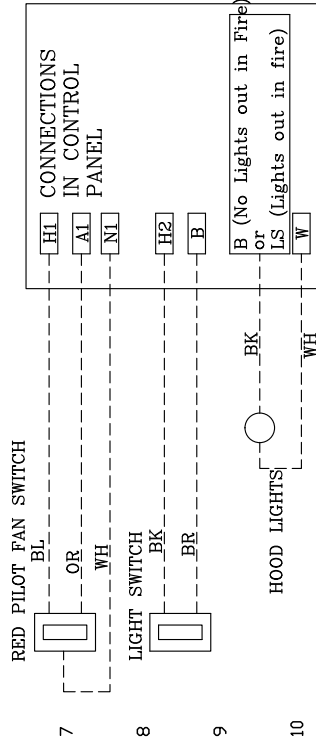


HOOD TO CONTROL PANEL

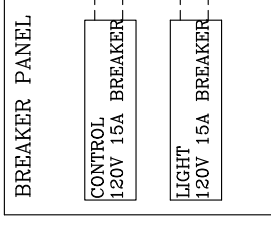


5 Light switch and fan switch mounted on the face of the hood and control panel mounted separately then field wire to the control panel as shown.

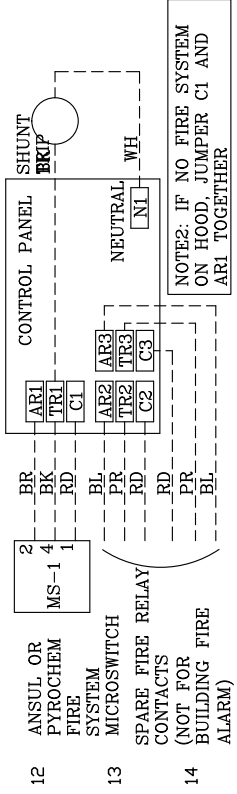
6 FIELD WIRED SWITCHES TO CONTROL PANEL



POWER FEED FOR CONTROLS AND LIGHTING

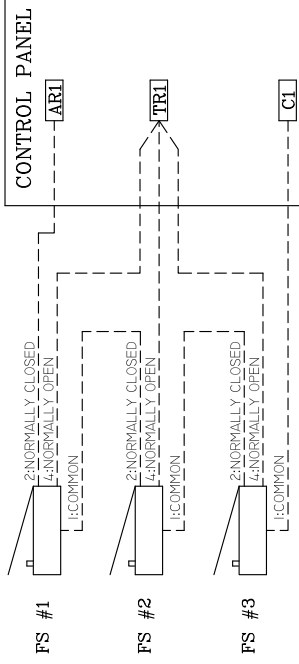


11 FIRE SYSTEM MICROSWITCH 120VAC SHUNT TRIP WIRING TO CONTROL PANEL BREAKER WIRING

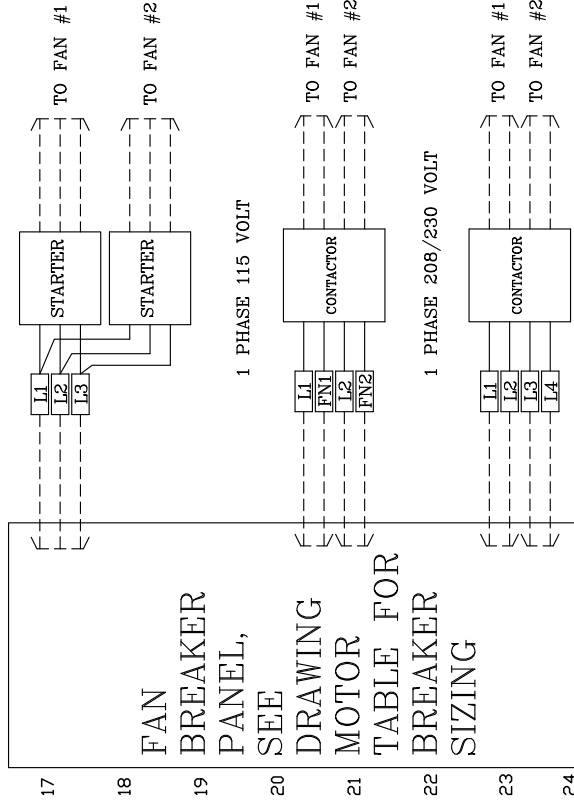


15 NOTE: BUILDING FIRE ALARM IS TO BE WIRED TO THE "ALARM INITIATING SWITCH" INSIDE THE FIRE SYSTEM AUTOMAN

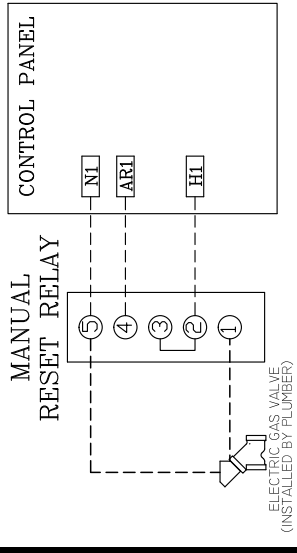
MICRO-SWITCHES WIRING WHEN MULTIPLE FIRE SYSTEMS CONNECTED TO ONE ELECTRICAL PANEL (3 SHOWN HERE)



16 FAN WIRING TO CONTROL PANEL



ELECTRIC GAS VALVE WITH RESET RELAY



NOTES

--- DENOTES FIELD WIRING  
- - - - - DENOTES INTERNAL WIRING

WIRE COLOR

BK	-	BLACK
BL	-	BLUE
BR	-	BROWN
OR	-	ORANGE
RD	-	RED
WH	-	WHITE
GN	-	GREEN
YW	-	YELLOW
GY	-	GRAY
PR	-	PURPLE
DR/BL	-	DRANGE/BLUE
(S)TRIPE	-	(S)TRIPE
BL/RD	-	BLUE/RED
RD/WH	-	RED/WHITE
RD/GN	-	RED/GREEN
(S)TRIPE	-	(S)TRIPE