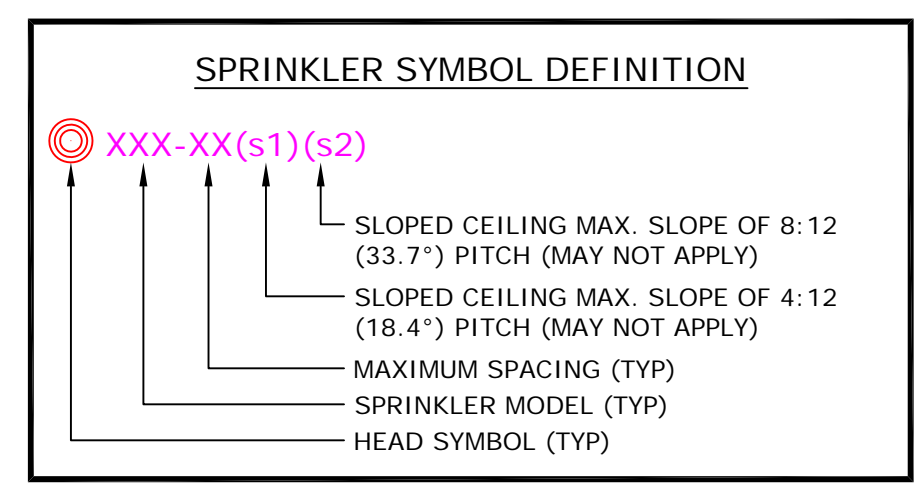


F:\New_Sales\Customer and Technical Support\TECH_SUPPORT\Design Department\Tech Service\2012\Fire Safety\120322-41 Church\DWG\120322-41 Church.dwg 04/05/12 - 12:13 pm

| Markup Legend | |
|---------------|--|
| Delete Line | |
| Add Line | |
| Add Tee | |
| Add Elbow | |
| Add Coupling | |
| Add Head | |
| Delete Head | |
| Move Head | |

Note: All revisions must be reviewed by Uponor



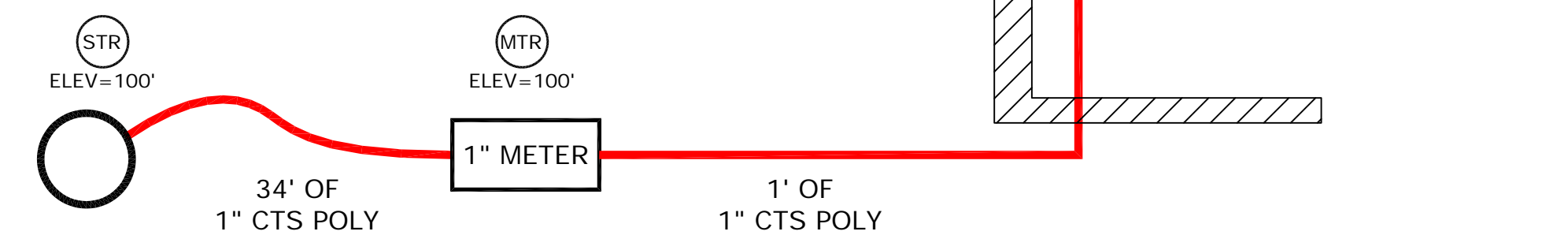
Multipurpose Fire Safety Systems
 The Uponor Residential Fire Safety System is a residential fire protection system installed in combination with the cold side of the domestic potable water system. Only licensed contractors trained by Uponor can install this system.

What to do if Changes are Required
 If any features or obstructions require the addition or deletion of sprinkler heads, or significant relocation of sprinkler heads, contact the Uponor Design Department to determine if observed changes require a redesign (888.594.7726).

STATIC: 92psi
 RESIDUAL: 87psi
 FLOW RATE: 300gpm

2 WATER SERVICE DETAIL

F100 NTS

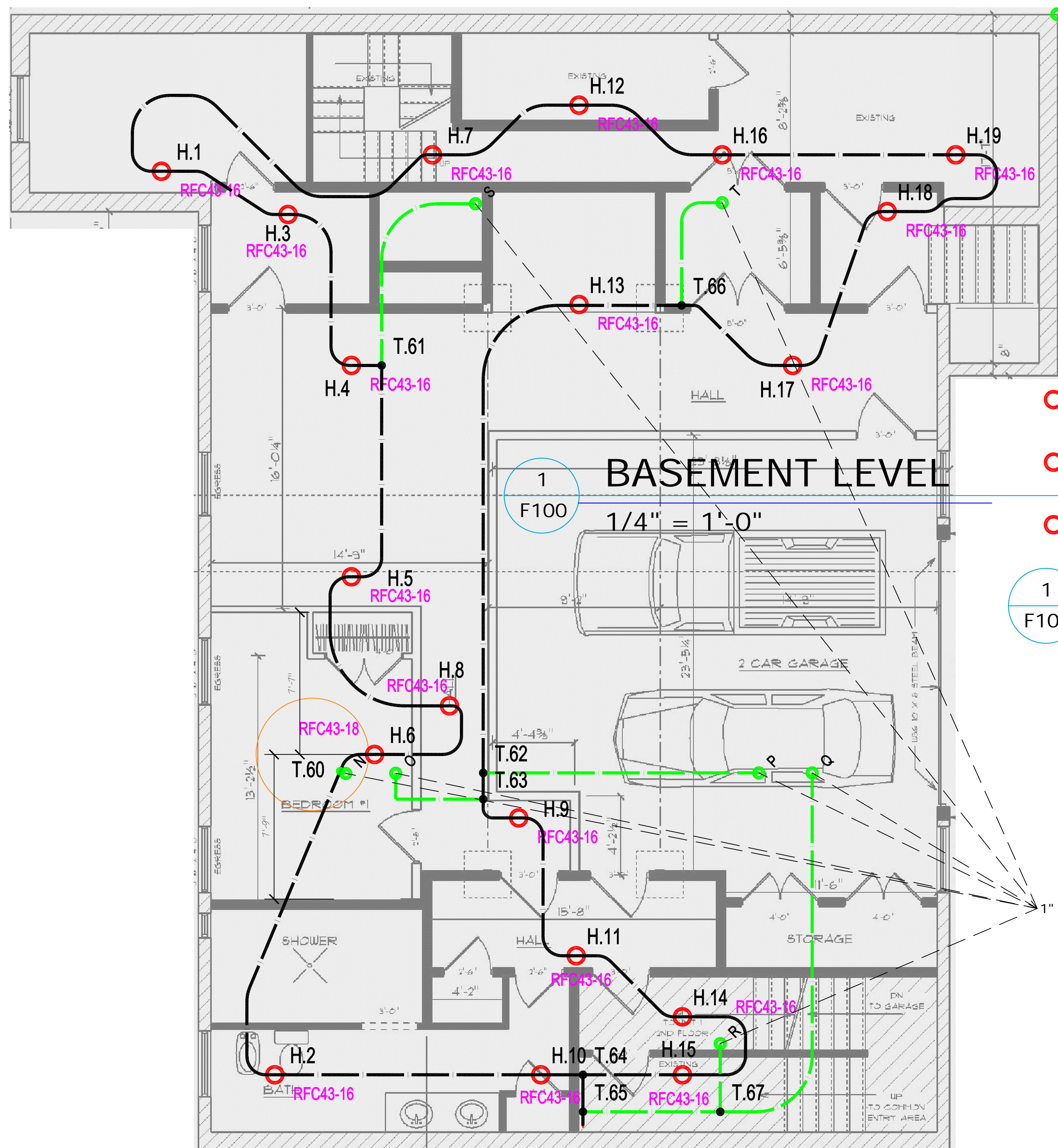


COLOR/LINETYPE LEGEND

- BLUE LINES= FEED TO FIXTURES (BATH, SHOWER, ETC.).
- GREEN LINES= INTERLEVEL CONNECTIONS.
- BLACK LINES= SPRINKLER HEAD TO SPRINKLER HEAD.
- = 1/2" PIPE SIZE
- = 3/4" PIPE SIZE
- = 1" PIPE SIZE
- = 1-1/4" PIPE SIZE
- = 2" PIPE SIZE

MOST HYDRAULICALLY REMOTE HEADS

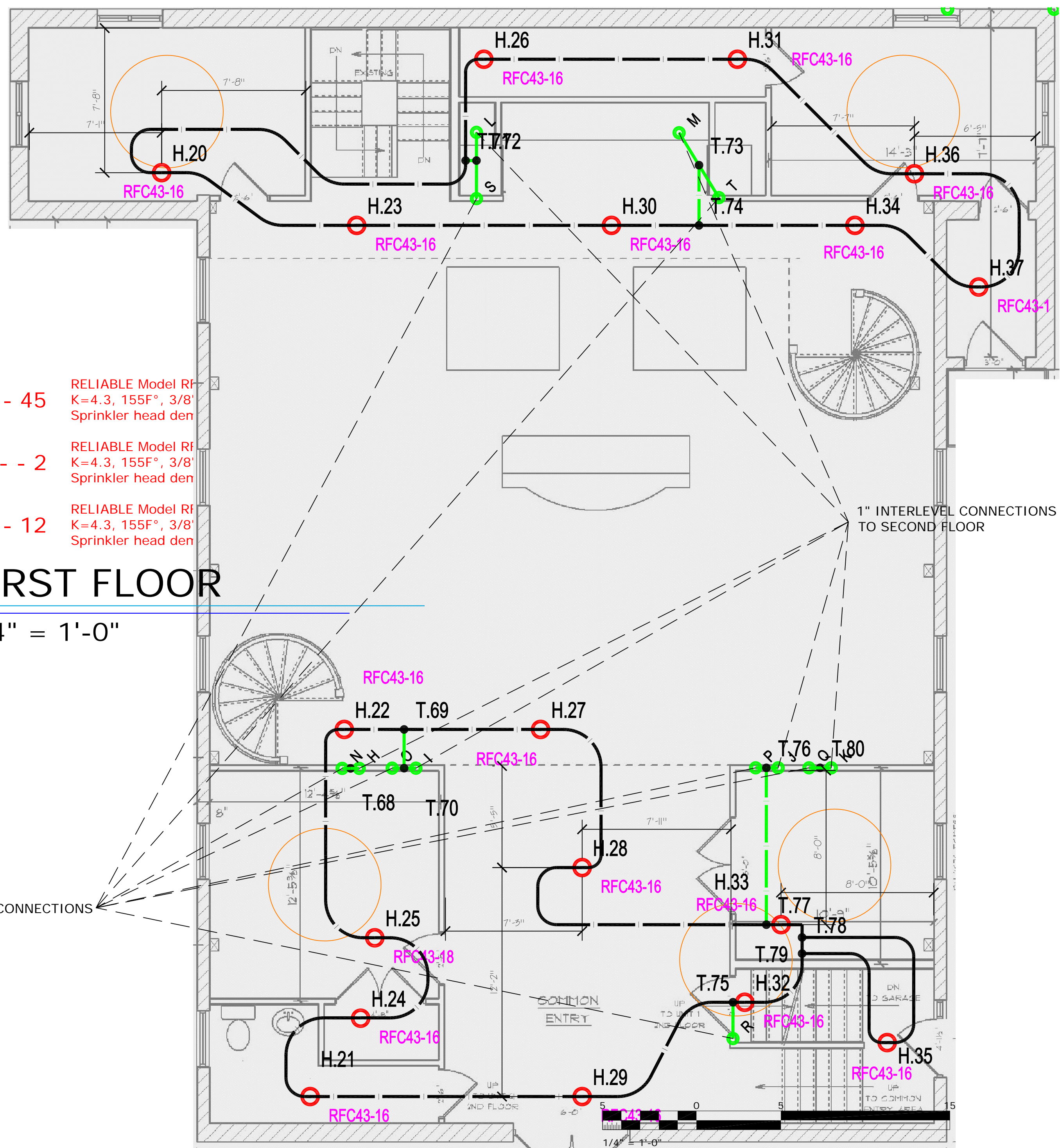
| HEAD # | GPM | PRESSURE REQ'D AT STREET |
|--------------------|---------|--------------------------|
| 1 HEAD H.50 | 18 | 47.95 |
| 2 HEAD H.50 & H.54 | 35.9984 | 73.13 |



- --- 45 RELIABLE Model RF K=4.3, 155F°, 3/8" Sprinkler head den
- --- 2 RELIABLE Model RF K=4.3, 155F°, 3/8" Sprinkler head den
- --- 12 RELIABLE Model RF K=4.3, 155F°, 3/8" Sprinkler head den

1 FIRST FLOOR

1/4" = 1'-0"



DISCLAIMER
 THIS SERIES OF PLUMBING, MECHANICAL, ELECTRICAL, AND HVAC DRAWINGS, INCLUDING SCHEDULES, SPECIFICATIONS, AND/OR FIRE SPRINKLER TECHNICAL SERVICES - DESIGN DRAWINGS, HAVE BEEN PREPARED BY UPPONOR, INC. TECHNICAL SERVICES - DESIGN DEPARTMENT. THEY HAVE BEEN PREPARED TO MEET PROFESSIONAL STANDARDS OF DESIGN AND CONSTRUCTION. BEFORE STARTING ALL WORK, THE CONTRACTOR SHALL VERIFY THE ACCURACY OF ALL DIMENSIONS AND/OR FIRE CODES USED. REPORT ANY ERRORS AND/OR DESIGN CHANGES TO UPPONOR, INC. TECHNICAL SERVICES - DESIGN DEPARTMENT IMMEDIATELY. UPPONOR, INC. TECHNICAL SERVICES - DESIGN DEPARTMENT DESIGN CHANGES ARE NOT REPORTED BACK TO UPPONOR, INC. IT IS THE SOLE RESPONSIBILITY OF THE INSTALLER TO ENSURE SYSTEM DESIGN WILL FUNCTION IN ACCORDANCE WITH ALL APPLICABLE CODES AND REGULATIONS. UPPONOR, INC. TECHNICAL SERVICES - DESIGN DEPARTMENT SHALL NOT BE RESPONSIBLE FOR ANY DAMAGES THAT MAY RESULT FROM THE APPLICATION AND INCORRECT INTERPRETATION OF THESE DRAWINGS.
 SALES REP.

Church
 305 COMMERCIAL STREET
 PORTLAND, ME

SHEET DESCRIPTION
 BASEMENT AND MAIN LEVEL

SHEET NUMBER
F100

| NO. | DATE | REVISIONS | DESCRIPTION |
|-----|------|-----------|-------------|
| | | | |

| | | | |
|--------------------|-----------------|---------------------|--------------|
| DRAWN BY: | DAN HUBBARD SET | CONTACT PH. NUMBER: | 207-318-2368 |
| CHECKED BY: | DAN HUBBARD | ALLIANCE ID: | T.B.D. |
| GENERATION LEVEL: | SET IV | PLOT DATE: | 4/1/2012 |
| GENERATION NUMBER: | 115052 | SHEET SCALE: | 1/4"=1'-0" |
| COMPANY: | ADG BUILDERS | PROJECT NUMBER: | 120322-411 |
| CONTACT: | ALLYN GEE | SQUARE FEET: | 6384 |

uponor

TECHNICAL SERVICES - DESIGN DEPARTMENT
 21500 DODD BLVD., BAKEVILLE, MN 55044
 T. 888.594.7726 F. 952.997.1731
 EMAIL: TECHNICALSERVICES@UPONOR.COM
 WEB: WWW.UPONOR-USA.COM