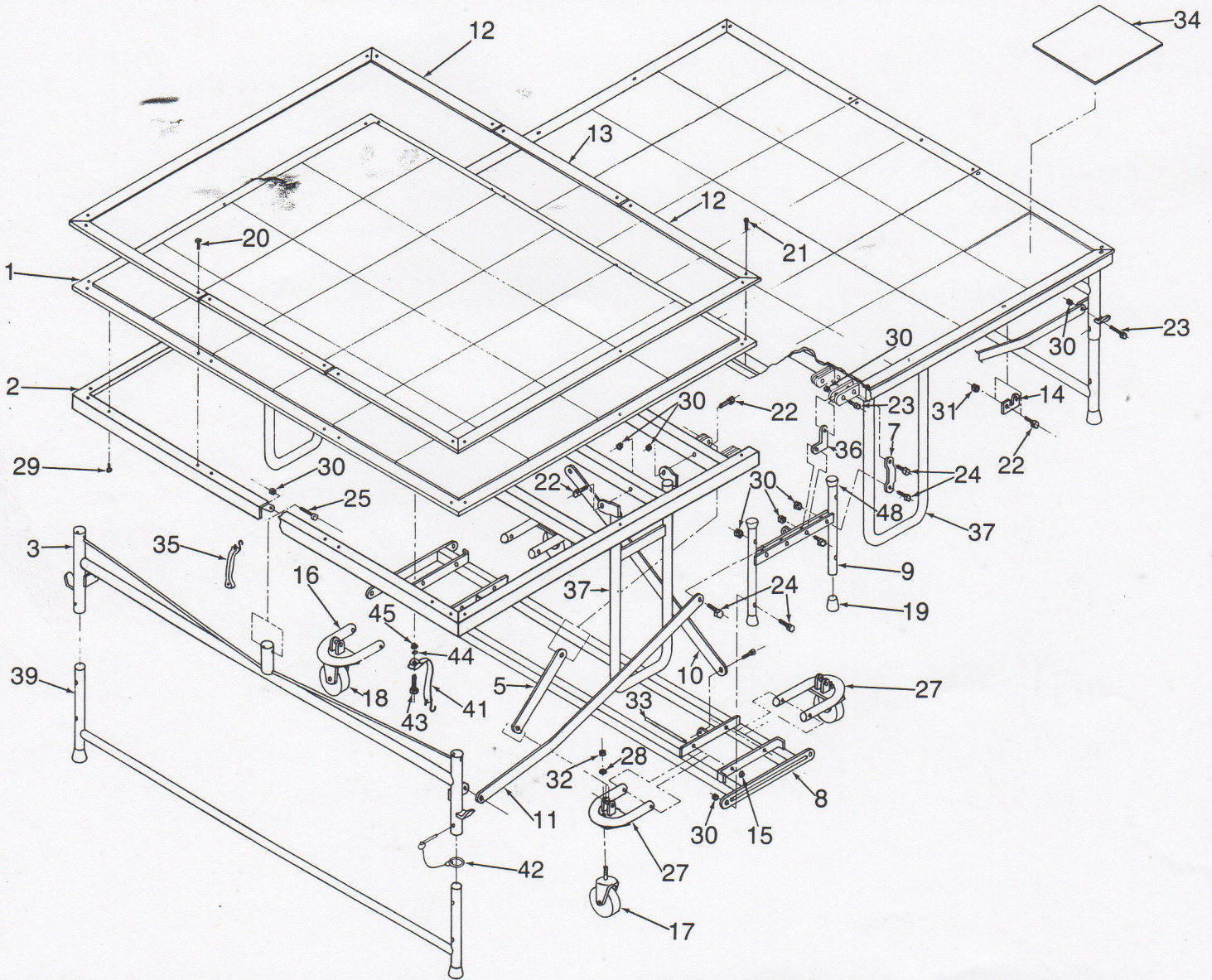
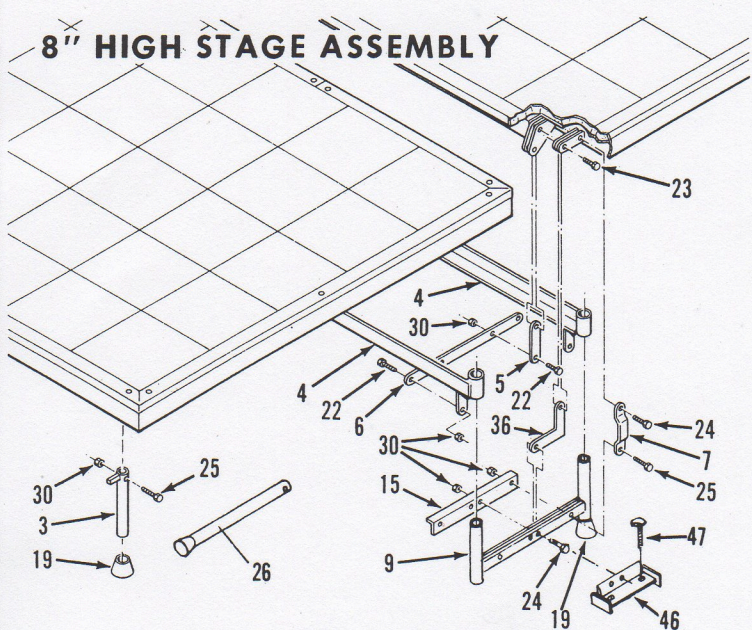


# 16" THRU 40" HIGH STAGE ASSEMBLY - SINGLE AND DUAL HEIGHT MOBILE STAGES



## 8" HIGH STAGE ASSEMBLY



NOTE: Item 46 and 47 also used on all 40", 48" high stages

ITEM	DESCRIPTION	ITEM	DESCRIPTION
1.	Top Panel — Tiled	24.	Cap Screw $\frac{3}{8}$ " — 24x1 $\frac{3}{4}$ "
2.	Top Frame	25.	Cap Screw $\frac{3}{8}$ " — 24x2 $\frac{1}{2}$ "
3.	Leg Weldment — Upper	26.	Stop Leg
4.	Caster Beam	27.	Caster Beam (Swivel)
5.	Top Frame Lever	28.	Lock Washer $\frac{1}{2}$ "
6.	Caster Beam Connector	29.	Expanding Rivet $\frac{1}{4}$ "x $\frac{1}{2}$ "
7.	Connector Bar	30.	Stop Nut $\frac{3}{8}$ " — 24
8.	Caster Frame	31.	$\frac{3}{8}$ " H.H. Nut
9.	H-Brace	32.	Nut $\frac{1}{2}$ " — 13
10.	Sway Brace	33.	$\frac{3}{8}$ " Dia. x 7" Long Rod
11.	Tension Bar	34.	Tile 12"x12"x1/16"
12.	Edge Banding	35.	Strap Assembly
13.	Edge Banding	36.	Connector Link
14.	Clip	37.	Center Extension Leg
15.	$\frac{3}{8}$ " Dia. Pushnut	39.	Leg Weldment — Lower
16.	Caster Beam Ass'y	41.	Strap Assembly (Dual Ht. Only)
17.	Swivel Caster 5"	42.	Hitch Pin Assembly (Dual Ht. Only)
18.	Stationary Caster 5"	43.	Cap Screw $\frac{1}{4}$ " — 20x1 $\frac{1}{2}$ "
19.	Polyethylene Glide (White)	44.	Washer $\frac{1}{4}$ "
20.	Expanding Rivet $\frac{1}{4}$ "x $\frac{3}{4}$ " Grip	45.	Hex Nut $\frac{1}{4}$ " — 20
21.	Expanding Rivet $\frac{1}{4}$ "x $\frac{5}{8}$ " Grip	46.	Stop Weldm't.
22.	Cap Screw $\frac{3}{8}$ " — 24x1"	47.	$\frac{1}{2}$ "-13x3 $\frac{1}{4}$ " Cam Bolt
23.	Cap Screw $\frac{3}{8}$ " — 24x1 $\frac{1}{2}$ "	48.	1" Black Rubber Guide

SERIAL NUMBER Please include the serial number of the stage when ordering parts. The serial number is located inside the steel frame, on the lower part of one of the decks. When stage is folded, serial number is clearly visible on lower section of the steel frame.