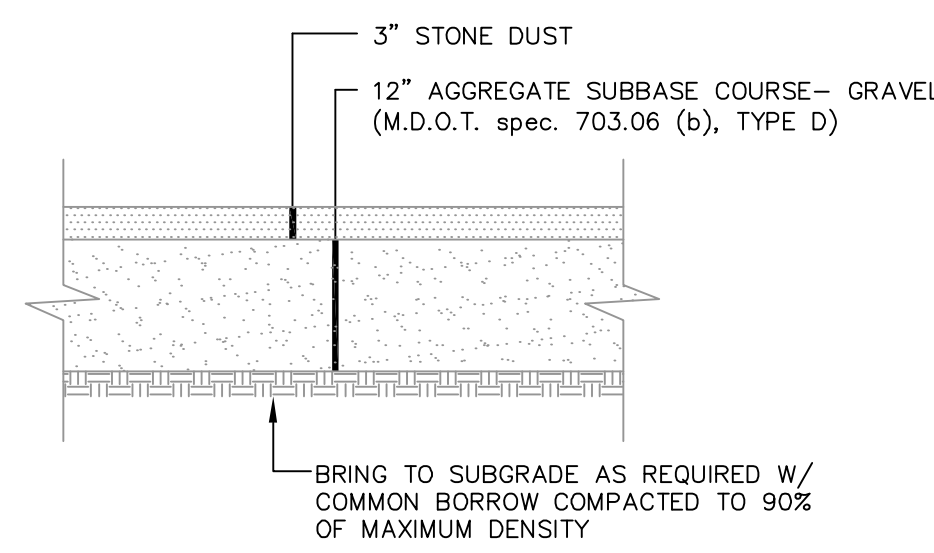
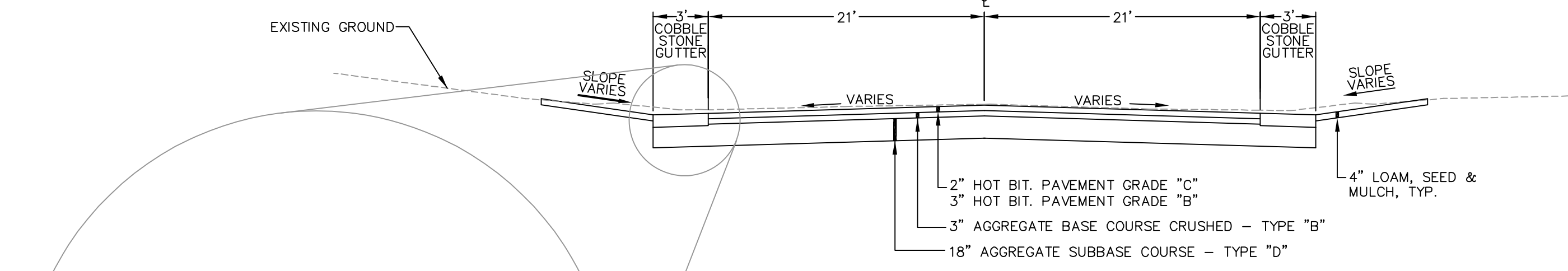


TYPE 5 GRANITE CURB SECTION
NOT TO SCALE



TYPICAL TRAIL SECTION
NOT TO SCALE

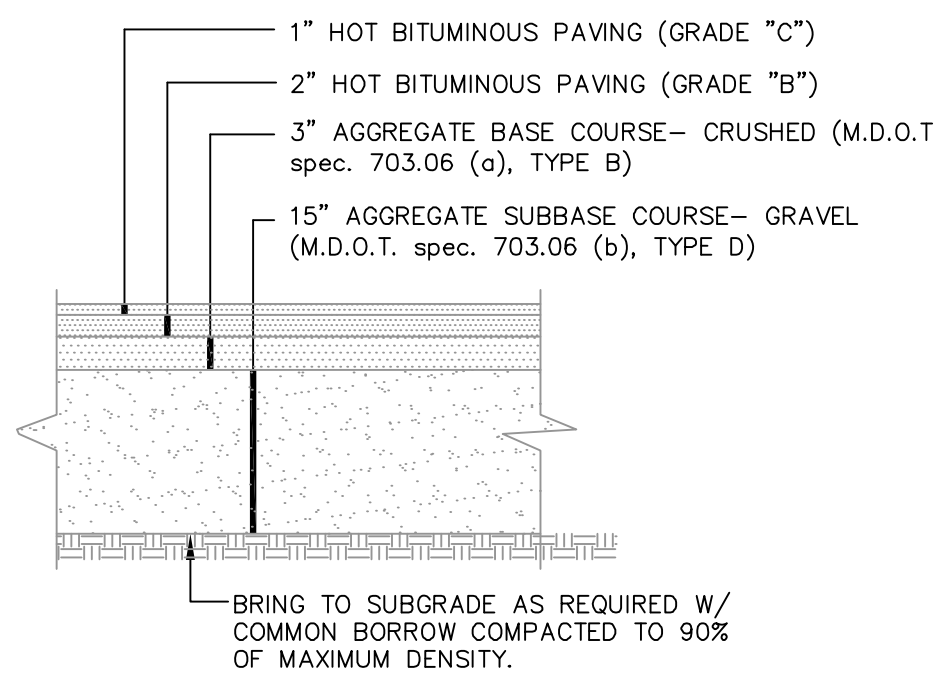


BAXTER BOULEVARD TYPICAL SECTION
NOT TO SCALE

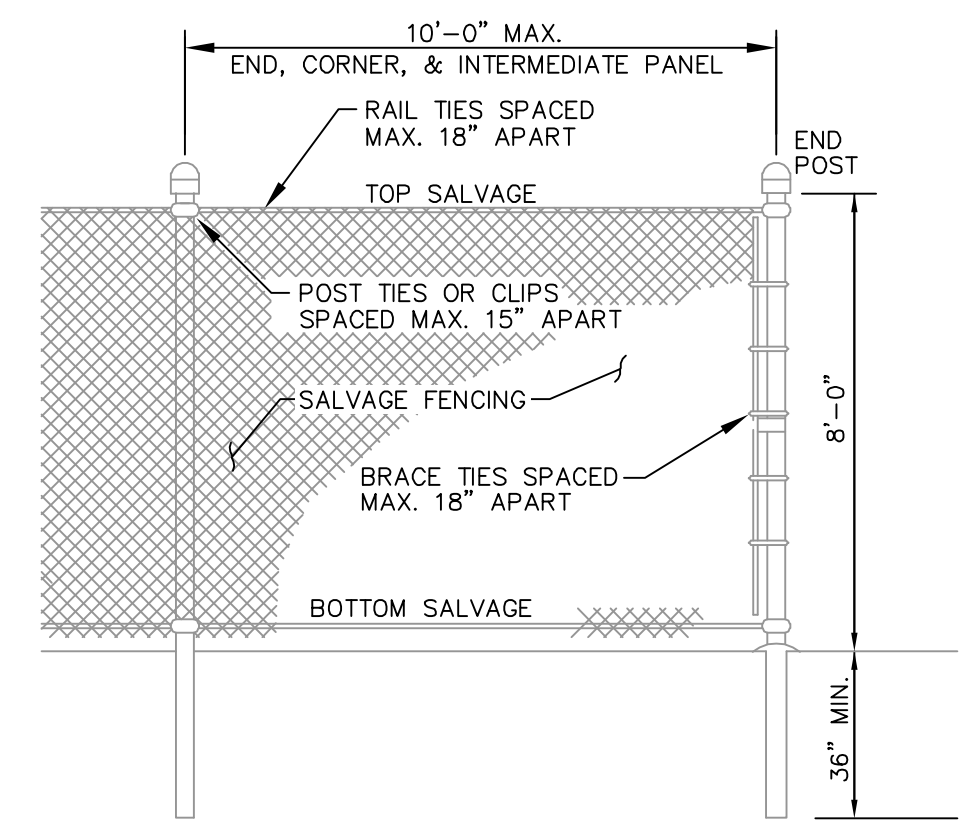
RECOMMENDED MINIMUM PLACEMENT TEMPERATURES FOR PAVEMENT

BASE ¹ TEMPERATURE °F	MAT THICKNESS, IN INCHES					
	1/2	3/4	1	1 1/2	2	3
+40 - 50	-	-	310	300	285	275
+50 - 60	-	-	310	300	295	280
+60 - 70	310	300	290	285	275	265
+70 - 80	300	290	285	280	270	265
+80 - 90	290	280	275	270	265	260
+90	280	275	270	265	260	255
ROLLING TIME MIN.	4	6	8	12	15	15

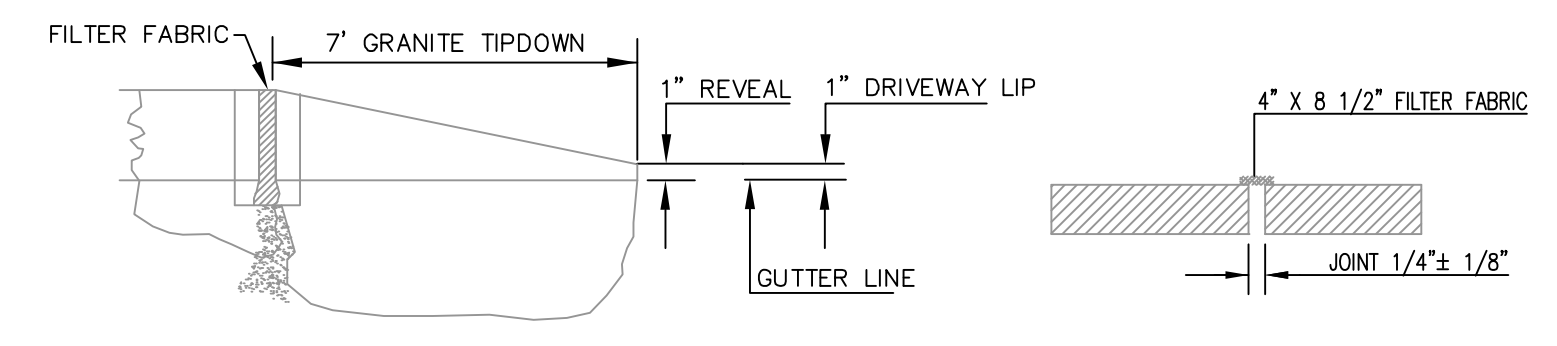
1. BASE ON WHICH MAX IS PLACED AND GREATER



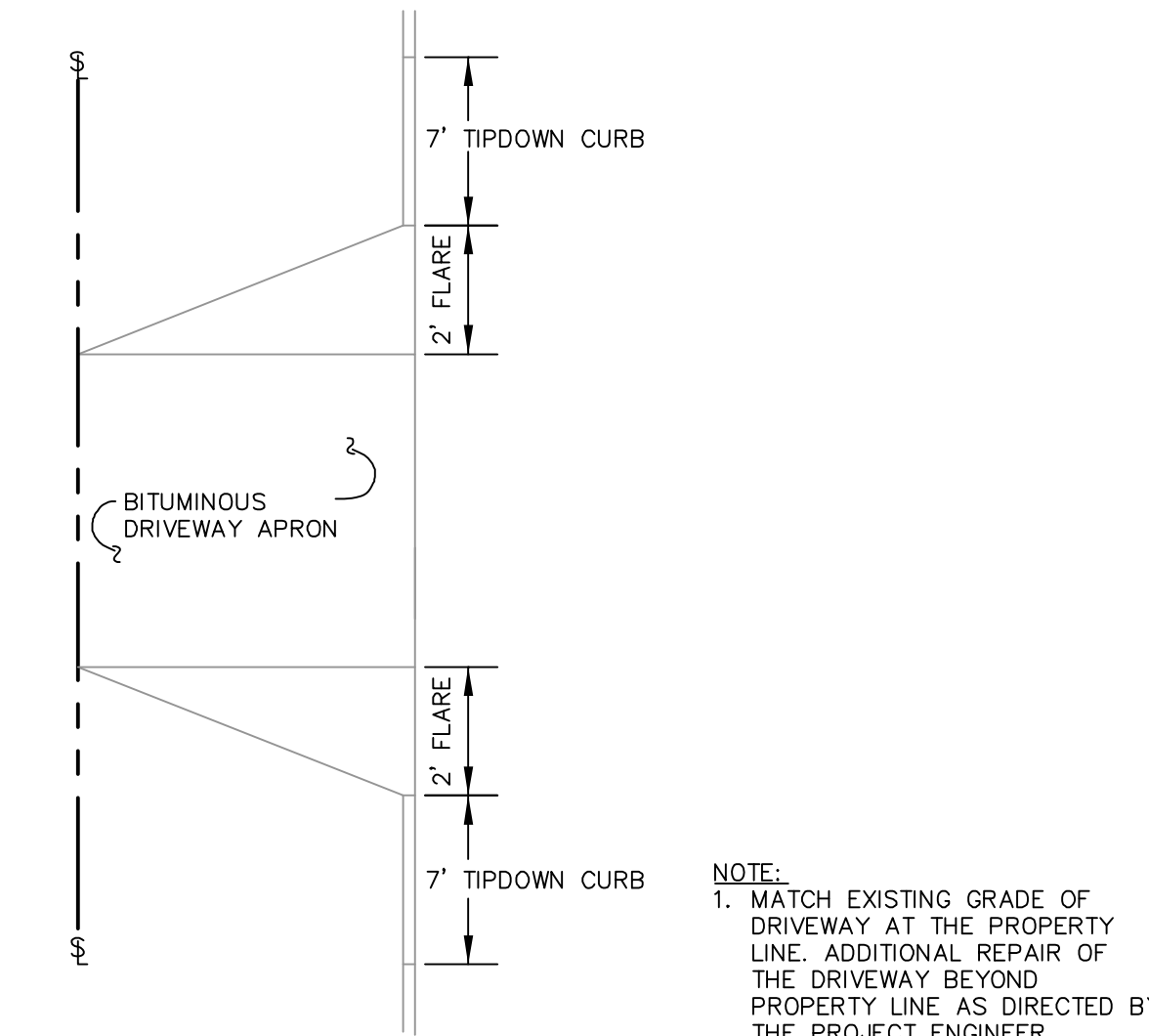
TYPICAL PAVED PARKING AREA SECTION
NOT TO SCALE



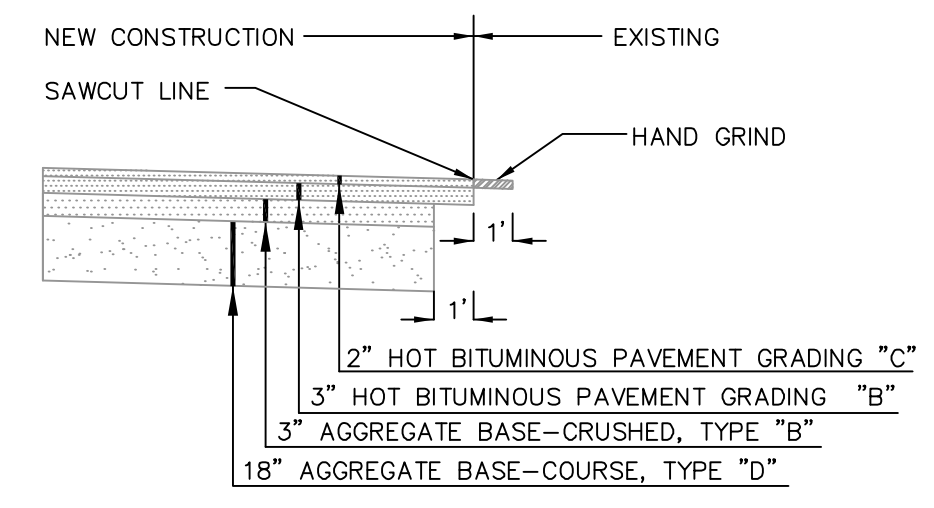
TEMPORARY CHAIN LINK SAFETY FENCE
NOT TO SCALE



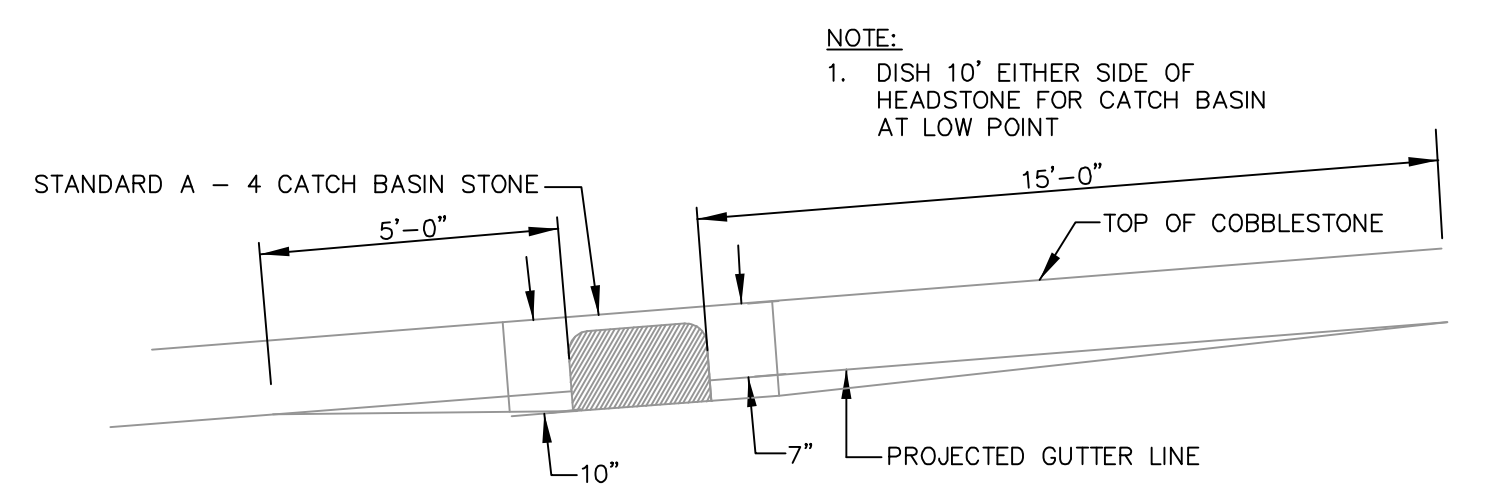
TYPICAL TIPDOWN CURB INSTALLATION
NOT TO SCALE



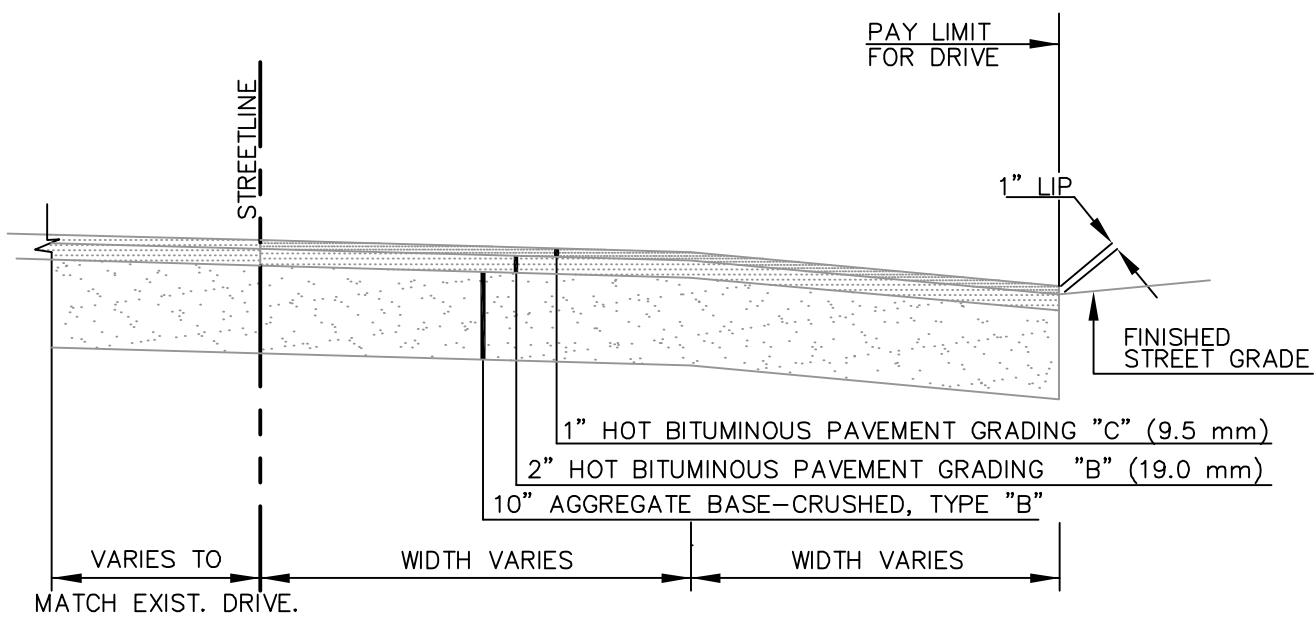
TYPICAL DRIVEWAY APRON LAYOUT
NOT TO SCALE



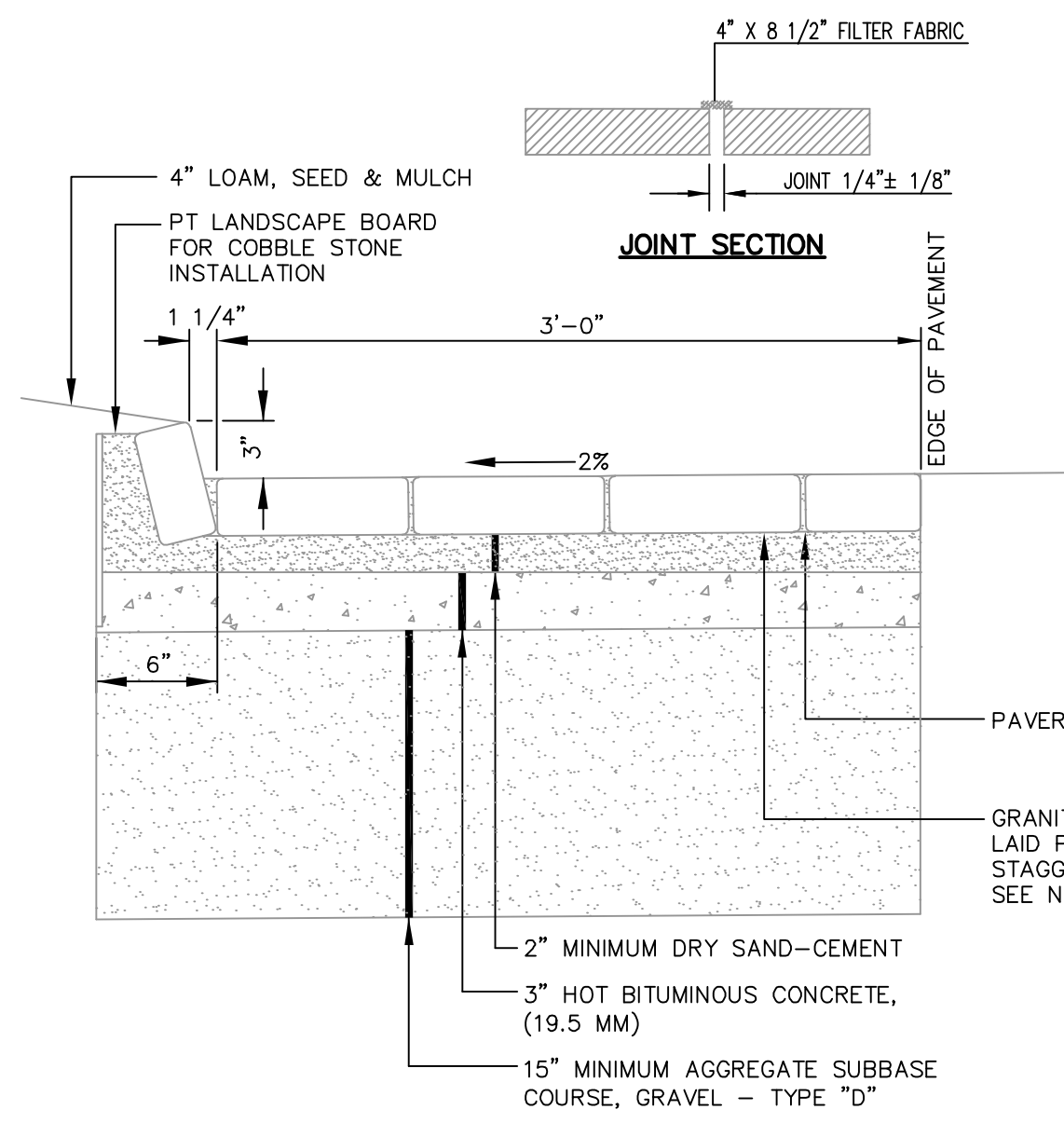
PAVEMENT BUTT JOINT
NOT TO SCALE



TYPICAL PAVEMENT GRADING ON SLOPES FOR CATCH BASIN & INLET
NOT TO SCALE

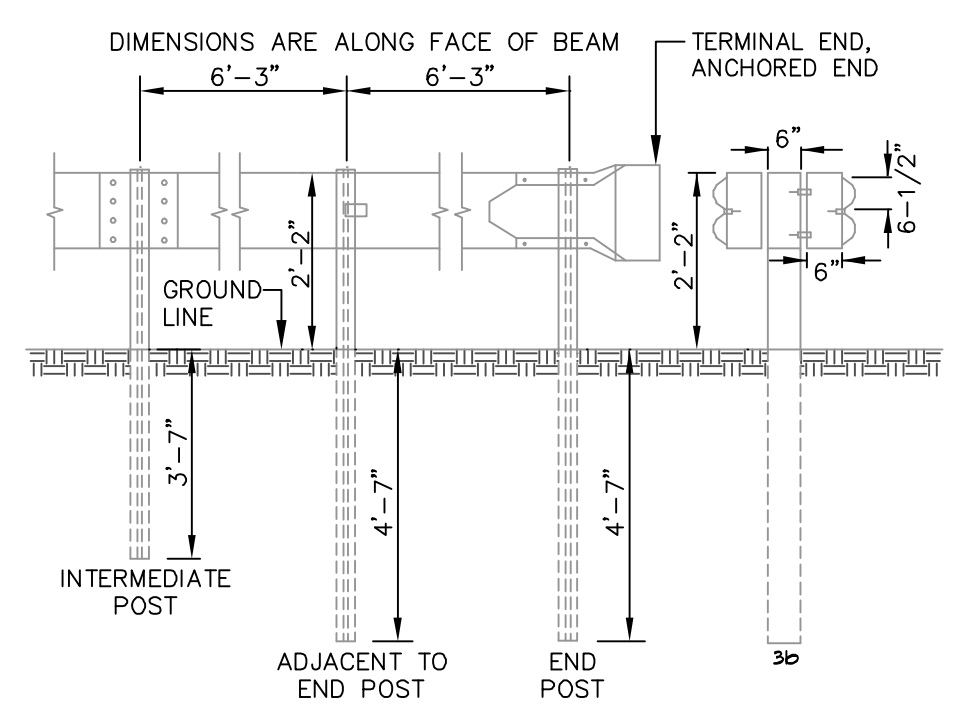


BITUMINOUS DRIVEWAY SECTION
NOT TO SCALE

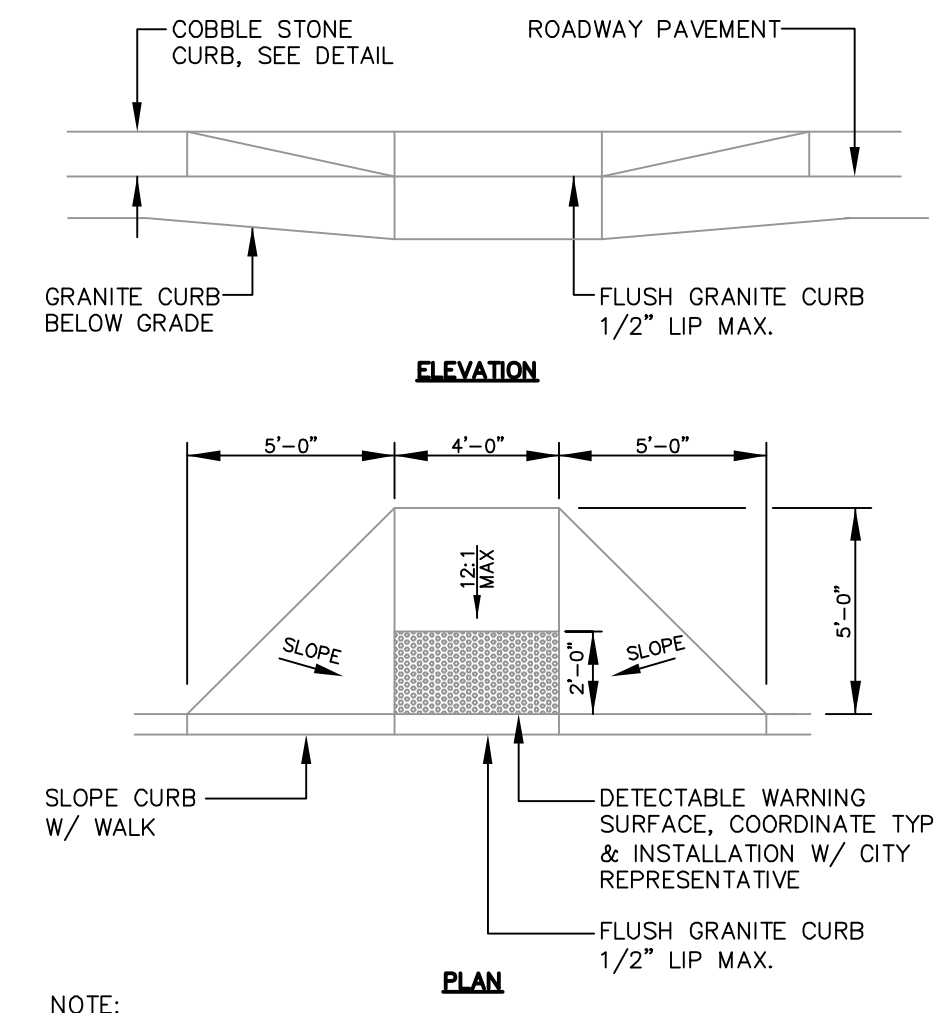


COBBLE STONE GUTTER SECTION
NOT TO SCALE

- NOTES:**
1. DRY SAND-CEMENT MIX SHALL BE SIX (6) PARTS OF WASHED MORTAR SAND TO ONE (1) PART PORTLAND CEMENT.
 2. DRY SAND-CEMENT SHALL BE PLACED AND SWEEP INTO THE JOINTS TO WITHIN 1/4" TO 1/2" OF PAVEMENT SURFACE.
 3. ALL SURPLUS SAND-CEMENT SHALL BE SWEEPED FROM THE GRANITE PAVEMENT SURFACE.
 4. A FINAL APPLICATION OF SAND ONLY SHALL BE SPREAD ON THE GRANITE PAVEMENT SURFACE.
 5. REUSE EXISTING GRANITE PAVERS TO GREATEST EXTENT POSSIBLE.



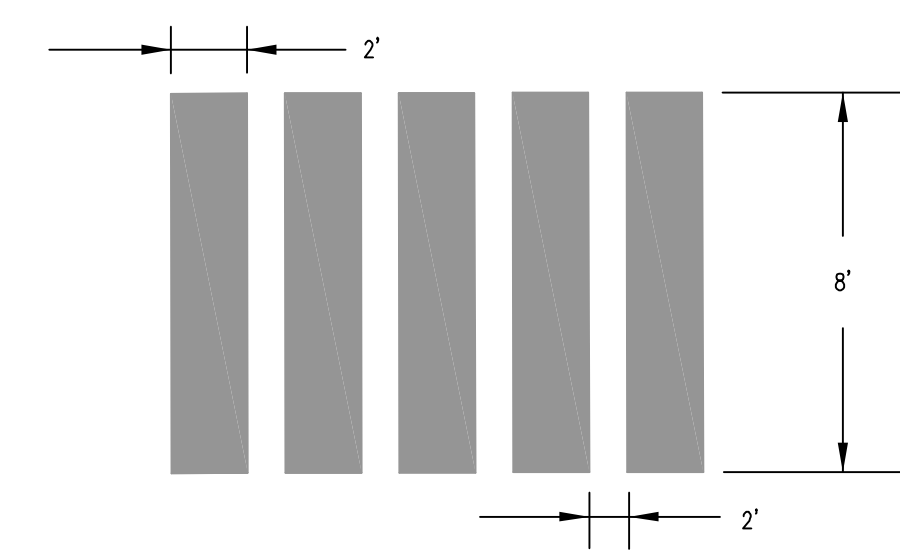
GUARDRAIL TYPE 3b (DOUBLE RAIL)
NOT TO SCALE



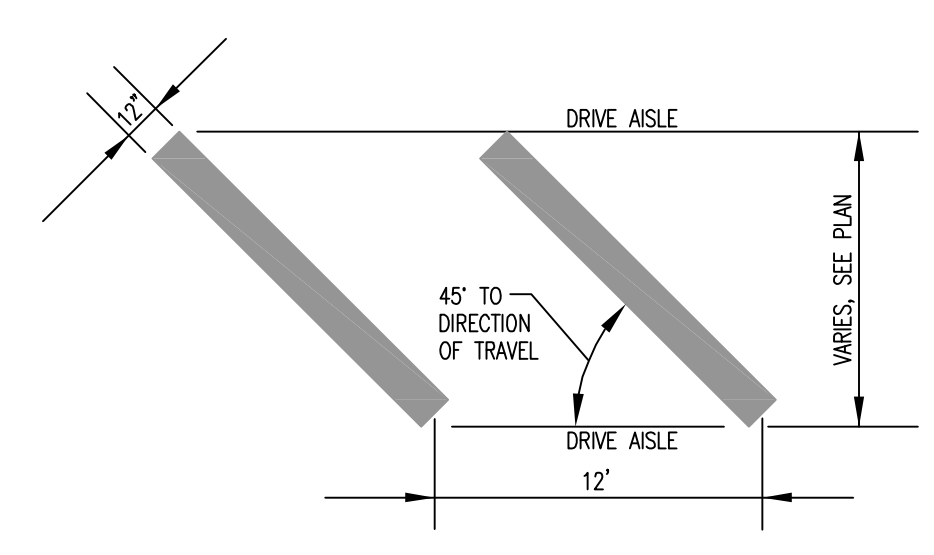
CONCRETE PEDESTRIAN RAMP @ CROSSWALK
NOT TO SCALE

PAVEMENT MARKING NOTES

1. ALL PAVEMENT MARKINGS SHALL BE IN CONFORMANCE WITH THE MANUAL ON UNIFORM TRAFFIC CONTROL DEVICES FOR STREETS AND HIGHWAYS, U.S. DOT, FHWA, LATEST EDITION.
2. ALL PAVEMENT MARKING LINES SHALL BE PAINT AND 4" WIDE, EXCEPT FOR:
CROSSWALK BARS - 24"
PAINTED MEDIAN - 12"
3. PAVEMENT WORD AND SYMBOL MARKINGS SHALL BE WHITE PAINT.
4. SOLID WHITE STOP LINE SHALL BE A MINIMUM OF 4' BEHIND THE EDGE OF CROSSWALK.



CROSSWALK DETAIL
NOT TO SCALE



PAINTED MEDIAN DETAIL
NOT TO SCALE

NOT FOR CONSTRUCTION

BAXTER BOULEVARD NORTH STORAGE CONDUIT STANDARD CONSTRUCTION DETAILS

CITY OF PORTLAND, MAINE PUBLIC SERVICES DEPARTMENT ENGINEERING DIVISION

LD RESURGAM ENI OF PORTLAND MAINE

LD PROJECT NAME: BAXTER BOULEVARD NORTH STORAGE CONDUIT
DRAWING NAME: 09006D
FIELD BOOK USED: N/A

DESIGNED BY: GMM/CAB
DRAWN BY: CAB
CHECKED BY: GMM
SCALE: AS NOTED
DATE: 09-28-2012

REFERENCES: 09006D.dwg, TAB:DETAIL3

SHEET # 27 OF #PGS
PLAN NUMBER