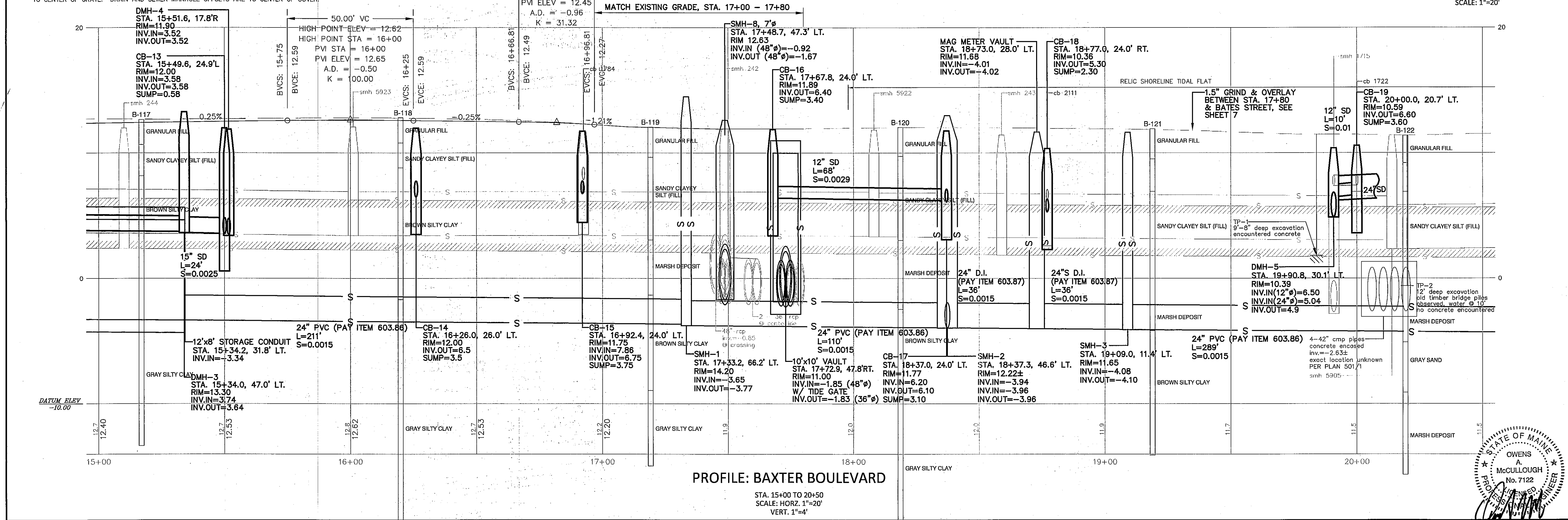


- NOTES:**
- CONTRACTOR SHALL PROVIDE AND INSTALL BYPASS DURING CONSTRUCTION OF CSO-006 DIVERSION STRUCTURE. BYPASS PIPING SHALL BE CAPABLE OF PASSING 86 CFS (PREDICTED 25-YEAR STORM FLOW).
 - SEE CROSS SECTION FOR ADDITIONAL TRAIL REALIGNMENT CONSTRUCTION INFORMATION.
 - REFER TO DEMOLITION NOTES FOR INFORMATION ON OLD BRIDGE STRUCTURE BETWEEN STATIONS 9+59.0 AND 10+22.0.
 - LOW PERMEABILITY DAMS OF NATURAL CLAY, BETONITE OR FLOWABLE FILL SHALL BE INSTALLED EVERY 200 FEET ALONG THE STORAGE CONDUIT TO MINIMIZE TIDAL FLOW THROUGH THE BACKFILL. DAMS SHALL EXTEND A MINIMUM 1 FOOT BELOW THE TRENCH BOTTOM, 2 FEET BEYOND THE SIDEWALLS AND UP TO ELEVATION +7.4. DAMS SHALL BE A MINIMUM OF 2 FEET THICKNESS.
 - CONTRACTOR SHALL SUBMIT WORK PLAN FOR 48" RCP CONNECTION AT SMH-8. ALL WORK ASSOCIATED WITH CONNECTION INCLUDING BUT NOT LIMITED TO SAW CUTTING PIPE, REPLACEMENT OF 84" PIPE SECTION AND WATERTIGHT CONNECTION SHALL BE CONSIDERED INCIDENTAL TO PAY ITEM 604.154.
 - CATCH BASIN OFFSETS ALONG BAXTER BOULEVARD ARE TO THE EDGE OF CURB AND CATCH BASIN OFFSETS OUTSIDE BAXTER BOULEVARD ARE TO CENTER OF GRADE. DRAIN AND SEWER MANHOLE OFFSETS ARE TO CENTER OF COVER.



PROFILE: BAXTER BOULEVARD
 STA. 15+00 TO 20+50
 SCALE: HORZ. 1"=20'
 VERT. 1"=4'

DRAIN MANHOLE CONNECTION
 SCALE: 1"=20'

LD PROJECT NAME:
 BAXTER BOULEVARD
 NORTH STORAGE CONDUIT

DRAWING NAME:
 090606P1

FIELD BOOK USED:
 N/A

REFERENCES:
 090606p1.dwg, TAB BAXTER 15+00-20+50

DESIGNED BY:	CRAG/CAB
DRAWN BY:	BREY/CAB
CHECKED BY:	COAM
SCALE:	AS NOTED
DATE:	11-16-2012

CRAIG A. BURGESS
 No. 12638
 LICENSED PROFESSIONAL ENGINEER

**BAXTER BOULEVARD
 NORTH STORAGE CONDUIT
 PLAN & PROFILE**
 STATIONS 15+00 TO 20+50

**CITY OF PORTLAND, MAINE
 PUBLIC SERVICES DEPARTMENT
 ENGINEERING DIVISION**

OWENS A. McCULLOUGH
 No. 7122
 LICENSED PROFESSIONAL ENGINEER

SHEET #
 11 OF 54

PLAN NUMBER