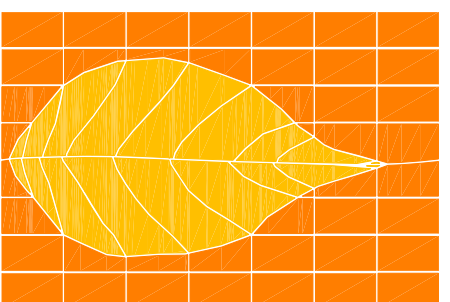


**REDFERN HOUSE**  
 FOR REDFERN PROPERTIES LLC.  
 12 VICTOR RD. PORTLAND, MAINE

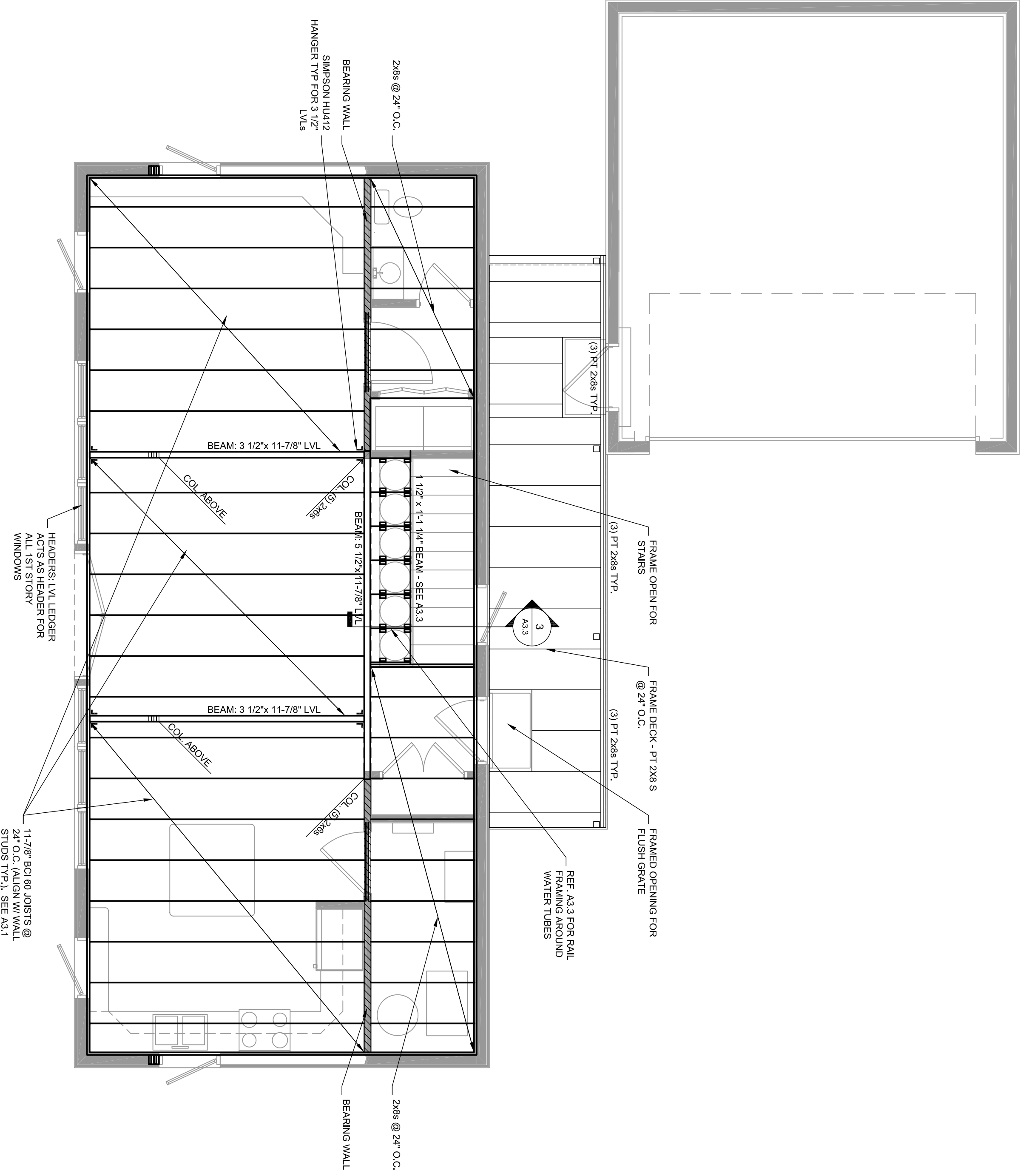


**GREEN DESIGN STUDIO**  
 architecture for life  
 325 main street  
 yarmouth, maine 04096  
 f: 207.449.1128  
 f: 207.449.1139  
 www.greendesignstudio.com

**CONSULTANTS:**  
**STRUCTURAL:**  
 L & L Engineering  
 6 O Street  
 South Portland, ME 04106  
 207-767-4830

11211.07  
 PROJECT NO.: GDS0706  
 ISSUED: 11/29/07  
 DRAWN BY: CMB  
 CHECKED BY: ---  
 SHEET TITLE:  
 2nd Floor Framing

**S1.2**



**1 SECOND FLOOR AND DECK FRAMING**  
 1/4" = 1'-0"

**BUILDERS DRAWINGS**  
 THESE DRAWINGS MAY NOT SHOW ALL THE INFORMATION NECESSARY FOR THE PROPER CONSTRUCTION OF THIS PROJECT. BY USING THESE DRAWINGS, THE GENERAL CONTRACTOR UNDERSTANDS THAT HE IS RESPONSIBLE FOR ALL MEANS AND METHODS OF CONSTRUCTION AND SHOULD ENGAGE THE SERVICES OF A LICENSED PROFESSIONAL ENGINEER TO VERIFY THE DESIGN AND ENGINEER WHERE THESE TRADES PERTAIN TO THIS PROJECT OR TO THE SAFETY OF ITS OCCUPANTS AND USERS. BY USING THESE DRAWINGS, THE GENERAL CONTRACTOR AGREES TO NOT HOLD THE ARCHITECT LIABLE FOR ANY DAMAGE TO THE OCCUPANTS OR DAMAGE TO ANY PROPERTY CAUSED BY THE GENERAL CONTRACTOR'S NEGLIGENCE, MISUSE OF THESE DRAWINGS, OR WORK PERFORMED BY THE CONTRACTOR.