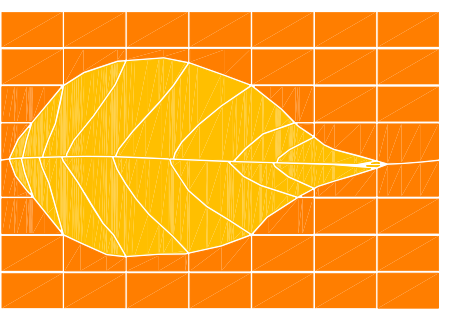


REDFERN HOUSE
FOR REDFERN PROPERTIES LLC.
12 VICTOR RD. PORTLAND, MAINE

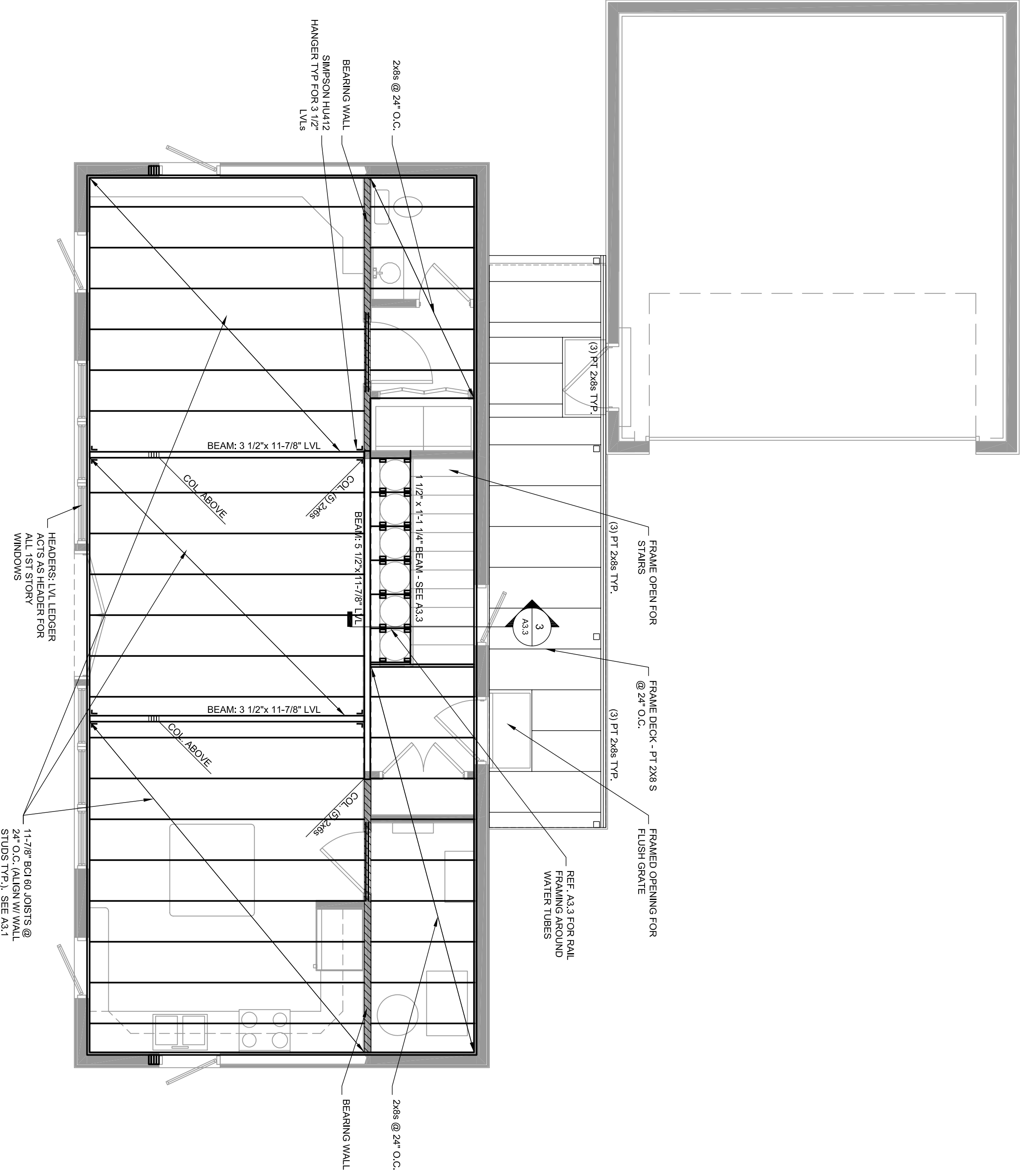


GREEN DESIGN STUDIO
architecture for life
325 main street
yarmouth, maine 04096
f: 207.449.1128
f: 207.449.1139
www.greendesignstudio.com

CONSULTANTS:
STRUCTURAL:
L & L Engineering
6 O Street
South Portland, ME 04106
207-767-4830

PROJECT NO.: GDS0706
ISSUED: 11/29/07
DRAWN BY: CMB
CHECKED BY: ---
SHEET TITLE:
2nd Floor Framing

S1.2



1
SECOND FLOOR AND DECK FRAMING
1/4" = 1'-0"

BUILDERS DRAWINGS
THESE DRAWINGS MAY NOT SHOW ALL THE INFORMATION NECESSARY FOR THE PROPER CONSTRUCTION OF THIS PROJECT. BY USING THESE DRAWINGS, THE GENERAL CONTRACTOR UNDERSTANDS THAT HE IS RESPONSIBLE FOR ALL MEANS AND METHODS OF CONSTRUCTION AND SHOULD ENGAGE THE SERVICES OF A LICENSED ENGINEER OR ARCHITECT TO OBTAIN NECESSARY ENGINEERING WHERE THESE TRADES PERTAIN TO THIS PROJECT OR TO THE SAFETY OF ITS OCCUPANTS AND USERS. BY USING THESE DRAWINGS, THE GENERAL CONTRACTOR AGREES TO NOT HOLD THE ARCHITECT LIABLE FOR ANY DAMAGE TO THE OCCUPANTS OR DAMAGE TO ANY PROPERTY ARISING FROM THE CONSTRUCTION OF THIS PROJECT, WHETHER SUCH DAMAGE IS CAUSED BY THE CONTRACTOR OR WORK PERFORMED BY THE CONTRACTOR.