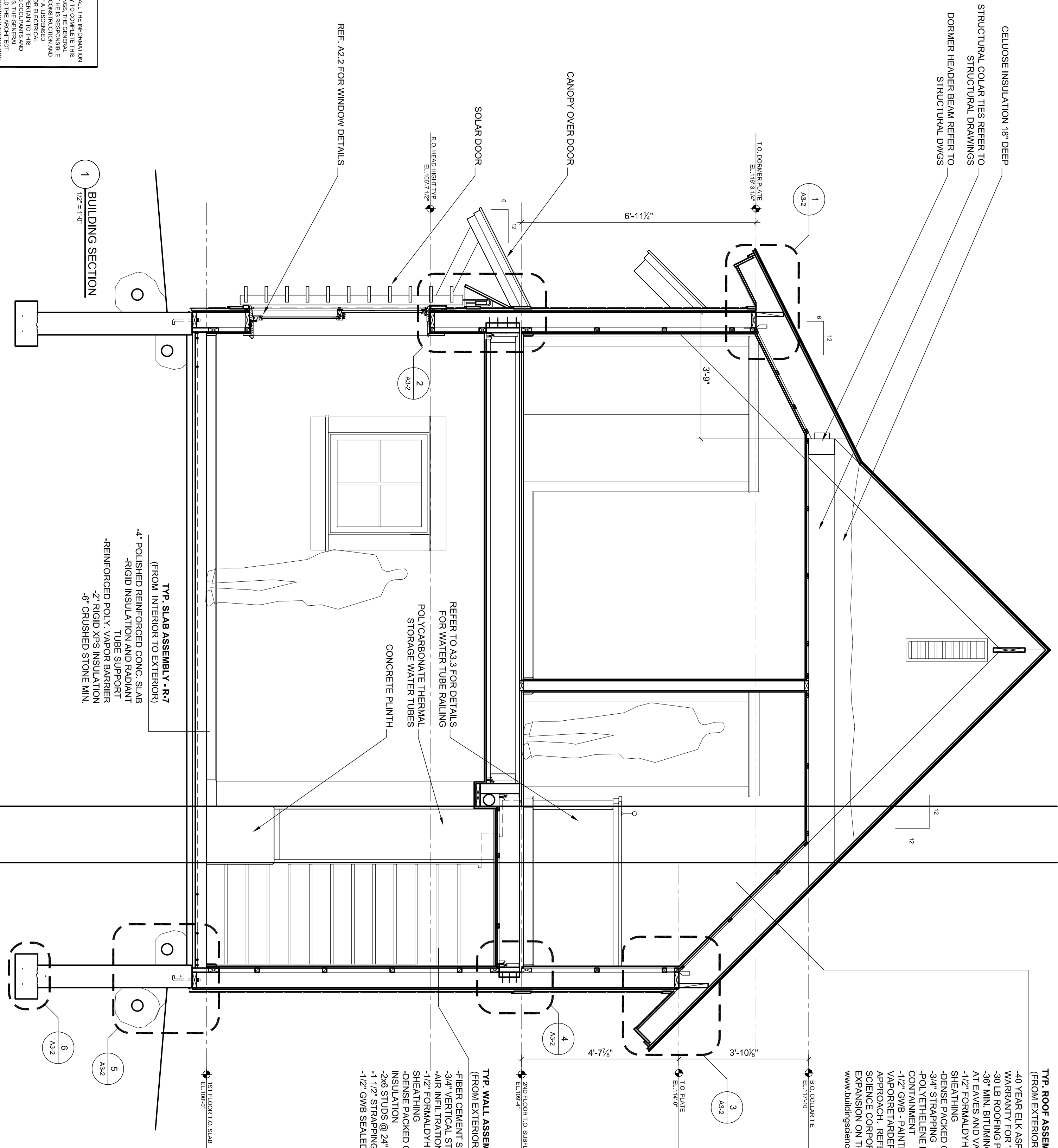


CELULOSE INSULATION 18" DEEP
 STRUCTURAL COLAR TIES REFER TO
 STRUCTURAL DRAWINGS
 DORMER HEADER BEAM REFER TO
 STRUCTURAL DWGS

TYP. ROOF ASSEMBLY - R-45.6 (R-48 AT ATTIC)
 (FROM EXTERIOR TO INTERIOR)
 -40 YEAR ELK ASPHALT SHINGLES
 -WARRANTY FOR HOT ROOF APPLICATION
 -30 LB ROOFING PAPER
 -3/8" MIN. BITUMINOUS ICE AND WATER SHIELD
 AT EAVES AND VALLEYS
 -1/2" FORMALDYHIDE FREE ADVANTECH
 SHEATHING
 -DENSE PACKED CELULOSE INSULATION
 -3/4" STRAPPING
 -POLYETHYLENE MESH FOR CELULOSE
 CONTAINMENT
 -1/2" GWB - PAINTED TREATED AS
 VAPOR BARRIER USING THE AIR DRY WALL
 APPROACH. REFER TO THE BUILDING
 SCIENCE CORPORATION WEBSITE FOR
 EXPANSION ON THIS CONCEPT
 www.buildingscience.com

TYP. WALL ASSEMBLY - R-30
 (FROM EXTERIOR TO INTERIOR)
 -FIBER CEMENT SIDING
 -3/4" VERTICAL STRAPPING
 -AIR INfiltrATION BARRIER (TYPAR)
 -1/2" FORMALDYHIDE FREE EXTERIOR
 SHEATHING
 -DENSE PACKED CELULOSE
 INSULATION
 -2x6 STUDS @ 24" O.C.
 -1 1/2" STRAPPING
 -1/2" GWB SEALED AS VAPOR BARRIER

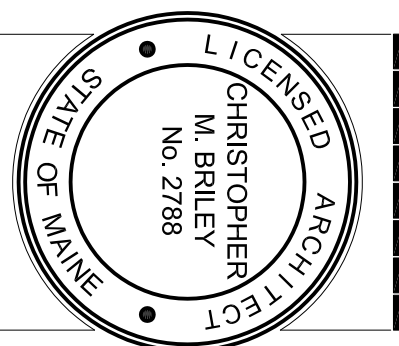
TYP. SLAB ASSEMBLY - R-7
 (FROM INTERIOR TO EXTERIOR)
 -4" POLISHED REINFORCED CONC. SLAB
 -RIGID INSULATION AND RADIANT
 TUBE SUPPORT
 -REINFORCED POLY. VAPOR BARRIER
 -2" RIGID XPS INSULATION
 -6" CRUSHED STONE MIN.



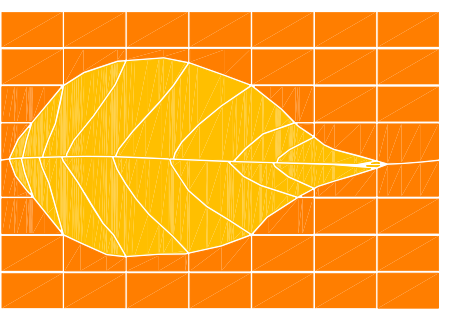
1 BUILDING SECTION
 1/2" = 1'-0"

REF. A2.2 FOR WINDOW DETAILS

BUILDERS DRAWINGS
 THESE DRAWINGS MAY NOT SHOW ALL THE INFORMATION
 NECESSARY FOR THE PROPER CONSTRUCTION OF THIS
 PROJECT. BY USING THESE DRAWINGS, THE GENERAL
 CONTRACTOR UNDERSTANDS THAT HE IS RESPONSIBLE
 FOR ALL MEANS AND METHODS OF CONSTRUCTION AND
 SHOULD ENGAGE THE SERVICES OF A LICENSED
 ENGINEER WHERE THESE TRADES PERTAIN TO THIS
 PROJECT OR TO THE SAFETY OF ITS OCCUPANTS AND
 USERS. BY USING THESE DRAWINGS, THE GENERAL
 CONTRACTOR AGREES TO NOT HOLD THE ARCHITECT
 LIABLE FOR ANY INCOMPLETE OR MISSING INFORMATION,
 OMISSIONS, OR ERRORS, AND TO HOLD THE ARCHITECT
 HARMLESS FROM AND AGAINST ALL SUCH CLAIMS, SUITS,
 DAMAGES, OR WORK PERFORMED BY THE CONTRACTOR.



REDFERN HOUSE
 FOR REDFERN PROPERTIES LLC.
 12 VICTOR RD. PORTLAND, MAINE



GREEN DESIGN STUDIO
 architecture for life
 325 main street
 yarmouth, maine 04096
 t: 207.449.1128
 f: 207.449.1139
 www.greendesignstudio.com

CONSULTANTS:
STRUCTURAL:
 L & L Engineering
 6 O Street
 South Portland, ME 04106
 207-767-4830

PROJECT NO.:	GD.S0706
ISSUED:	11.29.07
DRAWN BY:	CMB
CHECKED BY:	---
SHEET TITLE:	Building Section

A3.1