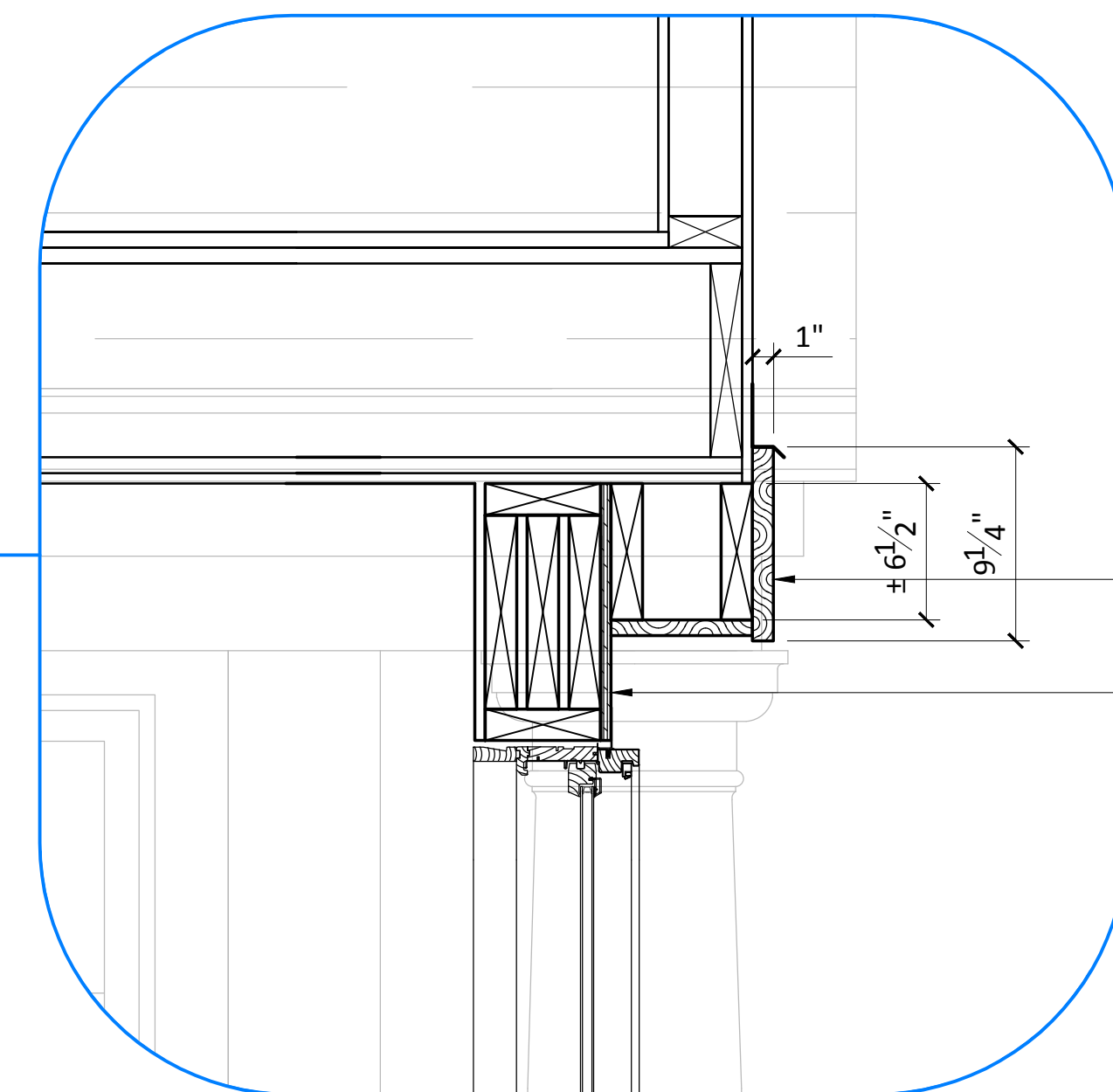
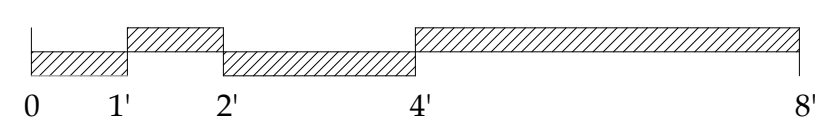
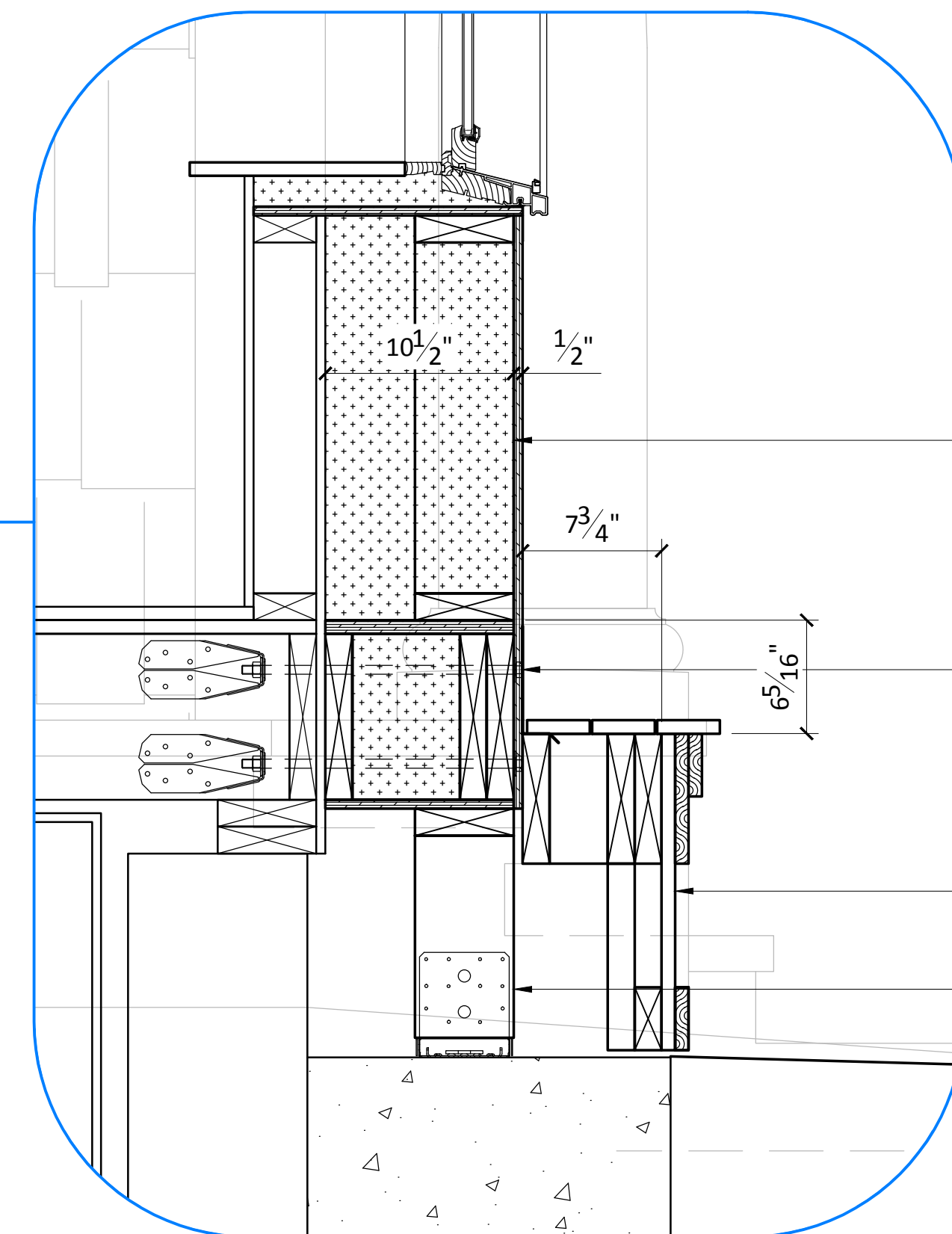


1 SECTION 1-1  
1/2" = 1'-0"



FURR DOWN OVERHANG TO MATCH GARAGE SOFFIT HEIGHT  
NEW WINDOW HEADER



BUMP-OUT ADDITION WITH 2X6 WALLS 16" O.C. AND 1/2" SHEATHING, TAPED FOR AIRTIGHTNESS, WITH SEPARATE WRB UNLESS USING HUBER ZIP SHTG; LOWER PORTION OF ORIGINAL 2X4 WALL TO REMAIN; INSULATE WITH MINERAL WOOL (ROXUL, E.G.) OR OTHER INSULATION TO ±R-36 H•FT<sup>2</sup>/BTU  
2X10 FLOOR FRAMING WITH (2) SIMPSON DTT2 LATERAL CONNECTORS WITH 1/2" HEX BOLT OR THREADED ROD AT (2) LOCATIONS, ATTACHED TO EXISTING HOUSE JOISTS; INSULATE WITH MINERAL WOOL (ROXUL, E.G.), SHEATH UNDERSIDE OF BUMP-OUT WITH HUBER ZIP OR ADVANTECH SHEATHING, ALL SEAMS TAPED FOR AIRTIGHTNESS  
PT 2X8 FRAMING WITH 1X4 MERANTI (OR SIMILAR) DECKING AND AZEK (OR SIMILAR) SKIRTING OF GAPPED VERTICAL BOARDS, ON PT 2X FRAMEWORK  
PT 6X6 ON SIMPSON POST BASE ON EXISTING, SOUND MASONRY FOUNDATION

2 DETAILS  
1 1/2" = 1'-0"