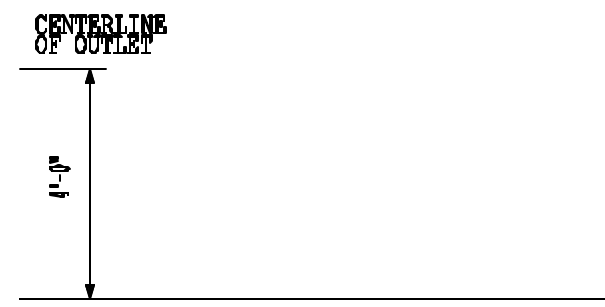


C.

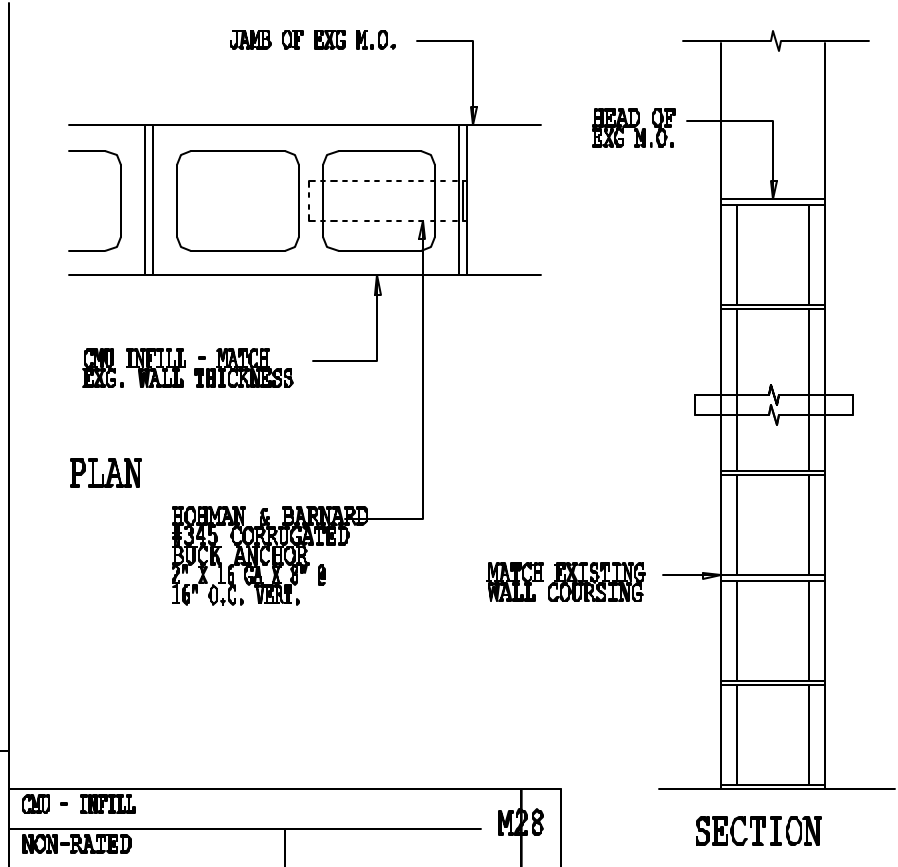
MOUNTING HEIGHTS

REF: A75.1

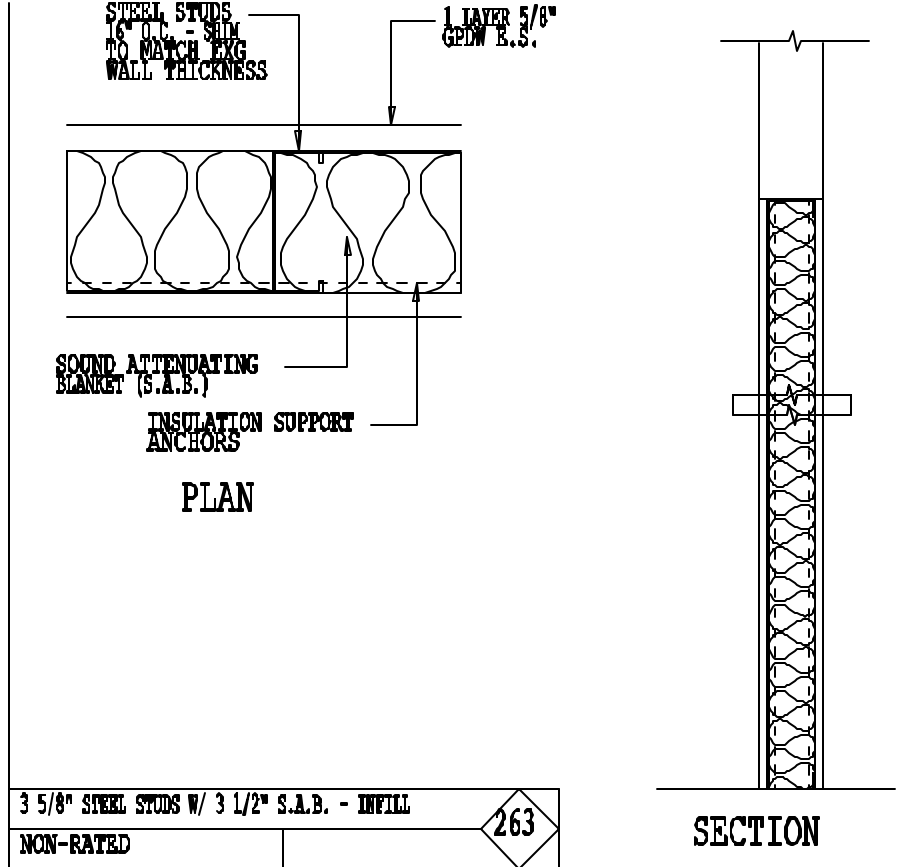
F3



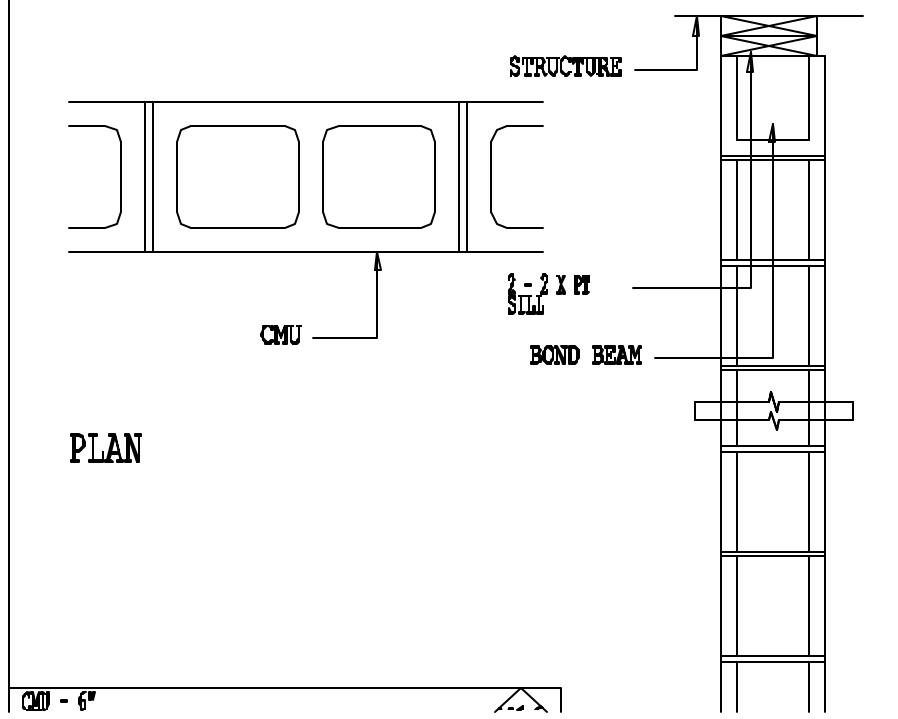
BE FURNISHED BY OWNER



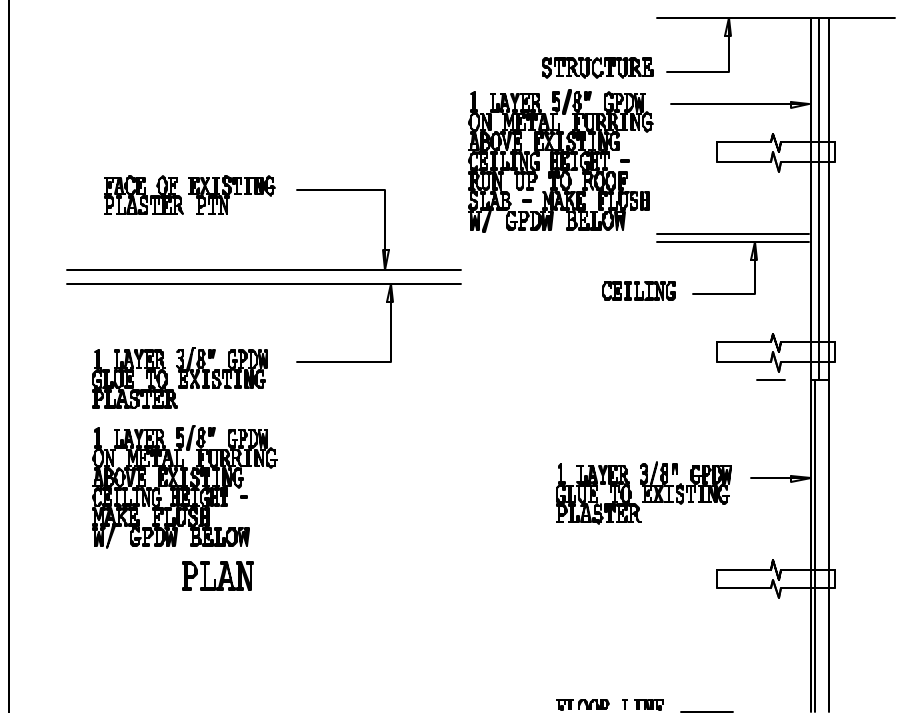
CMU - INFILL	M28
NON-RATED	



3 5/8" STEEL STUDS W/ 3 1/2" S.A.B. - INFILL	263
NON-RATED	



CMU - 6"	
----------	--



FLOOR LINE	
------------	--

Architects + Engineers

HARRIMAN ASSOCIATES

One Auburn Business Park
Auburn, Maine 04210

207.794.3100 tel
207.782.3017 fax
www.harriman.com

Building communities
since 1870

© 2000

Project Title

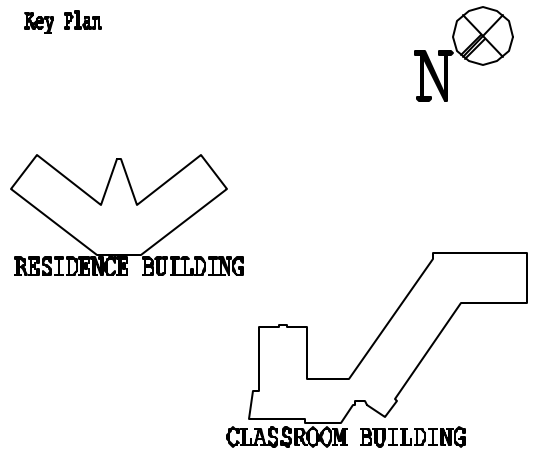
**CHEVERUS
HIGH SCHOOL
PHASE 2 RENOVATIONS**

PORTLAND, MAINE

HA Project No.

00170

Key Plan



RESIDENCE BUILDING

CLASSROOM BUILDING