

BACK COVE ESTATES PORTLAND, MAINE

Half Bath Installations

Units 2 thru 12, 15 thru 17, 19 thru 21, 25 thru 29, 33, 34, 37, 42 thru 46, 50, 51, 54 thru 57 & 62 thru 64

GEORGE A. SCHUMAN ID NUMBER 30067599
Associate Member American Institute of Architects[®]
ARCHITECTURE - CONSTRUCTION MANAGEMENT

www.autodesk.com/revit

CEC/Shoreline Design
Studio/LLC 207-799-0366

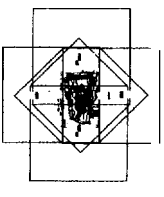
No.	Description	Date

Title Sheet

Project number	Project Number
Date	031505
Drawn by	gas
Checked hv	Charter

Scale
T - 1

BACK COVE ESTATES PORTLAND, MAINE



Window Installations

Units 2 thru 27, 30, 36, 38, 39, 45, 46, 49 thru 51, 55, 56, 58 thru 60 & 62 thru 66

GEORGE A. SCHUMAN ID NUMBER 30067599,
Associate Member American Institute of Architects
ARCHITECTURE - CONSTRUCTION MANAGEMENT

www.autodesk.com/revit

CEC/Shoreline Design
Studio/LLC 207-799-0366

NO.	Description	Date

Title Sheet

Project number 031305
Date 03/3/05
Drawn by gas
Checked by Character

T-1

Scale 1" = 400' 0"

DRAWING LIST

Sheet No. Sheet Name

T-1	Title Sheet
T-2	Drawing List - General Notes
C-1	Area of Work
A-1	A TYPE 1st Floor Plans
A-2	A TYPE 2nd Floor Plans
A-3	B TYPE 1st Floor Plans
A-4	B TYPE 2nd Floor Plans
A-5	B TYPE Unit Elevation
A-6	Window Schedule
A-7	Window Schedule & Wall Section

GENERAL NOTES

1. ALL WORK AND MATERIALS SHALL CONFORM TO THE REQUIREMENTS OF IBC/IRC 2003 INTERNATIONAL BUILDING CODE. THE WORK SHALL ALSO CONFORM TO ALL LOCAL, STATE, NATIONAL, NFPA AND OTHER SAFETY CODES AND ORDINANCES WHICH APPLY.
2. THE CONTRACTOR SHALL FIELD CHECK AND VERIFY ALL EXISTING CONDITIONS AND DIMENSIONS AND SHALL IMMEDIATELY REPORT ANY DISCREPANCIES BETWEEN THE ACTUAL CONDITIONS AND THOSE SHOWN ON THE CONTRACT DRAWINGS TO THE ARCHITECT / DESIGNER / CONSTRUCTION MANAGER BEFORE START OF WORK.
3. WORK INDICATED ON DRAWINGS IS NEW UNLESS SPECIFIED AS EXISTING.
4. THE CONTRACTOR'S WORK PRACTICES, EQUIPMENT AND PERSONNEL PROTECTION MEASURES SHALL CONFORM TO OSHA STANDARDS.
5. THE CONTRACTOR SHALL PROTECT EXISTING SYSTEMS AND SURFACES TO REMAIN.
6. SURFACES INDICATED TO BE PAINTED SHALL BE PREPARED IN ACCORDANCE WITH MANUFACTURERS WRITTEN INSTRUCTIONS.
7. ELECTRICAL INSTALLATION SHALL COMPLY WITH THE REQUIREMENTS OF THE LATEST EDITION OF THE NATIONAL ELECTRICAL CODE (NEC), NFPA AND ALL STATE AND LOCAL CODES.
8. ALL EQUIPMENT, MATERIALS, ITEMS AND PRODUCTS ARE TO BE PROVIDED, DELIVERED, STORED, PROTECTED, HANDLED AND INSTALLED IN ACCORDANCE WITH THE LATEST WRITTEN INSTRUCTIONS OF THE MANUFACTURER OR PRODUCER.
9. THE WORD "PROVIDE" MEANS THE CONTRACTOR SHALL PROVIDE ALL LABOR, MATERIALS, AND EQUIPMENT TO FURNISH AND INSTALL AND TO COMPLETE AND MAKE FULLY OPERATIONAL.
10. COORDINATE THE WORK OF ALL TRADES AND SUBCONTRACTORS.
11. ALL DIMENSIONS ARE FROM FINISH FACE TO FINISH FACE UNLESS OTHERWISE INDICATED.

GEORGE A. SCHUMAN ID NUMBER 30067599
 Associate Member American Institute of Architects[®]
 ARCHITECTURE - CONSTRUCTION MANAGEMENT

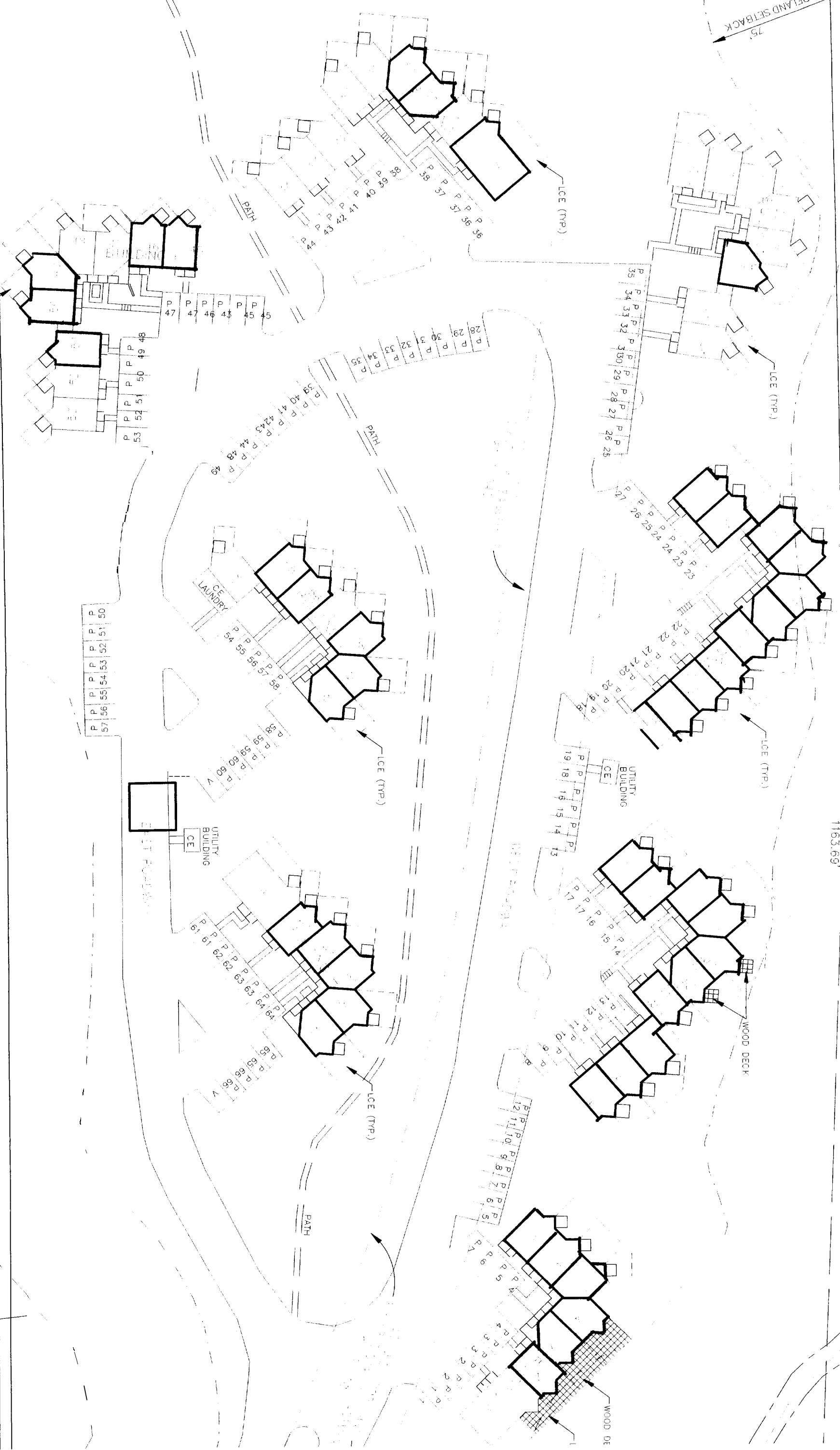
www.autodesk.com/evit

Shoreline Design Studio,
LLC 207-799-0366

No.	Description	Date

DRAWING LIST - GEN NOTES		
Project number	20053	T-2
Date	031405	
Drawn by	gas	
Checked by	Checker	Scale

SHORELAND SETBACK
75'



1163.69'

GEORGE A. SCHUMAN ID NUMBER 30067599
 Associate Member American Institute of Architects
 ARCHITECTURE - CONSTRUCTION MANAGEMENT
 www.autodesk.com/revit

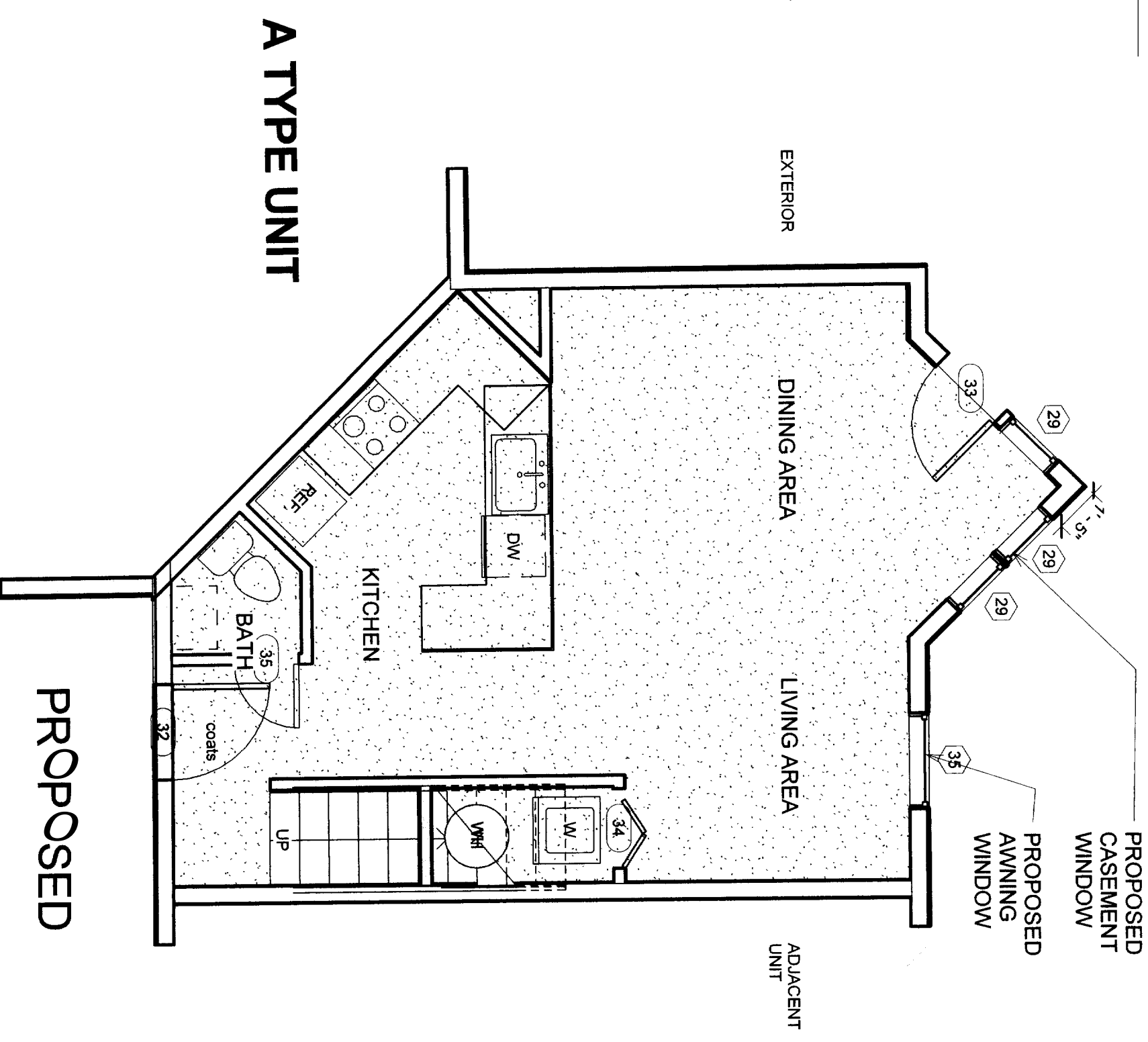
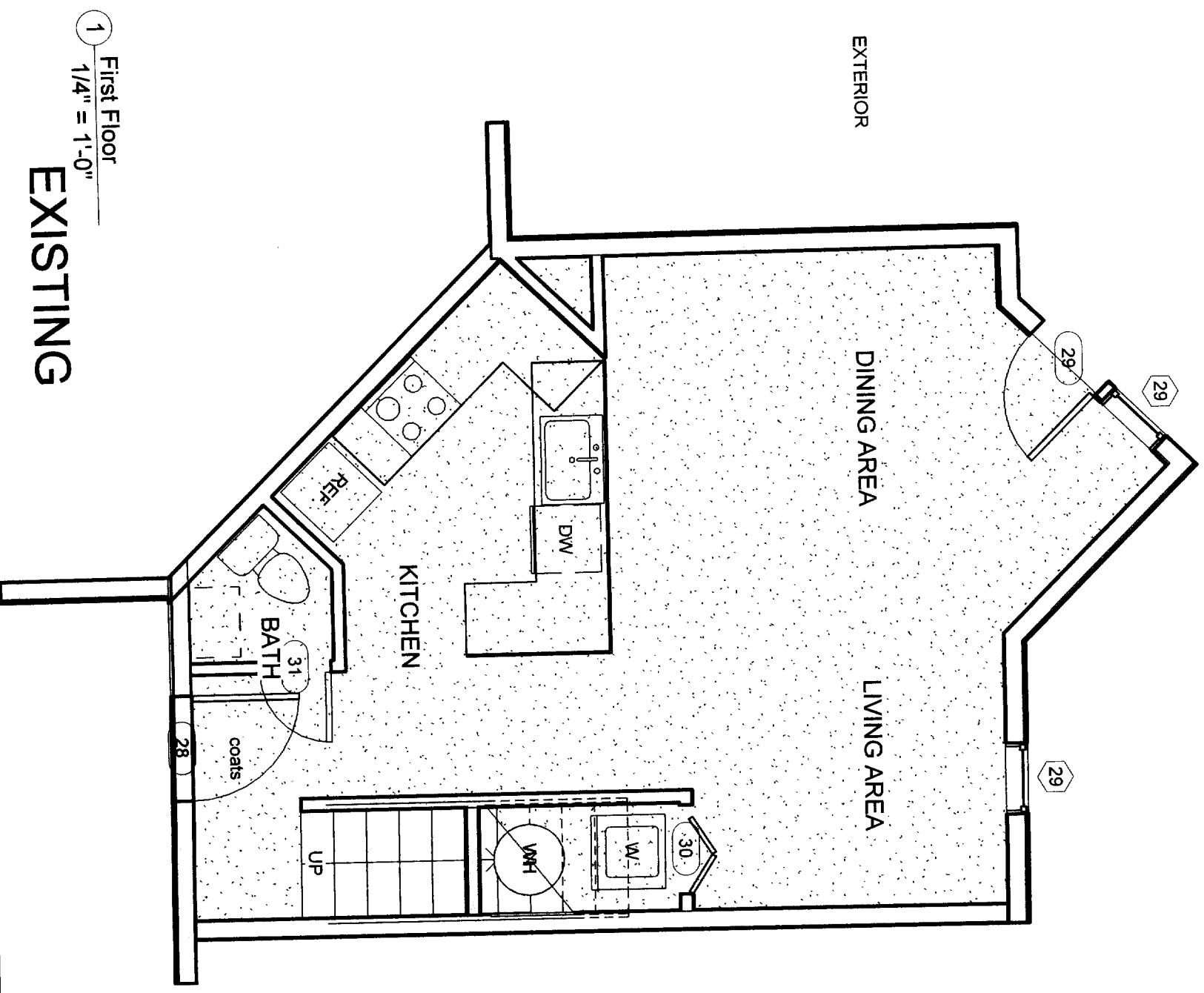
CEC/Shoreline Design
Studio/LLC 207-799-0366

No.	Description	Date
22229	W 977.64'	N/F

AREA OF WORK MAP

Project number 031405
 Project Number
 Date
 Drawn by gas
 Checked by Checker Norton
 Scale 1/4" = 1'-0"

C - 1



GEORGE A. SCHUMAN ID NUMBER 30067599
 Associate Member American Institute of Architects
 ARCHITECTURE - CONSTRUCTION MANAGEMENT
 www.autodesk.com/evit

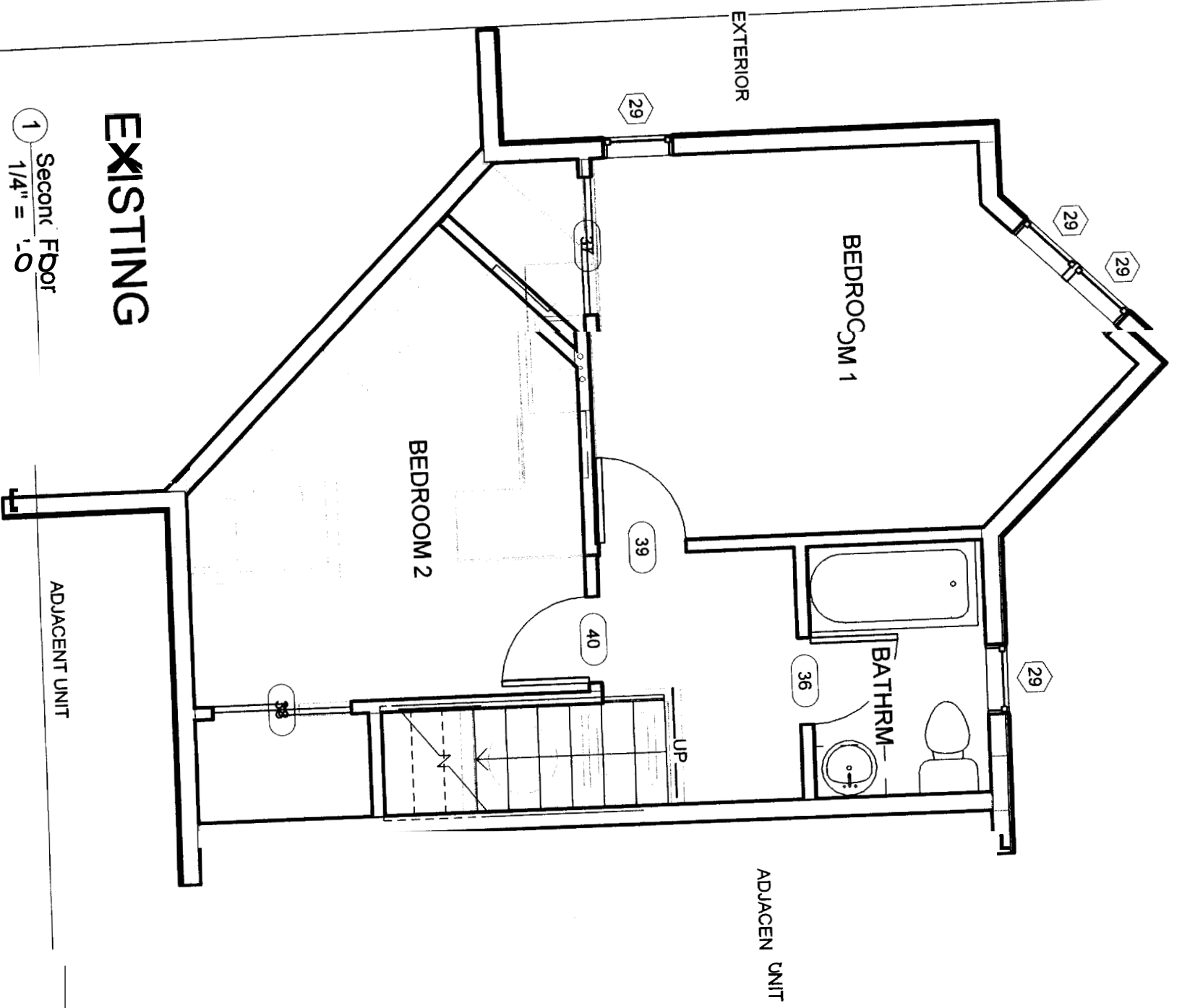
Shoreline Design Studio
 207-799-0366

No.	Description	Date

A TYPE 1st Floor Plans

Project number 20053
 Date 031405
 Drawn by gas
 Checked by Checker
 Scale 1/4" = 1'-0"





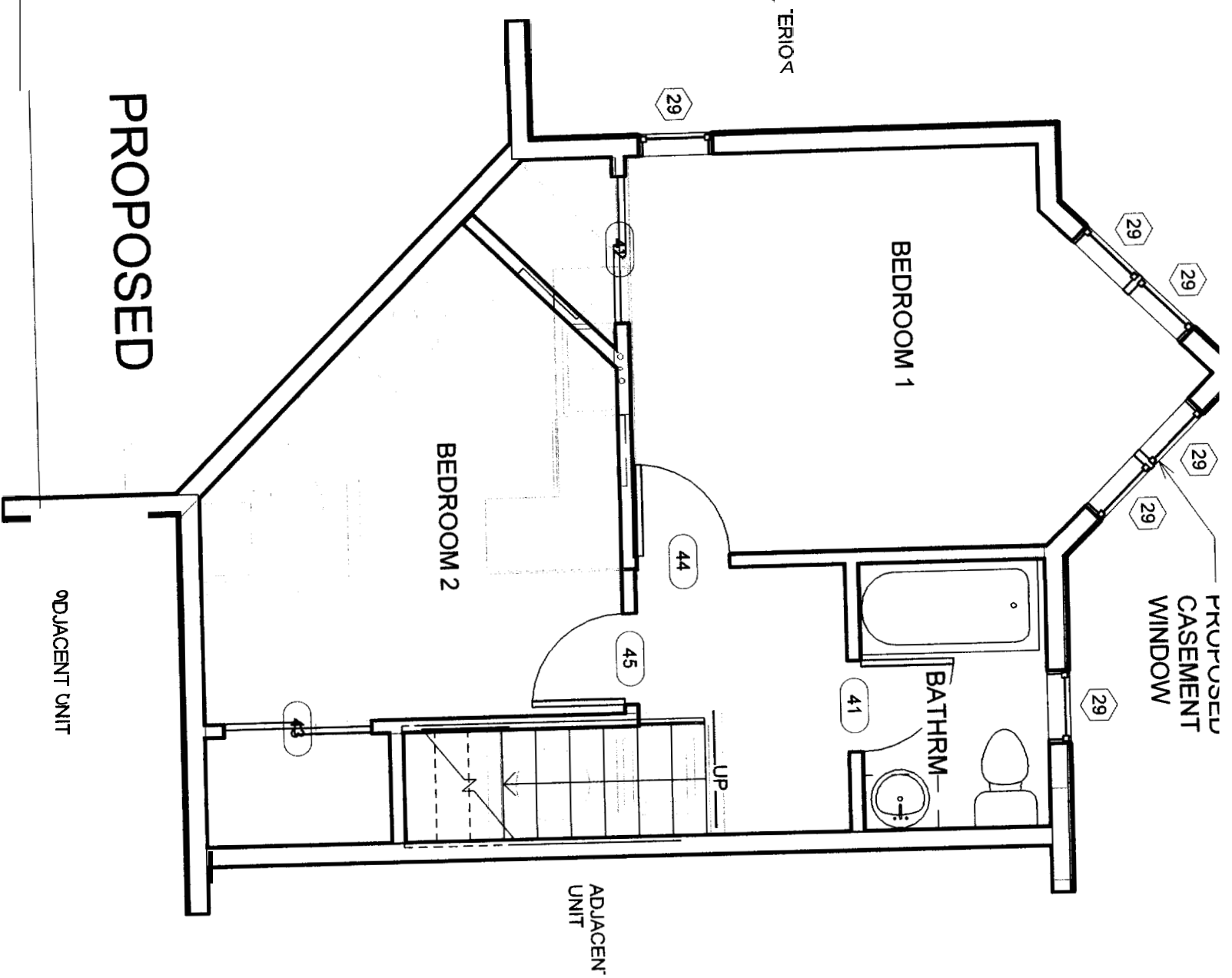
EXISTING

1 Second Floor
1/4" = 1'-0"

ADJACENT UNIT

ADJACENT UNIT

A TYPE UNIT



PROPOSED

ADJACENT UNIT

PROPOSED CASEMENT WINDOW

ADJACENT UNIT

GEORGE A. SCHUMAN ID NUMBER 30067599
Associate Member American Institute of Architects
ARCHITECTURE - CONSTRUCTION MANAGEMENT

www.autodesk.com/revit

Shoreline Deigo St dio
207-799-036

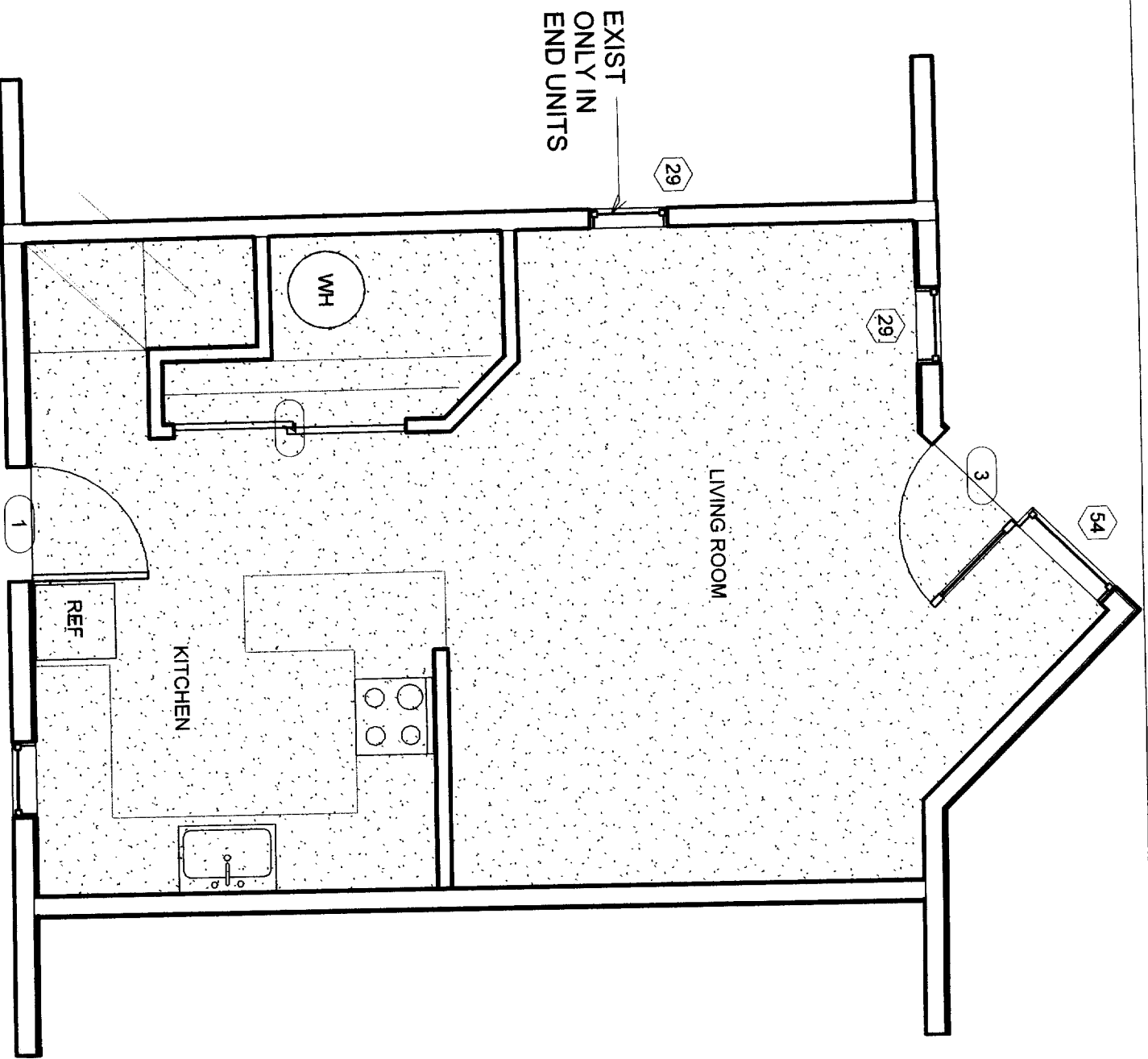
No.	Description	Date

TYPE A 2nd Floor Plans

Project number 20053
Date 031405
Drawn by gas
Checked by Checker

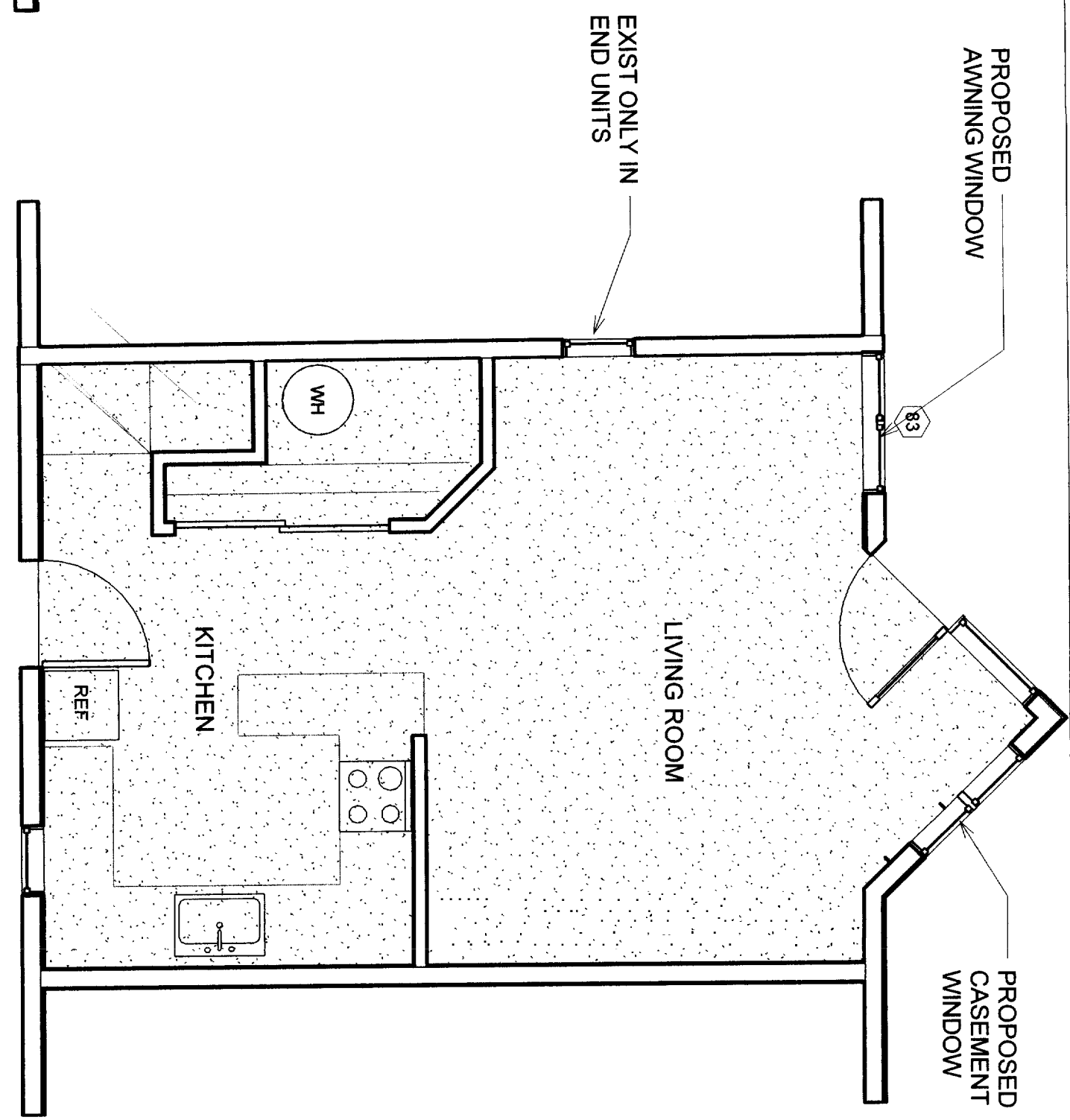
A-

Scale 1/4" = 1'



FIRST FLOOR PLAN

EXISTING



B TYPE UNIT

PROPOSED

GEORGE A. SCHUMAN ID NUMBER 30067599, Associate Member American Institute of Architects ARCHITECTURE - CONSTRUCTION MANAGEMENT

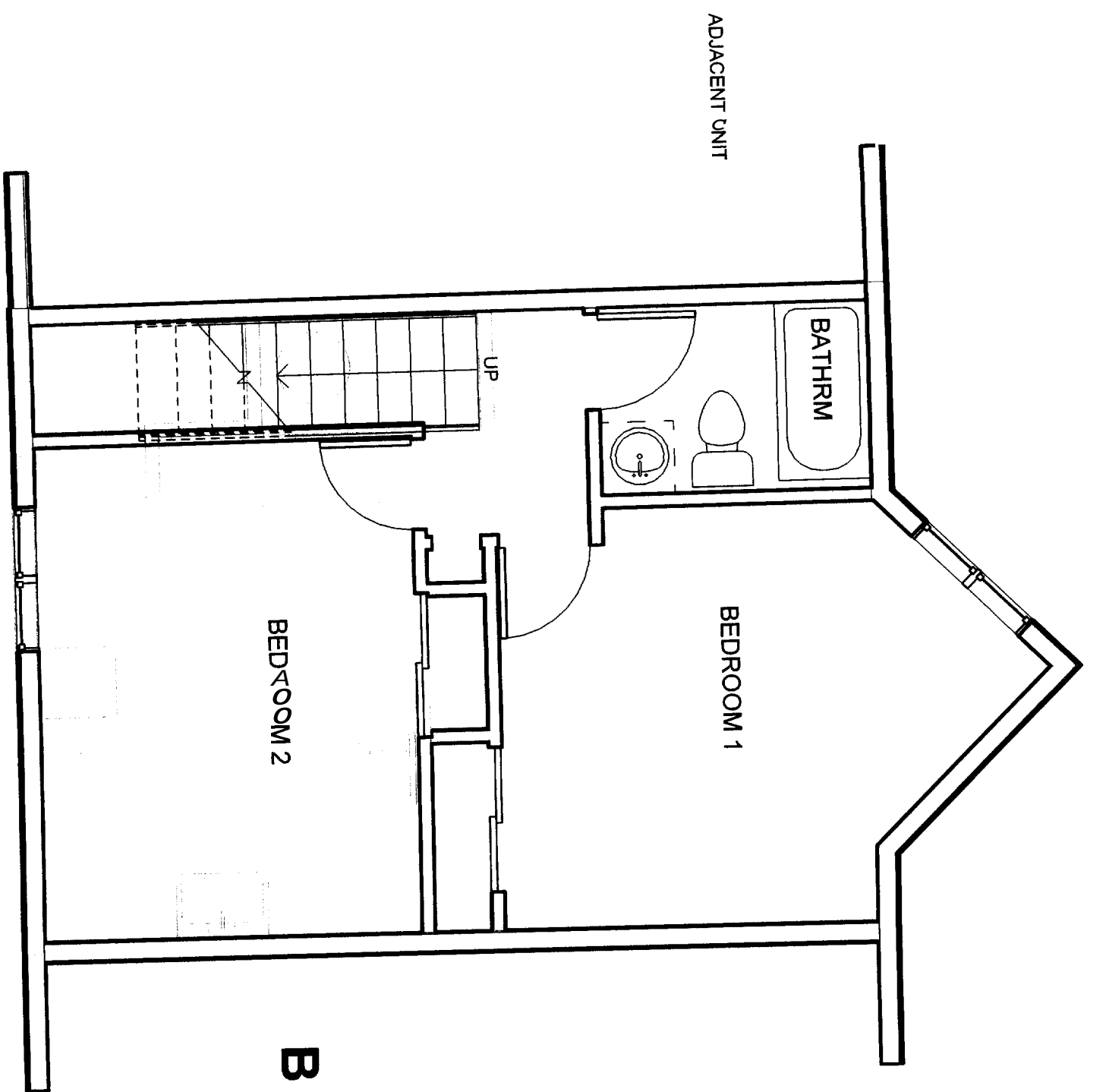
www.autodesk.com/evit

CEC/Shoreline Design Studio/LLC 207-799-0366

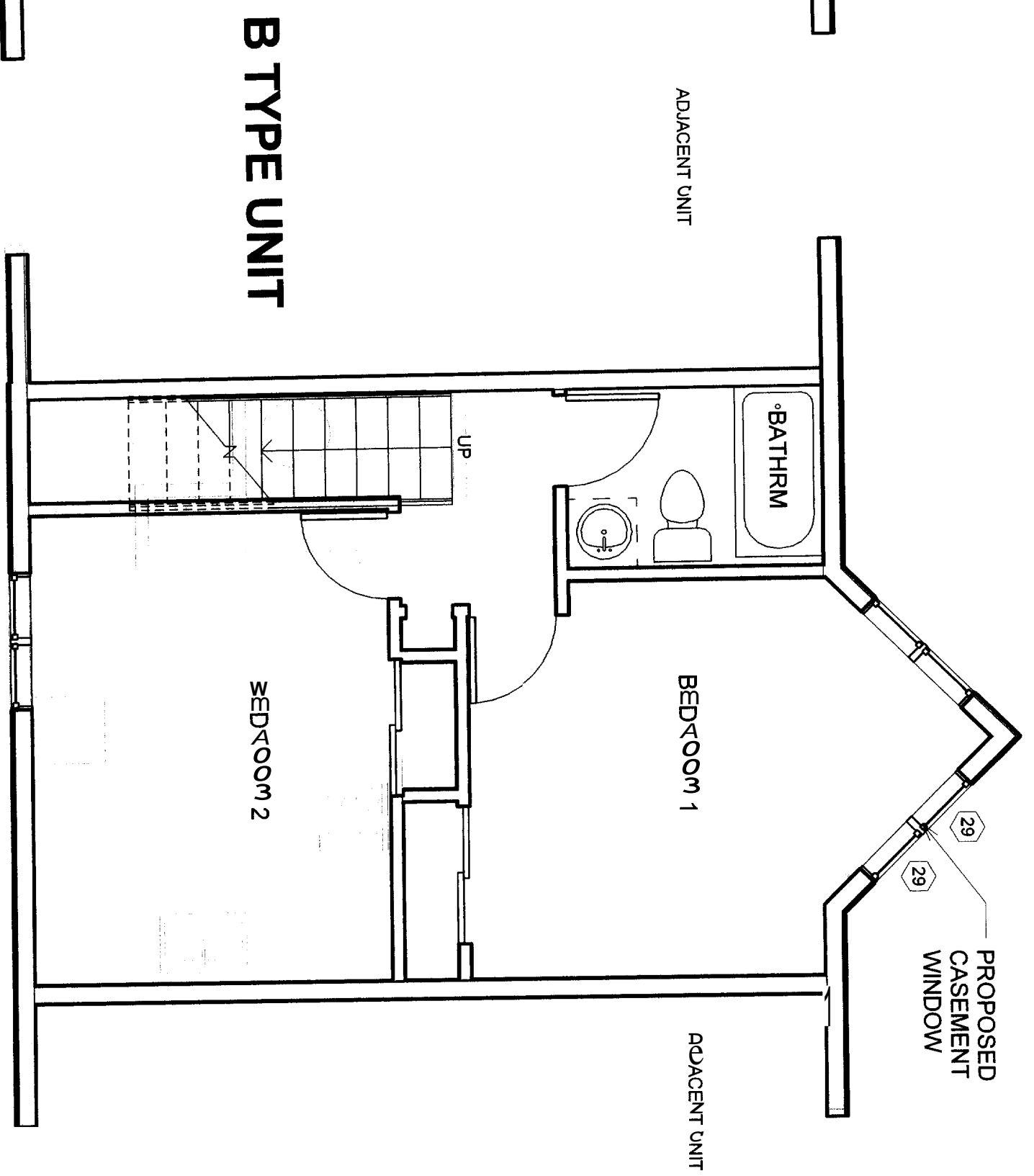
No.	Description	Date

B TYPE 1st Floor Plan	
Project number	Project Number
Date	031405
Drawn by	gas
Checked by	Checker
Scale 1/4" = 1'-0"	

A - 3



EXISTING



PROPOSED

BEDROOM 2

BEDROOM 1

BATHRM

ADJACENT UNIT

ADJACENT UNIT

B TYPE UNIT

BEDROOM 1

BEDROOM 2

BATHRM

ADJACENT UNIT

PROPOSED
CASEMENT
WINDOW

1 Copy of Second Floor
1/4" = 1'-0"

GEORGE A. SCHUMAN ID NUMBER 30067599
Associate Member American Institute of Architects
ARCHITECTURE - CONSTRUCTION MANAGEMENT
www.autodesk.com/evit

CEC/Shoreline Design
Studio/LLC 207-799-0366

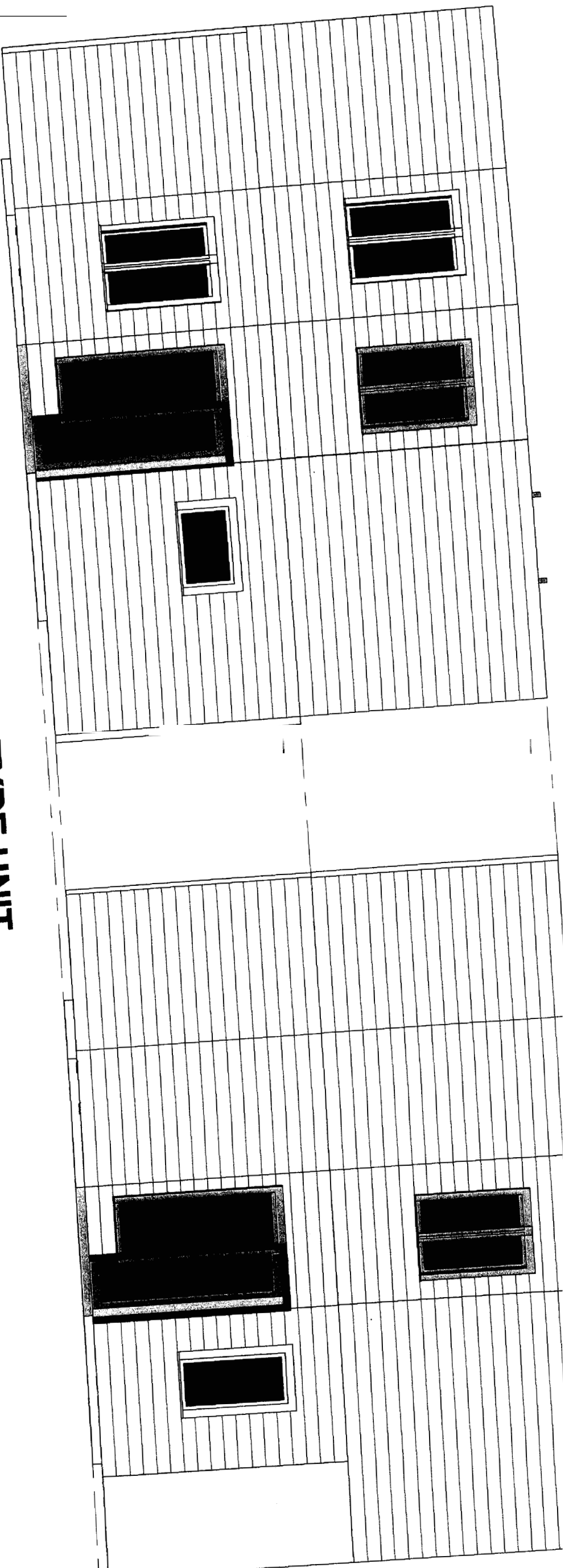
No.	Description	Date

B TYPE 2ND Floor Plan

Project number	Project Number
Date	031405
Drawn by	gas
Checked by	Checker

Scale 1/4" = 1'-0"

A - 4



PRUF SED

B TYPE UNIT

EXISTING

North
1/4" = -0"

Found
9' -

First
0
Found
-0'

GEORGE A. SCHUMAN ID NUMBER 30067599
Associate Member American Institute of Architects
ARCHITECTURE - CONSTRUCTION MANAGEMENT

www.autodesk.com/revit

CEC/Shoreline Design
Studio/LLC 207-799-0366

No.	Description	Date

B TYPE UNIT ELEVATION

A-5

Project number 031405 Project Number
Date gas
Drawn by Checker
Checked by
Scale 1/4" = 1'-0"

WINDOW SCHEDULE		BACK COVE ESTATES		3/14/05		1		
ID	BLDG UNIT NO	UNIT TYPE	LEVEL	ROOM	TYPE	MANUF.	SERIES MODEL	COMMENTS
1A	2B	1	DINING	DOUBLE	CASEMENT	ANDERSON	400 CW 24 LR	vinyl clad wood, low E
1A	2B	1	LIVING	SINGLE	AWNING	ANDERSON	400 AXW451	vinyl clad wood, low E
2A	2B	1	LIVING	DOUBLE	CASEMENT	ANDERSON	400 CW 24 LR	vinyl clad wood, low E
3A	2B	1	BEDRM 1	DOUBLE	CASEMENT	ANDERSON	400 AXW451	vinyl clad wood, low E
4A	3A	1	LIVING	SINGLE	AWNING	ANDERSON	400 AXW451	vinyl clad wood, low E
5A	3A	1	DINING	DOUBLE	CASEMENT	ANDERSON	400 CW 24 LR	vinyl clad wood, low E
6A	3A	1	DINING	DOUBLE	CASEMENT	ANDERSON	400 CW 24 LR	vinyl clad wood, low E
7A	4A	1	DINING	DOUBLE	CASEMENT	ANDERSON	400 CW 24 LR	vinyl clad wood, low E
8A	4A	1	DINING	DOUBLE	CASEMENT	ANDERSON	400 CW 24 LR	vinyl clad wood, low E
9A	4A	1	DINING	DOUBLE	CASEMENT	ANDERSON	400 CW 24 LR	vinyl clad wood, low E
10A	5A	1	DINING	DOUBLE	CASEMENT	ANDERSON	400 CW 24 LR	vinyl clad wood, low E
11A	5A	1	DINING	DOUBLE	CASEMENT	ANDERSON	400 CW 24 LR	vinyl clad wood, low E
12A	6B	1	DINING	DOUBLE	CASEMENT	ANDERSON	400 AXW451	vinyl clad wood, low E
13A	6B	1	DINING	DOUBLE	CASEMENT	ANDERSON	400 CW 24 LR	vinyl clad wood, low E
14A	6B	1	BEDRM 1	DOUBLE	CASEMENT	ANDERSON	400 CW 24 LR	vinyl clad wood, low E
15A	7B	1	DINING	DOUBLE	CASEMENT	ANDERSON	400 AXW451	vinyl clad wood, low E
16A	7B	1	DINING	DOUBLE	CASEMENT	ANDERSON	400 CW 24 LR	vinyl clad wood, low E
17A	7B	1	DINING	DOUBLE	CASEMENT	ANDERSON	400 CW 24 LR	vinyl clad wood, low E
18A	7B	1	DINING	DOUBLE	CASEMENT	ANDERSON	400 CW 24 LR	vinyl clad wood, low E
19B	8B	1	DINING	DOUBLE	CASEMENT	ANDERSON	400 CW 24 LR	vinyl clad wood, low E
20B	8B	1	LIVING	SINGLE	AWNING	ANDERSON	400 AXW451	vinyl clad wood, low E
21B	8B	1	BEDRM 1	DOUBLE	CASEMENT	ANDERSON	400 CW 24 LR	vinyl clad wood, low E
22B	9B	1	DINING	DOUBLE	CASEMENT	ANDERSON	400 CW 24 LR	vinyl clad wood, low E
23B	9B	1	LIVING	SINGLE	AWNING	ANDERSON	400 AXW451	vinyl clad wood, low E
24B	9B	1	BEDRM 1	DOUBLE	CASEMENT	ANDERSON	400 CW 24 LR	vinyl clad wood, low E
25B	10B	1	DINING	DOUBLE	CASEMENT	ANDERSON	400 AXW451	vinyl clad wood, low E
26B	10B	1	DINING	DOUBLE	CASEMENT	ANDERSON	400 CW 24 LR	vinyl clad wood, low E
27B	10B	1	BEDRM 1	DOUBLE	CASEMENT	ANDERSON	400 CW 24 LR	vinyl clad wood, low E
28B	11B	1	DINING	DOUBLE	CASEMENT	ANDERSON	400 AXW451	vinyl clad wood, low E
29B	11B	1	DINING	DOUBLE	CASEMENT	ANDERSON	400 CW 24 LR	vinyl clad wood, low E
30B	11B	1	BEDRM 1	DOUBLE	CASEMENT	ANDERSON	400 CW 24 LR	vinyl clad wood, low E
31B	12A	1	LIVING	SINGLE	AWNING	ANDERSON	400 AXW451	vinyl clad wood, low E
32B	12A	1	DINING	DOUBLE	CASEMENT	ANDERSON	400 CW 24 LR	vinyl clad wood, low E
33B	12A	1	BEDRM 1	DOUBLE	CASEMENT	ANDERSON	400 AXW451	vinyl clad wood, low E
34B	13A	1	LIVING	SINGLE	AWNING	ANDERSON	400 CW 24 LR	vinyl clad wood, low E
35B	13A	1	DINING	DOUBLE	CASEMENT	ANDERSON	400 CW 24 LR	vinyl clad wood, low E
36B	13A	1	BEDRM 1	DOUBLE	CASEMENT	ANDERSON	400 AXW451	vinyl clad wood, low E
37B	14A	1	LIVING	SINGLE	AWNING	ANDERSON	400 CW 24 LR	vinyl clad wood, low E
38B	14A	1	DINING	DOUBLE	CASEMENT	ANDERSON	400 CW 24 LR	vinyl clad wood, low E
39B	14A	1	BEDRM 1	DOUBLE	CASEMENT	ANDERSON	400 CW 24 LR	vinyl clad wood, low E
40B	15B	1	DINING	DOUBLE	CASEMENT	ANDERSON	400 AXW451	vinyl clad wood, low E
41B	15B	1	LIVING	SINGLE	AWNING	ANDERSON	400 CW 24 LR	vinyl clad wood, low E
42B	15B	1	BEDRM 1	DOUBLE	CASEMENT	ANDERSON	400 CW 24 LR	vinyl clad wood, low E
43B	16B	1	DINING	DOUBLE	CASEMENT	ANDERSON	400 AXW451	vinyl clad wood, low E
44B	16B	1	LIVING	SINGLE	AWNING	ANDERSON	400 CW 24 LR	vinyl clad wood, low E
45B	16B	1	BEDRM 1	DOUBLE	CASEMENT	ANDERSON	400 CW 24 LR	vinyl clad wood, low E
46B	17B	1	DINING	DOUBLE	CASEMENT	ANDERSON	400 AXW451	vinyl clad wood, low E
47B	17B	1	LIVING	SINGLE	AWNING	ANDERSON	400 CW 24 LR	vinyl clad wood, low E
48B	17B	1	BEDRM 1	DOUBLE	CASEMENT	ANDERSON	400 CW 24 LR	vinyl clad wood, low E
49C	18B+	1	DINING	DOUBLE	CASEMENT	ANDERSON	400 CW 24 LR	vinyl clad wood, low E
50C	18B+	1	LIVING	SINGLE	AWNING	ANDERSON	400 AXW451	vinyl clad wood, low E
51C	18B+	1	BEDRM 1	DOUBLE	CASEMENT	ANDERSON	400 CW 24 LR	vinyl clad wood, low E
52C	19B	1	DINING	DOUBLE	CASEMENT	ANDERSON	400 AXW451	vinyl clad wood, low E
53C	19B	1	LIVING	SINGLE	AWNING	ANDERSON	400 CW 24 LR	vinyl clad wood, low E
54C	19B	1	BEDRM 1	DOUBLE	CASEMENT	ANDERSON	400 CW 24 LR	vinyl clad wood, low E
55C	20B	1	DINING	DOUBLE	CASEMENT	ANDERSON	400 AXW451	vinyl clad wood, low E
56C	20B	1	LIVING	SINGLE	AWNING	ANDERSON	400 CW 24 LR	vinyl clad wood, low E
57C	20B	1	BEDRM 1	DOUBLE	CASEMENT	ANDERSON	400 CW 24 LR	vinyl clad wood, low E
58C	21B	1	DINING	DOUBLE	CASEMENT	ANDERSON	400 CW 24 LR	vinyl clad wood, low E
59C	21B	1	LIVING	SINGLE	AWNING	ANDERSON	400 AXW451	vinyl clad wood, low E

No.	Description	Date
60C	21 B 2 BEDRM 1 DOUBLE CASEMENT ANDERSON	400 CW 24 LR vinyl clad wood, low E
61C	22 A 1 LIVING SINGLE AWNING ANDERSON	400 AXW451 vinyl clad wood, low E
62C	22 A 2 BEDRM 1 DOUBLE CASEMENT ANDERSON	400 CW 24 LR vinyl clad wood, low E
63C	22 A 1 LIVING DOUBLE CASEMENT ANDERSON	400 CW 24 LR vinyl clad wood, low E
64C	23 A 1 LIVING SINGLE AWNING ANDERSON	400 AXW451 vinyl clad wood, low E
65C	23 A 2 BEDRM 1 DOUBLE CASEMENT ANDERSON	400 CW 24 LR vinyl clad wood, low E
66C	23 A 2 BEDRM 1 DOUBLE CASEMENT ANDERSON	400 CW 24 LR vinyl clad wood, low E
67C	24 A 1 LIVING SINGLE AWNING ANDERSON	400 AXW451 vinyl clad wood, low E
68C	24 A 1 DINING DOUBLE CASEMENT ANDERSON	400 CW 24 LR vinyl clad wood, low E
69C	24 A 2 BEDRM 1 DOUBLE CASEMENT ANDERSON	400 CW 24 LR vinyl clad wood, low E
70C	25 B 1 LIVING DOUBLE CASEMENT ANDERSON	400 AXW451 vinyl clad wood, low E
71C	25 B 2 BEDRM 1 DOUBLE CASEMENT ANDERSON	400 CW 24 LR vinyl clad wood, low E
72C	25 B 1 LIVING DOUBLE CASEMENT ANDERSON	400 CW 24 LR vinyl clad wood, low E
73C	26 B 1 DINING SINGLE AWNING ANDERSON	400 AXW451 vinyl clad wood, low E
74C	26 B 2 BEDRM 1 DOUBLE CASEMENT ANDERSON	400 CW 24 LR vinyl clad wood, low E
75C	26 B 1 LIVING DOUBLE CASEMENT ANDERSON	400 CW 24 LR vinyl clad wood, low E
76C	27 B 2 BEDRM 1 DOUBLE CASEMENT ANDERSON	400 CW 24 LR vinyl clad wood, low E
77C	27 B 1 LIVING SINGLE AWNING ANDERSON	400 AXW451 vinyl clad wood, low E
78C	27 B 2 BEDRM 1 DOUBLE CASEMENT ANDERSON	400 CW 24 LR vinyl clad wood, low E
79D	30 A 1 LIVING SINGLE AWNING ANDERSON	400 AXW451 vinyl clad wood, low E
80D	30 A 1 DINING DOUBLE CASEMENT ANDERSON	400 CW 24 LR vinyl clad wood, low E
81D	30 A 2 BEDRM 1 DOUBLE CASEMENT ANDERSON	400 CW 24 LR vinyl clad wood, low E
82E	36 C 36 C	
83E	36 C 36 C	
84E	38 A 38 A	
85E	38 A 1 LIVING SINGLE AWNING ANDERSON	400 AXW451 vinyl clad wood, low E
86E	38 A 2 BEDRM 1 DOUBLE CASEMENT ANDERSON	400 CW 24 LR vinyl clad wood, low E
87E	38 A 1 LIVING DOUBLE CASEMENT ANDERSON	400 AXW451 vinyl clad wood, low E
88E	39 A 39 A	
89E	39 A 1 LIVING DOUBLE CASEMENT ANDERSON	400 CW 24 LR vinyl clad wood, low E
90E	39 A 2 BEDRM 1 DOUBLE CASEMENT ANDERSON	400 CW 24 LR vinyl clad wood, low E
91F	45 B 45 B	
92F	45 B 1 LIVING SINGLE AWNING ANDERSON	400 AXW451 vinyl clad wood, low E
93F	45 B 2 BEDRM 1 DOUBLE CASEMENT ANDERSON	400 CW 24 LR vinyl clad wood, low E
94F	46 B 46 B	
95F	46 B 1 LIVING SINGLE AWNING ANDERSON	400 AXW451 vinyl clad wood, low E
96F	46 B 2 BEDRM 1 DOUBLE CASEMENT ANDERSON	400 CW 24 LR vinyl clad wood, low E
97F	49 A 49 A	
98F	49 A 1 LIVING SINGLE AWNING ANDERSON	400 AXW451 vinyl clad wood, low E
99F	49 A 2 BEDRM 1 DOUBLE CASEMENT ANDERSON	400 CW 24 LR vinyl clad wood, low E
100F	50 B 50 B	
101F	50 B 1 LIVING SINGLE AWNING ANDERSON	400 AXW451 vinyl clad wood, low E
102F	50 B 2 BEDRM 1 DOUBLE CASEMENT ANDERSON	400 CW 24 LR vinyl clad wood, low E
103F	51 B 51 B	
104F	51 B 1 LIVING SINGLE AWNING ANDERSON	400 AXW451 vinyl clad wood, low E
105F	51 B 2 BEDRM 1 DOUBLE CASEMENT ANDERSON	400 CW 24 LR vinyl clad wood, low E
106G	55 B 55 B	
107G	55 B 1 LIVING SINGLE AWNING ANDERSON	400 AXW451 vinyl clad wood, low E
108G	55 B 2 BEDRM 1 DOUBLE CASEMENT ANDERSON	400 CW 24 LR vinyl clad wood, low E
109G	56 B 56 B	
110G	56 B 1 LIVING SINGLE AWNING ANDERSON	400 AXW451 vinyl clad wood, low E
111G	56 B 2 BEDRM 1 DOUBLE CASEMENT ANDERSON	400 CW 24 LR vinyl clad wood, low E
112G	58 A 58 A	
113G	58 A 1 LIVING SINGLE AWNING ANDERSON	400 AXW451 vinyl clad wood, low E
114G	58 A 2 BEDRM 1 DOUBLE CASEMENT ANDERSON	400 CW 24 LR vinyl clad wood, low E
115G	59 A 59 A	
116G	59 A 1 LIVING SINGLE AWNING ANDERSON	400 AXW451 vinyl clad wood, low E
117G	59 A 2 BEDRM 1 DOUBLE CASEMENT ANDERSON	400 CW 24 LR vinyl clad wood, low E
118G	60 A 60 A	
119G	60 A 1 LIVING SINGLE AWNING ANDERSON	400 AXW451 vinyl clad wood, low E
120G	60 A 2 BEDRM 1 DOUBLE CASEMENT ANDERSON	400 CW 24 LR vinyl clad wood, low E

Window Schedule

Project number 20053

Date 031405

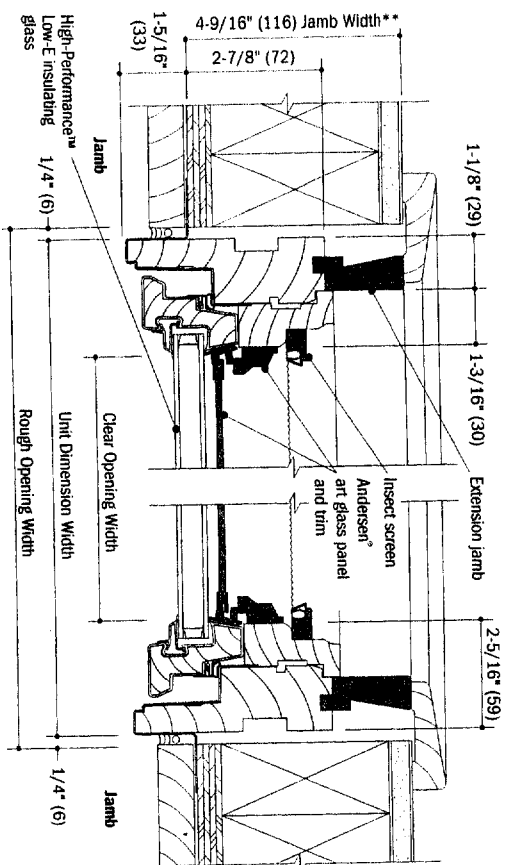
Drawn by gas

Checked by Checker

GEORGE A. SCHUMAN ID NUMBER 30067599
 Associate Member American Institute of Architects
 ARCHITECTURE - CONSTRUCTION MANAGEMENT
 www.autodesk.com/levit

Shoreline Design Studio,
 LLC 207-799-0366

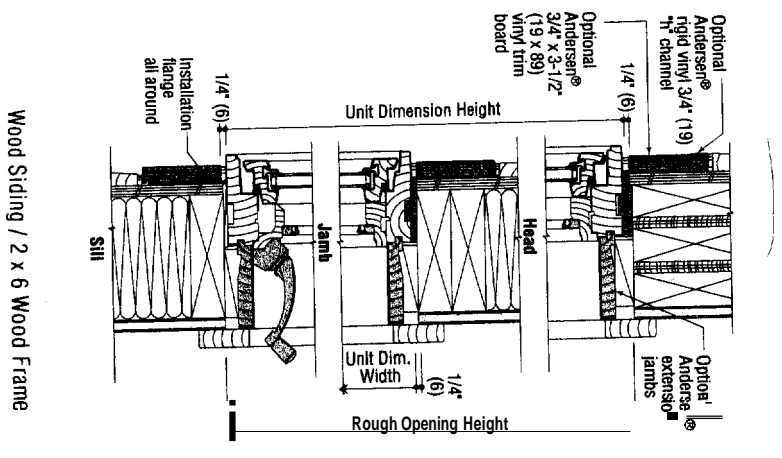
121 H	62 B	1 LIVING	DOUBLE CASEMENT	ANDERSON	400 CW 24 LR	vinyl clad wood, low E
122 H	62 B	2 BEDRM 1	DOUBLE CASEMENT	ANDERSON	400 CW 24 LR	vinyl clad wood, low E
123 H	63 B	1 DINING	DOUBLE CASEMENT	ANDERSON	400 CW 24 LR	vinyl clad wood, low E
124 H	63 B	1 LIVING	SINGLE AWNING	ANDERSON	400 AXW451	vinyl clad wood, low E
125 H	63 B	2 BEDRM 1	DOUBLE CASEMENT	ANDERSON	400 CW 24 LR	vinyl clad wood, low E
126 H	64 A	1 LIVING	SINGLE AWNING	ANDERSON	400 AXW451	vinyl clad wood, low E
127 H	64 A	1 DINING	DOUBLE CASEMENT	ANDERSON	400 CW 24 LR	vinyl clad wood, low E
128 H	64 A	2 BEDRM 1	DOUBLE CASEMENT	ANDERSON	400 AXW451	vinyl clad wood, low E
130 H	65 A	1 LIVING	DOUBLE CASEMENT	ANDERSON	400 CW 24 LR	vinyl clad wood, low E
131 H	65 A	2 BEDRM 1	DOUBLE CASEMENT	ANDERSON	400 CW 24 LR	vinyl clad wood, low E
132 H	66 A	1 LIVING	SINGLE AWNING	ANDERSON	400 AXW451	vinyl clad wood, low E
133 H	66 A	1 DINING	DOUBLE CASEMENT	ANDERSON	400 CW 24 LR	vinyl clad wood, low E
134 H	66 A	2 BEDRM 1	DOUBLE CASEMENT	ANDERSON	400 CW 24 LR	vinyl clad wood, low E
135 H	66 A					



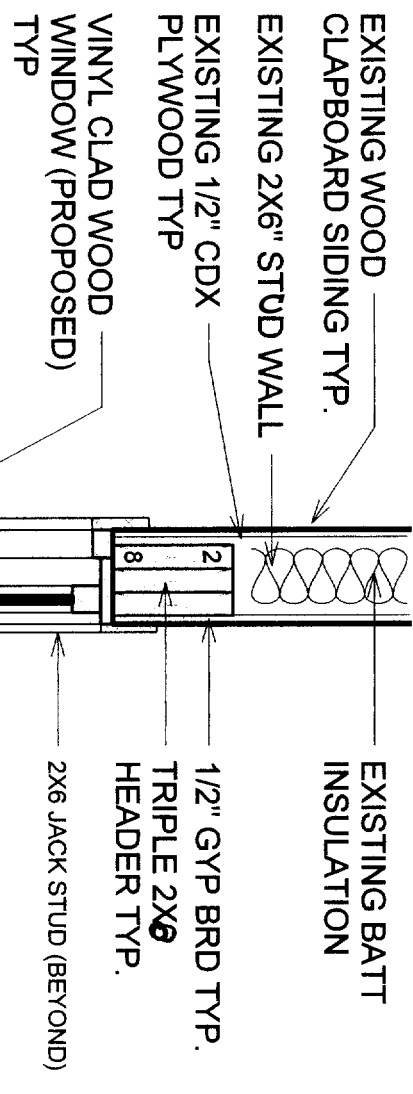
Basic Unit
Scale 3" = 1'-0" (1:4)

Horizontal Section
Basic Unit
Scale 3" = 1'-0" (1:4)

**4-9/16" measurement is from backside of anchoring flange to edge of extension jamb.



Wood Siding / 2 x 6 Wood Frame



TYP. 6" EXTERIOR WALL & WINDOW

1 Copy of Callout of Section 1
1" = 1'-0"

GEORGE A. SCHUMAN ID NUMBER 30067599
Associate Member American Institute of Architects
ARCHITECTURE - CONSTRUCTION MANAGEMENT
www.autodesk.com/revit

Shoreline Design Studio
LLC 207-799-0366

No.	Description	Date

Window Schedule & Wall Section	
Project number	20053
Date	031405
Drawn by	gas
Checked by	Checker
A - 7	
Scale 1" = 1'-0"	