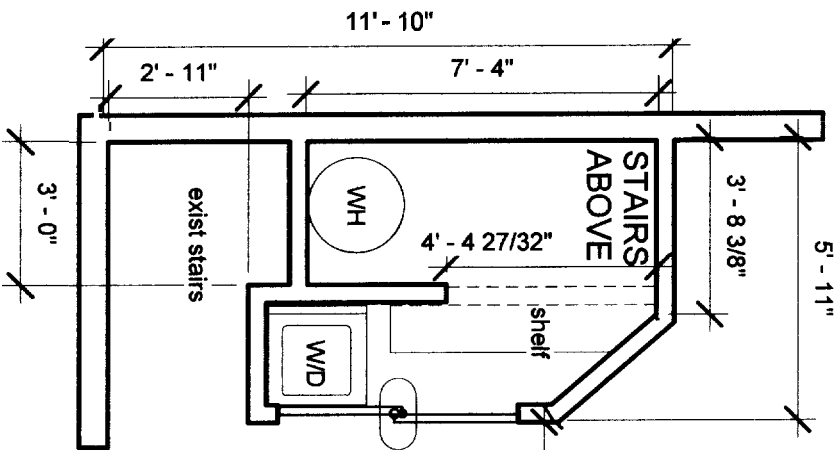
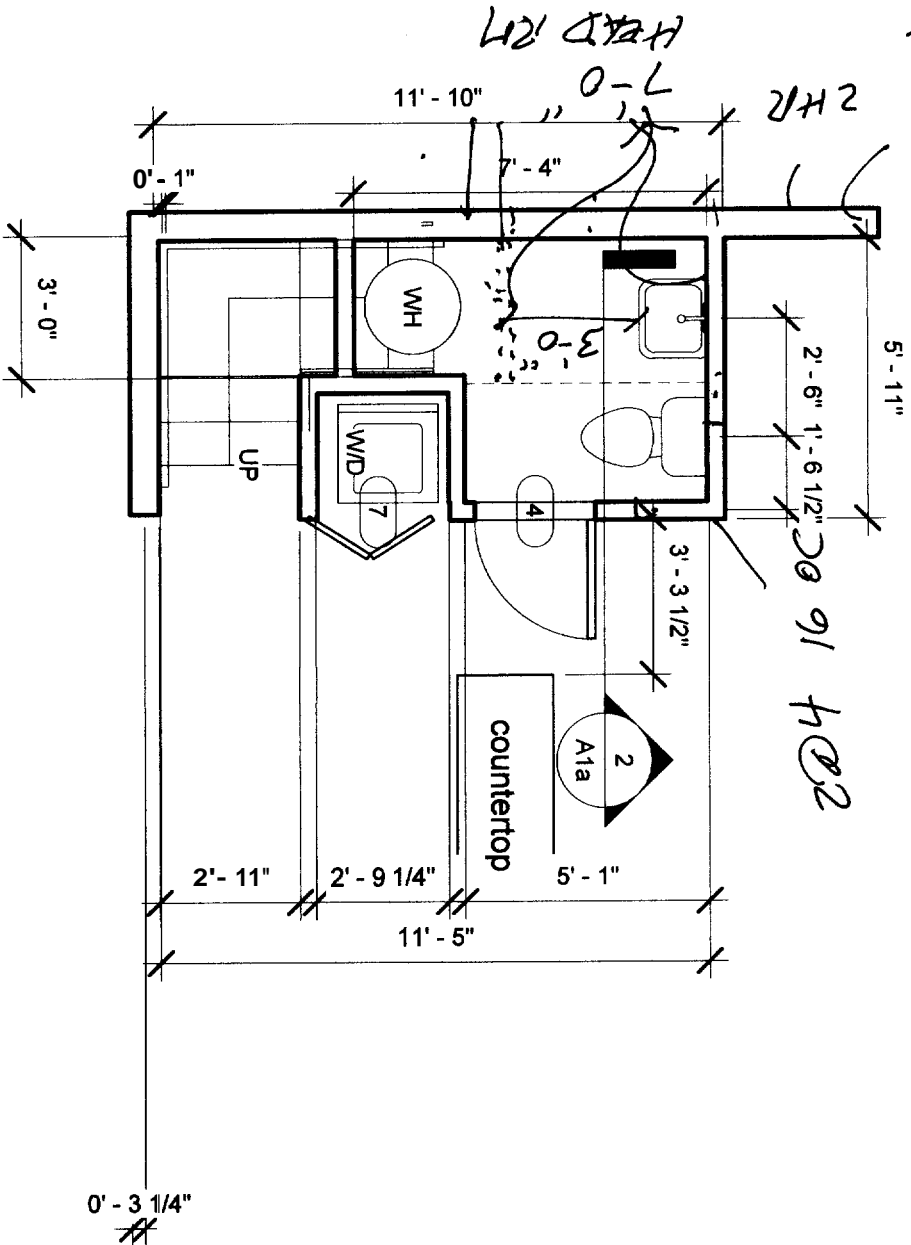


# PROPOSED 1/2 BATH

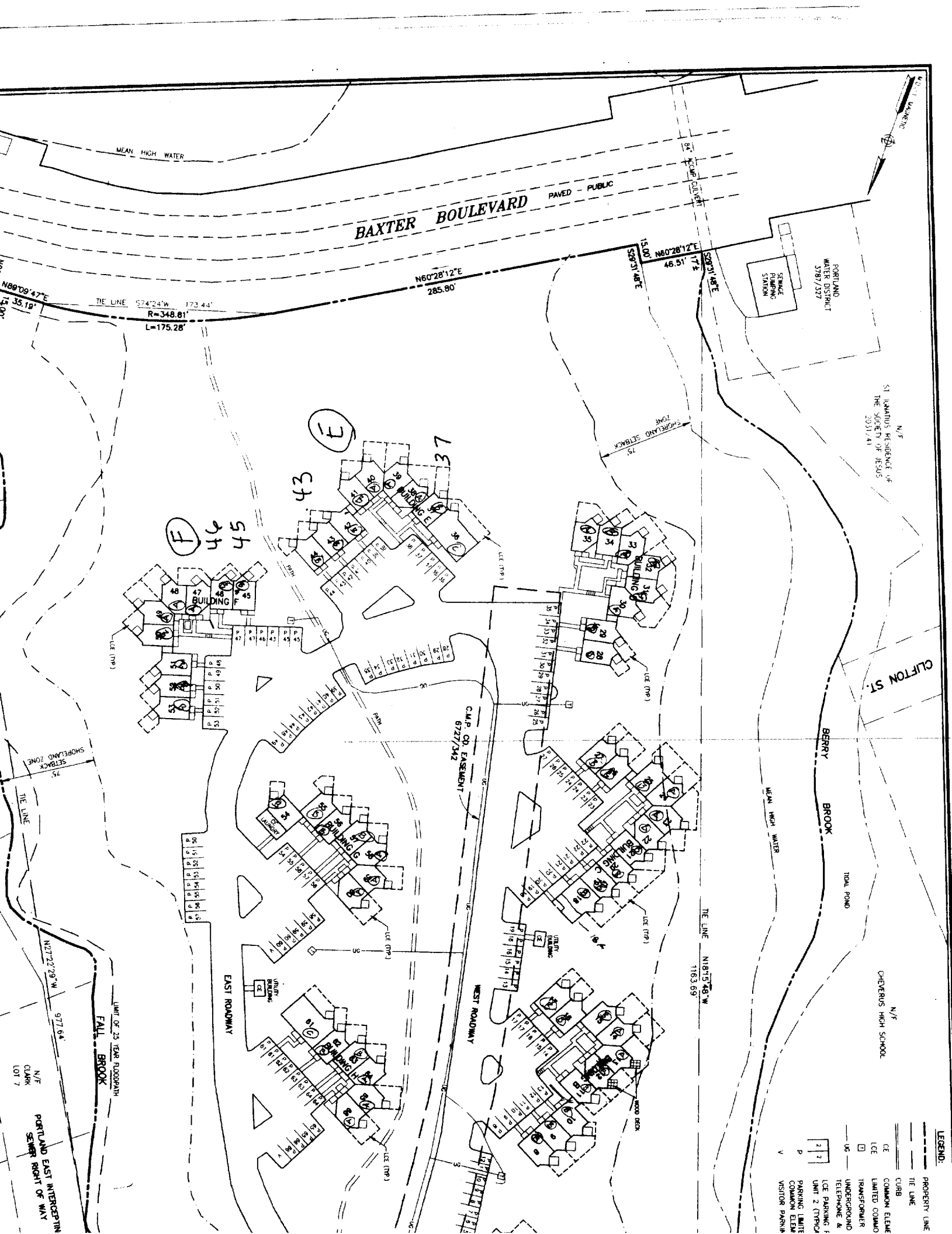
# EXISTING CONDITION



1 First Floor  
1/4" = 1'-0"

## Door Schedule

Door Number	Door Type	Door Size	Manuf	acturer	Model	Frame Type	Fire			Description	Finish		Comments
							Rating	Head	Jamb		Sill	Door	
4	38	30" x 80"	Masoni			WOOD				NEW	PAINTED	PAINTED	6 PANEL



**BAXTER BOULEVARD**  
PAVED - PUBLIC

PORTLAND  
WATER DISTRICT  
3787/327

ST. LEONARD'S RESIDENCE OF  
THE SOCIETY OF JESUS  
2031/41

CLIFTON ST.

BERRY  
BROOK

CHEVERUS HIGH SCHOOL

**LEGEND:**

- PROPERTY LINE
- TIE LINE
- CURB
- COMMON ELEMENT
- LIMITED COMMON
- TRANSFORMER
- UNDERGROUND TELEPHONE & ICE PARKING
- UNIT 2 (TYPICAL)
- PARKING LIMIT COMMON ELEMENT
- VISITOR PARKING

MEAN HIGH WATER

N60°28'12"E  
285.80'

N80°28'12"E  
177.2'

TIE LINE S74°24'W 173.44'  
R=348.81'  
L=175.28'

SEAPLANE ZONE  
SETBACK  
75'

CAMP DR. EASEMENT  
6727/342

TIE LINE  
N18°15'48"W  
1163.69'

LIMIT OF 25 YEAR FLOODPLAIN  
FALL BROOK

N/E  
CLARK  
LOT 7  
PORTLAND EAST INTERCEPTOR  
SEWER RIGHT OF WAY