

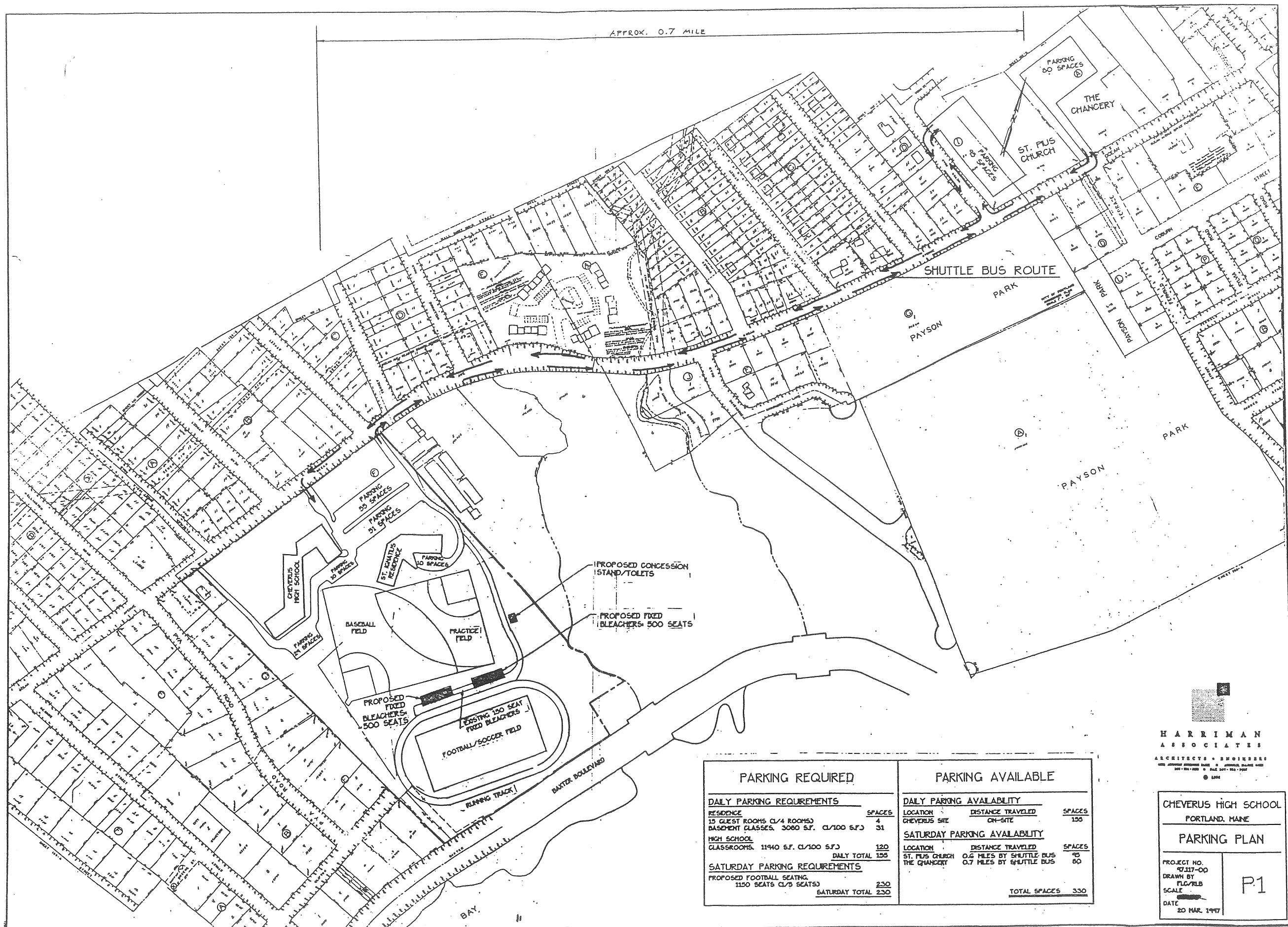
156-F-2

2008-0049

267 Ocean Ave.

Athletic Field Improv.

Cheverus High School



APPROX. 0.7 MILE

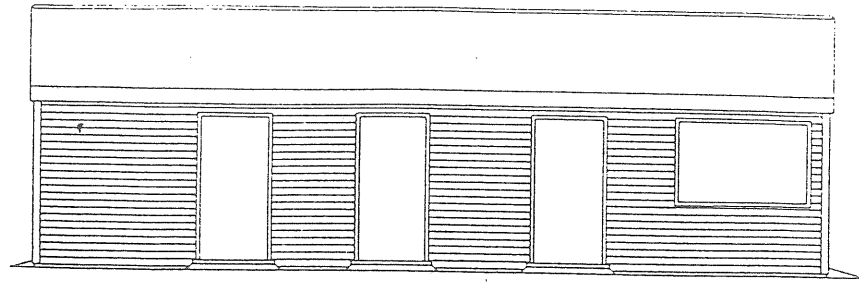
PARKING REQUIRED		PARKING AVAILABLE		
DAILY PARKING REQUIREMENTS		DAILY PARKING AVAILABILITY		
RESIDENCE	SPACES	LOCATION	SPACES	
15 GUEST ROOMS (1/4 ROOMS)	4	CHEVERUS SITE	155	
BASINENT CLASSES, 3080 S.F. (1/100 S.F.)	31	SATURDAY PARKING AVAILABILITY		
HIGH SCHOOL CLASSROOMS, 11940 S.F. (1/100 S.F.)	120	LOCATION	DISTANCE TRAVELED	SPACES
DAILY TOTAL	155	ST. PLUS CHURCH	0.6 MILES BY SHUTTLE BUS	90
SATURDAY PARKING REQUIREMENTS		THE CHANCERY	0.7 MILES BY SHUTTLE BUS	60
PROPOSED FOOTBALL SEATING, 1150 SEATS (1/3 SEATS)	230			
SATURDAY TOTAL	230			TOTAL SPACES 330

HARRIMAN ASSOCIATES
 ARCHITECTS • ENGINEERS
 1000 WASHINGTON AVENUE SUITE 100 PORTLAND, MAINE 04101
 1997 © 1994

CHEVERUS HIGH SCHOOL
 PORTLAND, MAINE
PARKING PLAN

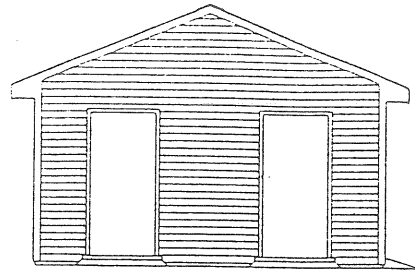
PROJECT NO. 97-117-00
 DRAWN BY TFL/RLB
 SCALE
 DATE 20 MAR. 1997

P1



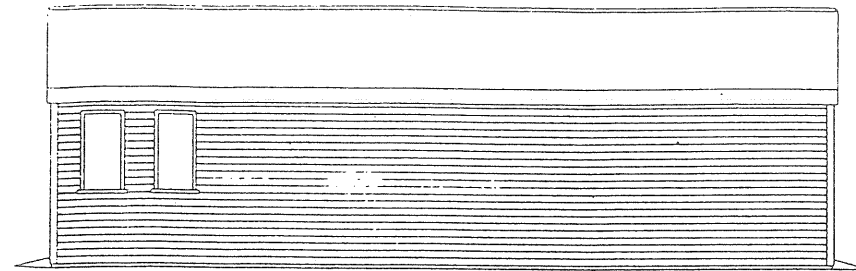
FRONT ELEVATION

SCALE 1:48



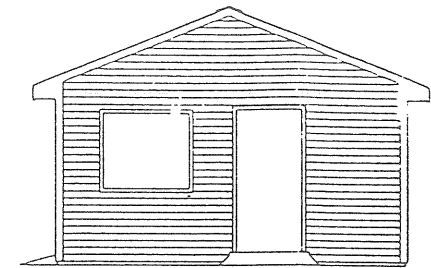
LEFT ELEVATION

SCALE 1:48



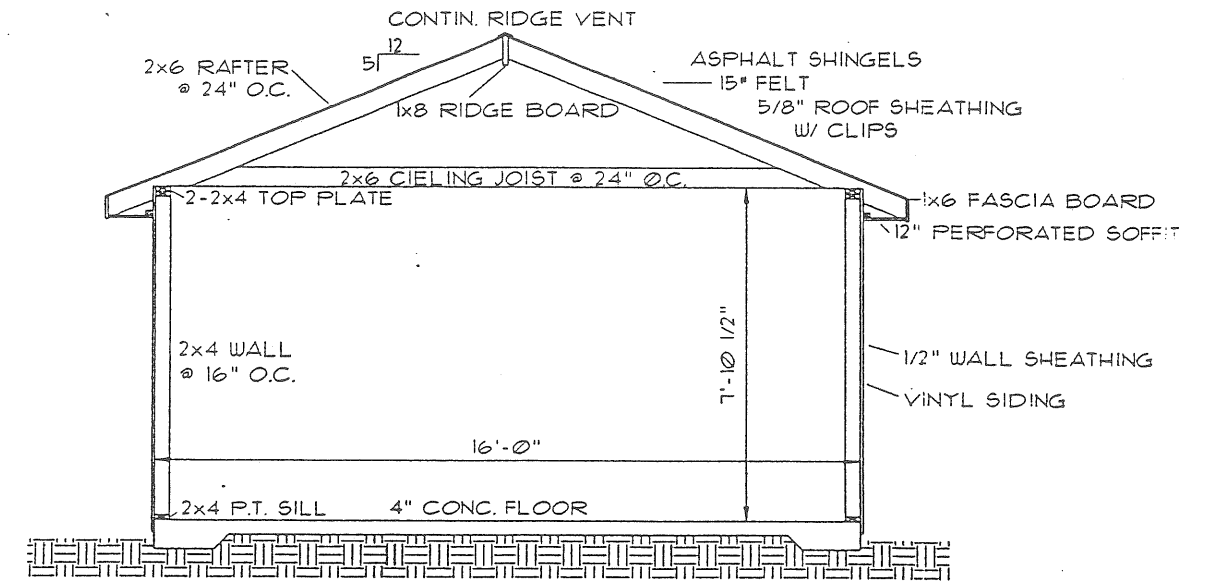
REAR ELEVATION

SCALE 1:48



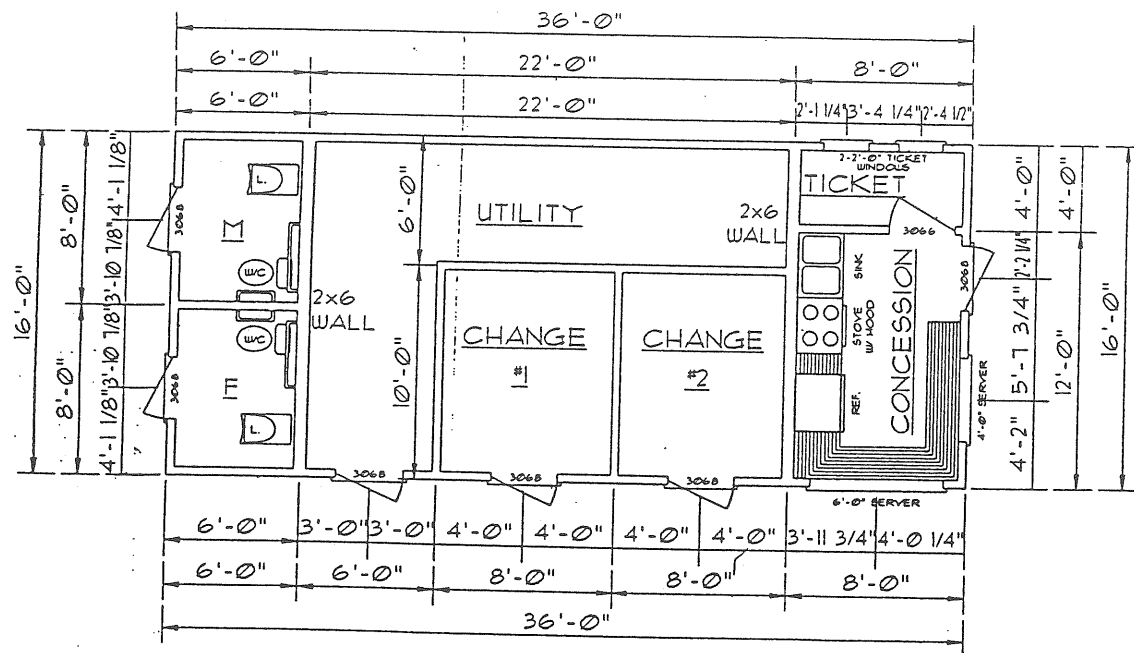
RIGHT ELEVATION

SCALE 1:48



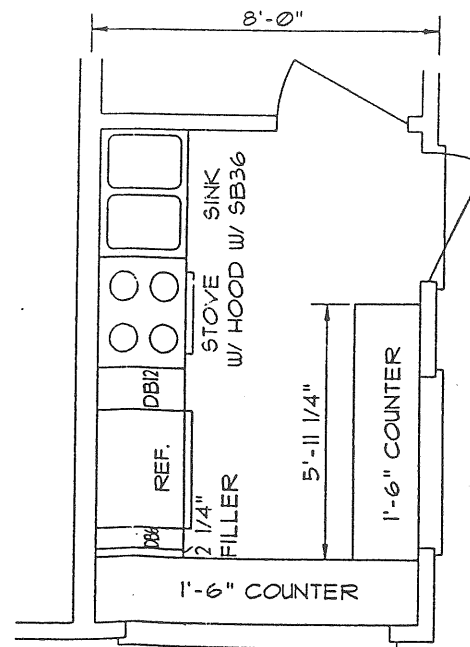
CROSS SECTION

SCALE 1:24



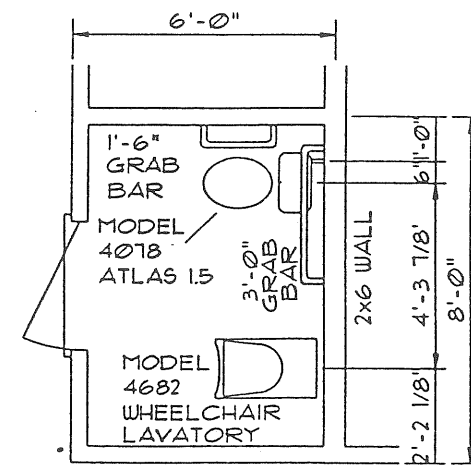
FLOOR PLAN

SCALE 1:48



KITCHEN DETAIL

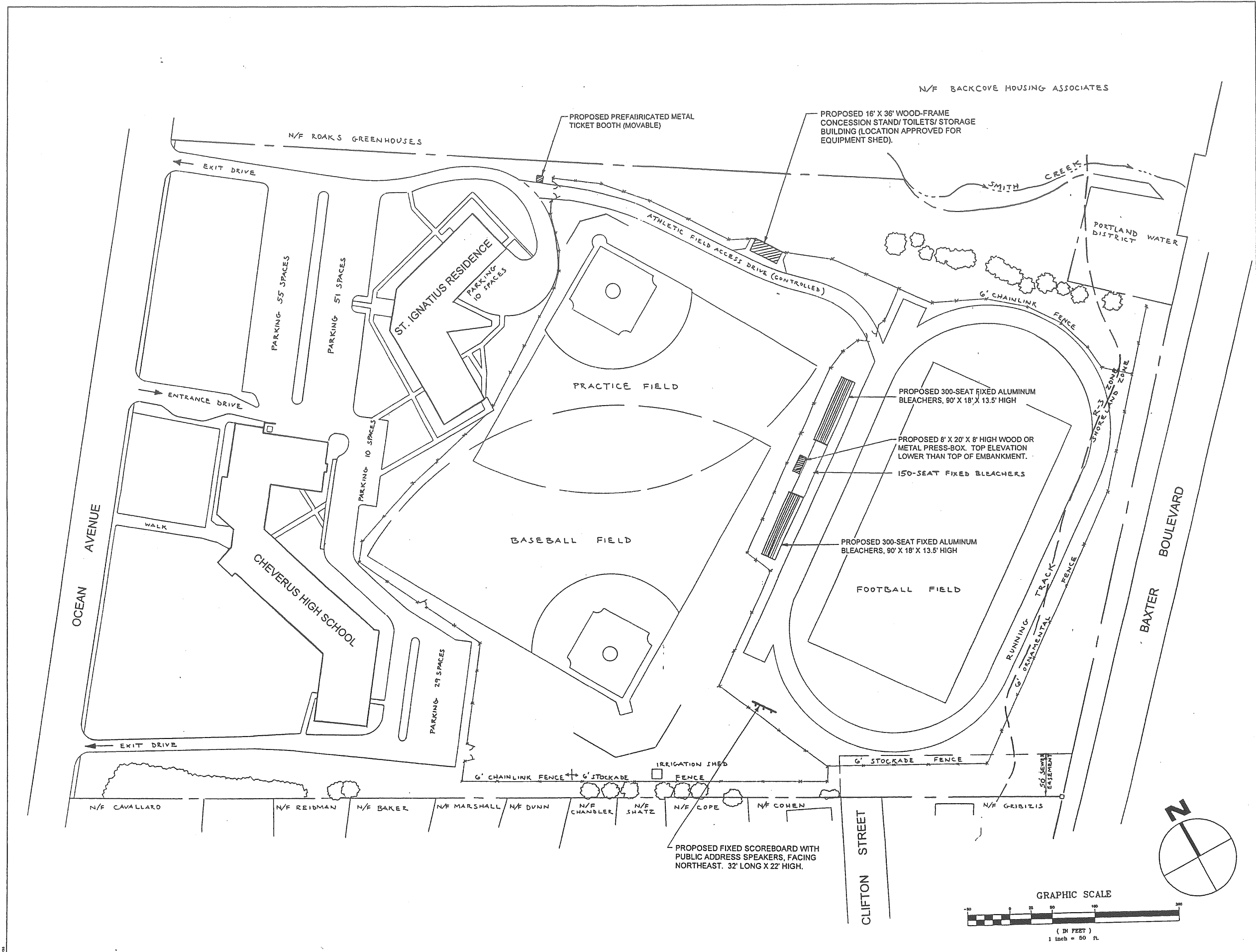
SCALE 1:24



BATHROOM DETAIL

SCALE 1:24

DRAWN BY
FREDERICK L. STUART III



- NOTES**
- EXISTING SITE FEATURES WERE TRACED FROM DRAWING L-1 FROM STEVENS, MORTON, ROSE, AND THOMPSON, REVISED DATED 1-18-89, AS SUBMITTED TO THE CITY OF PORTLAND. PROPERTY BOUNDARIES SHOWN ARE BASED ON TAX ASSESSMENT MAPPING.
 - SITE AREA = 20.2 ACRES
 - PAVED PARKING SPACES ON-SITE = 155 (INCLUDING 7 BENEATH RESIDENCE).
 - SHORELAND ZONE LINE IS DRAWN 250 FT. FROM BACK COVE HIGH WATER LINE.

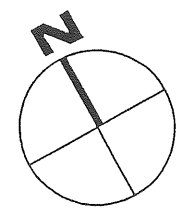
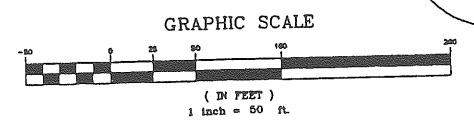
HARRIMAN ASSOCIATES
 ARCHITECTS • ENGINEERS
 ONE AUBURN BUSINESS PARK • AUBURN, MAINE 04210
 207 • 784 • 5100 • FAX 207 • 782 • 5017

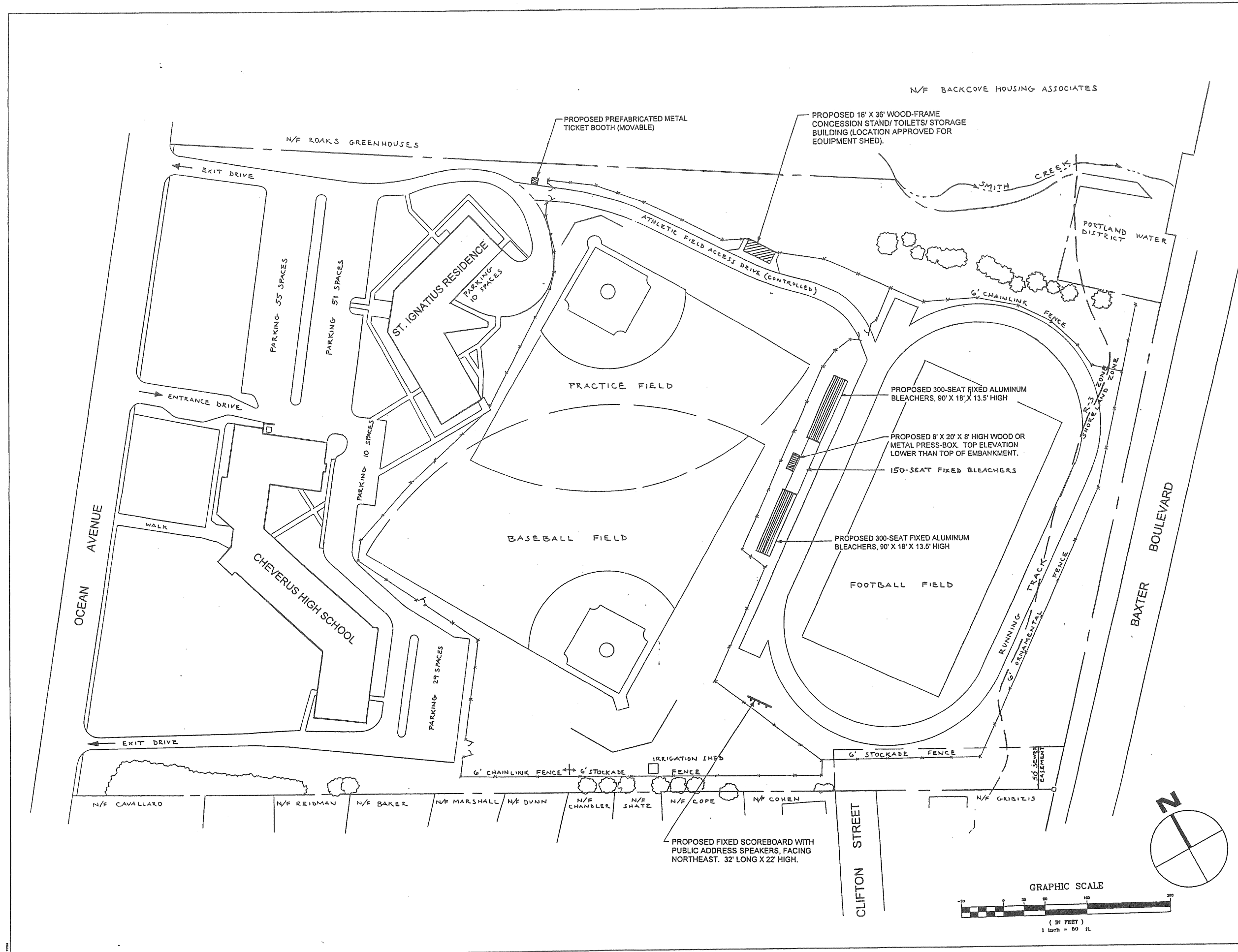
REV.	DATE	REVISION DESCRIPTION
1	4-14-97	REVISED BLEACHERS

PROJECT TITLE
CHEVERUS HIGH SCHOOL
 PORTLAND, MAINE

DRAWING TITLE
SITE IMPROVEMENTS TO CHANGE "CONDITIONS OF APPROVAL"

PROJECT NO. 97.117-00 DRAWING NO. SD-1
 DESIGNED BY FLC
 DRAWN BY FLC
 CHECKED BY FLC
 SCALE 1"=50'
 DATE 3/31/97





NOTES

1. EXISTING SITE FEATURES WERE TRACED FROM DRAWING L-1 FROM STEVENS, MORTON, ROSE, AND THOMPSON, REVISED DATED 1-18-89, AS SUBMITTED TO THE CITY OF PORTLAND. PROPERTY BOUNDARIES SHOWN ARE BASED ON TAX ASSESSMENT MAPPING.
2. SITE AREA = 20.2 ACRES
3. PAVED PARKING SPACES ON-SITE = 155 (INCLUDING 7 BENEATH RESIDENCE).
4. SHORELAND ZONE LINE IS DRAWN 250 FT. FROM BACK COVE HIGH WATER LINE.

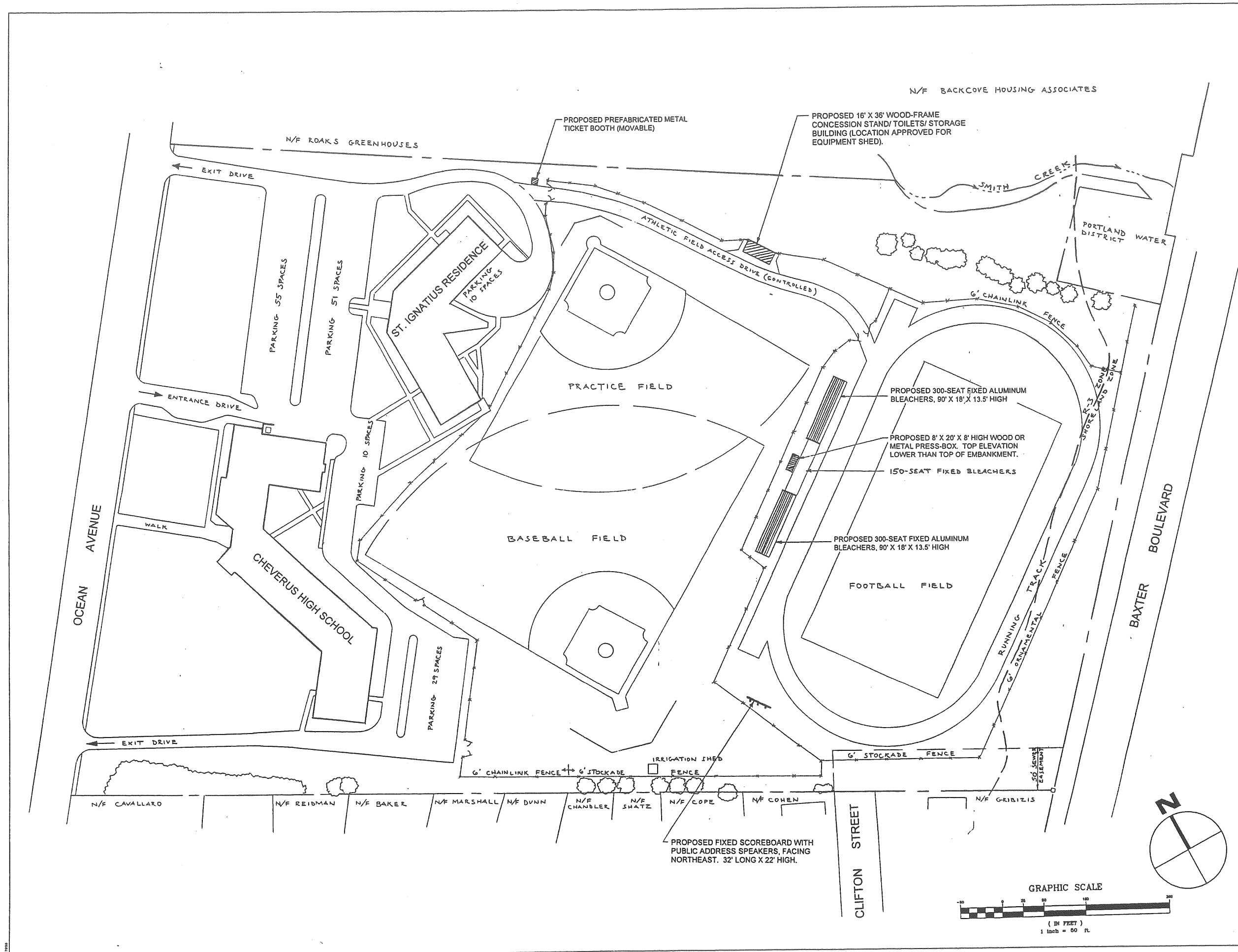
HARRIMAN ASSOCIATES
 ARCHITECTS • ENGINEERS
 ONE ALBURN BUSINESS PARK • ALBURN, MAINE 04210
 207 • 784 • 5100 • FAX 207 • 782 • 3017

NO.	DATE	REVISION DESCRIPTION
1	4-14-97	REVISED BLEACHERS


PROJECT TITLE
CHEVERUS HIGH SCHOOL
 PORTLAND, MAINE

DRAWING TITLE
SITE IMPROVEMENTS TO CHANGE "CONDITIONS OF APPROVAL"

PROJECT NO. 97.117-00 DRAWING NO. SD-1
 DESIGNED BY FLC
 DRAWN BY FLC
 CHECKED BY FLC
 SCALE 1"=50'
 DATE 3/31/97



- NOTES**
1. EXISTING SITE FEATURES WERE TRACED FROM DRAWING L-1 FROM STEVENS, MORTON, ROSE, AND THOMPSON, REVISED DATED 1-18-89, AS SUBMITTED TO THE CITY OF PORTLAND. PROPERTY BOUNDARIES SHOWN ARE BASED ON TAX ASSESSMENT MAPPING.
 2. SITE AREA = 20.2 ACRES
 3. PAVED PARKING SPACES ON-SITE = 155 (INCLUDING 7 BENEATH RESIDENCE).
 4. SHORELAND ZONE LINE IS DRAWN 250 FT. FROM BACK COVE HIGH WATER LINE.


HARRIMAN ASSOCIATES
 ARCHITECTS • ENGINEERS
 ONE AUBURN BUSINESS PARK • AUBURN, MAINE 04210
 207 • 784 • 5100 • FAX 207 • 782 • 3017

NO.	DATE	REVISION DESCRIPTION
1	4-14-97	REVISED BLEACHERS

PROJECT TITLE

CHEVERUS HIGH SCHOOL

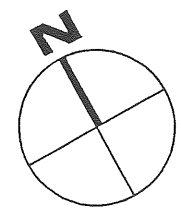
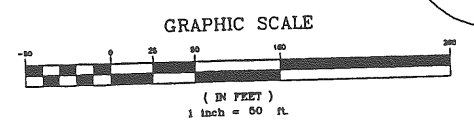
PORTLAND, MAINE

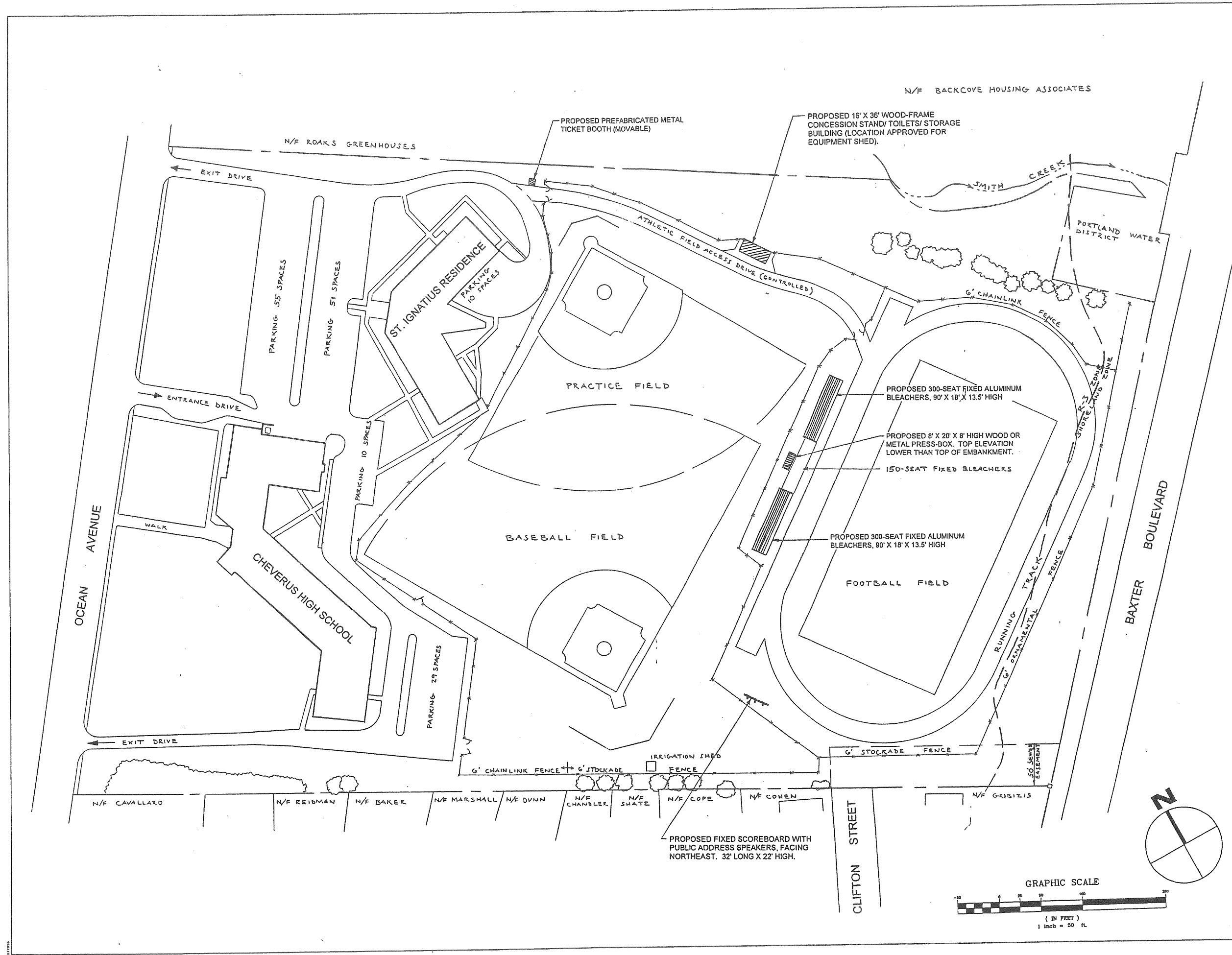
DRAWING TITLE

SITE IMPROVEMENTS TO CHANGE "CONDITIONS OF APPROVAL"

PROJECT NO. 97.117-00 DRAWING NO. **SD-1**

DESIGNED BY FLC
 DRAWN BY FLC
 CHECKED BY FLC
 SCALE 1"=50'
 DATE 3/31/97





- NOTES**
- EXISTING SITE FEATURES WERE TRACED FROM DRAWING L-1 FROM STEVENS, MORTON, ROSE, AND THOMPSON, REVISED DATED 1-18-89, AS SUBMITTED TO THE CITY OF PORTLAND. PROPERTY BOUNDARIES SHOWN ARE BASED ON TAX ASSESSMENT MAPPING.
 - SITE AREA = 20.2 ACRES
 - PAVED PARKING SPACES ON-SITE = 155 (INCLUDING 7 BENEATH RESIDENCE).
 - SHORELAND ZONE LINE IS DRAWN 250 FT. FROM BACK COVE HIGH WATER LINE.

HARRIMAN ASSOCIATES
 ARCHITECTS • ENGINEERS
 ONE ALBURN BUSINESS PARK • ALBURN, MAINE 04210
 207 • 784 • 5100 • FAX 207 • 782 • 3017

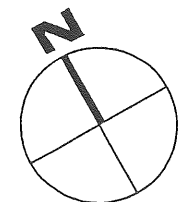
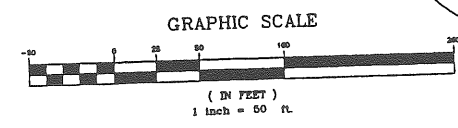
NO.	DATE	REVISION DESCRIPTION
1	9-14-97	REMOVED BLEACHERS

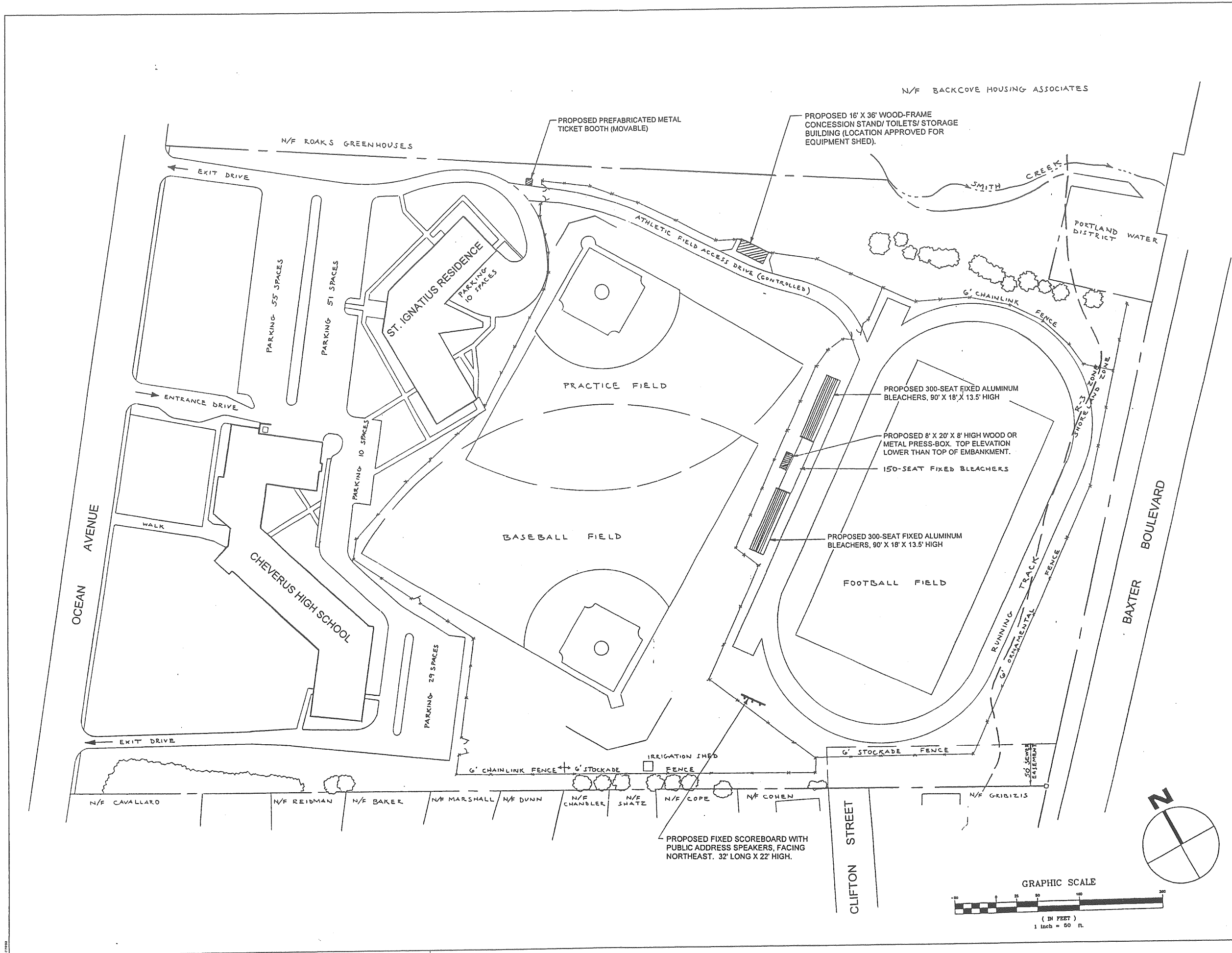
PROJECT TITLE
CHEVERUS HIGH SCHOOL
 PORTLAND, MAINE

DRAWING TITLE
SITE IMPROVEMENTS TO CHANGE "CONDITIONS OF APPROVAL"

PROJECT NO. 97.117-00 DRAWING NO. **SD-1**

DESIGNED BY FLC
 DRAWN BY FLC
 CHECKED BY FLC
 SCALE 1"=50'
 DATE 3/31/97





- NOTES**
- EXISTING SITE FEATURES WERE TRACED FROM DRAWING L-1 FROM STEVENS, MORTON, ROSE, AND THOMPSON, REVISED DATED 1-18-89, AS SUBMITTED TO THE CITY OF PORTLAND. PROPERTY BOUNDARIES SHOWN ARE BASED ON TAX ASSESSMENT MAPPING.
 - SITE AREA = 20.2 ACRES
 - PAVED PARKING SPACES ON-SITE = 155 (INCLUDING 7 BENEATH RESIDENCE).
 - SHORELAND ZONE LINE IS DRAWN 250 FT. FROM BACK COVE HIGH WATER LINE.

HARRIMAN ASSOCIATES
 ARCHITECTS • ENGINEERS
 ONE AUBURN BUSINESS PARK • AUBURN, MAINE 04210
 207 • 784 • 5100 • FAX 207 • 782 • 5017

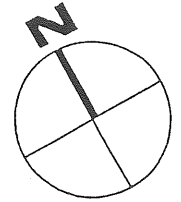
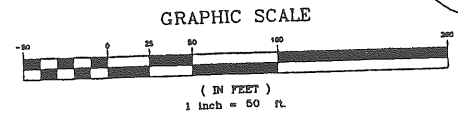
4-14-97	REVISED BLEACHERS
DATE	REVISION DESCRIPTION

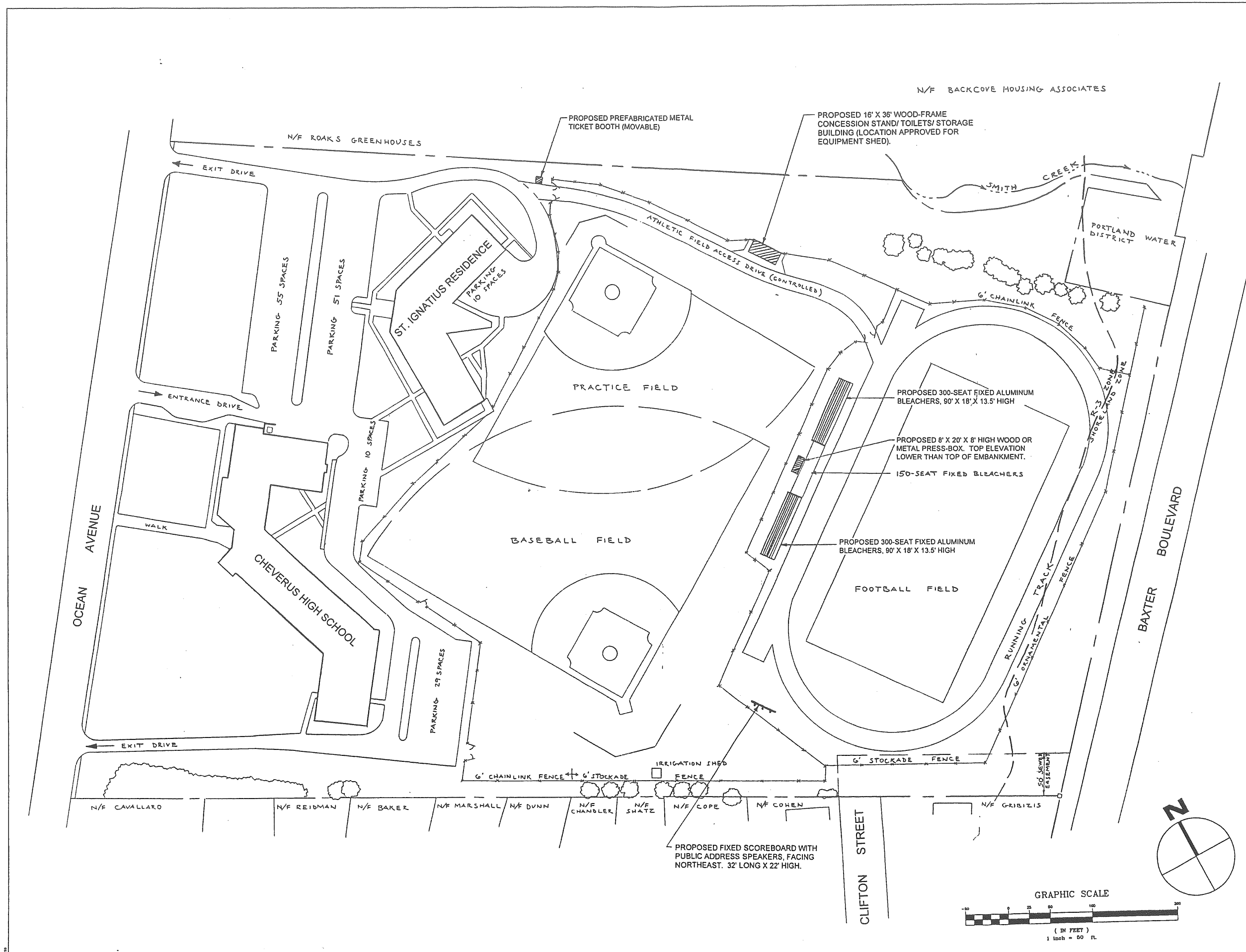
PROJECT TITLE
CHEVERUS HIGH SCHOOL
 PORTLAND, MAINE

DRAWING TITLE
SITE IMPROVEMENTS TO CHANGE "CONDITIONS OF APPROVAL"

PROJECT NO. 97.117-00 DRAWING NO.
 DESIGNED BY FLC
 DRAWN BY FLC
 CHECKED BY FLC
 SCALE 1"=50'
 DATE 3/31/97

SD-1





- NOTES**
- EXISTING SITE FEATURES WERE TRACED FROM DRAWING L-1 FROM STEVENS, MORTON, ROSE, AND THOMPSON, REVISED DATED 1-18-89, AS SUBMITTED TO THE CITY OF PORTLAND. PROPERTY BOUNDARIES SHOWN ARE BASED ON TAX ASSESSMENT MAPPING.
 - SITE AREA = 20.2 ACRES
 - PAVED PARKING SPACES ON-SITE = 155 (INCLUDING 7 BENEATH RESIDENCE).
 - SHORELAND ZONE LINE IS DRAWN 250 FT. FROM BACK COVE HIGH WATER LINE.

HARRIMAN ASSOCIATES
 ARCHITECTS • ENGINEERS
 ONE AUBURN BUSINESS PARK • AUBURN, MAINE 04210
 207 • 784 • 5101 • FAX 207 • 782 • 3017

NO.	DATE	REVISION DESCRIPTION
1	4-14-97	REMOVED BLEACHERS

PROJECT TITLE

CHEVERUS HIGH SCHOOL

PORTLAND, MAINE

DRAWING TITLE

SITE IMPROVEMENTS TO CHANGE "CONDITIONS OF APPROVAL"

PROJECT NO. 97.117-00 DRAWING NO. **SD-1**

DESIGNED BY FLC

DRAWN BY FLC

CHECKED BY FLC

SCALE 1" = 50'

DATE 3/31/97

