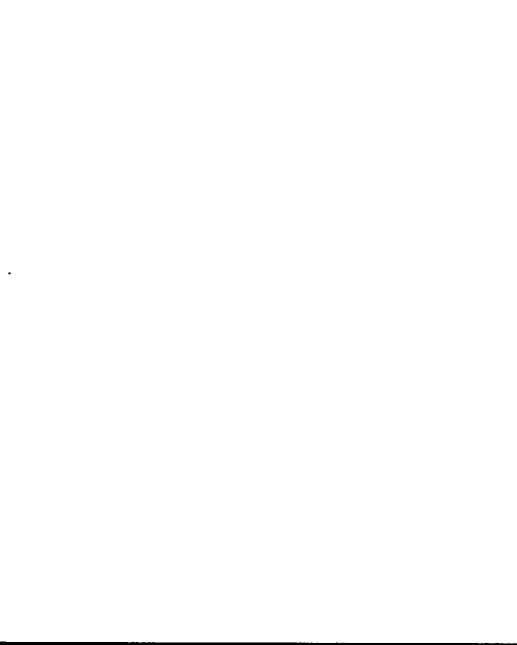


GENERAL NOTES

1. ALL WORK SHALL BE IN ACCORDANCE WITH THE LATEST EDITIONS OF THE NATIONAL ELECTRICAL CODE (NEC) AND THE NATIONAL FIRE ALARM AND SIGNAL CODE (NFPA 72).
2. RUN ANY SURFACE WIRING AS NECESSARILY AS POSSIBLE IN WALL AND CEILING SPACES WHERE POSSIBLE.
3. DEVICES WITH AN "X" ARE EXISTING, "R" REPLACE EXISTING, AND "N" NEW. ALL DEVICES SHALL BE INSTALLED IN ACCORDANCE WITH THE LATEST EDITIONS OF THE NATIONAL ELECTRICAL CODE (NEC).
4. INDICATE NEW UNLESS OTHERWISE INDICATED.
5. DEVICES TO BE INSTALLED SHALL BE INDICATED BY CIRCLES WITH DIMENSIONS AND TYPE INDICATED.
6. DEVICES WITH DIMENSIONS "X" --- INDICATE REMOVE UNLESS OTHERWISE INDICATED.
7. INDICATE ANY NEW WIRING FOR CONDUITING ACTION.

NOTED NOTES

1. SEE DRAWING 10/27/04 FOR CONTINUATION HEAVY WIRING TO NEXT LIGHTING FIXTURE. SEE DRAWING 10/27/04 FOR CONTINUATION.
2. SEE DRAWING 10/27/04 FOR CONTINUATION HEAVY WIRING TO NEXT LIGHTING FIXTURE. SEE DRAWING 10/27/04 FOR CONTINUATION.
3. WIRE UP TO NEXT LIGHTING FIXTURE. SEE DRAWING 10/27/04 FOR CONTINUATION.
4. WIRE UP TO NEXT LOW VOLTAGE SWITCH. SEE DRAWING 10/27/04 FOR CONTINUATION.
5. WIRE UP TO NEXT LIGHTING FIXTURE. SEE DRAWING 10/27/04 FOR CONTINUATION.
6. WIRE TO EXISTING CORRIDOR CIRCUIT.
7. FIELD ADJUST HEIGHT AND LOCATION OF NEW INDUSTRIAL FIXTURES TO BEST ADVANTAGE.



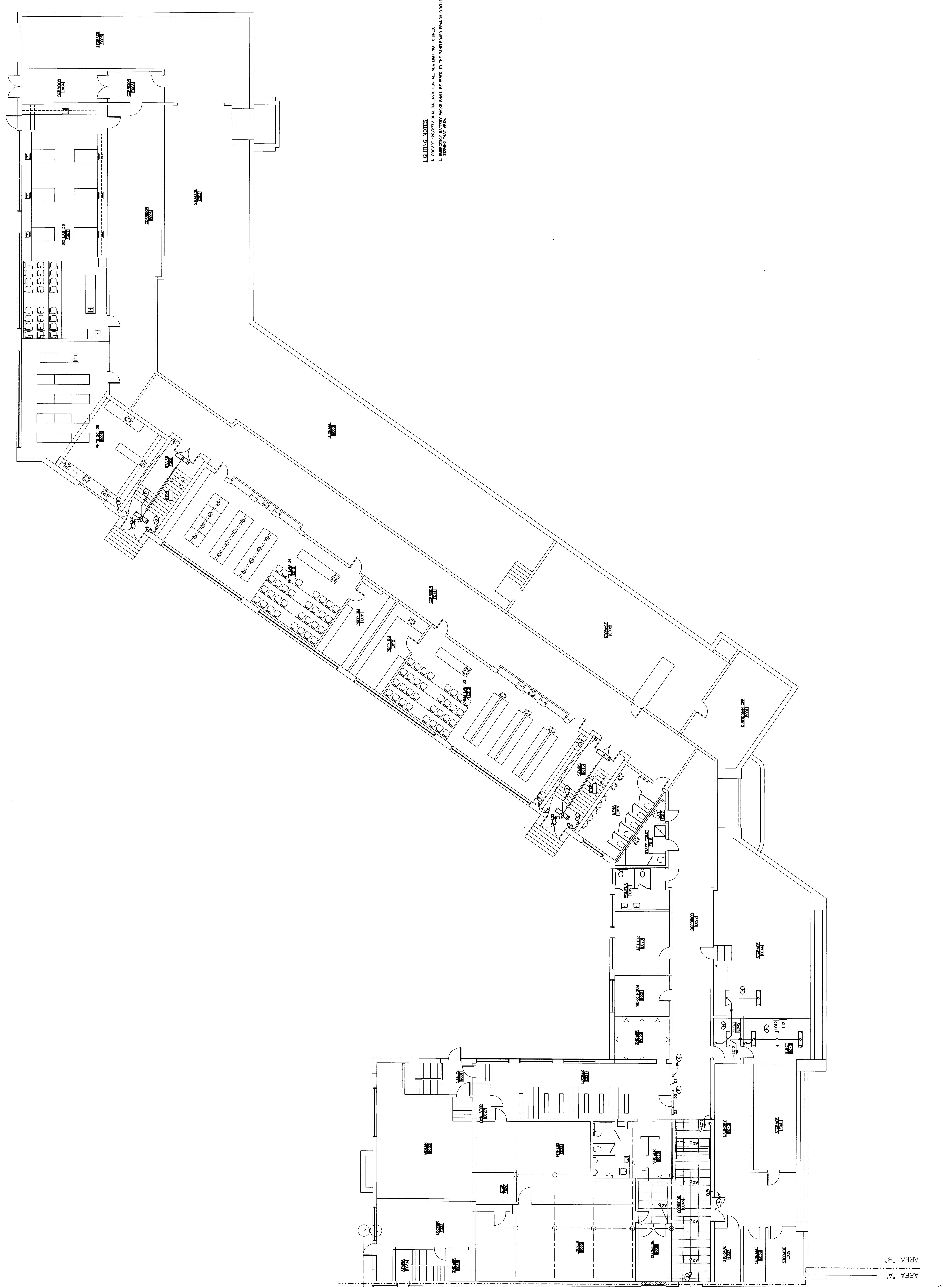
Ames Hewlett Gifford
 CONSULTING ENGINEERS & ARCHITECTS
 181 MAIN STREET WINTHROP, MAINE
 Tel: 207.577-1889 Fax: 207.577-7584
 ME Proj. No. 04028

Mark	Date	Description
—	05-28-04	ISSUED FOR BID
—	05-17-04	OWNER REVIEW
Issue Dates		

Drawing Status

Drawing Title
**GROUND FLOOR PLAN
 LIGHTING
 AREA B**

Pr. / Rev. CCH
 Drawing Number
E10.1B
 Date: 05-28-04



LIGHTING NOTES

1. PROVIDE 100/270V DUAL BALLASTS FOR ALL NEW LIGHTING FIXTURES.
2. SERVICED BY AREA