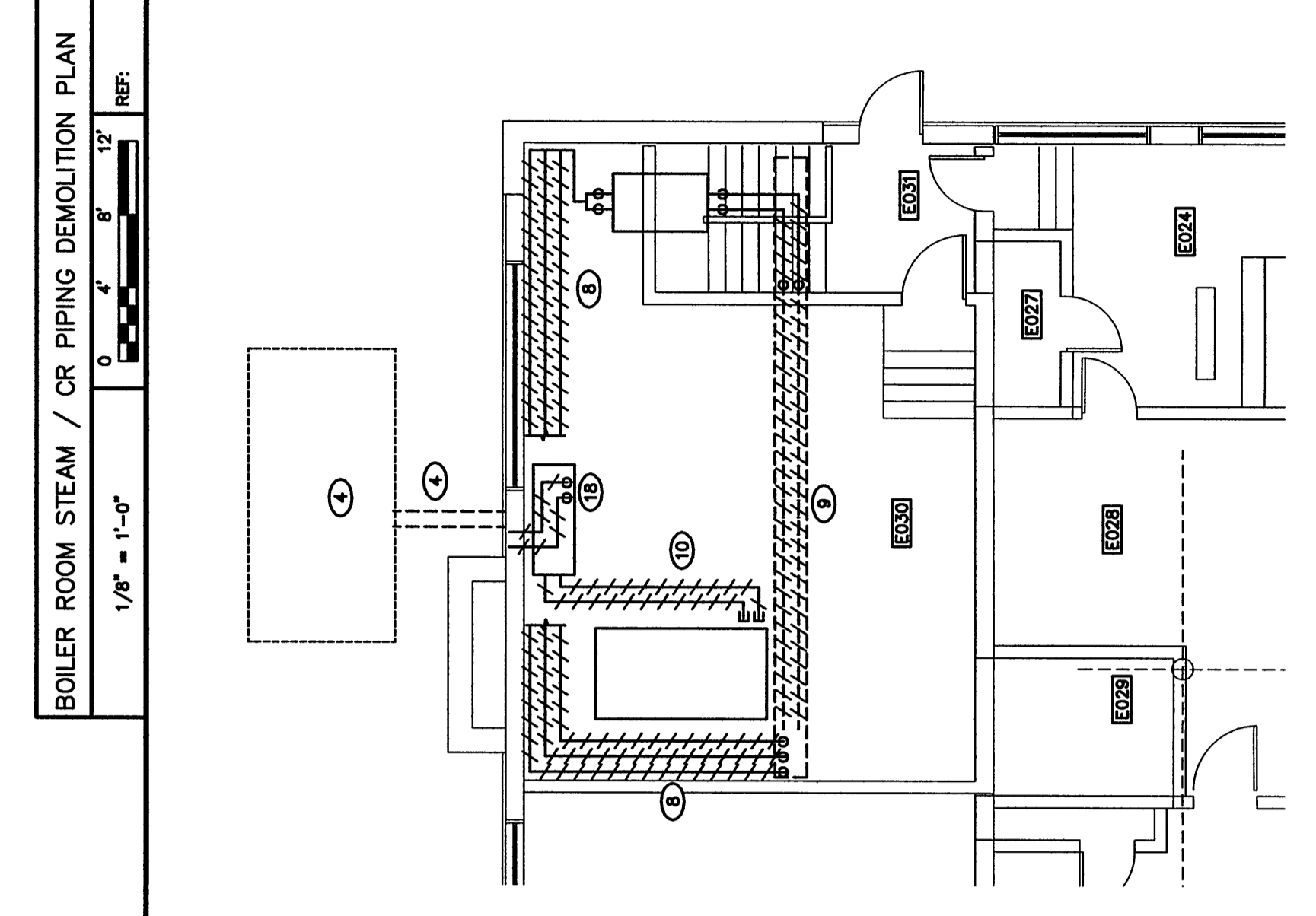
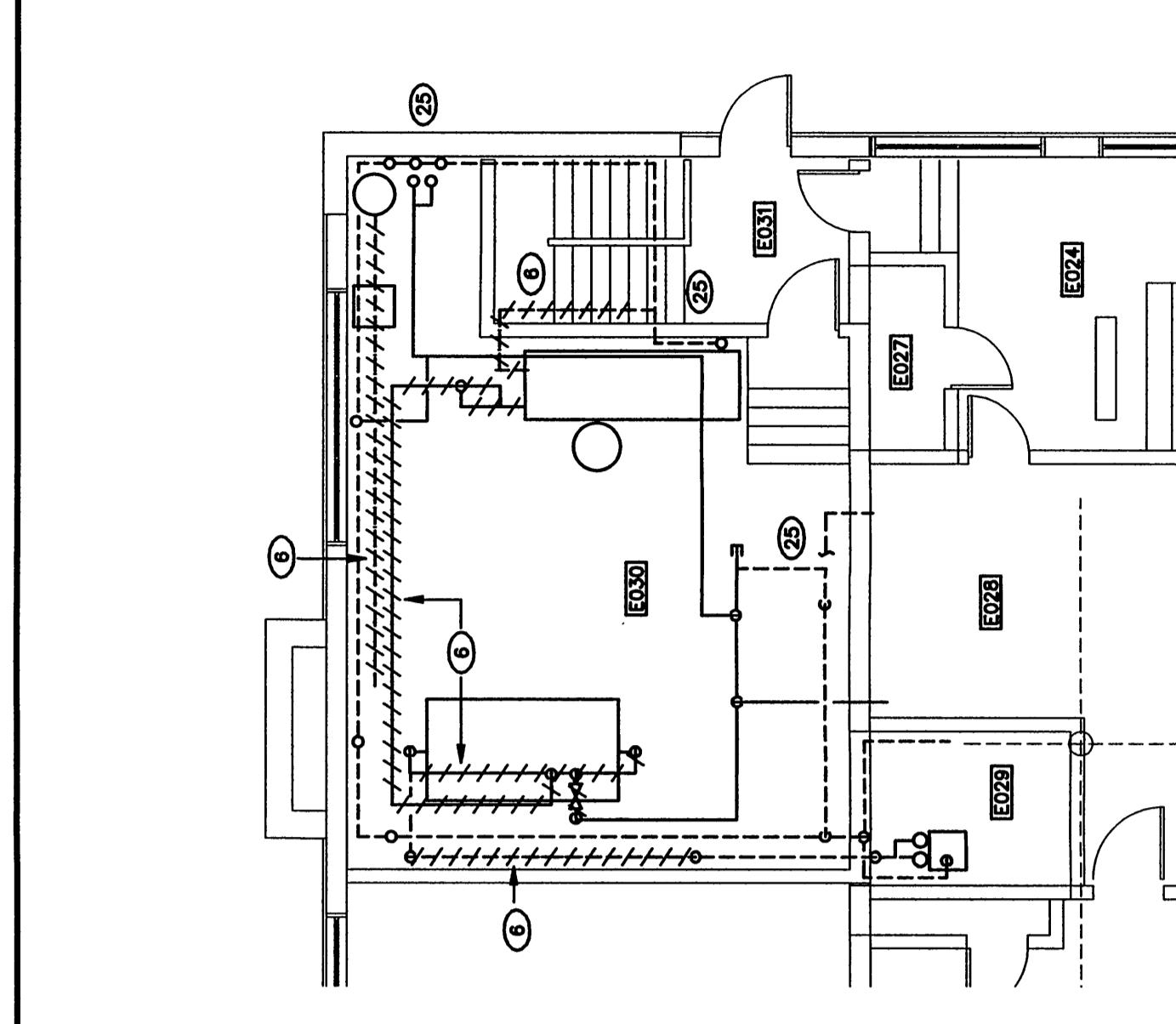


Mark	Date	Description
05-28-04	ISSUED FOR BID	
05-17-04	OWNER REVIEW	

Drawing Status  
 \_\_\_\_\_  
 \_\_\_\_\_  
 \_\_\_\_\_

- MECHANICAL DEMOLITION NOTES**
1. IN GENERAL, THIS EQUIPMENT AND PIPING IS TO REMAIN UNLESS NOTED OTHERWISE.
- MECHANICAL DEMOLITION-SCHEDULED NOTES**
1. STEAM BOILER AND ASSOCIATED TO BE REMOVED.
  2. CONDENSATE PIPING TO BE RELOCATED.
  3. THERMAL OIL COMPRESSOR TO BE REPLACED AND RELOCATED TO NEW BOILER ROOM. EXTEND PNEUMATIC LINES TO NEW LOCATION.
  4. UNDERGROUND FUEL OIL TANK AND PIPING TO BE REMOVED BY GENERAL CONTRACTOR.
  5. 300 GALLON FUEL OIL TANK TO BE REMOVED.
  6. STEAM OR CONDENSATE PIPING TO BE REMOVED AS INDICATED.
  7. FUEL OIL PUMP SET TO BE REMOVED.
  8. FUEL OIL PIPING MOUNTED ABOVE FLOOR TO BE REMOVED AS INDICATED.
  9. FUEL OIL PIPING MOUNTED BELOW FLOOR TO BE REMOVED AS INDICATED.
  10. FUEL OIL PIPING AT FLOOR TO BE REMOVED AS INDICATED.
  11. AIR-HEATED CONDENSATE TANK TO BE REMOVED.
  12. GAS DRY HEATER AND ASSOCIATED TO BE REMOVED.
  13. DHW STORAGE TANK TO BE REMOVED.
  14. PNEUMATIC CONTROL PANEL TO BE RELOCATED TO THE NEW BOILER ROOM. EXTEND LINES AS NECESSARY.
  15. 3/8x24 COMBUSTION AIR LOUVERS TO BE BLOCKED OFF WITH SHEET METAL AND 2" RIGID INSULATION.
  16. AIR DRYER TO BE RELOCATED TO NEW BOILER ROOM.
  17. FUEL OIL FILL AND VENT TO BE REMOVED AS INDICATED.
  18. STEAM FTR OR CONNECTOR AND CONTROLS TO BE REMOVED. CAP LINES BELOW FLOOR AND PROVIDE END OF MAIN RELIEF HOOD AND DUCTWORK TO BE REMOVED. THE NEW UNIT INTO EXISTING S AND OR LINES.
  19. STEAM FTR OR CONNECTOR TO REMAIN.
  20. EXHAUST FAN AND ASSOCIATED GRILLES, CONTROLS AND DUCTWORK TO BE REMOVED.
  21. UNIT VENTILATOR AND CONTROLS TO BE REMOVED. CAP LINES BELOW FLOOR AND PROVIDE END OF MAIN DRIP.
  22. UNIT VENTILATOR AND CONTROLS TO BE REMOVED. THE NEW UNIT INTO EXISTING S AND OR LINES.
  23. REPLACE EXISTING 1 1/2" FAT TRAP IN THIS AREA WITH NEW UNIT.
  24. EXHAUST FAN TO BE RELOCATED. RECONNECT ALL CONTROLS AT NEW LOCATION.
  25. UNIT VENTILATOR TO BE RELOCATED. RECONNECT CONTROLS AT NEW LOCATION.
  26. LOUVER TO BE RELOCATED.
  27. RELIEF HOOD AND DUCTWORK TO BE REMOVED.



BOILER ROOM STEAM / CR PIPING DEMOLITION PLAN  
1/8" = 1'-0" REF.

GROUND FLOOR PLAN MECHANICAL DEMOLITION  
1/8" = 1'-0" REF.

A1

A2