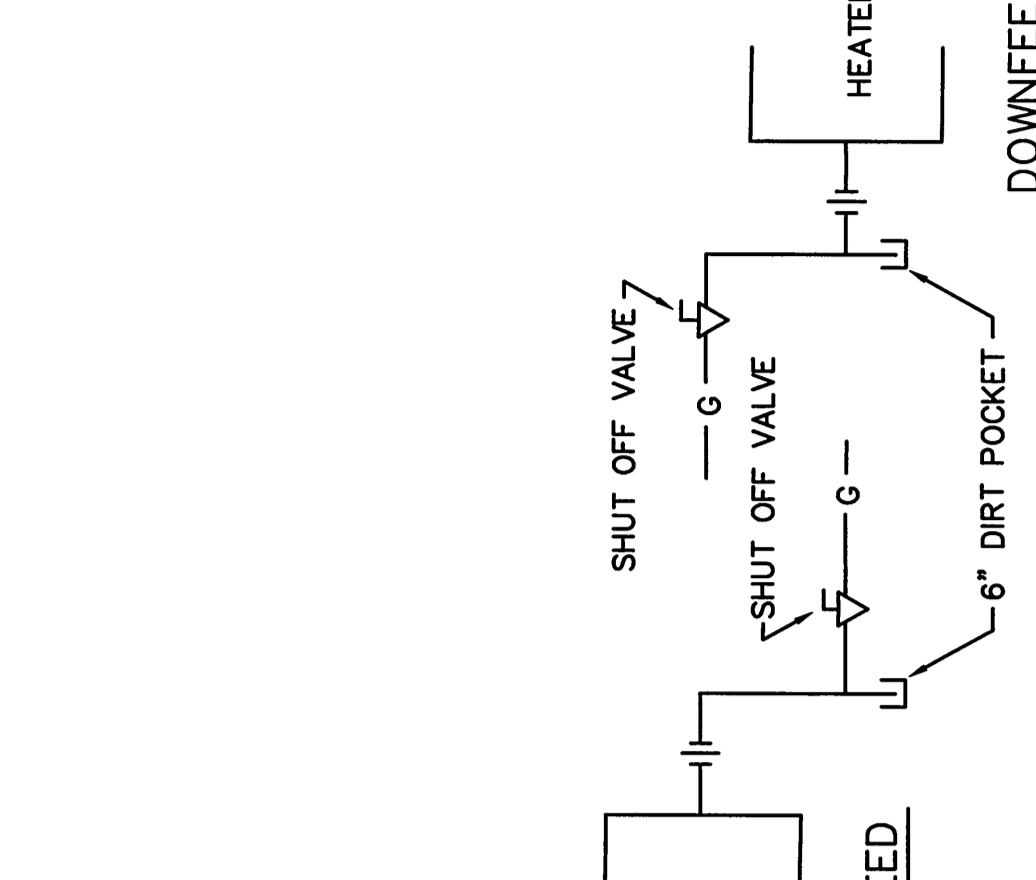


Mark	Date	Description
05-24-14		ISSUED FOR BID
05-17-14		OWNER REVIEW
		Issue Date
		Issue Date

Drawing Status	
----------------	--

PLUMBING LEGEND

- SANITARY SOIL OR WASTE - ABOVE FLOOR
- SANITARY SOIL OR WASTE - UNDER FLOOR
- VENT
- 3/1/4" PIPE SIZE / SLOPE PER FOOT
- 1/2" GAS LINE - ABOVE FLOOR
- 1/2" GAS LINE - UNDER FLOOR
- ROOF LEADER - ABOVE FLOOR
- ROOF LEADER - UNDER FLOOR
- PIPE RISER
- UNION
- GATE VALVE
- BALL VALVE
- CHECK VALVE
- COUPLER
- HOT WATER AT 140°F
- PRESSURE GAUGE WITH SHUT-OFF COCK
- SPRINKLER
- PRESSURE RELIEF VALVE
- HOSE BIBB (HBT) TYPE
- NON-FREEZE HOSE BIBB (NFHB)
- HOT AND COLD
- WASH DOWN VENT
- FLOOR CLEANOUT
- WALL CLEANOUT
- EXISTING EQUIPMENT TO BE REMOVED
- INTO EXISTING SYSTEM
- ABOVE FINISHED FLOOR
- BELOW FINISHED GRADE
- INVERT ELEVATION
- BELOW FINISHED FLOOR
- NOT IN CONTRACT
- N/C
- CONDENSATE DRAIN
- BALANCING VALVE
- GROUND WASTE



GAS PIPING DETAIL

- NOTES:
1. PROVIDE UNIONS AND REDUCERS AT HEATERS/APPLIANCES

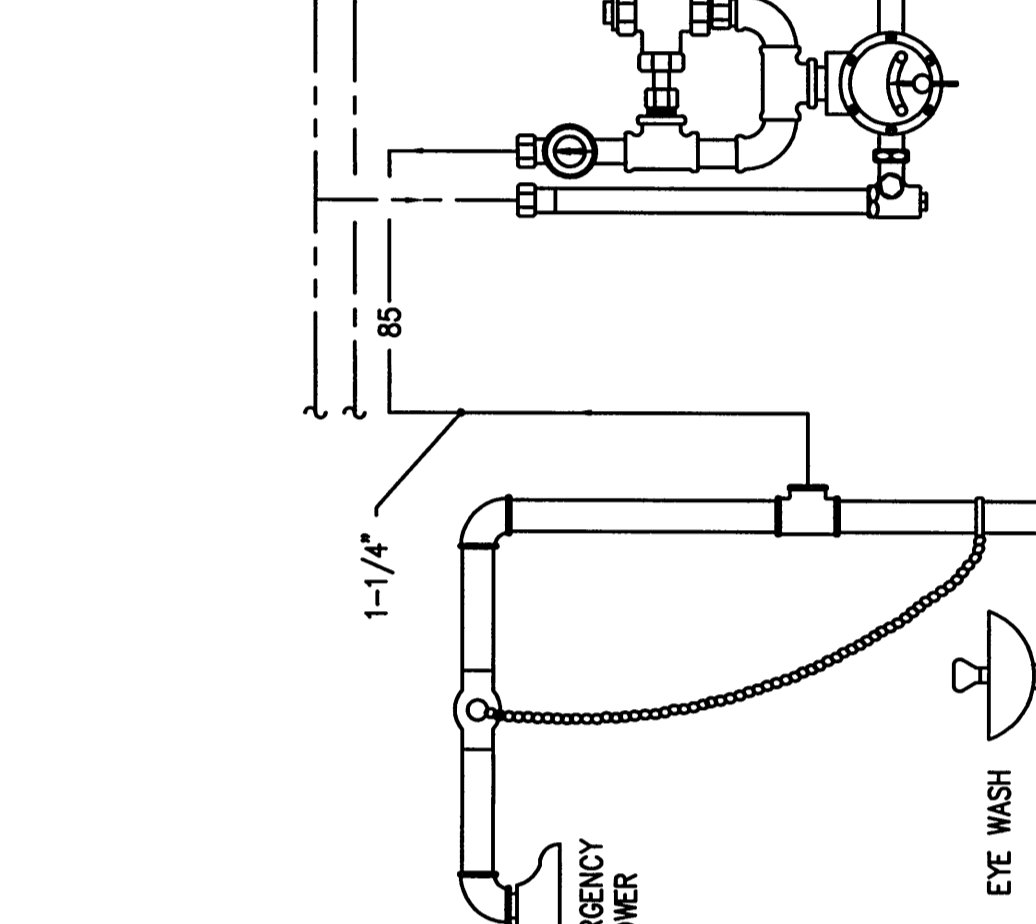
PUMP SCHEDULE (P)

UNIT	LOC.	SYS.	MODEL	TYPE	GPM	TOTL EFF (FT)	HP	RPM	POWER NOTES
P-4	BLK RM	DOE-BE	L	4	14	1/85	3620	115	2, 4
P-5	BLK RM	DOE-BE	L	4	14	1/85	3620	115	2, 4
P-6	BLK RM	DOE-BE	L	4	14	1/85	3620	115	2, 4
P-7	ELE PIT	SUMP	SE-50	SUB	20	30	1/2	3600	115

DHW HEATER (HTR)

UNIT	EVNT	LWT	GPM	WPD	RECOV	MODEL #	STOR	HP	POWER NOTES
HTR-1	180	180	56	5	800	H100SMBH-C-1M	1000	1/2	115

- NOTES:
1. BASED ON GENUINE



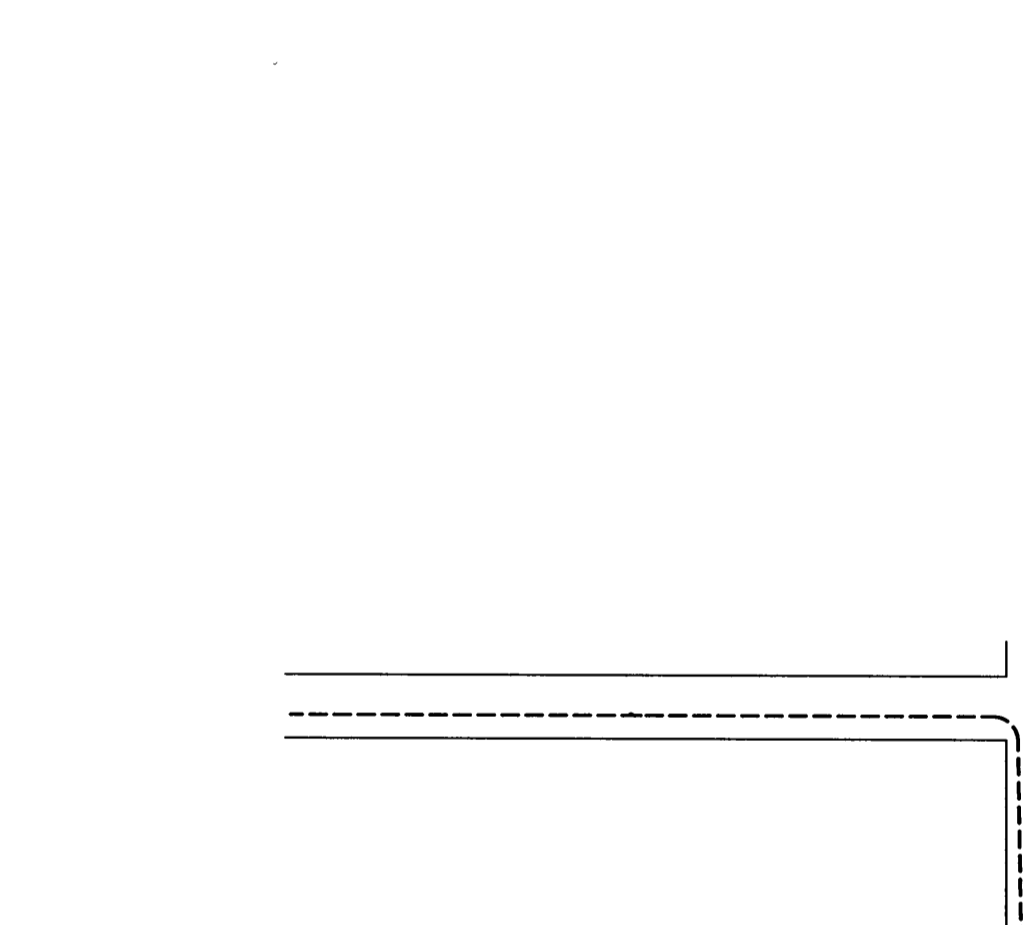
EMERGENCY SHOWER/EYE WASH P-6A DETAIL

- NOTES:
1. MIXING VALVE, MW-2, LEONARD MODEL TH-850, WITH 10 PSI WPD AT 28 GPM
2. HIGH-LOW TYPE WITH 1-1/4\"/>

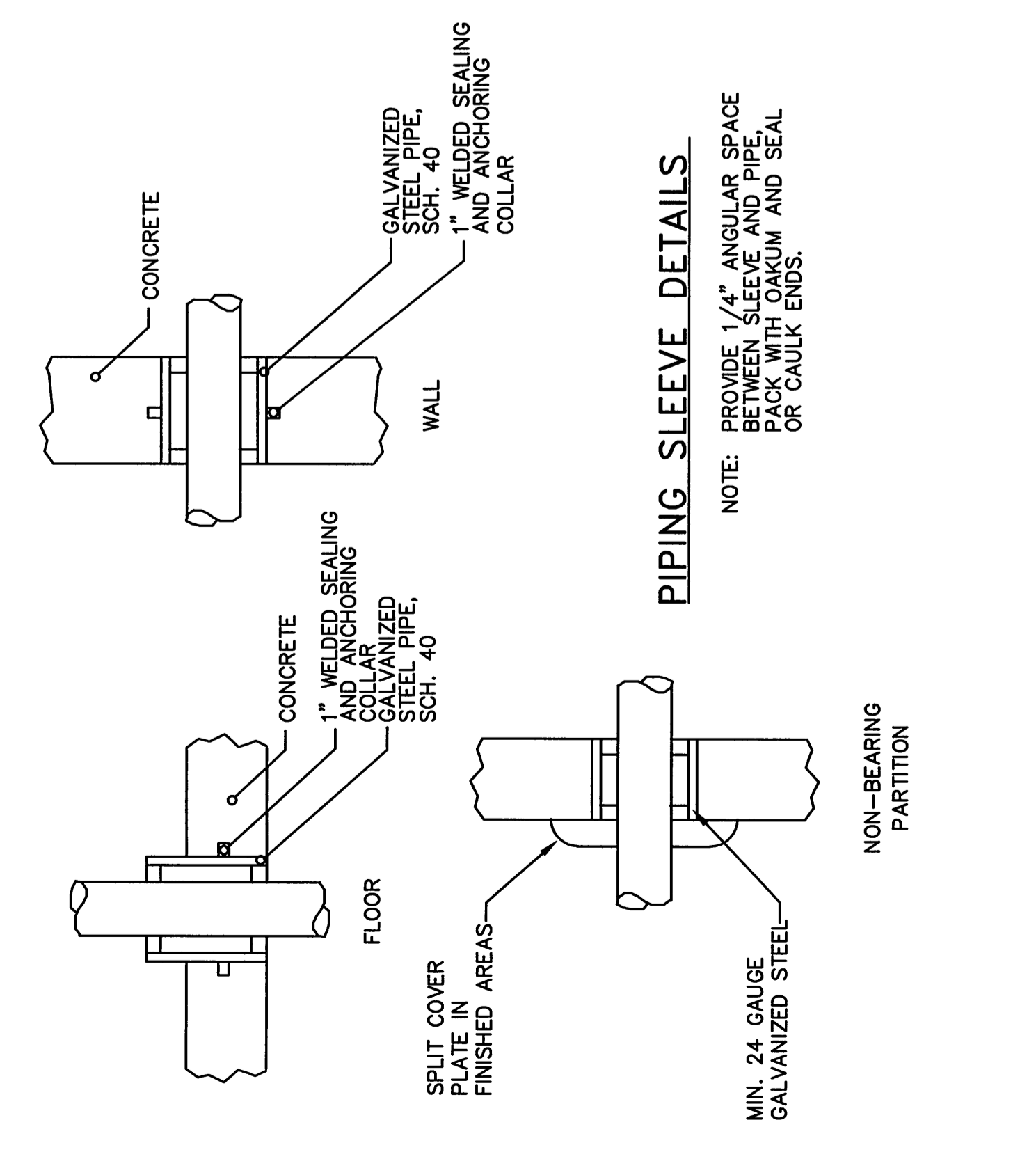
FIXTURE SCHEDULE (FIX)

UNIT	DESCRIPTION	MIN. LINE SIZE (INCHES)	H	C	W	V	HTG. HT. TO RIM	NOTES
P-1A	H.C. FLOOR VALVE W/ WC	1/2	1	1	1	1	16-1/2"	3
P-1B	H.C. WALL MOUNTED VALVE W/ WC	1/2	1	1	1	1	14-1/2"	3
P-2A	H.C. WALL URINAL	1/2	1/2	1	1	1	17"	3
P-2B	H.C. WALL URINAL	1/2	1/2	1	1	1	24"	3
P-3A	H.C. WALL LAVATORY	1/2	1/4	1/4	3/8	3/8	34"	
P-4A	H.C. SINK	1/2	1/2	1/2	1/2	1/2	FLOOR MNT	BST
P-4B	H.C. SINK	1/2	1/2	1/2	1/2	1/2	30"	
P-4C	H.C. SINK	1/2	1/2	1/2	1/2	1/2	32-3/8"	
P-4D	H.C. SINK	1/2	1/2	1/2	1/2	1/2	30"	
P-5A	H.C. BUILT-UP SHOWER	2	1-1/2	1/2	1/2	1/2	30" AFF	
P-5B	H.C. BUILT-UP SHOWER	2	1-1/2	1/2	1/2	1/2	30" AFF	
P-6A	EMERGENCY SHOWER & EYE WASH	1-1/4	1-1/4	1-1/4	1-1/4	1-1/4	FLOOR MNT	BST
P-7A	H.C. WATER COOLER	1-1/4	1-1/4	1-1/4	1-1/4	1-1/4	30"	
P-7B	H.C. WATER COOLER	1-1/4	1-1/4	1-1/4	1-1/4	1-1/4	30"	
P-8	MIRAPOL HYDROTHERAPY CONTROL	1	1/2	1/2	1/2	1/2	30" AFF	
FD	FLOOR DRAIN	1	1-1/2	1-1/2	1-1/2	1-1/2	24" ABS	1
DW	NON-FREEZE WALL HYDRANT	2	1-1/2	1-1/2	1-1/2	1-1/2	24" ABS	1
IM	ICE MACHINE	1	1	1	1	1	1/2	1, 2

- NOTES:
1. FIXTURE/APPLIANCE FINISHED BY OTHERS
2. PROVIDE INDIRECT WASTE TO FLOOR DRAIN
3. PROVIDE ELECTRIC CONTROLS

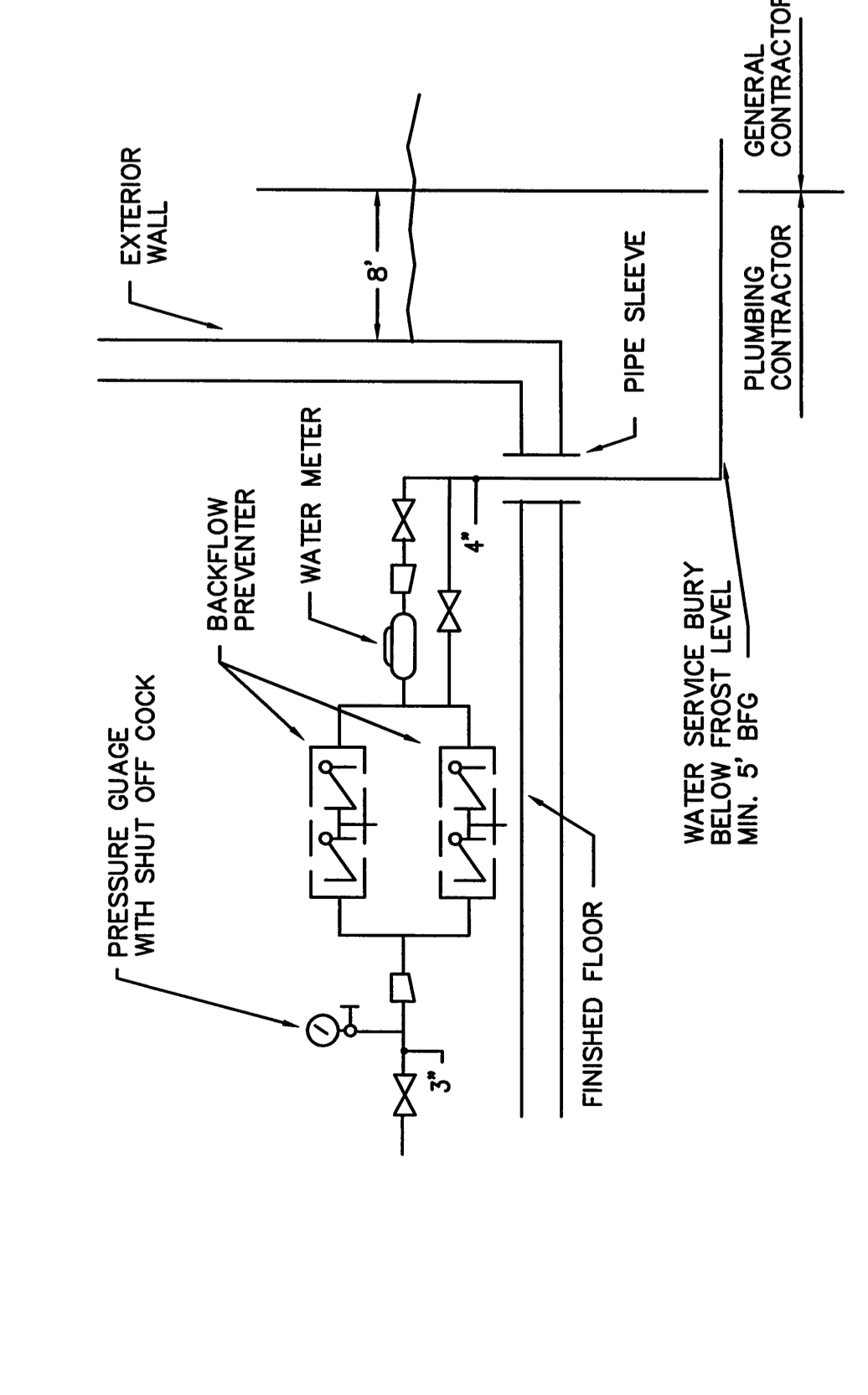


ISLAND DEMO STATION



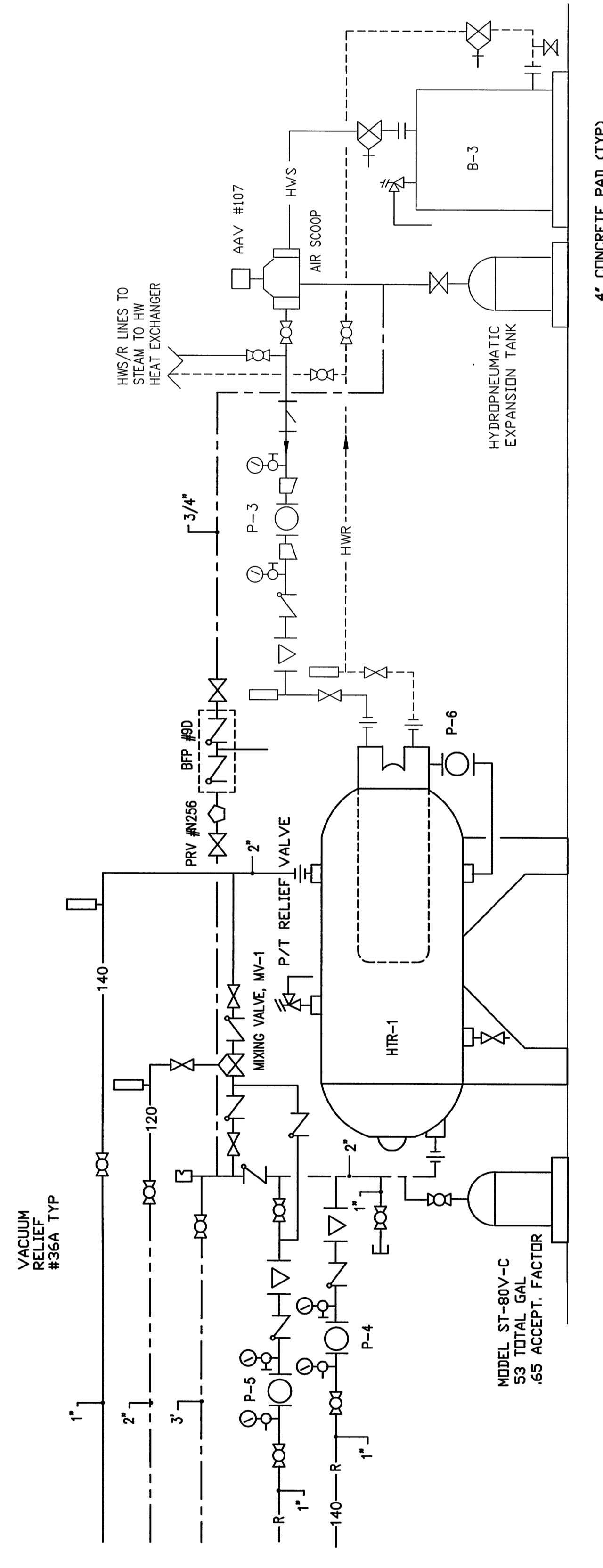
PIPING SLEEVE DETAILS

- NOTE: PROVIDE 1/4" ANGULAR SPACE BETWEEN BACKING AND ANCHORING COLLAR TO ALLOW FOR SEALING OR CAULK ENDS.



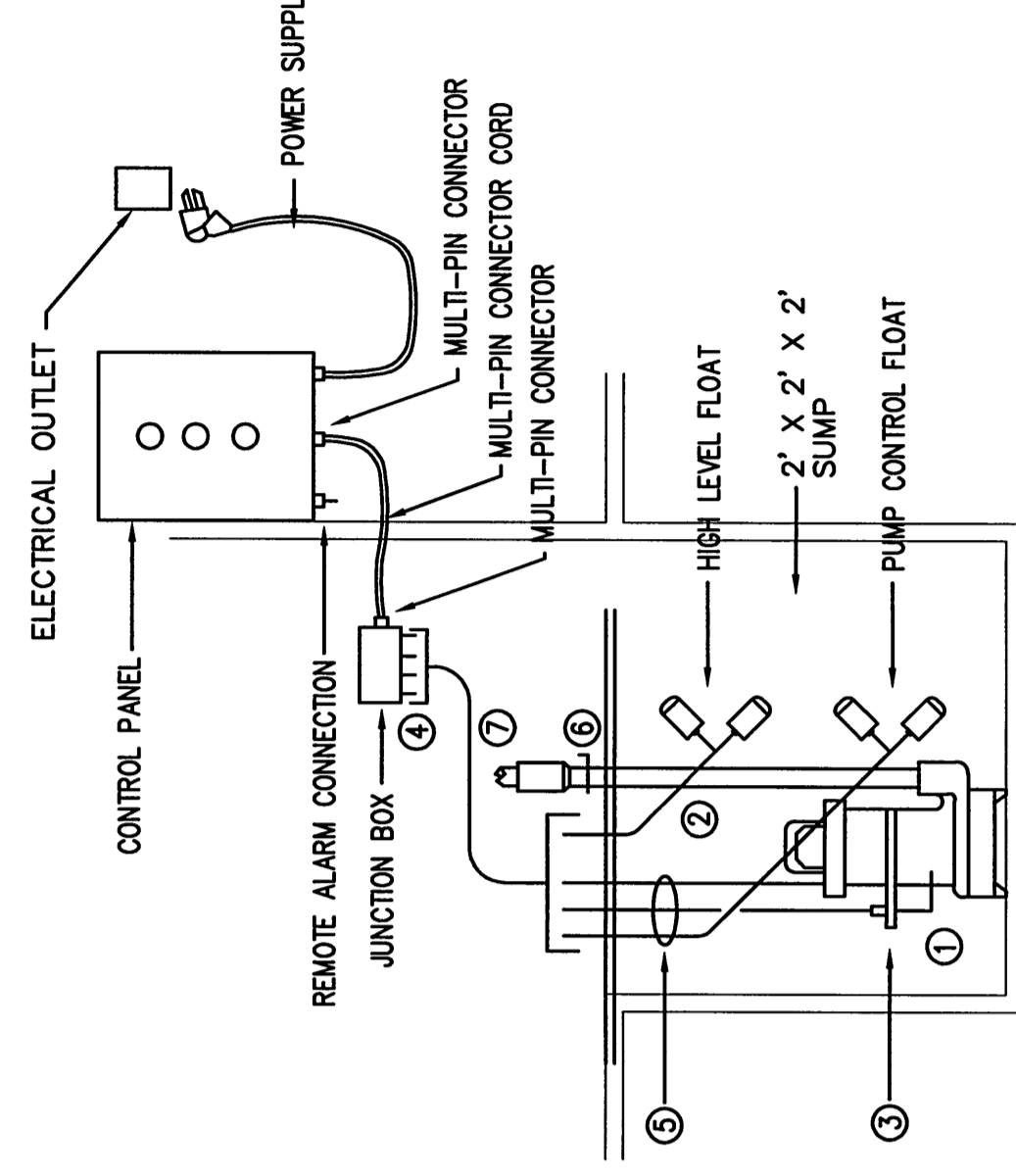
WATER SERVICE DETAIL

- NOTES:
1. WATER METERS TO BE PURCHASED FROM WATER COMPANY AND INSTALLED BY PLUMBING CONTRACTOR
2. WATER METER SPECIFICATIONS
SIZE: 1 1/2" DN
FLOW: 10 GPM
MAX. PRESSURE DROP (PSI): 7
MIN. INLET PRESSURE (PSI): 7
3. BACKFLOW PREVENTER SPECIFICATIONS
TYPE: RPZ
SIZE: 1/2"
PRESSURE DROP: 10



BOILER/DHW SYSTEM PIPING DIAGRAM

- NOTES:
1. BOILER CONTROLS TO MAINTAIN 180°F
2. PUMP, P-2, CONTROLLED BY ADJUST TO MAINTAIN TANK TEMPERATURE AT 140°F
3. PUMP, P-3, CONTROLLED BY ADJUST TO MAINTAIN TANK TEMPERATURE AT 140°F
4. PUMP, P-4, CONTROLLED BY ADJUST TO MAINTAIN TANK TEMPERATURE AT 140°F
5. BOILER, B-3, PUMP, P-3, AND ASSOCIATED PIPING AND CONTROLS SHALL BE INSTALLED IN ACCORDANCE WITH MANUFACTURER'S INSTRUCTIONS
6. MIXING VALVE, MV-1, MODEL, TH-188-12500-PRV, WITH 5 PSI WPD AT 48 GPM
7. HIGH-LOW TYPE WITH 1-1/4\"/>



ELEVATOR PIT SUMP PUMP DETAIL

- NOTES:
1. SUBMERSIBLE PUMP WITH 2\"/>