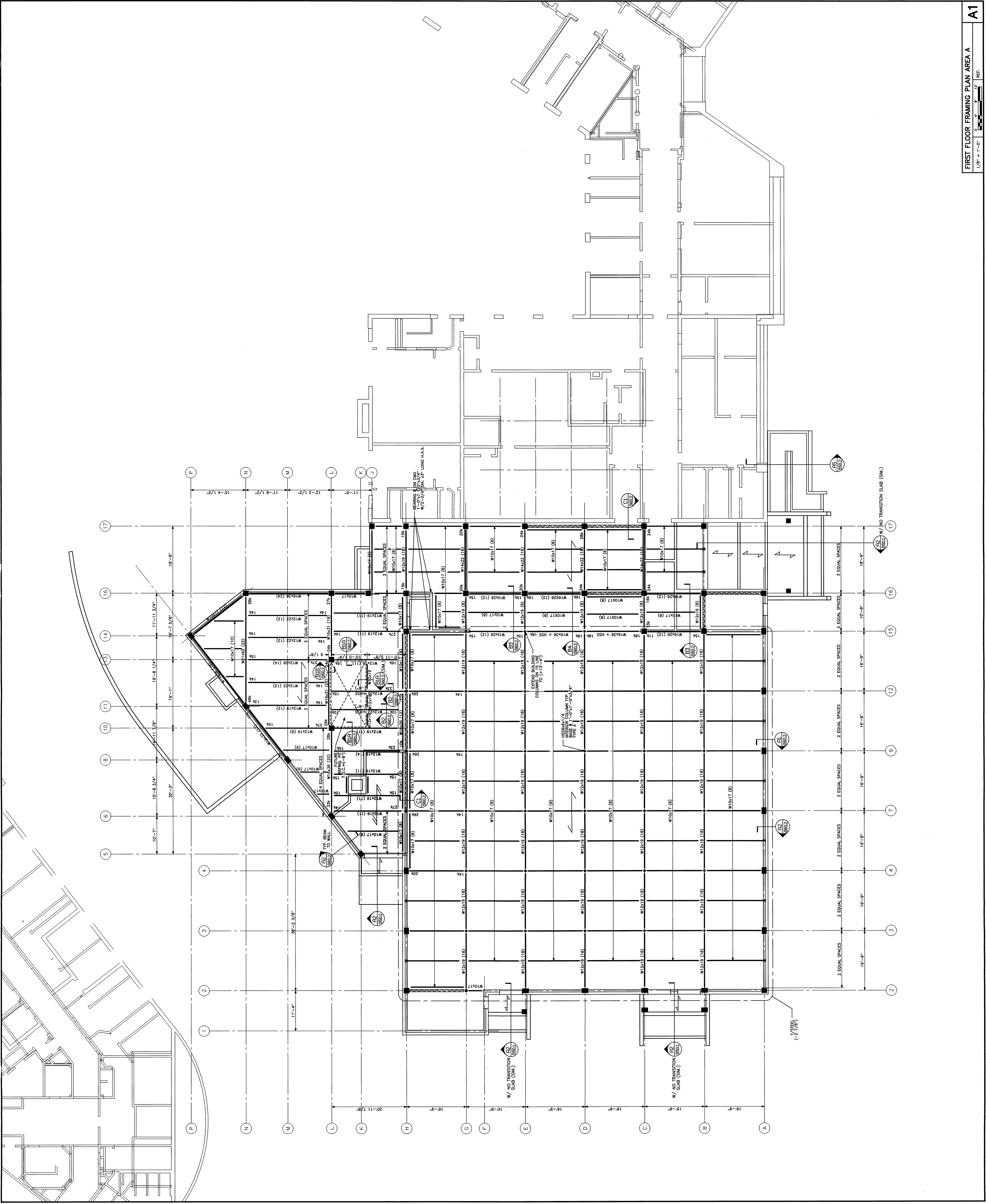


- FRAMING NOTES:**
1. ON SHEET S201
  2. SEE REFERENCED DRAWINGS FOR ADDITIONAL STRUCTURAL REQUIREMENTS.
  3. FROM FIRST FLOOR ELEVATION (1-1), INDICATE TOP OF BEARING STEEL ANCHORS PROJECTED TO COLUMN CENTERLINE.
  4. (ASTM A36) CAMEL Fy = 30 KSI
  5. --- INDICATES HORIZONTAL BRIDGING DETAILS. SEE DRAWING S401 FOR DETAILS.
  6. --- INDICATES DIAGONAL STEEL BRIDGING DETAILS. SEE DRAWING S401 FOR DETAILS.
  7. --- INDICATES SPAN OF 3 1/2" CONC. COMPOSITE SLAB WITH 6# W2 WIRE MESH 5/2" TOTAL THICKNESS.
  8. FLOOR SLAB ON 2" STK. COMPOSITE 5/2" TOTAL THICKNESS.
  9. ALL STEEL CONNECTIONS NOT SPECIFICALLY ANNOTATED AND DETAIL BY DRAWINGS TO BE ANALYZED AND DETAIL BY THE CONTRACTOR. STEEL FABRICATOR, THE COMPLETE RESPONSIBILITY FOR ALL STRUCTURAL ANALYSIS AND CONNECTIONS SHALL BE ASSIGNED TO HARRIMAN ASSOCIATES AND FORWARDED TO HARRIMAN ASSOCIATES AND CONTRACTOR FOR REVIEW AND APPROVAL. ALL STEEL CONNECTIONS SHALL BE REVEALED WITHOUT ALL SURFACING AND CONNECTION CALCULATIONS PROVIDED.
  10. BEAMS FOR ADDITIONAL LEVELS AND IN THE STRUCTURAL DRAWINGS, WELDED SHAVE AND THICKNESS NECESSARY TO ATTACH TO MAIN STEEL STRUCTURE.
  11. REFERENCED FRAMING AND CONNECTIONS, TYP.
  12. SEE DETAIL S2750.9. WELDED CONNECTION.
  13. (XX) INDICATES NUMBER OF 3/4" DIA. X 16" LONG ANCHORS TO BE SPACED ON BEAM TOP FLANGE.
  14. --- STRUCTURAL SLAB SEE A2/S50.1 ON CONCRETE DETAIL.
  15. SEE A2/S50.2 FOR TYPICAL BEAM BEARING ON CONCRETE DETAIL.
  16. MEMBERS SHALL BE DESIGNED FOR BEAM TO BEAM CONNECTIONS. ALL BEAMS SHALL BE DESIGNED FOR A MINIMUM CONNECTION OF 10L.
  17. STRUCTURAL WELDS SEE ARCHITECTURAL DRAWINGS AND BEAM TO BE CONSIDERED AS PER A2/S50.2.

Revision	Date	Description
01	02-27-04	DD REVIEW
02	03-17-04	OWNER REVIEW
03	04-08-04	ISSUED FOR BID



PLOT DATE: May 27 2004 11:53:11 AM C:\Users\jg\Documents\Projects\02103\AreaA\02103\_A1.dwg (S20.1) Plot by gpc