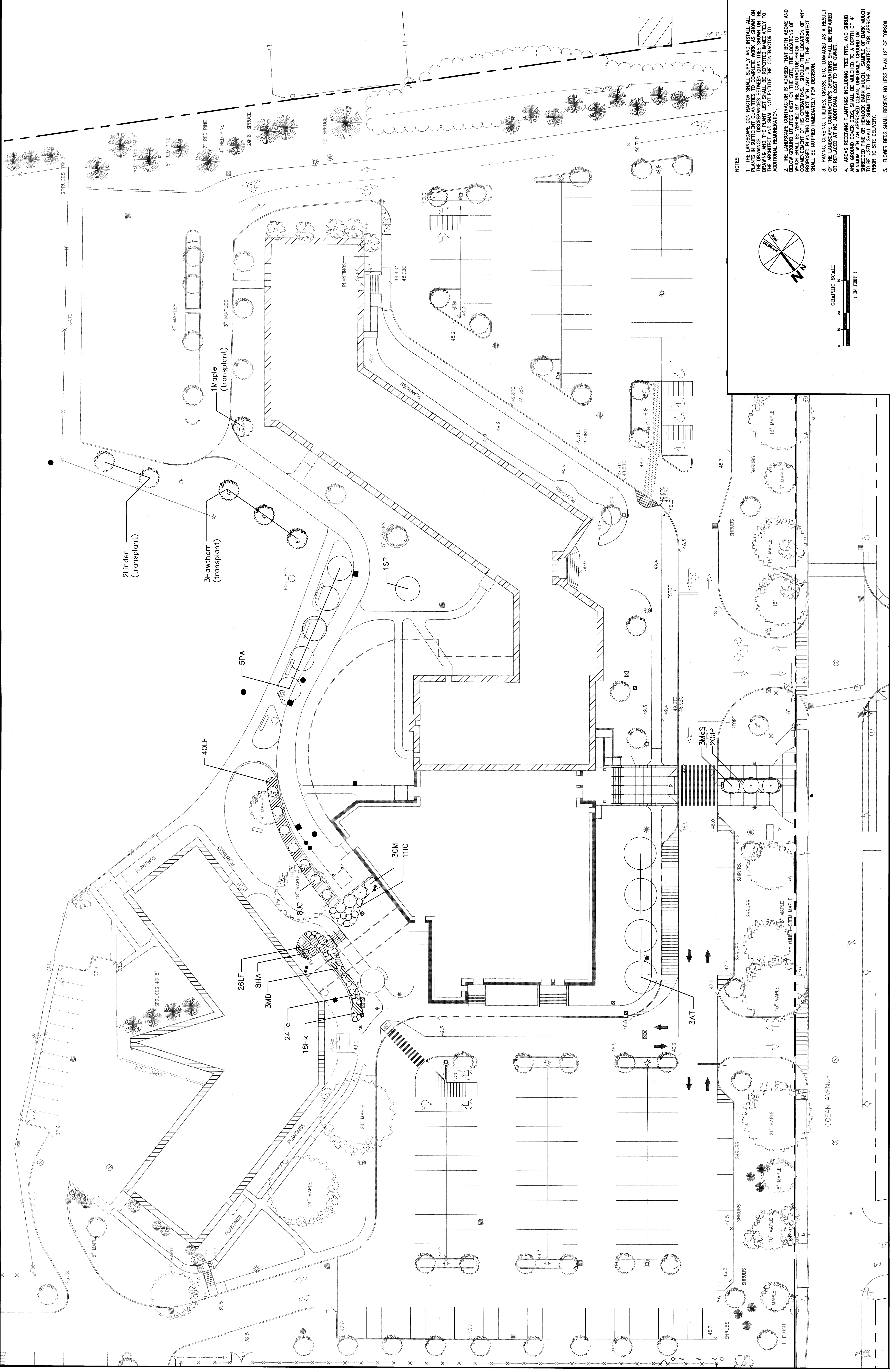
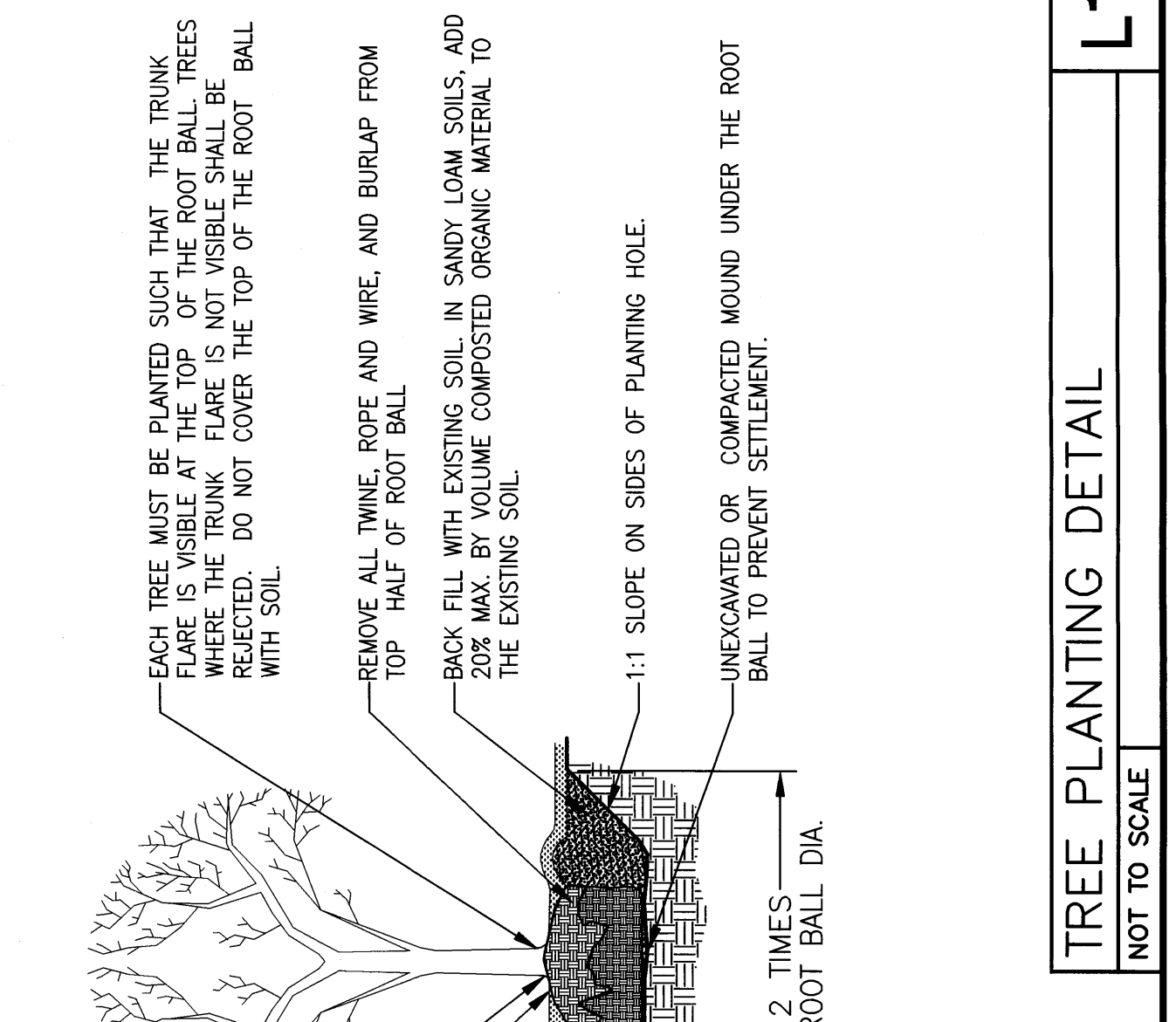
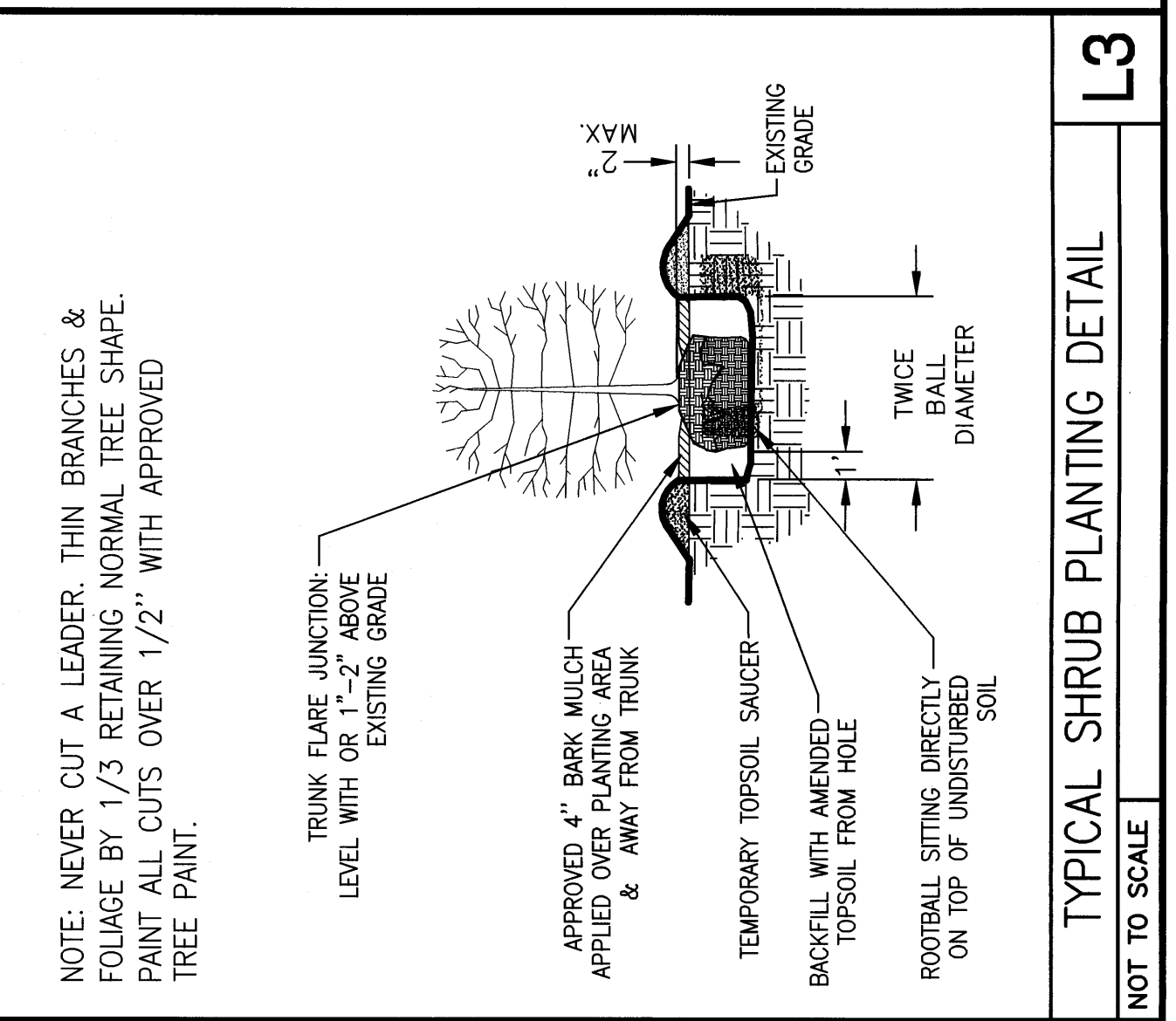


05-28-04	ISSUED FOR BID
09-17-04	OWNER REVIEW
02-27-04	D.D. REVIEW
09-25-03	PLANNING BOARD
Mark	Date
Drawn Date	Description



NOTES:
 1. PLANTING CONTRACTOR SHALL VERIFY AND INSTALL ALL PLANTS IN SUFFICIENT QUANTITIES TO COMPLETE WORK AS SHOWN ON THE DRAWINGS. DISCREPANCIES BETWEEN QUANTITIES SHOWN ON THE DRAWINGS AND QUANTITIES SHOWN ON THE SITE SHALL BE THE RESPONSIBILITY OF THE CONTRACTOR. THE ARCHITECT AND SHALL NOT ENTITLE THE CONTRACTOR TO ANY ADDITIONAL REMERATION.
 2. THE LANDSCAPE CONTRACTOR IS ADVISED THAT BOTH ABOVE AND BELOW GROUND UTILITIES, INCLUDING BUT NOT LIMITED TO, WATER MAINS, GAS MAINS, AND CABLES, SHALL BE LOCATED PRIOR TO THE START OF ANY CONSTRUCTION WORK. THE CONTRACTOR SHALL BE RESPONSIBLE FOR OBTAINING ALL NECESSARY PERMITS AND APPROVALS FROM THE APPROPRIATE AGENCIES PRIOR TO THE START OF ANY CONSTRUCTION WORK.
 3. PLANTING CONTRACTOR SHALL BE RESPONSIBLE FOR OBTAINING ALL NECESSARY PERMITS AND APPROVALS FROM THE APPROPRIATE AGENCIES PRIOR TO THE START OF ANY CONSTRUCTION WORK.
 4. AREAS INCLUDING PLANTINGS INCLUDING TREE PITS, AND SHRUB PITS SHALL BE PROTECTED BY THE CONTRACTOR FROM ALL CONSTRUCTION ACTIVITIES. THE CONTRACTOR SHALL BE RESPONSIBLE FOR OBTAINING ALL NECESSARY PERMITS AND APPROVALS FROM THE APPROPRIATE AGENCIES PRIOR TO THE START OF ANY CONSTRUCTION WORK.
 5. FLOWER BEDS SHALL RECEIVE NO LESS THAN 12" OF TOPSOIL ACCORDING TO THE SPECIFICATIONS OF THE LANDSCAPE ARCHITECT.
 6. PLANT MATERIALS CALLED FOR IN THIS DRAWING SHALL MEET OR EXCEED THE SPECIFICATIONS OF THE AMERICAN STANDARDS FOR NURSERY STOCK (LATEST EDITION) AS SET FORTH BY THE AMERICAN ASSOCIATION OF NURSERYMEN.
 7. ALL PLANTS SHALL BE INSTALLED IN ACCORDANCE WITH THE AMERICAN STANDARDS FOR NURSERY STOCK (LATEST EDITION) AS SET FORTH BY THE AMERICAN ASSOCIATION OF NURSERYMEN.
 8. IF SUBSTITUTIONS ARE NECESSARY, CONTRACTOR SHALL NOTIFY ARCHITECT OF PROPOSED REPLACEMENT PLANTS. SUBSTITUTIONS SHALL BE OF SIMILAR BOTANICAL CHARACTERISTICS.
 9. TREES NORMALLY DO NOT NEED TO BE STAKED AND STAKING CAN BE REMOVED UPON THE APPROVAL OF THE LANDSCAPE ARCHITECT. IT IS EXPECTED THAT THE APPROVAL OF THE LANDSCAPE ARCHITECT BY IT IS EXPECTED THAT THE REASONS WHY TREES DO NOT REMAIN STRAIGHT. THE FOLLOWING ARE REASONS WHY TREES DO NOT REMAIN STRAIGHT:
 a. TREES WITH POOR - QUALITY ROOT BALLS OR ROOT BALLS THAT HAVE BEEN CRACKED OR DAMAGED. REJECT RATHER THAN STAKE.
 b. TREES THAT HAVE GROWN TOO CLOSE TOGETHER IN THE NURSERY. REJECT RATHER THAN STAKE.
 c. TREES WITH WEAK TRUNKS. REJECT RATHER THAN STAKE.
 d. PLANTING PROCEDURES THAT DO NOT ADEQUATELY TAMP SOILS AROUND THE ROOT BALL. CORRECT THE PLANTING PROCEDURE.
 e. ROOT BALLS PLACED ON SOFT SOIL. TAMP SOILS UNDER ROOT BALL PRIOR TO PLANTING.
 f. ROOT BALLS WITH VERY SANDY SOIL OR VERY WET CLAY SOIL. STAKE IMMEDIATELY.
 g. TREES LOCATED IN A PLACE OF EXTREMELY WINDY CONDITIONS. STAKE IMMEDIATELY.
 h. TREES LOCATED IN PARKING LOT ISLANDS. STAKE IMMEDIATELY.

QTY	Code	Common Name	Scientific Name	Size Cal.	Size Ht.	Root	Notes
2	1/2-3" C	Three-Flowered Maple	Acer triflorum	clump	10-12'	B&B	Specimen tree form
4	AT	Cornellian Cherry	Cornus Mas	6-8'	6-8'	B&B	specimen
3	CM	Sentinel Cherry	Malus "Sentinel"	1 1/2'	-	B&B	specimen
3	MaS	Accolade Cherry	Prunus "Accolade"	1 1/2'	-	B&B	specimen
5	PA	Japanese Stewertia	Stewartia pseudocamellia	6"	-	B&B	transplant
1	SP	Hawthorn	Linden	6"	-	B&B	transplant
3	-	Maple	-	4"	-	-	transplant
1	-	Maple	-	-	-	-	transplant
10	AA	Red Chockberry	Aronia a. "Brilliantissima"	-	2-3'	Cont.	plant 5 o.c.
8	HA	Anabelle Hydrandea	Hydrandea a. "Anabelle"	-	2-3'	Cont.	plant 4 o.c.
11	IG	Inkberry	Ilex glabra "Compacta"	-	2-3'	Cont.	plant 4 o.c.
8	JC	Emerald Sea Juniper	Juniperus c. "Emerald Sea"	-	12-18"	Cont.	plant 4 o.c.
20	JP	Japanese Garden Juniper	Juniperus procumbens "nana"	-	12-18"	Cont.	plant 4 o.c.
66	LF	Compact Drooping Leucothoe	Leucothoe fontanensisina "Compacta"	-	12-18"	Cont.	plant 3 o.c. in hatched area.
3	MD	Russian Cypress	Microbiota decussata	-	12-18"	Cont.	plant 3 o.c.
18	Hk	Hosia Kross Regal	Hosia Kross Regal	-	1G	-	plant 3 o.c.
24	Tc	Foam flower	Tierella cordifolia	-	1G	-	plant 12' o.c.



NOTE:
 • SELECTED TREES MUST HAVE TRUNK FLARES IN CENTER OF TOP HALF OF ROOT BALL
 • ROOTBALL TO BE PLANTED IN CENTER OF PLANTING HOLE
 • UNCOMPACTED OR COMPACTED MOUND UNDER THE ROOT BALL TO PREVENT SETTLEMENT.
 • 1:1 SLOPE ON SIDES OF PLANTING HOLE
 • 2-TIMES THE ROOT BALL DIA.
 • DO NOT HEAVY PRUNE THE TREE AT PLANTING. PRUNE ONLY TO REMOVE DEAD BRANCHES. DO NOT REMOVE BRANCHES THAT ARE NEAR THE TRUNK OR THAT ARE NEAR THE TRUNK. DO NOT REMOVE BRANCHES THAT ARE NEAR THE TRUNK. DO NOT REMOVE BRANCHES THAT ARE NEAR THE TRUNK.
 • STAKE TREES ONLY UPON THE APPROVAL OF THE LANDSCAPE ARCHITECT. SEE WRAPPING DETAIL.