

HARRIMAN ASSOCIATES
 Architects & Engineers
 One Adams Berry Brook
 Portland, ME 04103
 207.764.0000
 www.harriman.com
 Building Construction
 Since 1899
 © 2004

**SITE OF MAIN
 FRANK
 L. CHAMBERLAIN
 HISTORIC MONUMENT**

**CHEVERUS
 HIGH SCHOOL
 PHASE 3-ADDITIONS
 & RENOVATIONS**
 PORTLAND, ME

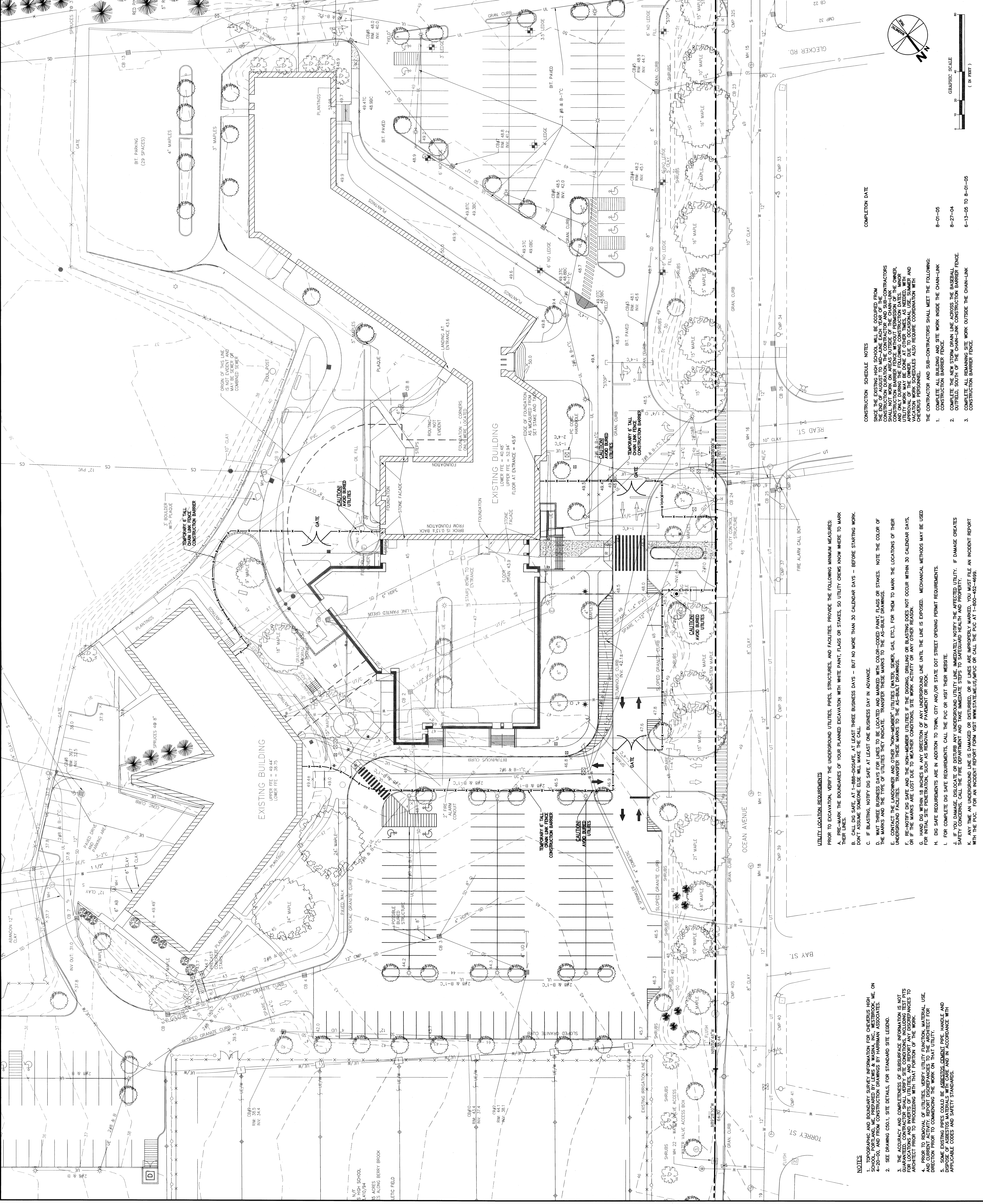
Project No. 02103
 Key Plan

Mark	Date	Description
05-28-04		ISSUED FOR BID
		Issue Dates

Author	Checked	Approved

**SITE
 CONSTRUCTION
 BARRIER PLAN**

Project No. 02103
 Date: 05-28-04
 Scale: AS SHOWN
 Drawing Number: C21.1



COMPLETION DATE

CONSTRUCTION	SCHEDULE	NOTES
1. COMPLETE ALL BUILDING AND SITE WORK INSIDE THE CHAIN-LINK CONSTRUCTION BARRIER FENCE.	8-01-05	
2. COMPLETE THE NEW STORM DRAIN LINE ACROSS THE BASEBALL OUTFIELD, SOUTH OF THE CHAIN-LINK CONSTRUCTION BARRIER FENCE.	8-27-04	
3. COMPLETE ALL REMAINING SITE WORK OUTSIDE THE CHAIN-LINK CONSTRUCTION BARRIER FENCE.	6-13-05 TO 8-01-05	

UTILITY LOCATION REQUIREMENTS
 PRIOR TO EXCAVATION, VERIFY THE UNDERGROUND UTILITIES, PIPES, STRUCTURES, AND FACILITIES. PROVIDE THE FOLLOWING MINIMUM MEASURES:

- PRE-MARK THE BOUNDARIES OF YOUR PLANNED EXCAVATION WITH WHITE PAINT, FLAGS OR STAKES, SO UTILITY CREWS KNOW WHERE TO MARK THEIR LINES.
- CALL DIG SAFE, AT 1-888-DIGSAFE, AT LEAST THREE BUSINESS DAYS - BUT NO MORE THAN 30 CALENDAR DAYS - BEFORE STARTING WORK. DON'T ASSUME SOMEONE ELSE WILL MAKE THE CALL.
- IF BLASTING, NOTIFY DIG SAFE AT LEAST ONE BUSINESS DAY IN ADVANCE.
- WAIT THREE BUSINESS DAYS FOR LINES TO BE LOCATED AND MARKED WITH COLOR-CODED PAINT, FLAGS OR STAKES. NOTE THE COLOR OF THE MARKS AND THE TYPE OF UTILITIES THEY INDICATE. TRANSFER THESE MARKS TO THE AS-BUILT DRAWINGS.
- CONTACT THE LANDOWNER AND OTHER "NON-MEMBER" UTILITIES (WATER, SEWER, GAS, ETC.), FOR THEM TO MARK THE LOCATIONS OF THEIR UNDERGROUND FACILITIES. TRANSFER THESE MARKS TO THE AS-BUILT DRAWINGS.
- RE-NOTIFY DIG SAFE AND THE NON-MEMBER UTILITIES IF THE DIGGING, DRILLING OR BLASTING DOES NOT OCCUR WITHIN 30 CALENDAR DAYS, OR IF THE MARKS ARE LOST DUE TO WEATHER CONDITIONS. SITE WORK ACTIVITY OR ANY OTHER REASON.
- HAND DIG WITHIN 18 INCHES IN ANY DIRECTION OF ANY UNDERGROUND LINE UNTIL THE LINE IS EXPOSED. MECHANICAL METHODS MAY BE USED FOR INITIAL SITE PENETRATION, SUCH AS REMOVAL OF PAVEMENT OR ROCK.
- DIG SAFE REQUIREMENTS ARE IN ADDITION TO TOWN, CITY AND/OR STATE DOT STREET OPENING PERMIT REQUIREMENTS.
- FOR COMPLETE DIG SAFE REQUIREMENTS, CALL THE PUC OR VISIT THEIR WEBSITE.
- IF YOU DAMAGE, DISLOCATE OR DISTURB ANY UNDERGROUND UTILITY LINE IMMEDIATELY NOTIFY THE AFFECTED UTILITY. IF DAMAGE CREATES SAFETY CONCERNS, CALL THE FIRE DEPARTMENT AND TAKE IMMEDIATE STEPS TO SAFEGUARD HEALTH AND PROPERTY.
- ANY TIME AN UNDERGROUND LINE IS DAMAGED OR DISTURBED, OR IF LINES ARE IMPROPERLY MARKED, YOU MUST FILE AN INCIDENT REPORT WITH THE PUC. FOR AN INCIDENT REPORT FORM VISIT WWW.STATE.ME.US/MPUC OR CALL THE PUC AT 1-800-682-4689.

NOTES

- TOPOGRAPHIC AND BOUNDARY SURVEY INFORMATION FOR CHEVERUS HIGH SCHOOL, PORTLAND, ME, PREPARED BY LEWIS & WAGNA, INC., WESTBROOK, ME, ON 4-20-00, AND FROM CONSTRUCTION DRAWINGS BY HARRIMAN ASSOCIATES.
- SEE DRAWING CS01.1, SITE DETAILS FOR STANDARD SITE LEGEND.
- THE ACCURACY AND COMPLETENESS OF SURFACE INFORMATION IS NOT GUARANTEED. CONTRACTOR SHALL VERIFY SITE CONDITIONS, INCLUDING TEST PITS ARCHITECT PRIOR TO PROCEEDING WITH THAT PORTION OF THE WORK.
- PRIOR TO REMOVAL OF UTILITIES, VERIFY UTILITY FUNCTION, MATERIAL, USE, AND CURRENT ACTIVITY. REPORT DISCREPANCIES TO THE ARCHITECT FOR DIRECTION PRIOR TO COMMENCING THE WORK ON THAT UTILITY.
- SOME EXISTING PIPES COULD BE ASBESTOS-CEMENT PIPE. HANDLE AND REMOVE ASBESTOS-CEMENT PIPE AND IN ACCORDANCE WITH APPLICABLE CODES AND SAFETY STANDARDS.

