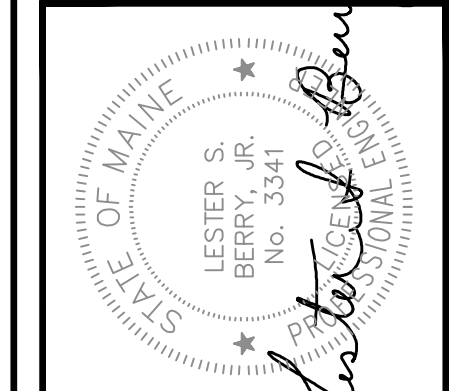


LOCATION MAP
SCALE: 1" = 2 MILES

NO.	DATE	REVISION DESCRIPTION
1	1/22/13	Condo Review
2	2/7/13	Rev'd. Per Condo Comments
3	3/21/13	Rev'd. Per City Comments
4	6/10/13	Rev'd. Per City Comments



NOTES:

- OWNER: BAYVIEW CONDOMINIUMS
OCEAN AVENUE
PORTLAND, MAINE
- SURVEYOR: ROBERT C. LIBBY JR., PLS #2190
BH2M
28 STATE STREET
GORHAM, MAINE
- TAX MAP REFERENCE: MAP J8NW, PARCEL 159 A 007
- ZONING: R-3
- PLAN REFERENCE: PLAN ENTITLED "BAYVIEW CONDOMINIUMS,"
DATED APRIL 1981, BY BH2M, JOB #81-018
- BENCHMARK: CITY OF PORTLAND DATUM, BECHMARK
#7, X CHISELED IN BOLT OF HYDRANT,
CORNER OF OCEAN AVE. AND TORREY
STREET

BH2M
 Berry, Huff, McDonald, Milligan Inc.
 Engineers, Surveyors
 28 State Street
 Gorham, Maine 04038
 Tel: (207) 859-2771
 Fax: (207) 859-8250

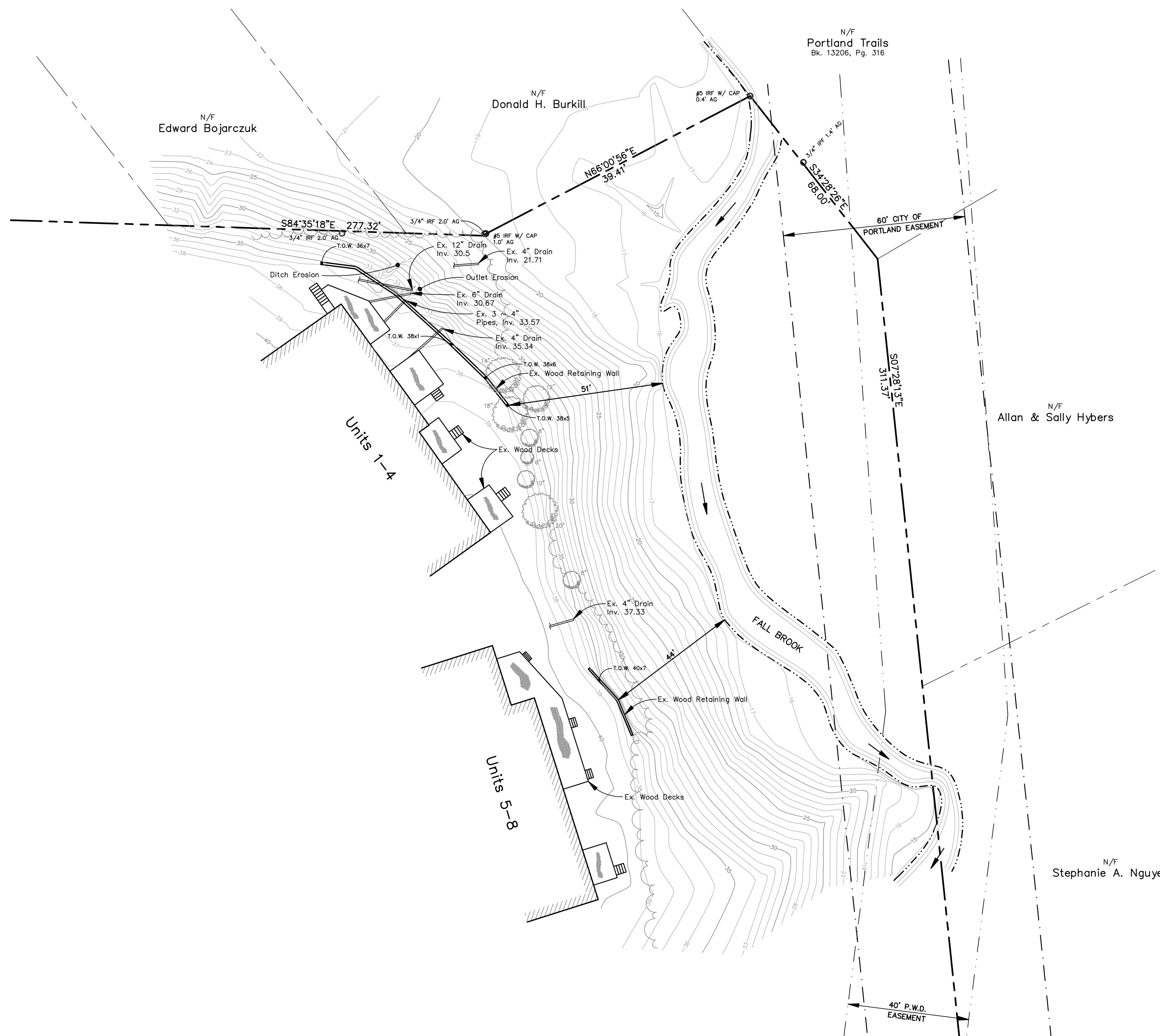
FOR
 Bayview Condominiums
 Ocean Avenue
 Portland, ME

EXISTING CONDITIONS
 BAYVIEW CONDOMINIUMS
 OCEAN AVENUE
 PORTLAND, MAINE

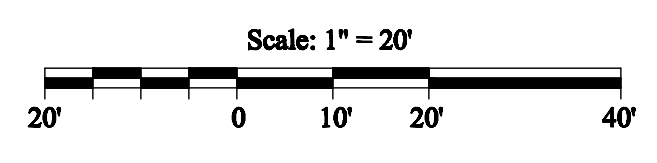
DESIGNED Survey	DATE Jan. 2013
DRAWN W. Pelkey	SCALE As Noted
CHECKED R. Libby Jr.	JOB. NO. 12128

SHEET
1

REPRODUCTION OR REUSE OF THIS DOCUMENT WITHOUT THE EXPRESSED WRITTEN CONSENT OF BH2M INC. IS PROHIBITED



SYMBOL	DESCRIPTION
○ IPF/IRF	IRON PIPE/ROD FOUND
---	PROPERTY LINE
---	EDGE OF PAVEMENT
---	EXISTING CONTOUR
A.G.	ABOVE GROUND
N/F	NOW OR FORMERLY



C:\Users\w\OneDrive\Documents\1225\Main\1225.dwg, 6/11/2013 5:05:04 PM