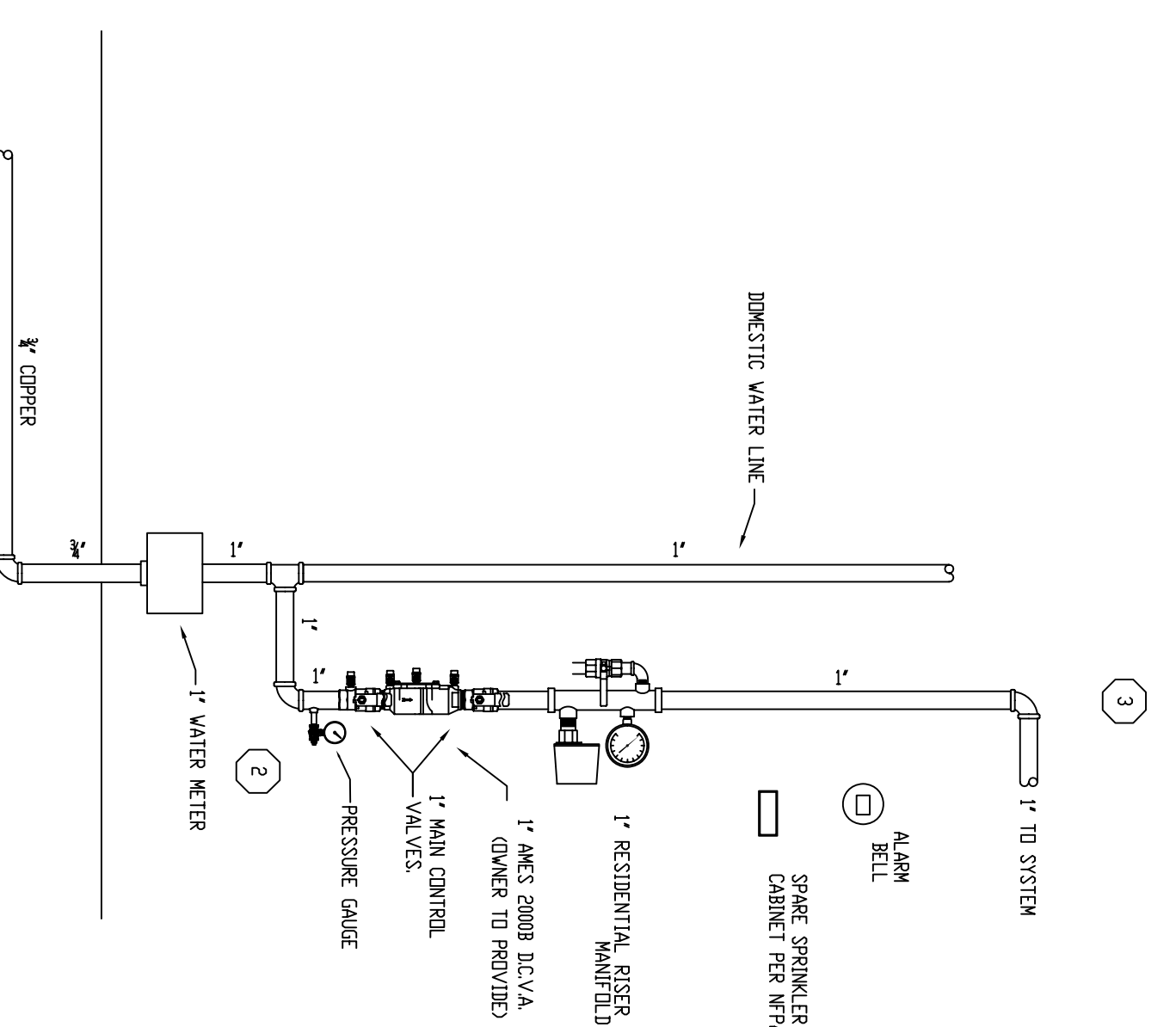


SECTION VIEW  
SCALE 1/2"=1'-0"

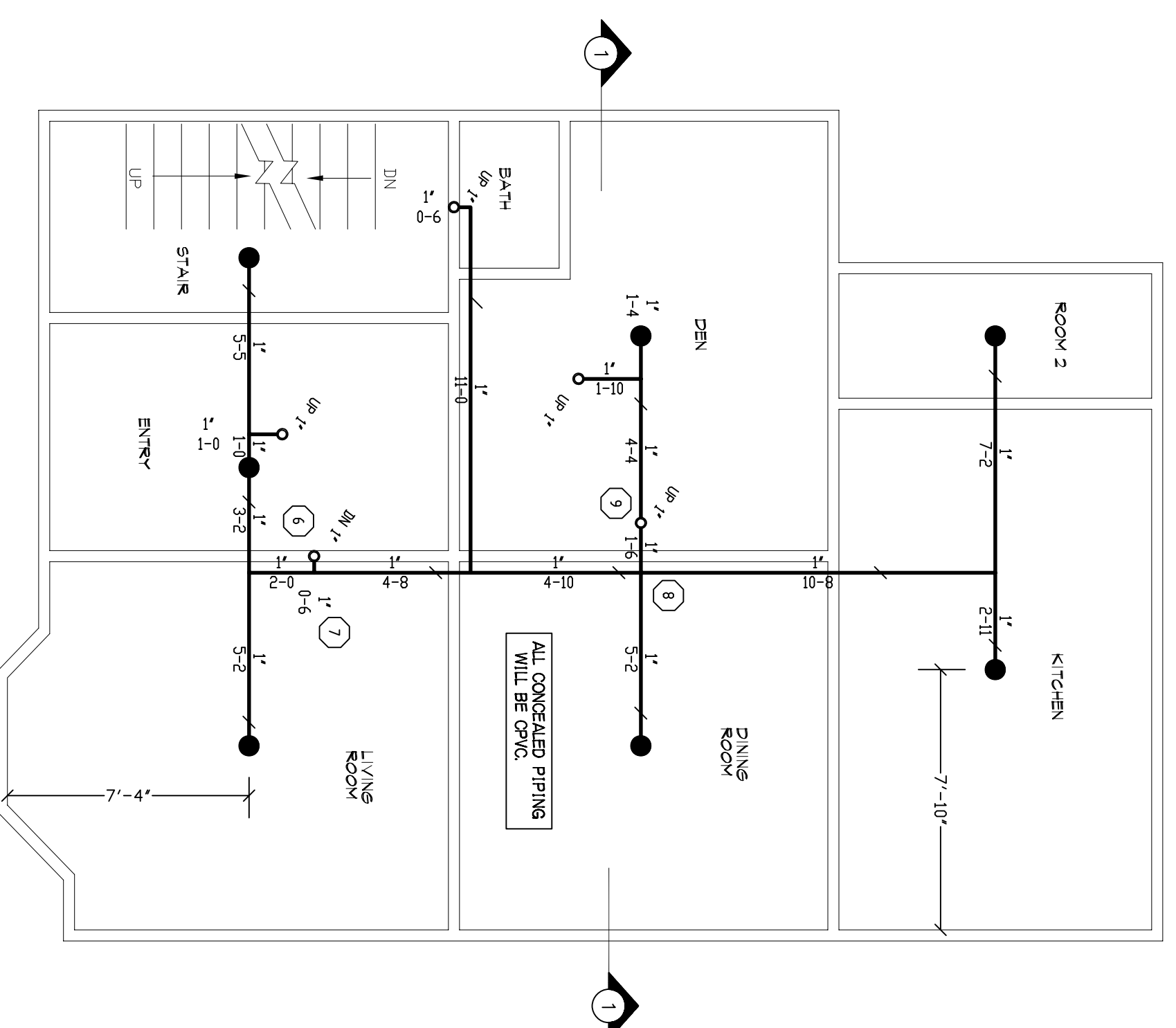
GENERAL NOTES

SYSTEM TO BE DESIGNED AND INSTALLED IN ACCORDANCE WITH NFPA 13 AND  
 SPRINKLER MANUFACTURER'S RECOMMENDATIONS. ALL HANGERS SHALL BE APPROVED  
 BLACKWATER PLASTIC PVC DESIGNED AND APPROVED TO BE USED WITH THIS STANDARD  
 HANGER TYPE. RESISTANT PENDANT SPRINKLERS TO BE 183KPa.  
 ALL SPRINKLER HEADS SHALL BE PROVIDED WITH A 1/2" NUT AND WASHER.  
 ALL WIRING OF DEVICES BY OTHERS.  
 SPARE SPRINKLERS OF EACH TYPE SHALL BE PROVIDED PER NFPA 13.

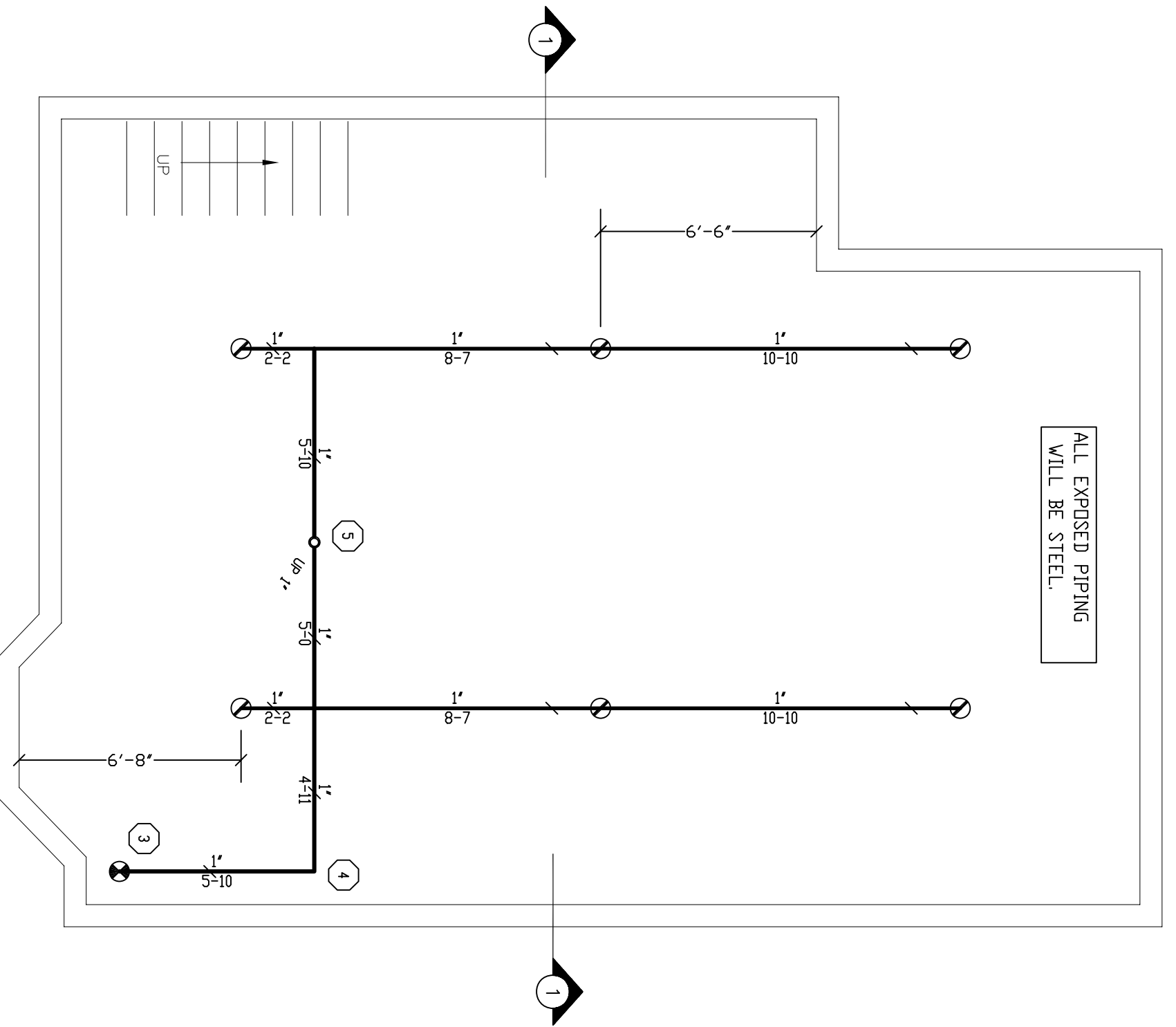
- SPRINKLERS MAY BE OMITTED FROM THE FOLLOWING:
- 1) BATHROOMS WHERE THE AREA DOES NOT EXCEED 35 SQ. FT. AND THE WALLS AND CEILING PROVIDING A 15 MINUTE THERMAL BARRIER.
  - 2) CLOSETS, LINEN CLOSETS, AND PANTRIES WITHIN THE DWELLING UNITS WHERE THE CEILING IS 8 FT. OR LESS ABOVE THE FLOOR FINISH AND THE SPRINKLER IS NOT REQUIRED TO PROTECT MATERIALS AS DEFINED BY NFPA.
  - 3) ANY PORCHES, BALCONIES, CORRIDORS, AND STAIRS THAT ARE OPEN AND ATTACHED.
  - 4) ATTICS, PENHOUSE EQUIPMENT ROOMS, CRAWL SPACES, FLOOR/CEILING SPACES, ELEVATOR SHAFTS, AND OTHER CONCEALED SPACES THAT ARE NOT USED OR INTENDED FOR LIVING PURPOSES OR STORAGE.
- MAINTENANCE OF THE SPRINKLER SYSTEM IS THE RESPONSIBILITY OF THE OWNER.  
 PROTECTION OF THE SPRINKLER SYSTEM AGAINST FREEZING IS THE RESPONSIBILITY OF THE OWNER.



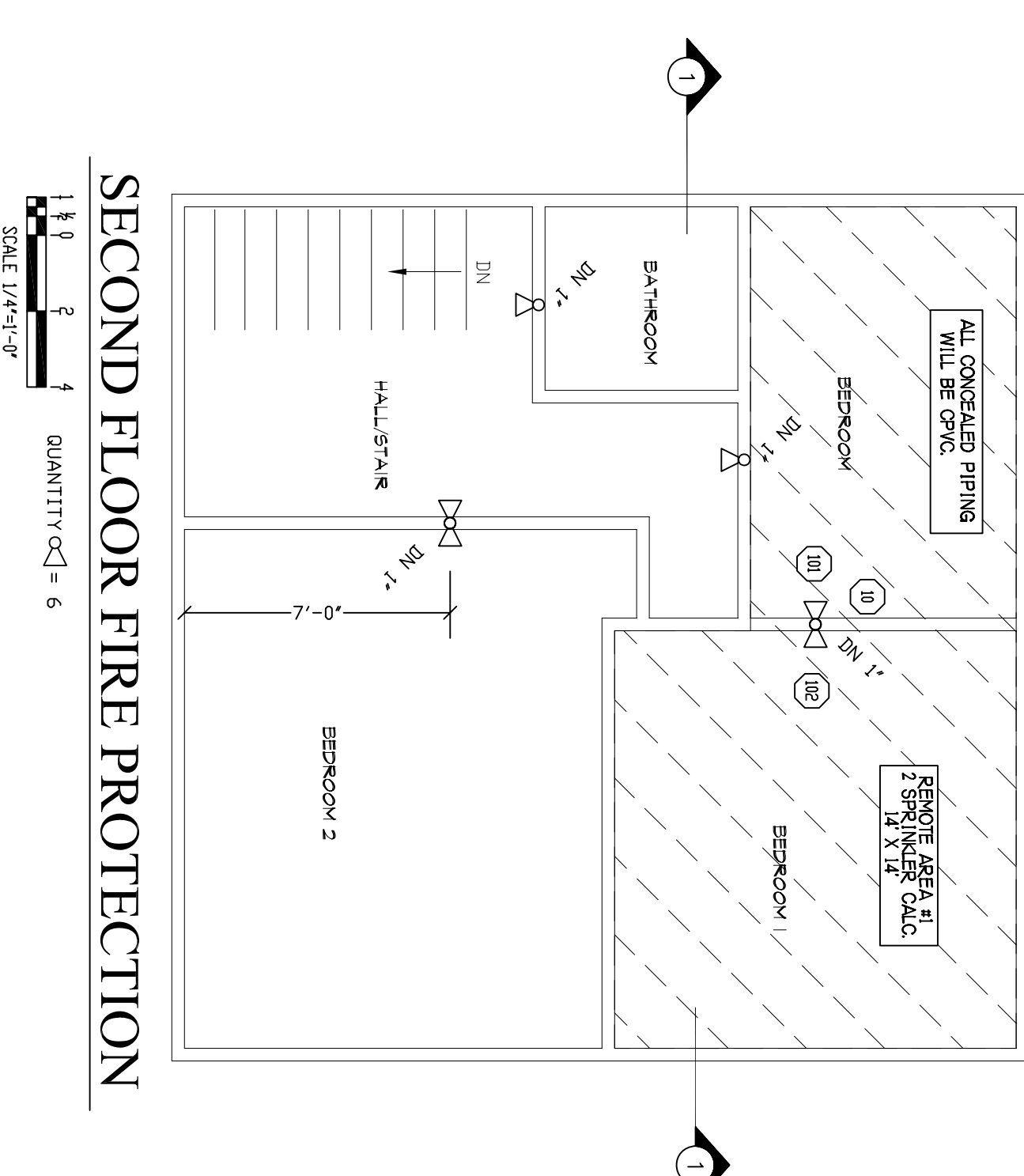
FIRE SPRINKLER RISER DETAIL  
SCALE N.T.S.



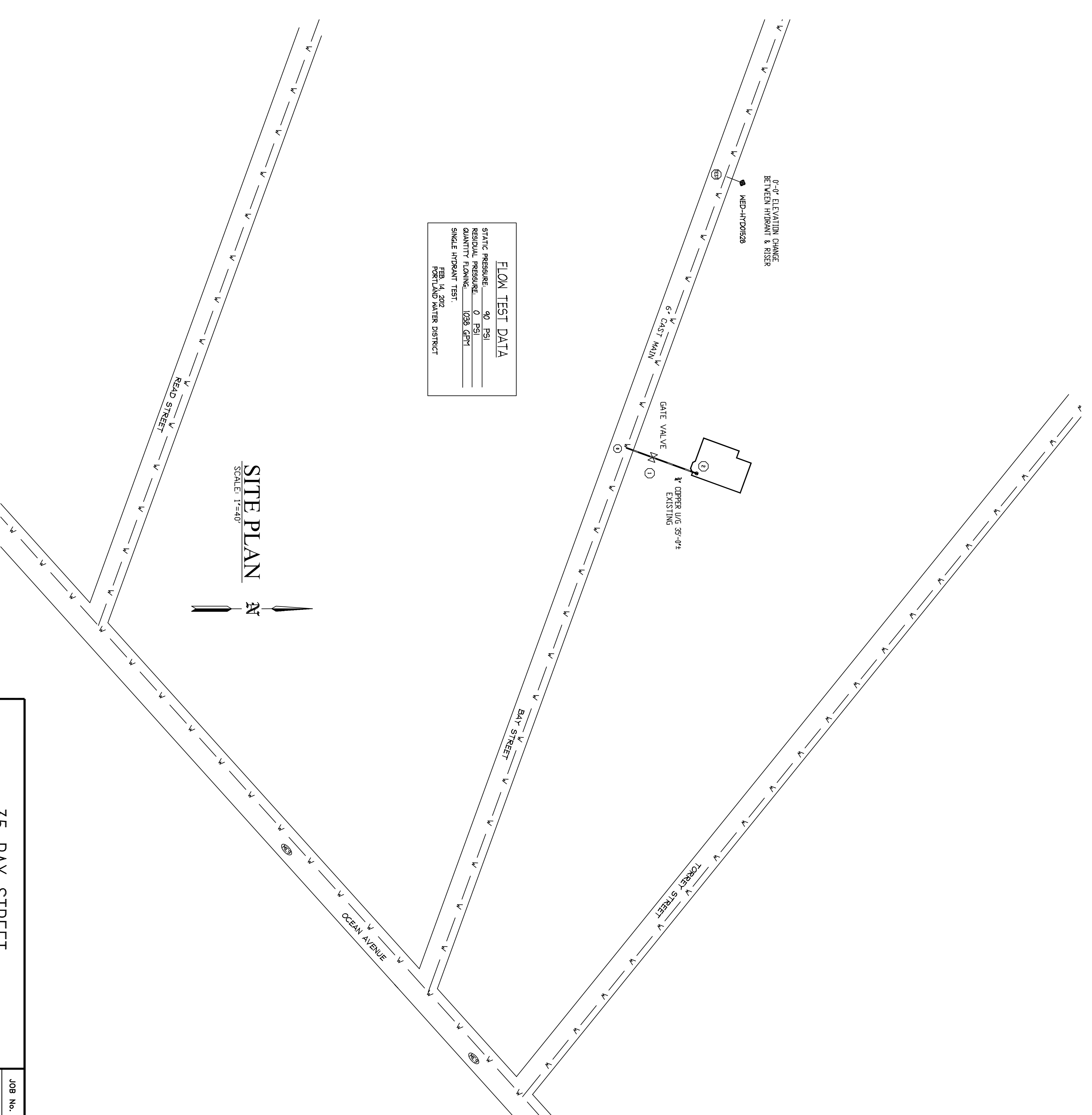
GROUND FLOOR FIRE PROTECTION  
SCALE 1/4"=1'-0" QUANTITY = 7



BASEMENT FIRE PROTECTION  
SCALE 1/4"=1'-0" QUANTITY = 6



SECOND FLOOR FIRE PROTECTION  
SCALE 1/4"=1'-0" QUANTITY = 6



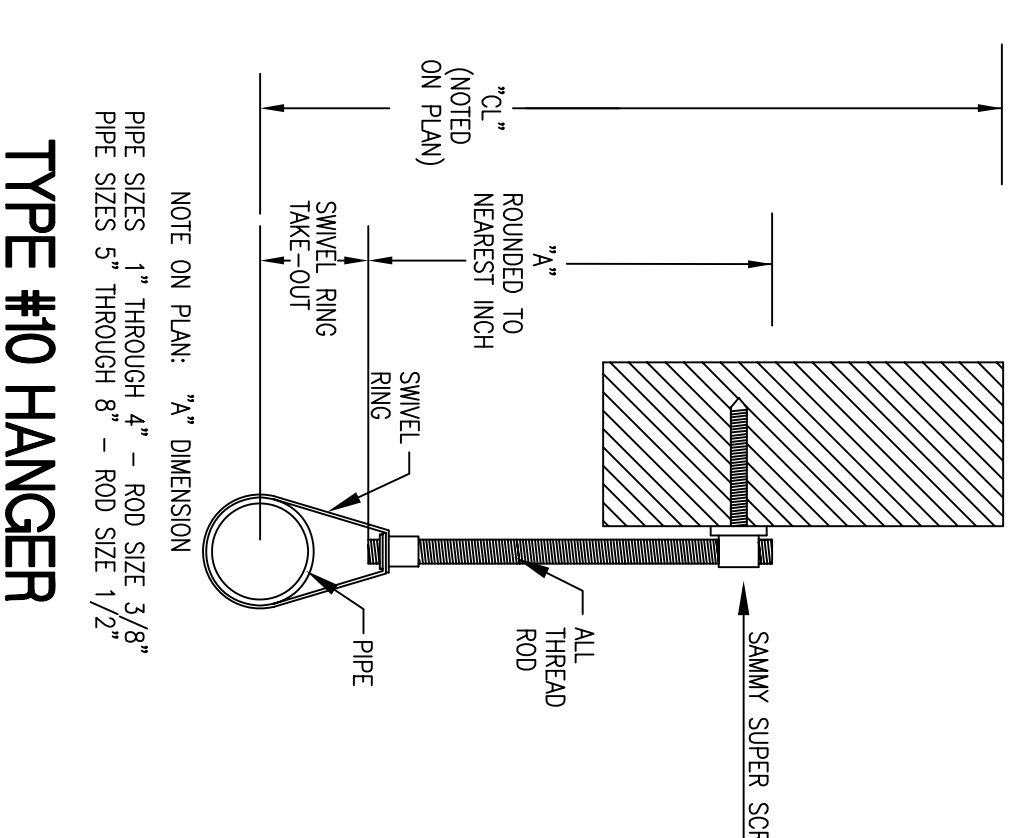
FLOW TEST DATA

STATIC PRESSURE	90 PSI
RESIDUAL PRESSURE	0 PSI
WATER FLOW RATE	100 GPM
WATER FLOW RATE	100 GPM

TESTED BY: J. J. JONES  
 PENINSULA WATER DISTRICT

HYDRAULIC DESIGN DATA

System # & Area	H1 - H1
No. of Sprinklers	2
Density	0.05 GPM
Designed Area	2 SPRINK
Water Allowance	N/A GPM
Water Flow Rate	28 GPM
Residual Pressure	85 PSI
at Base of Riser	
at Riser	526 PSI



TYPE #10 HANGER

REVISIONS

NO.	DESCRIPTION	DATE
1	ISSUED FOR PERMIT	11/12/13

NOTES

SPRINKLER TYPE	IDENTIFICATION NO.	QTY.	ESC.	MODEL	FINISH	ORIFICE	TEMP.	SYMBOL	QUANT.
QUICK RESP. PENDANT K-4.9	TK2324	7	NA	L71	BRASS	1/2"	155°	○	7
QUICK RESP. PENDANT K-4.9	TK2324	6	CONCEALED	L71	WHITE	1/2"	155°	●	6
QUICK RESP. PENDANT K-4.9	TK2324	6	2 PIECE	L71	WHITE	1/2"	155°	○	6

TOTAL SPRINKLERS THIS DRAWING 19

HEAD COUNT

SPRINKLER TYPE	IDENTIFICATION NO.	QTY.
QUICK RESP. PENDANT K-4.9	TK2324	7
QUICK RESP. PENDANT K-4.9	TK2324	6
QUICK RESP. PENDANT K-4.9	TK2324	6

STANDARD SYMBOLS

○	POST INDICATOR VALVE
●	KEY VALVE
○	FIRE INDICANT
○	FIRE DEPT. CONNECTION
○	O.S. & Y GATE VALVE
○	SWING CHECK VALVE
○	NEW UNDERGROUND
○	EXIST. UNDERGROUND
○	ALARM CHECK VALVE
○	RESER. W/ALARM VALVE
○	RESER. W/DRY VALVE
○	RESER. W/ELEC. FLOW SWITCH
○	RESER. W/RELUC. VALVE
○	WATER MOTOR BELL
○	ELECTRIC BELL
○	FRESH AIR DEPT. CONNECTION

INSPECTIONS

1.	
2.	
3.	
4.	
5.	

JOB No. M0098  
 DATE 11/12/13  
 DRAWN BY MAN  
 SCALE AS NOTED  
 SHEET No. FP-10ft1

35 BAY STREET  
 PORTLAND, MAINE 04103  
 FIRE PROTECTION PLAN  
 FREEDOM FIRE PROTECTION, INC.  
 209 QUAKER RIDGE ROAD  
 CASCO, MAINE 04015