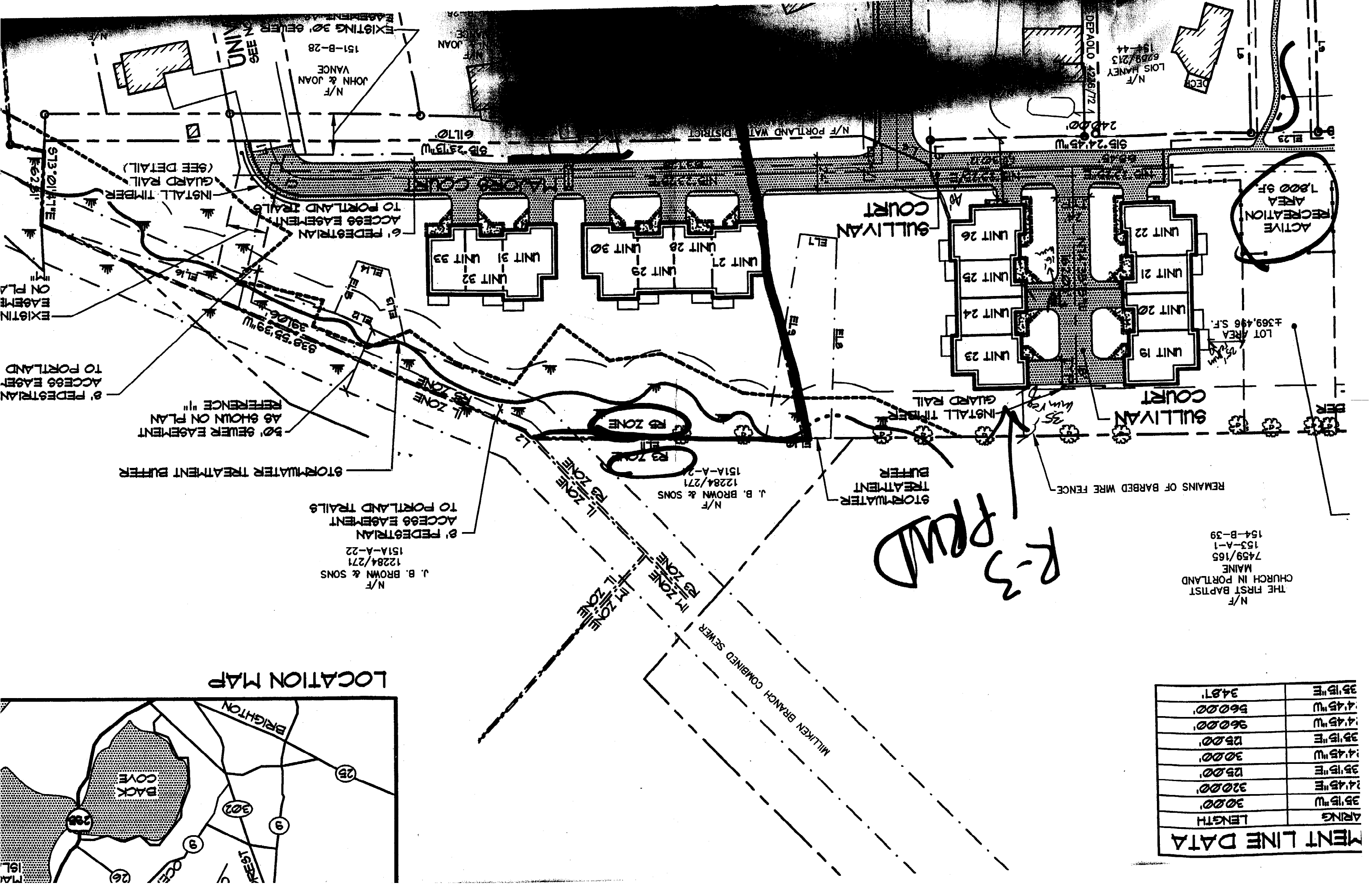


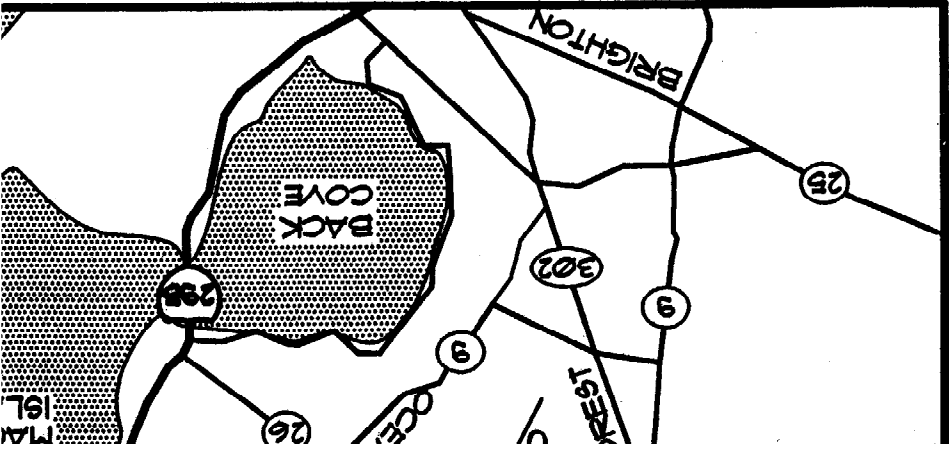
MENT LINE DATA	
ARNG	LENGTH
35'15" W	30.00'
24'45" E	320.00'
35'15" E	125.00'
24'45" W	30.00'
35'15" E	125.00'
24'45" W	30.00'
35'15" E	125.00'
24'45" W	360.00'
24'45" W	560.00'
35'15" E	34.81'

N/F  
THE FIRST BAPTIST  
CHURCH IN PORTLAND  
MAINE  
7459/165  
153-A-1  
154-B-39

*R-3 PWD*



LOCATION MAP



ACTIVE RECREATION AREA 1,800 SF

LOT AREA 436 S.F.

N/F  
LOIS HANEY  
699/213  
194-44

DEPAOLO 4296/72

915.24.45 W  
240.00'

SULLIVAN COURT

SULLIVAN COURT

STORMWATER TREATMENT BUFFER

N/F  
J. B. BROWN & SONS  
12284/271  
151A-A-2

8' PEDESTRIAN ACCESS EASEMENT TO PORTLAND TRAILS

N/F  
J. B. BROWN & SONS  
12284/271  
151A-A-22

STORMWATER TREATMENT BUFFER

50' SEWER EASEMENT AS SHOWN ON PLAN REFERENCE "11"

8' PEDESTRIAN ACCESS EASEMENT TO PORTLAND

INSTALL TIMBER GUARD RAIL (SEE DETAIL)  
6' PEDESTRIAN ACCESS EASEMENT TO PORTLAND TRAILS

UNIV SEE

N/F  
JOHN & JOAN VANCE  
151-B-28

573.0141 W  
662.51'

N/F PORTLAND WATER DISTRICT

915.24.45 W  
617.0'

EXISTING EASEMENT ON PLAN

EL. 6

338.55.39 W  
391.06'

EL. 5

EL. 4

EL. 1

EL. 2

EL. 3

EL. 23

BER

REMAINS OF BARBED WIRE FENCE

INSTALL TIMBER GUARD RAIL

35'

35'

35'

35'

35'

35'

35'

35'

35'

35'

35'

35'

35'

35'

35'

35'

35'

35'

35'

35'

35'

35'

