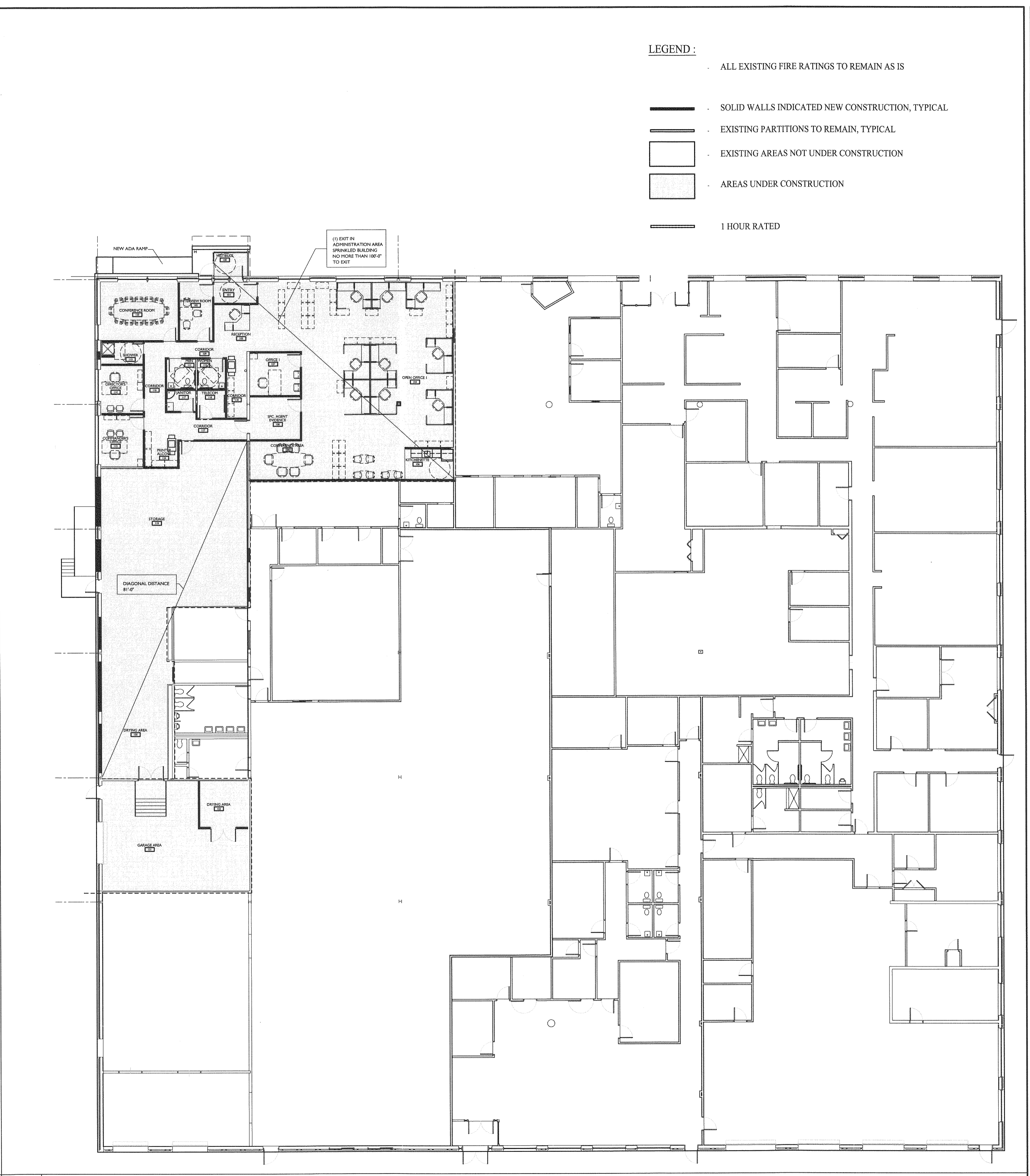


**AI PARTIAL FIRST FLOOR PLAN**

1/8"=1'-0"



PLAN NORTH

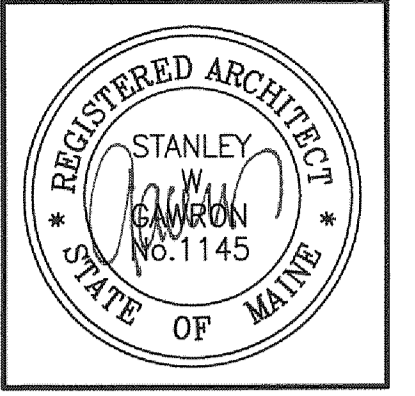


**A9 OVERALL BUILDING KEY PLAN**

NTS

**LEGEND :**

- ALL EXISTING FIRE RATINGS TO REMAIN AS IS
- SOLID WALLS INDICATED NEW CONSTRUCTION, TYPICAL
- - - EXISTING PARTITIONS TO REMAIN, TYPICAL
- EXISTING AREAS NOT UNDER CONSTRUCTION
- ▨ AREAS UNDER CONSTRUCTION
- 1 HOUR RATED



**Gawron Turgeon ARCHITECTS**  
 29 Black Point Road  
 Scarborough, Maine 04074  
 www.gawronturgeon.com  
 207-883-6307 tel / 207-883-0361 fax

**MAINE DEA**  
 312 CANCO ROAD  
 PORTLAND, MAINE

REVISIONS		
#	DATE	DESCRIPTION

DATE:	05-07-13
PROJECT #:	040113
DRAWN BY:	DLP
CHECKED BY:	SWG
DRAWING SCALE:	AS NOTED

**SHEET TITLE**  
 CODE REVIEW PLAN

**G102**

© COPYRIGHT 1985-2008  
 REPRODUCTION OR USE OF THIS DOCUMENT WITHOUT WRITTEN PERMISSION OF GAWRON TURGEON ARCHITECTS IS PROHIBITED