

**Gawron Turgeon ARCHITECTS**  
 29 Black Point Road  
 Scarborough, Maine 04074  
 www.gawronturgeon.com  
 207-883-6307 tel 207-883-0361 fax

**MAINE DEA**  
 312 CANCO ROAD  
 PORTLAND, MAINE

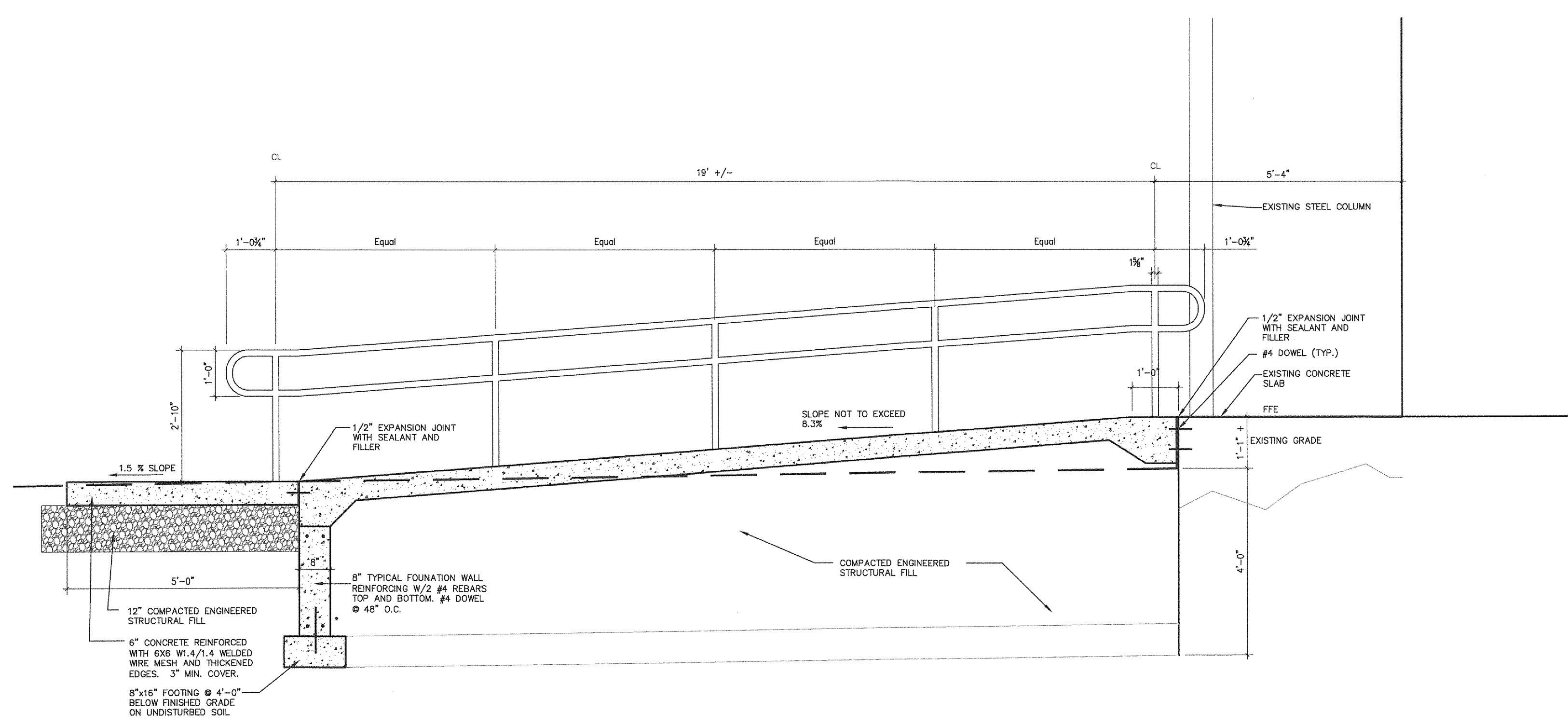
REVISIONS		
#	DATE	DESCRIPTION

DATE:	05-07-13
PROJECT #:	040113
DRAWN BY:	RS
CHECKED BY:	SWG
DRAWING SCALE:	AS NOTED

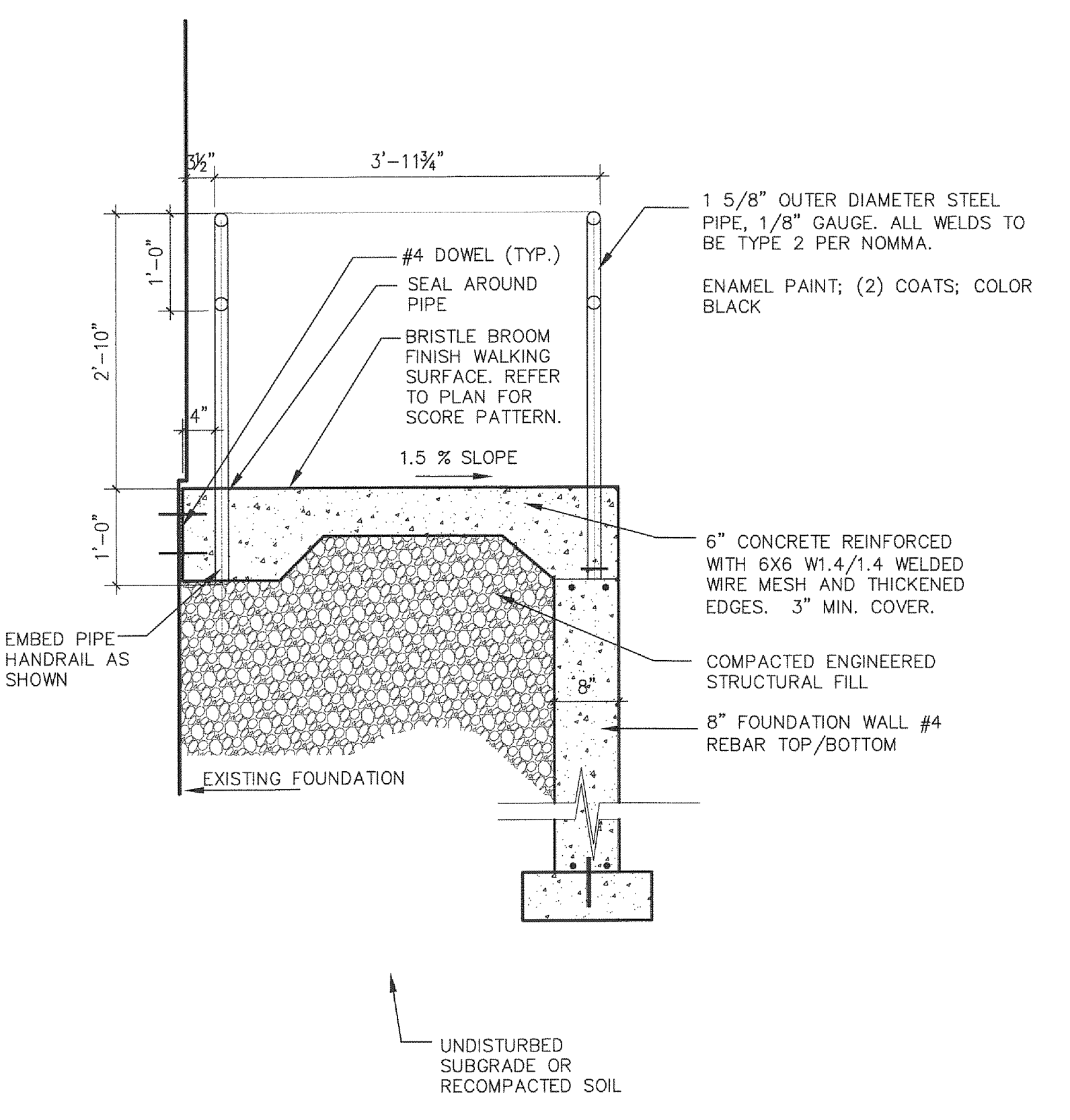
**SHEET TITLE**  
 ENTRANCE RAMP  
 DETAILS

**L100**

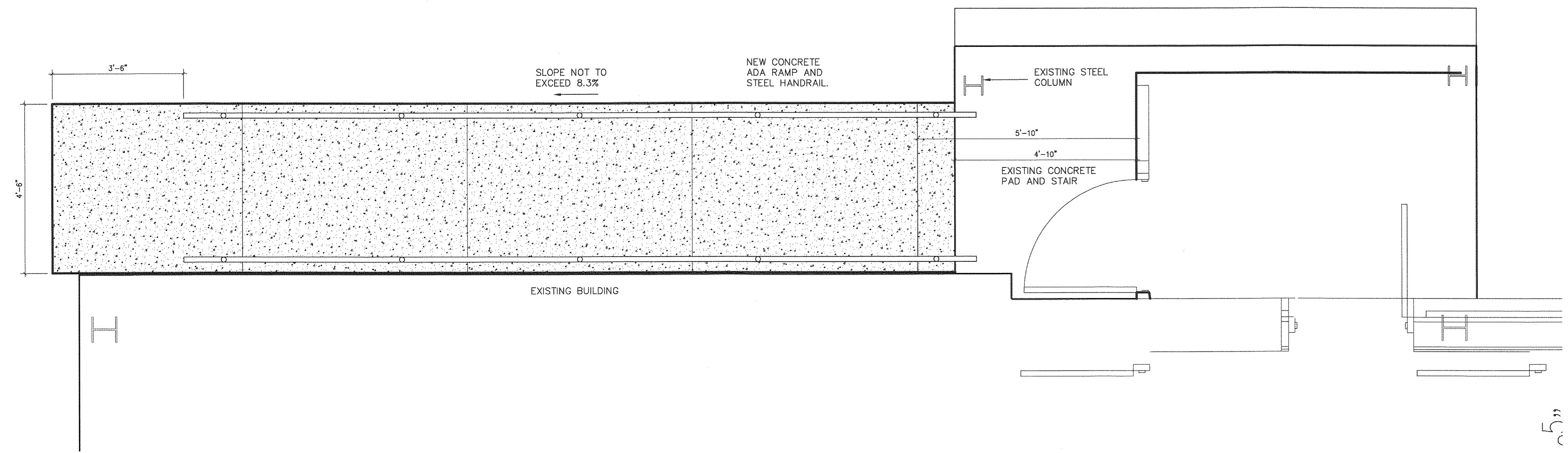
© COPYRIGHT 1985-2008  
 REPRODUCTION OR RELEASE OF THIS  
 DOCUMENT WITHOUT WRITTEN  
 PERMISSION OF GAWRON TURGEON  
 ARCHITECTS IS PROHIBITED



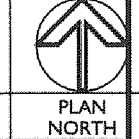
**J9 RAMP SECTION**  
 1/2"=1'-0"



**A1 RAMP SECTION**  
 3/4"=1'-0"



**A7 RAMP PLAN**  
 1/2"=1'-0"



I:\2013\050113 - Main\050113 - Entrance Ramp\050113 - Ramp.dwg, L100, 12/20/13 12:28:17 PM, RS